

Monolithic crystal filter

MQF45.0-1200/13



Application

- 6 pol filter
- i.f.- filter
- use in mobile and stationary transceivers

Limiting values

		Unit	Value
Nominal frequency	f_0	MHz	45.0
Insertion loss		dB	< 4.0
Pass band at 3.0dB		kHz	$\pm > 6$
Ripple in pass band	$f_0 \pm 4$ kHz	dB	< 2.0
Stop band attenuation	$f_0 \pm 20$ kHz	dB	> 60
Alternate attenuation	$f_0 \pm 910$ kHz	dB	> 90
Intermodulation at -20dBm	$f_0 \pm 25$; $f_0 \pm 50$ kHz	dB	> 80

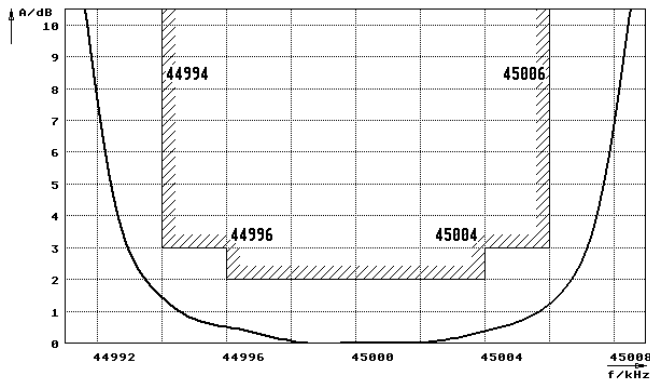
Terminating impedance Z

R1 C1	Ohm/pF	500 4.5
R2 C2	Ohm/pF	500 4.5

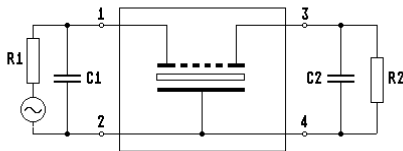
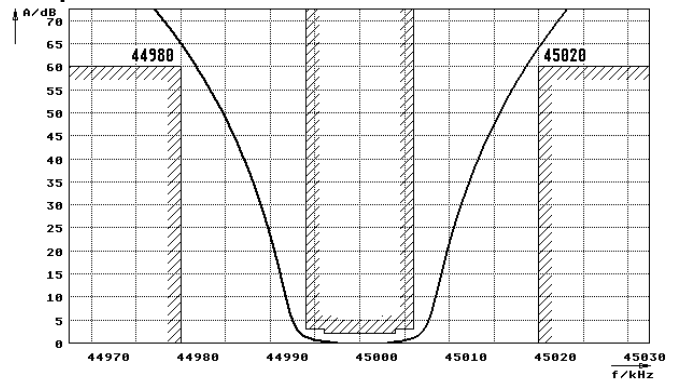
Operating temp. range	°C	-20... +70
Storage temp. range	°C	-45... +85
Environment conditions		according to CF001

Characteristics MQF45.0-1200/13

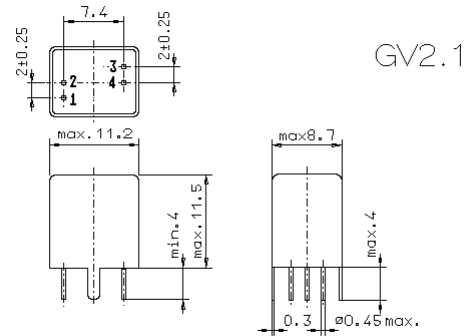
Pass band



Stop band



- Pin connections:
- | | |
|---|--------|
| 1 | Input |
| 2 | Ground |
| 3 | Output |
| 4 | Ground |



GV2.1

RoHS compliant