

Monolithic crystal filter

MQF21.4-3000/01



Application

- 2 pol filter
- i.f.- filter
- use in mobile and stationary transceivers

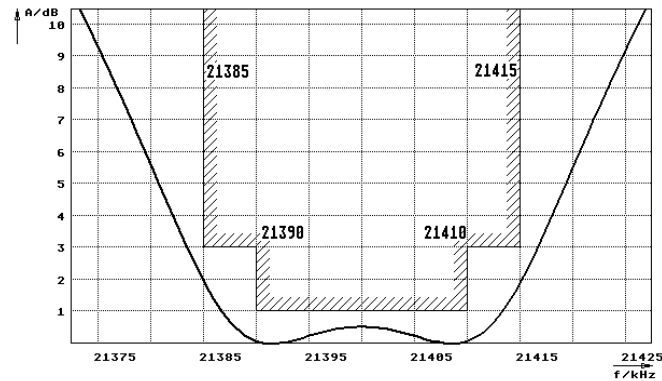
Limiting values		Unit	Value
Nominal frequency	f_0	MHz	21.4
Insertion loss		dB	< 1.5
Pass band at 3.0dB		kHz	$\pm > 15$
Ripple in pass band	$f_0 \pm 10$ kHz	dB	< 1.0
Stop band attenuation	$f_0 \pm 45$ kHz	dB	> 15
	$f_0 \pm 75$ kHz	dB	> 20
Alternate attenuation	$f_0 + 350 \dots 1000$ kHz	dB	> 35
	$f_0 - 300 \dots 1000$ kHz	dB	> 35
Spurious responses		dB	> 8

Terminating impedance Z			
R1 C1		Ohm/pF	1500 1
R2 C2		Ohm/pF	1500 1

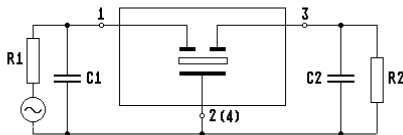
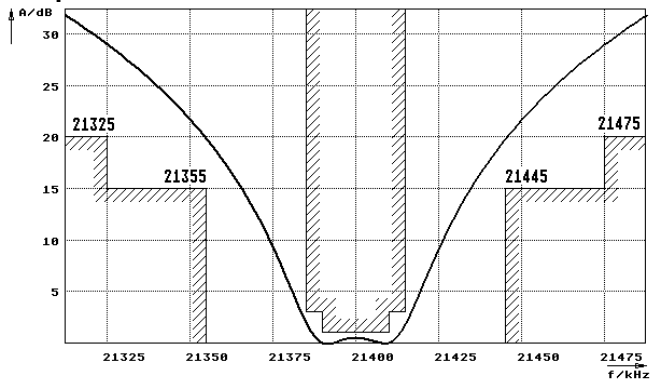
Operating temp. range		°C	-30... +70
-----------------------	--	----	------------

Characteristics MQF21.4-3000/01

Pass band



Stop band



- Pin connections:
- 1 Input
 - 2 Ground-Input
 - 3 Output
 - 4 Ground-Output

