

Monolithic crystal filter

MQF21.4-1800/10



Application

- 2 pol filter
- i.f.- filter
- use in mobile and stationary transceivers

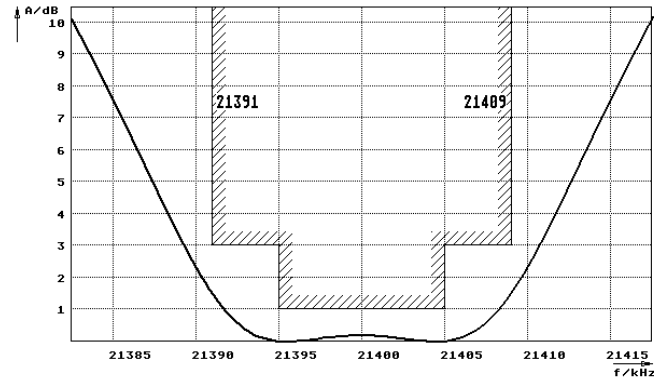
Limiting values		Unit	Value
Center frequency	f_0	MHz	21.4
Insertion loss		dB	≤ 2.0
Pass band at 3.0 dB		kHz	± 9.00
Ripple in pass band	$f_0 \pm 5.00$ kHz	dB	≤ 1.0
Stop band attenuation	$f_0 \pm 26$ kHz	dB	≥ 15 except spurious
Alternate attenuation	$f_0 \pm 450$ kHz	dB	> 30

Terminating impedance Z		Unit	Value
R1 C1		Ohm/pF	2500 2
R2 C2		Ohm/pF	2500 2

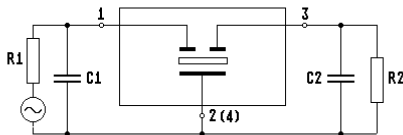
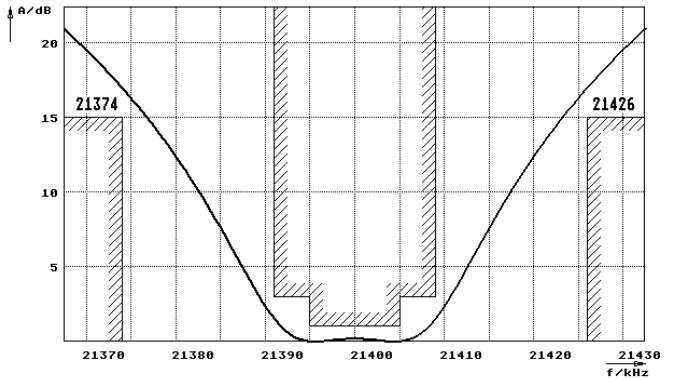
Operating temp. range	$^{\circ}\text{C}$	-20... +70
Storage temp. range	$^{\circ}\text{C}$	-55...+85

Characteristics MQF21.4-1800/10

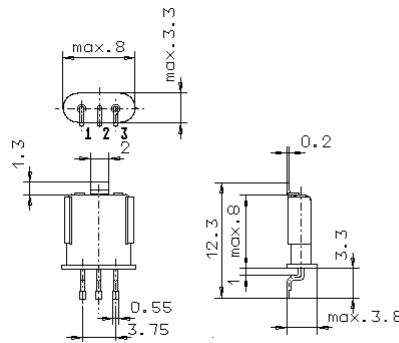
Pass band



Stop band



- Pin connections:
- 1 Input
 - 2 Ground-Input
 - 3 Output
 - 4 Ground-Output



GH9/S