

# Monolithic crystal filter

## MQF21.4-0750/16



### Application

- 4 pol filter
- i.f.- filter
- use in mobile and stationary transceivers

### Limiting values

		Unit	Value
Nominal frequency	$f_0$	MHz	21.4
Insertion loss		dB	$\leq 2.5$
Pass band at 3.0 dB		kHz	$\pm 3.75$
Ripple in pass band	$f_0 \pm 3.00$ kHz	dB	$\leq 1.0$
Stop band attenuation	$f_0 \pm 14$ kHz	dB	$\geq 40$ except spurious

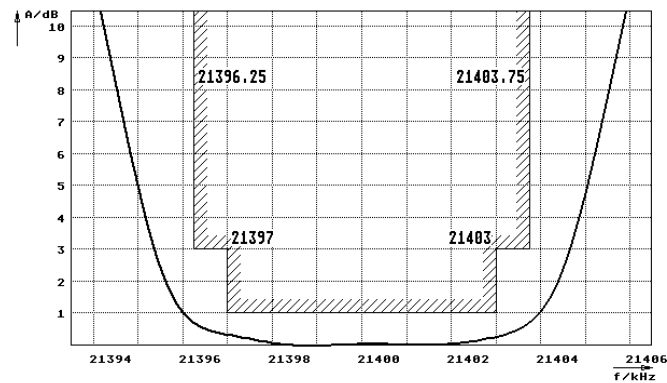
### Terminating impedance Z

R1    C1		Ohm/pF	850    5
R2    C2		Ohm/pF	850    5
Coupling capacitance	Ck	pF	16.0

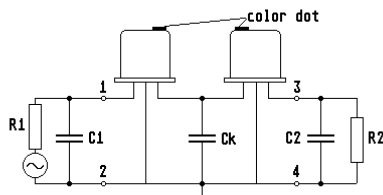
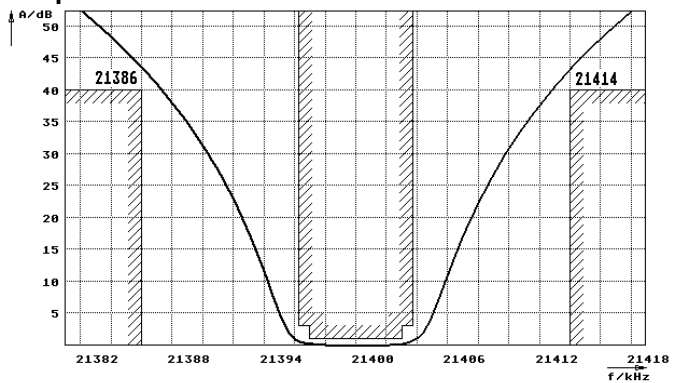
Operating temp. range		$^{\circ}\text{C}$	-25... +70
-----------------------	--	--------------------	------------

### Characteristics MQF21.4-0750/16

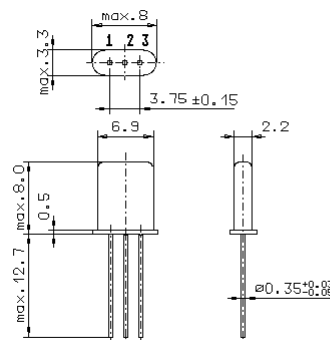
#### Pass band



#### Stop band



- Pin connections:
- 1 Input
  - 2 Ground-Input
  - 3 Output
  - 4 Ground-Output



GH9