

PLEASE CHECK WWW.MOLEX.COM FOR LATEST PART INFORMATION

Part Number: [0334670003](#)
Status: **Active**
Overview: mx64 sealed single row connectors
Description: 2.54mm (.100") Pitch MX64™ Terminal, Gold (Au) Plating, 22 AWG, Right Reel Payoff, Also used with MX123™ Female Receptacle Housing

Documents:

[Drawing \(PDF\)](#) [RoHS Certificate of Compliance \(PDF\)](#)

General

| | |
|-------------------------|---|
| Product Family | Crimp Terminals |
| Series | 33467 |
| Comments | Right Reel Payoff |
| Crimp Quality Equipment | Yes |
| Overview | mx64 sealed single row connectors |
| Product Name | MX123, MX64™ |

Physical

| | |
|------------------------------|--------------------------|
| Gender | Female |
| Material - Metal | Copper |
| Material - Plating Mating | Gold |
| Packaging Type | Reel |
| Plating min: Mating (µin) | 30 |
| Plating min: Mating (µm) | 0.76 |
| Termination Interface: Style | Crimp or Compression |
| Wire Insulation Diameter | 1.50-2.06mm (.059-.081") |
| Wire Size AWG | 22 |
| Wire Size mm² | N/A |

Material Info

Reference - Drawing Numbers

| | |
|-------------------------|----------------------------|
| Packaging Specification | PK-30907-759, PK-31300-516 |
| Sales Drawing | SD-33468-001 |

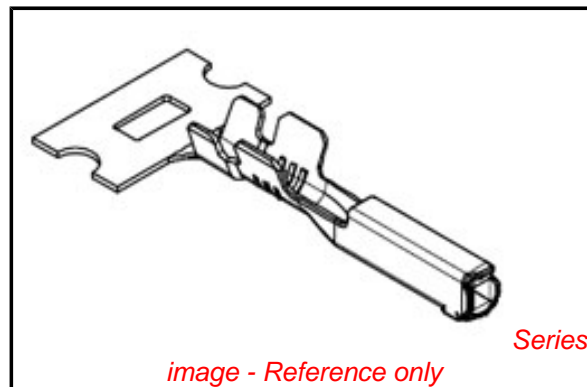


image - Reference only

EU RoHS

ELV and RoHS Compliant
REACH SVHC
Contains SVHC: No
Halogen-Free Status

China RoHS



Need more information on product environmental compliance?

Email productcompliance@molex.com
 For a multiple part number RoHS Certificate of Compliance, [click here](#)

Please visit the [Contact Us](#) section for any non-product compliance questions.

Search Parts in this Series

[33467Series](#)

Use With

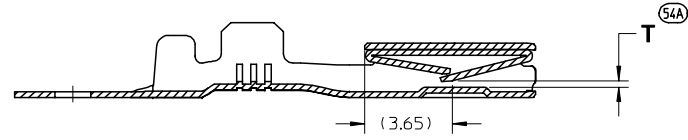
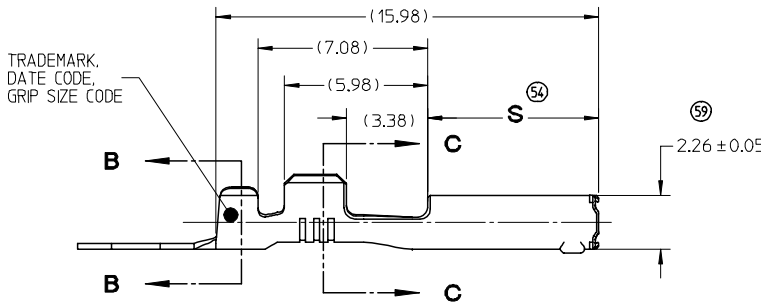
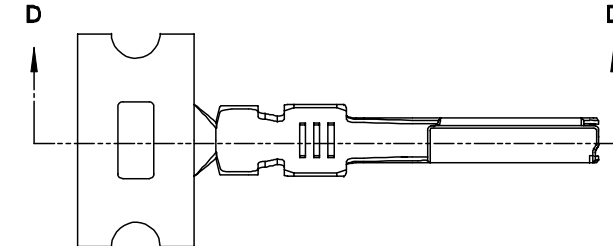
MX64™ Sealed Single Row Crimp Housing 31403 , MX123™ Female Receptacle Housing 34566 , 34576

Application Tooling | FAQ

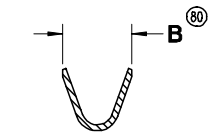
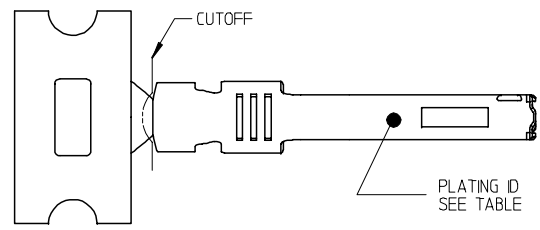
Tooling specifications and manuals are found by selecting the products below. Crimp Height Specifications are then contained in the Application Tooling Specification document.

Global

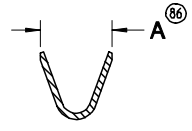
| Description | Product # |
|------------------------|----------------------------|
| Hand Crimp Tool | 0638114200 |
| Manual Extraction Tool | 0638131400 |



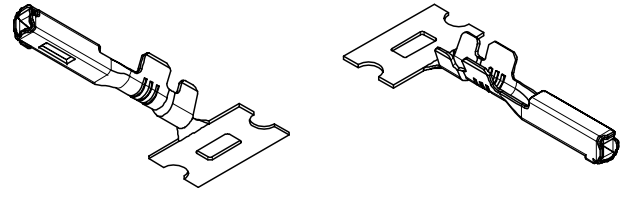
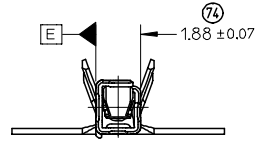
SECTION D-D



SECTION B-B



SECTION C-C



ISO VIEWS
SCALE 3:1

NOTES: (UNLESS OTHERWISE SPECIFIED)

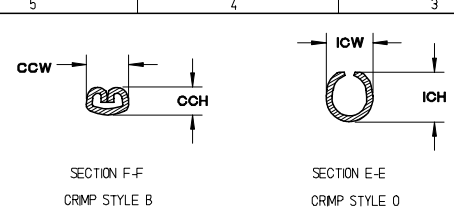
1. MATERIALS: SEE TABLE
2. PACKAGING SPECIFICATION: PK-31300-516 AND PK-30907-759
3. CRIMPED LEAD MEETS THE FOLLOWING:
 - 3.1. SAE/USCAR-21, MAY 2002
 - 3.2. SAE/USCAR-2, REV. 3, APRIL 2001
 - 3.3. SAE/USCAR-12, REV. 2
 - 3.4. GMW #3191 AUGUST 22, 2000 (DRAFT) TEMPERATURE CLASS 3, APPLES ONLY TO Au PARTS

| GRIP SIZE GAGE | GRIP SIZE CODE | PART NUMBER | PART REV | REEL PAYOFF DIRECTION | DIM A | DIM B | DIM S | DIM T | BASE MATERIAL | PLATING ID | LUBRICATION |
|----------------|----------------|-------------|----------|-----------------------|-------|-------|-------------|-------------|---------------|--------------|-------------|
| 22 | A | 33468-0002 | G | D | 2,3 | 2,3 | 7,15 ± 0,10 | 0,26 ± 0,07 | COPPER ALLOY | Sn Lead Free | NO |
| | | 33468-0001 | G | B | | | | | COPPER ALLOY | Au Lead Free | NO |
| | | 33467-0003 | G | B | 2,3 | 2,3 | 6,97-7,27 | 0,26 ± 0,07 | COPPER ALLOY | Au Lead Free | NO |
| 18/20 | B | 33468-0004 | G | D | 3,0 | 2,9 | 7,15 ± 0,10 | 0,26 ± 0,07 | COPPER ALLOY | Sn Lead Free | NO |
| | | 33468-0003 | G | B | | | | | COPPER ALLOY | Au Lead Free | NO |
| | | 33467-0006 | G | D | 3,0 | 2,9 | 6,97-7,27 | 0,26 ± 0,07 | COPPER ALLOY | Au Lead Free | NO |
| | | 33467-0005 | G | B | | | | | COPPER ALLOY | Au Lead Free | NO |

| ENTER DESCRIPTION EC NO: UAU2007-0559 (DR)W.DHEMNI 2007/04/12 (CHK)D.D.HEMNI 2007/04/13 (APP)R.BOSER 2007/04/13 | DESCRIPTION G | QUALITY SYMBOLS $\nabla=0$ $\nabla=0$ | GENERAL TOLERANCES (UNLESS SPECIFIED) | DIMENSION STYLE MM ONLY | SCALE 5:1 | DESIGN UNITS METRIC | THIRD ANGLE PROJECTION | | | | | | | | | | | | | | | | | | | | | | | | | | | | | | | | | |
|---|------------------|--|---------------------------------------|----------------------------|--------------|------------------------|------------------------|-------|----------|-------|-------|----------|--------|-------|---------|-------|-------|--|----------|--|------|------------|--|----------|------------|--|------|------------|--|----------|-------------|--|------|----------|--|----------|-----------------------------------|---------------------------|------------------------------|---------------------|
| | | <table border="1"> <tr> <th></th> <th>mm</th> <th>INCH</th> </tr> <tr> <td>4 PLACES</td> <td>± ---</td> <td>± ---</td> </tr> <tr> <td>3 PLACES</td> <td>± ---</td> <td>± ---</td> </tr> <tr> <td>2 PLACES</td> <td>± 0.10</td> <td>± ---</td> </tr> <tr> <td>1 PLACE</td> <td>± 0.3</td> <td>± ---</td> </tr> </table> | | mm | INCH | 4 PLACES | ± --- | ± --- | 3 PLACES | ± --- | ± --- | 2 PLACES | ± 0.10 | ± --- | 1 PLACE | ± 0.3 | ± --- | <table border="1"> <tr> <th colspan="2">DRAWN BY</th> <th>DATE</th> </tr> <tr> <td colspan="2">L. PULLIAM</td> <td>2/3/2006</td> </tr> <tr> <th colspan="2">CHECKED BY</th> <th>DATE</th> </tr> <tr> <td colspan="2">D. HEMNANI</td> <td>2/3/2006</td> </tr> <tr> <th colspan="2">APPROVED BY</th> <th>DATE</th> </tr> <tr> <td colspan="2">B. MOSER</td> <td>2/3/2006</td> </tr> </table> | DRAWN BY | | DATE | L. PULLIAM | | 2/3/2006 | CHECKED BY | | DATE | D. HEMNANI | | 2/3/2006 | APPROVED BY | | DATE | B. MOSER | | 2/3/2006 | TITLE MX64 RECEPTACLE TERMINAL | MATERIAL NO. SEE TABLE | DOCUMENT NO. SD-33468-001 | SHEET NO. 1 OF 3 |
| | | | mm | INCH | | | | | | | | | | | | | | | | | | | | | | | | | | | | | | | | | | | | |
| | | 4 PLACES | ± --- | ± --- | | | | | | | | | | | | | | | | | | | | | | | | | | | | | | | | | | | | |
| 3 PLACES | ± --- | ± --- | | | | | | | | | | | | | | | | | | | | | | | | | | | | | | | | | | | | | | |
| 2 PLACES | ± 0.10 | ± --- | | | | | | | | | | | | | | | | | | | | | | | | | | | | | | | | | | | | | | |
| 1 PLACE | ± 0.3 | ± --- | | | | | | | | | | | | | | | | | | | | | | | | | | | | | | | | | | | | | | |
| DRAWN BY | | DATE | | | | | | | | | | | | | | | | | | | | | | | | | | | | | | | | | | | | | | |
| L. PULLIAM | | 2/3/2006 | | | | | | | | | | | | | | | | | | | | | | | | | | | | | | | | | | | | | | |
| CHECKED BY | | DATE | | | | | | | | | | | | | | | | | | | | | | | | | | | | | | | | | | | | | | |
| D. HEMNANI | | 2/3/2006 | | | | | | | | | | | | | | | | | | | | | | | | | | | | | | | | | | | | | | |
| APPROVED BY | | DATE | | | | | | | | | | | | | | | | | | | | | | | | | | | | | | | | | | | | | | |
| B. MOSER | | 2/3/2006 | | | | | | | | | | | | | | | | | | | | | | | | | | | | | | | | | | | | | | |
| ANGULAR ± 3 ° | | | MATERIAL NO. SEE TABLE | | | | | | | | | | | | | | | | | | | | | | | | | | | | | | | | | | | | | |
| THIS DRAWING CONTAINS INFORMATION THAT IS PROPRIETARY TO MOLEX INCORPORATED AND SHOULD NOT BE USED WITHOUT WRITTEN PERMISSION | | | | | | | | | | | | | | | | | | | | | | | | | | | | | | | | | | | | | | | | |

| WIRE APPLICATION SEE NOTE 2 | | APPLICATOR TOOLING INFORMATION TABLE | | | | | | | | | | | | | | | | |
|--|---------------------------|--------------------------------------|-------|-----|-------|-------|-----|-------|------|-------|------|------|------|------|------|------|------|------|
| SAE AWG | METRIC mm ² | A | B | C | D | E | F | G | H | J | K | L | M | N | P | R | S | T |
| FOR TOLERANCE SEE APPLICATOR TOOLING TOLERANCE TABLE | | | | | | | | | | | | | | | | | | |
| 18 | (0.8) | 0.470 | 1.803 | 7.1 | 12.13 | 0.944 | 6.5 | 1.783 | 1.83 | 1.885 | 0.98 | 0.98 | 0.22 | 2.10 | 1.90 | 0.34 | 2.10 | 0.98 |
| 20 | (0.5) | 0.470 | 1.803 | 7.1 | 12.13 | 0.944 | 6.5 | 1.783 | 1.83 | 1.885 | 0.98 | 0.98 | 0.22 | 2.10 | 1.90 | 0.34 | 2.10 | 0.98 |
| 22 | (0.35) | 0.353 | 1.457 | 7.4 | 12.14 | 0.880 | 6.3 | 1.435 | 2.29 | 1.700 | 1.02 | 0.89 | 0.17 | 1.97 | 1.71 | 0.31 | 1.27 | 0.68 |

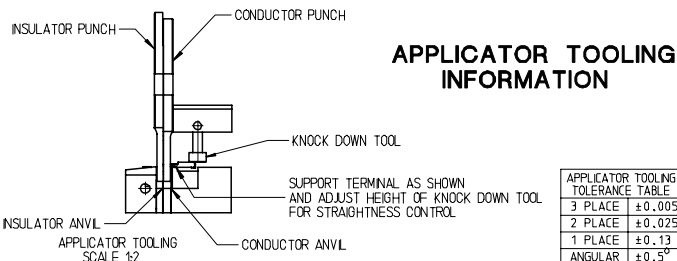
| TERMINAL CRIMP INFORMATION TABLE | | | | |
|--|---|--|--|---|
| PART NUMBER | CONDUCTOR CRIMP HEIGHT CCH TOL. ±0.05mm | CONDUCTOR CRIMP WIDTH CCW TOL. ±0.05mm | INSULATOR CRIMP HEIGHT ICH TOL. ±0.1mm | INSULATOR CRIMP WIDTH ICW TOL. ±0.1mm |
| 33467-0005 33467-0006 33468-0003 33468-0004 | 1.15 | 1.80 | 2.10 | 1.95 |
| 33467-0005 33467-0006 33468-0003 33468-0004 | 1.10 | 1.80 | 1.95 | 1.95 |
| 33467-0003 33467-0004 33468-0001 33468-0002 | 0.95 | 1.45 | 1.60 | 1.80 |



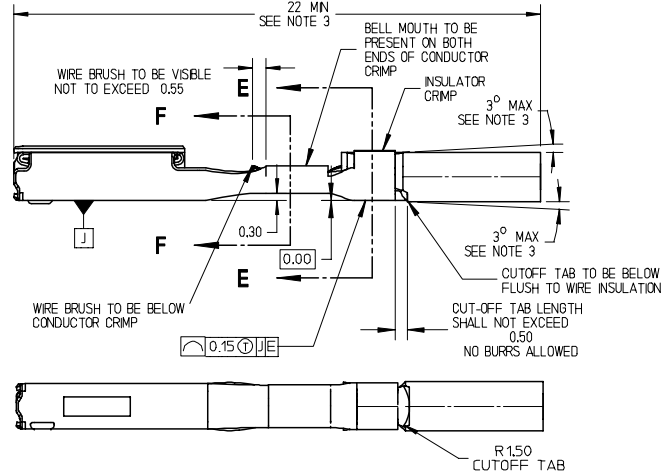
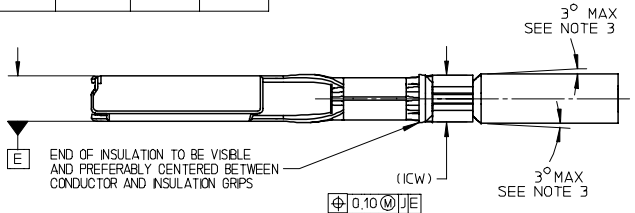
| SUPPLIER APPLICATOR TOOLING TABLE SEE NOTE 4.2 | |
|--|---|
| PART NUMBER | DESCRIPTION |
| 63867-3000 | MX64 CRIMP APPLICATOR WITH APPLICATOR TOOL KIT 18/20 AWG (PAYOFF DIRECTION D (LEFT PAYOFF) (CONTACT MOLEX FOR PAYOFF DETAIL)) |
| 63867-3070 | MX64 APPLICATOR TOOL KIT 18/20 AWG |
| 63867-3100 | MX64 CRIMP APPLICATOR WITH APPLICATOR TOOL KIT 22 AWG (PAYOFF DIRECTION D (LEFT PAYOFF) (CONTACT MOLEX FOR PAYOFF DETAIL)) |
| 63867-3170 | MX64 APPLICATOR TOOL KIT 22 AWG |

- NOTES: (UNLESS OTHERWISE SPECIFIED, APPLIES TO CRIMPED LEAD ONLY)
- TERMINAL:
 - MATING (BLADE/PIN) SHALL CONFORM TO EWCAP-001 REV. B
 - RECEPTACLE CRIMPED LEAD MUST BE USED WITH MATCHING PLATING TYPE ON MALE TERMINAL
 - WIRE SHALL MEET THE FOLLOWING SPECIFICATIONS:
 - SAE: ESB-MIL123-A
WSS-MIL123-A1
SAE J1128 WITH OUTSIDE DIAMETER OF 1.47mm MINIMUM - 2.06mm MAXIMUM
 - METRIC: WSK-MIL126-A1
 - WIRE CONDITION AFTER CRIMP:
 - CRIMPED TERMINAL LEAD MUST BE ABLE TO PASS FREELY THROUGH THE CHECKING AD SHOWN ON SHEET 3
 - WIRE SURFACE MUST BE FREE OF SCRATCHES, GROVES OR DENTS
 - TOOLING:
 - FOR HAND CRIMPED TOOLING REFER 63811-4200
 - FOR APPLICATOR TOOLING REFER TO APPLICATOR TOOLING INFORMATION OR SUPPLIER APPLICATOR TOOLING TABLE

APPLICATOR TOOLING INFORMATION

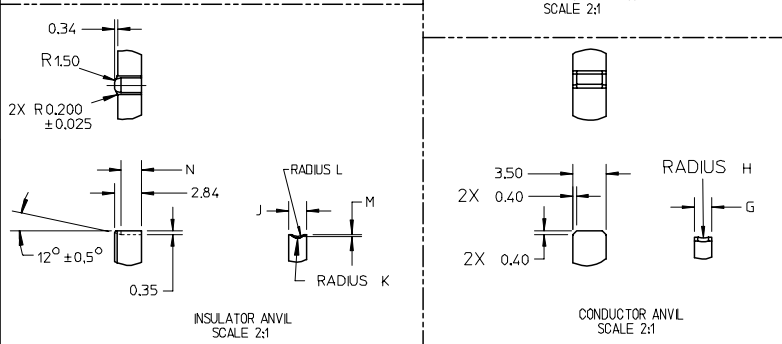
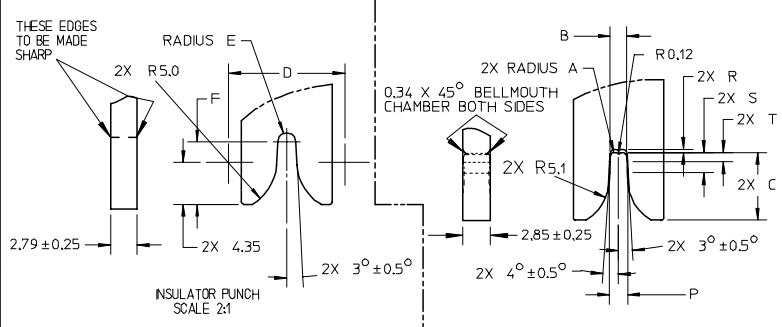


| APPLICATOR TOOLING TOLERANCE TABLE | |
|------------------------------------|--------|
| 3 PLACE | ±0.005 |
| 2 PLACE | ±0.025 |
| 1 PLACE | ±0.13 |
| ANGULAR | ±0.5° |



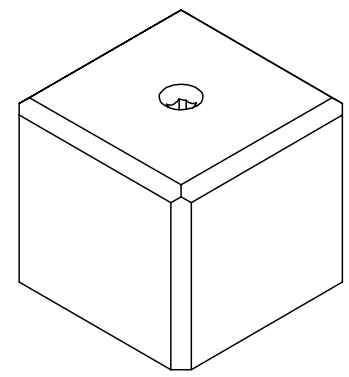
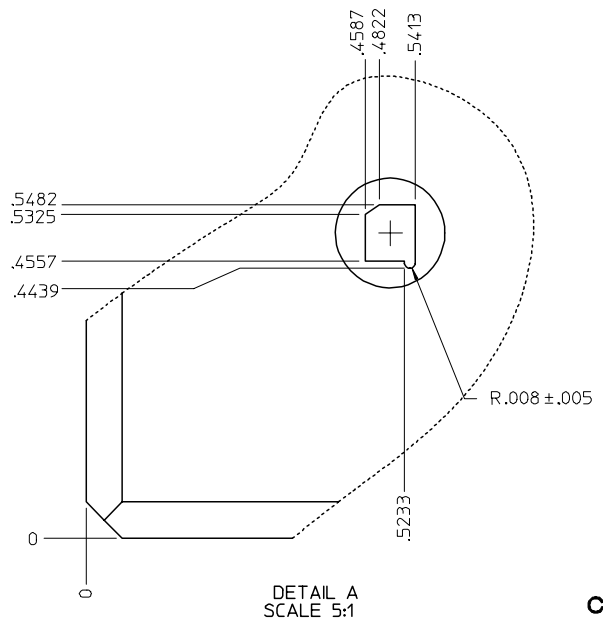
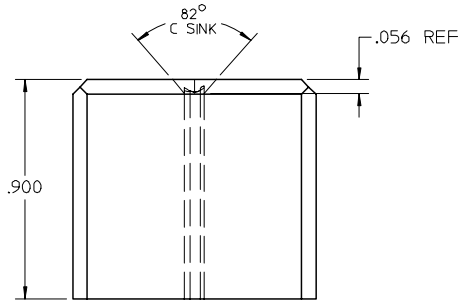
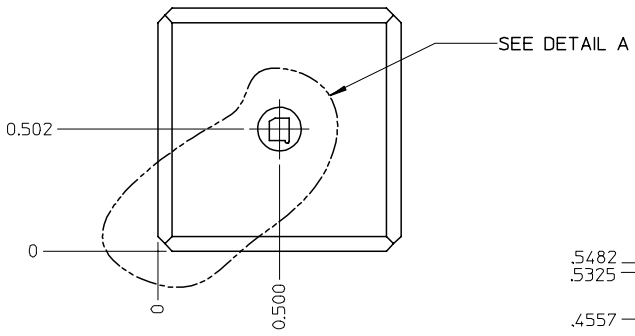
(4.2) WIRE STRIP LENGTH

THIS SHEET APPLIES TO RECEPTACLE CRIMPED LEAD ONLY



| ENTER DESCRIPTION EC NO: UAU2007-0559 IDRWINDHEWANI 2007/04/12 CHKDDJ.HEMNANI 2007/04/13 APPR:BMOSER 2007/04/13 | QUALITY SYMBOLS =0 =0 | GENERAL TOLERANCES (UNLESS SPECIFIED) | | DIMENSION STYLE MM ONLY | | SCALE 5:1 | DESIGN UNITS METRIC | THIRD ANGLE PROJECTION | |
|---|-----------------------------|---------------------------------------|--------|----------------------------|---|-----------------------------------|------------------------------|------------------------|--|
| | | mm | INCH | DRAWN BY L. PULLIAM | DATE 2/3/2006 | TITLE MX64 RECEPTACLE TERMINAL | MOLEX INCORPORATED | | |
| G | DESCRIPTION | 4 PLACES | ± --- | ± --- | CHECKED BY D. HEMNANI | DATE 2/3/2006 | SD-33468-001 | | |
| | | 3 PLACES | ± --- | ± --- | APPROVED BY B. MOSER | DATE 2/3/2006 | | | |
| | | 2 PLACES | ± 0.10 | ± --- | MATERIAL NO. SEE TABLE | | DOCUMENT NO. SD-33468-001 | SHEET NO. 2 OF 3 | |
| | | 1 PLACE | ± 0.3 | ± --- | THIS DRAWING CONTAINS INFORMATION THAT IS PROPRIETARY TO MOLEX INCORPORATED AND SHOULD NOT BE USED WITHOUT WRITTEN PERMISSION | | | | |
| | | ANGULAR ± 3° | | | | | | | |

| SUPPLIER CHECKING AID TOOLING | |
|-------------------------------|---|
| PART NUMBER | DESCRIPTION |
| 63867-3008 | MX64 CRIMPED LEAD STRAIGHTNESS CHECKING AID FOR 18 AWG, 20 AWG AND 22 AWG |



- NOTES: (UNLESS OTHERWISE SPECIFIED)
1. MATERIAL: STEEL 4140 PREHARDENED
 2. FINISH:
 - 2.1 SURFACE: BLACK OXIDE
 - 2.2 INSIDE PROFILE: POLISH
 3. ALL DIMENSIONS ON THIS SHEET ARE IN INCHES
 4. TOLERANCES ON THIS SHEET ARE IN INCHES
 - 2 PLACES ± .01
 - 3 PLACES ± .005
 - 4 PLACES ± .0002

CRIMPED LEAD STRAIGHTNESS CHECKING AID FOR 18 AWG, 20 AWG AND 22 AWG

THIS SHEET APPLIES TO RECEPTACLE CRIMPED LEAD ONLY

| ENTER DESCRIPTION EC NO: UAU2007-0559 G DRW:HEMNI 2007/04/12 CHK:DD.HEMNI 2007/04/13 APPR:BMOSER 2007/04/13 | QUALITY SYMBOLS ▽=0 ▽=0 | GENERAL TOLERANCES (UNLESS SPECIFIED) <table border="1"> <thead> <tr> <th></th> <th>MM</th> <th>INCH</th> </tr> </thead> <tbody> <tr> <td>4 PLACES</td> <td>± ---</td> <td>± ---</td> </tr> <tr> <td>3 PLACES</td> <td>± ---</td> <td>± ---</td> </tr> <tr> <td>2 PLACES</td> <td>± 0.10</td> <td>± ---</td> </tr> <tr> <td>1 PLACE</td> <td>± 0.3</td> <td>± ---</td> </tr> </tbody> </table> | | MM | INCH | 4 PLACES | ± --- | ± --- | 3 PLACES | ± --- | ± --- | 2 PLACES | ± 0.10 | ± --- | 1 PLACE | ± 0.3 | ± --- | DIMENSION STYLE MM ONLY | SCALE 2:1 | DESIGN UNITS METRIC | THIRD ANGLE PROJECTION |
|---|-------------------------------|---|-----------------------------------|------------------------------|---------------------|----------|-------|-------|----------|-------|-------|----------|--------|-------|---------|-------|-------|----------------------------|--------------|------------------------|------------------------|
| | | MM | INCH | | | | | | | | | | | | | | | | | | |
| | 4 PLACES | ± --- | ± --- | | | | | | | | | | | | | | | | | | |
| | 3 PLACES | ± --- | ± --- | | | | | | | | | | | | | | | | | | |
| 2 PLACES | ± 0.10 | ± --- | | | | | | | | | | | | | | | | | | | |
| 1 PLACE | ± 0.3 | ± --- | | | | | | | | | | | | | | | | | | | |
| DESCRIPTION G | DRAWN BY L. PULLIAM | DATE 2/3/2006 | TITLE MX64 RECEPTACLE TERMINAL | | | | | | | | | | | | | | | | | | |
| | CHECKED BY D. HEMNANI | DATE 2/3/2006 | MOLEX INCORPORATED | | | | | | | | | | | | | | | | | | |
| | APPROVED BY B. MOSER | DATE 2/3/2006 | MATERIAL NO. SEE TABLE | DOCUMENT NO. SD-33468-001 | SHEET NO. 3 OF 3 | | | | | | | | | | | | | | | | |

THIS DRAWING CONTAINS INFORMATION THAT IS PROPRIETARY TO MOLEX INCORPORATED AND SHOULD NOT BE USED WITHOUT WRITTEN PERMISSION