

PLEASE CHECK WWW.MOLEX.COM FOR LATEST PART INFORMATION

Part Number: [0430252200](#)
Status: **Active**
Overview: [microfit_30](#)
Description: 3.00mm (.118") Pitch Micro-Fit 3.0™ Receptacle Housing, Dual Row, 22 Circuits

Documents:

[3D Model](#) [Product Specification PS-43045 \(PDF\)](#)
[Drawing \(PDF\)](#) [RoHS Certificate of Compliance \(PDF\)](#)

Agency Certification

| | |
|-----|-----------|
| CSA | LR19980 |
| TUV | R72081037 |
| UL | E29179 |

General

| | |
|-----------------------------|-----------------------------|
| Product Family | Crimp Housings |
| Series | 43025 |
| Comments | Polarized to Mating Part |
| Overview | microfit_30 |
| Product Literature Order No | USA-106 |
| Product Name | Micro-Fit 3.0™ |

Physical

| | |
|-------------------------------|-----------------|
| Circuits (maximum) | 22 |
| Circuits Detail | 22 |
| Color - Resin | Black |
| Flammability | 94V-0 |
| Gender | Female |
| Glow-Wire Compliant | No |
| Keying to Mating Part | None |
| Lock to Mating Part | Yes |
| Material - Resin | Polyester |
| Number of Rows | 2 |
| Packaging Type | Bag |
| Panel Mount | No |
| Pitch - Mating Interface (in) | 0.118 In |
| Pitch - Mating Interface (mm) | 3.00 mm |
| Polarized to Mating Part | Yes |
| Stackable | No |
| Temperature Range - Operating | -40°C to +105°C |

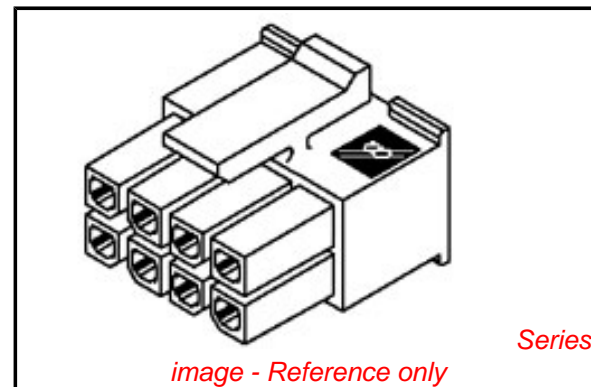
Electrical

| | |
|-------------------------------|----|
| Current - Maximum per Contact | 5A |
|-------------------------------|----|

Material Info

Reference - Drawing Numbers

| | |
|-------------------------|--|
| Packaging Specification | PK-43025-001 |
| Product Specification | PS-43045, RPS-43045-003, RPS-43045-004 |
| Sales Drawing | SDA-43025-**** |
| Test Summary | TS-43045-001 |



EU RoHS

ELV and RoHS Compliant

REACH SVHC

Not Reviewed

Halogen-Free

Status

Not Halogen-Free

China RoHS



Need more information on product environmental compliance?

Email productcompliance@molex.com
 For a multiple part number RoHS Certificate of Compliance, [click here](#)

Please visit the [Contact Us](#) section for any non-product compliance questions.

Search Parts in this Series

[43025Series](#)

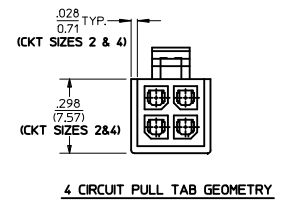
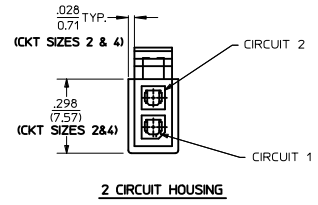
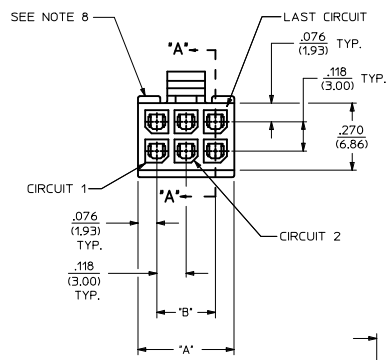
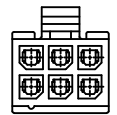
Mates With

Micro-Fit 3.0™ Plug Housing [43020](#). Micro-Fit 3.0™ Header [43045](#). Micro-Fit 3.0™ Test Plug [44242](#)

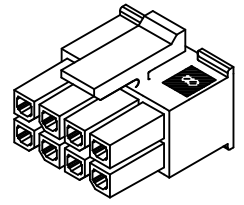
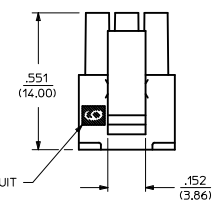
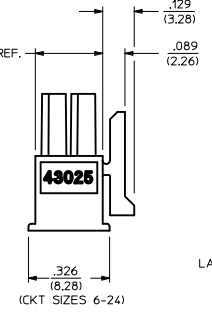
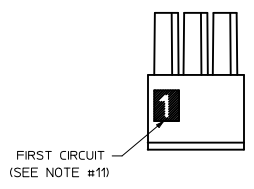
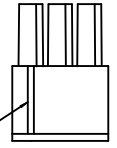
Use With

Micro-Fit 3.0™ Crimp Terminal [43030](#)

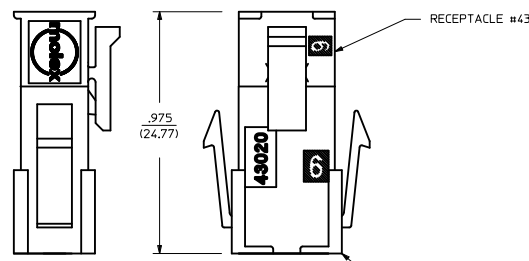
| PART CHARACTERISTICS | | CKT. NO. | DIM. 'A' | DIM. 'B' |
|----------------------|----------------------|----------|---------------|---------------|
| NUMBER OF POSITION | ASSEMBLY ITEM NUMBER | | | |
| 02 | 43025-0200 | 2 | .152/(3.86) | N/A |
| 04 | 43025-0400 | 4 | .270/(6.85) | .118/(3.00) |
| 06 | 43025-0600 | 6 | .388/(9.85) | .236/(6.00) |
| 08 | 43025-0800 | 8 | .506/(12.85) | .354/(9.00) |
| 10 | 43025-1000 | 10 | .624/(15.85) | .472/(12.00) |
| 12 | 43025-1200 | 12 | .742/(18.85) | .591/(15.00) |
| 14 | 43025-1400 | 14 | .860/(21.85) | .709/(18.00) |
| 16 | 43025-1600 | 16 | .978/(24.85) | .827/(21.00) |
| 18 | 43025-1800 | 18 | 1.096/(27.85) | .945/(24.00) |
| 20 | 43025-2000 | 20 | 1.215/(30.85) | 1.063/(27.00) |
| 22 | 43025-2200 | 22 | 1.333/(33.85) | 1.181/(30.00) |
| 24 | 43025-2400 | 24 | 1.451/(36.85) | 1.299/(33.00) |



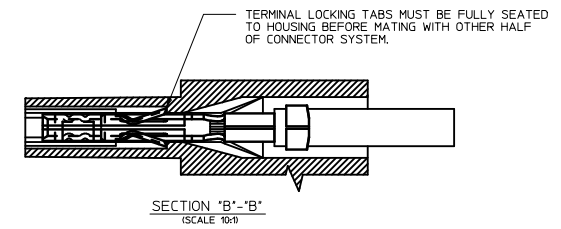
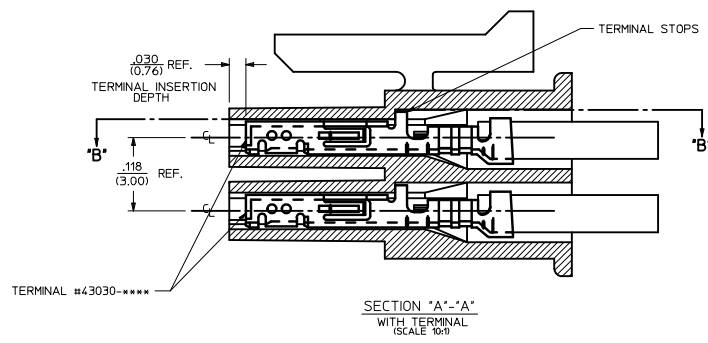
HOUSING SHOWN WITH OPTIONAL FIRST CIRCUIT IDENTIFIER RIB (SEE NOTE #11)



RECEPTACLE ISO VIEW (8 CIRCUIT SHOWN) (SEE NOTE 9 FOR TESTING)



MATED MICRO-FIT CONNECTOR



- NOTES:**
- HOUSING MATERIAL: UNFILLED POLYESTER, RATED UL, 94V-0, COLOR IS BLACK.
 - FINISH: N/A
 - PRODUCT SPECIFICATION: PS-43045
 - PACKAGING SPECIFICATION: PK-43025-001
 - THIS RECEPTACLE MATES WITH 43020, 43045.
 - THIS RECEPTACLE TO BE USED WITH MOLEX FEMALE TERMINAL #43030-****. SEE SECTION 'A'-'A' FOR TERMINAL ORIENTATION IN HOUSING.
 - FOR OVERMOLDING PARAMETERS SEE ENGINEERING SPECIFICATION #SDS-43025-1000.
 - TOP PULL TABS ARE NOT AVAILABLE ON 2 AND 4 CIRCUIT PARTS.
 - MOLEX RECOMMENDS THE USE OF MICRO-FIT TEST PLUG, SERIES NO. 44242-**** WHENEVER TESTING IS PERFORMED. TEST PLUGS MUST NOT BE USED FOR MAKE OR BREAK UNDER LOAD. MOLEX DOES NOT RECOMMEND USING STANDARD MATING COMPONENTS FOR HARNESS TESTING PURPOSES.
 - SOME HOUSINGS MAY HAVE A SMALL GATE BLEMISH NEAR THE GATE THAT DOES NOT AFFECT FUNCTIONALITY.
 - HOUSINGS MAY HAVE EITHER AN IDENTIFIER RIB OR "1" SYMBOL ENGRAVE TO INDICATE CIRCUIT #1.
 - THIS PART CONFORMS TO CLASS 'B' REQUIREMENTS OF COSMETIC SPECIFICATION PS-45499-002.

| | | | | | | | | | |
|---|-------------------------------|---------------------------------------|-----------------------|---------------------------------|--------------------|--|-------------------------------|---|--|
| ADD PK SPEC. NOTES EC NO: UCP2010-0075 DPC/MAS/SOISEK 2009/11/18 CHIKO/BELL 2009/11/25 APPR/ESH/TH 2009/11/30 M1 | QUALITY SYMBOLS ▽=0 ▽=0 | GENERAL TOLERANCES (UNLESS SPECIFIED) | | DIMENSION STYLE IN/MM | | SCALE 4:1 | DESIGN UNITS METRIC | THIRD ANGLE PROJECTION | |
| | | 4 PLACES ± ± | 3 PLACES ± --- ± .010 | DRAWN BY A. F. G. | DATE 1993/01/14 | TITLE MICRO-FIT (3.0) 2 THRU 24 CIRCUIT RECEPTACLE | | | |
| | | 2 PLACES ± 0.25 ± .014 | 1 PLACE ± 0.35 ± --- | CHECKED BY B. A. P. | DATE 1993/01/14 | MOLEX INCORPORATED | | | |
| | | ANGULAR ±1/2° | | APPROVED BY R. A. S. | DATE 1993/01/14 | DOCUMENT NO. SDA-43025-**** | | | |
| DRAFT WHERE APPLICABLE MUST REMAIN WITHIN DIMENSIONS | | SEE CHART | | MATERIAL NO. | | SHEET NO. 1 OF 1 | | THIS DRAWING CONTAINS INFORMATION THAT IS PROPRIETARY TO MOLEX INCORPORATED AND SHOULD NOT BE USED WITHOUT WRITTEN PERMISSION | |