

**PLEASE CHECK WWW.MOLEX.COM FOR LATEST PART INFORMATION**

**Part Number:** [0025021028](#)  
**Status:** **Active**  
**Description:** 2.54mm (.100") Pitch C-Grid® Header, Dual Row, Shrouded, with PC Slot and Guide Ear, 28 Circuits, 0.76µm (30µ") Gold (Au) Selective Plating

**Documents:**

<a href="#">3D Model</a>	<a href="#">Product Specification PS-70204 (PDF)</a>
<a href="#">Packaging Specification (PDF)</a>	<a href="#">RoHS Certificate of Compliance (PDF)</a>
<a href="#">Drawing (PDF)</a>	

**Agency Certification**

CSA	LR19980
UL	E29179

**General**

Product Family	PCB Headers
Series	<a href="#">70204</a>
Application	Board-to-Board
Product Name	C-Grid®

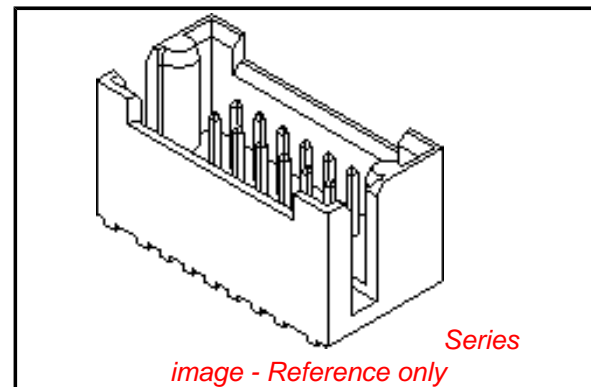
**Physical**

Breakaway	No
Circuits (Loaded)	28
Circuits (maximum)	28
Durability (mating cycles max)	50
Flammability	94V-0
Glow-Wire Compliant	No
Guide to Mating Part	Yes
Lock to Mating Part	None
Material - Metal	Brass, Phosphor Bronze
Material - Plating Mating	Gold
Material - Plating Termination	Tin
Number of Rows	2
Orientation	Vertical
PC Tail Length (in)	0.110 In
PC Tail Length (mm)	2.79 mm
PCB Locator	No
PCB Retention	None
Packaging Type	Tray
Pitch - Mating Interface (in)	0.100 In
Pitch - Mating Interface (mm)	2.54 mm
Plating min: Mating (µin)	30
Plating min: Mating (µm)	0.75
Plating min: Termination (µin)	75
Plating min: Termination (µm)	1.91
Polarized to Mating Part	Yes
Polarized to PCB	No
Shrouded	Fully
Stackable	No
Temperature Range - Operating	-40°C to +105°C
Termination Interface: Style	Through Hole

**Electrical**

Current - Maximum per Contact	3A
Voltage - Maximum	250V

**Solder Process Data**



**EU RoHS**

**ELV and RoHS Compliant**  
**REACH SVHC Contains SVHC: No**  
**Halogen-Free Status**  
**Not Reviewed**

**China RoHS**



**Need more information on product environmental compliance?**

Email [productcompliance@molex.com](mailto:productcompliance@molex.com)  
 For a multiple part number RoHS Certificate of Compliance, [click here](#)

Please visit the [Contact Us](#) section for any non-product compliance questions.

**Search Parts in this Series**

[70204Series](#)

**Mates With**

[71973](#)

Duration at Max. Process Temperature (seconds)	5
Lead-free Process Capability	Wave Capable (TH only)
Max. Cycles at Max. Process Temperature	1
Process Temperature max. C	245

**Material Info**

Old Part Number	70204-0333
-----------------	------------

**Reference - Drawing Numbers**

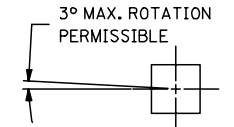
Product Specification	PS-70204
Sales Drawing	SDA-70204-0321-0384

This document was generated on 03/31/2010

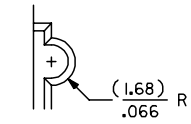
**PLEASE CHECK [WWW.MOLEX.COM](http://WWW.MOLEX.COM) FOR LATEST PART INFORMATION**

CKT. SIZE	PART NUMBER	ENG. NUMBER SDA-70204-	DIM. "A"		DIM. "B"		DIM. "C"	
			MM	IN.	MM	IN.	MM	IN.
			08	25-02-1008	0323	7,62	.300	17,78
10	25-02-1010	0324	10,16	.400	20,32	.800	22,86	.900
12	25-02-1012	0325	12,70	.500	22,86	.900	25,40	1.000
14	25-02-1014	0326	15,24	.600	25,40	1.000	32,51	1.100
16	25-02-1016	0327	17,78	.700	27,94	1.100	30,48	1.200
18	25-02-1018	0328	20,32	.800	30,48	1.200	33,02	1.300
20	25-02-1020	0329	22,86	.900	33,02	1.300	35,56	1.400
22	25-02-1022	0330	25,40	1.000	35,56	1.400	38,10	1.500
24	25-02-1024	0331	27,94	1.100	38,10	1.500	40,64	1.600
26	25-02-1026	0332	30,48	1.200	40,64	1.600	43,10	1.700
28	25-02-1028	0333	33,02	1.300	43,10	1.700	45,72	1.800
30	25-02-1030	0334	35,56	1.400	45,72	1.800	48,26	1.900
32	25-02-1032	0335	38,10	1.500	48,26	1.900	50,80	2.000
34	25-02-1034	0336	40,64	1.600	50,80	2.000	53,34	2.100
36	25-02-1036	0337	43,10	1.700	53,34	2.100	55,88	2.200
38	25-02-1038	0338	45,72	1.800	55,88	2.200	58,42	2.300
40	25-02-1040	0339	48,26	1.900	58,42	2.300	60,96	2.400

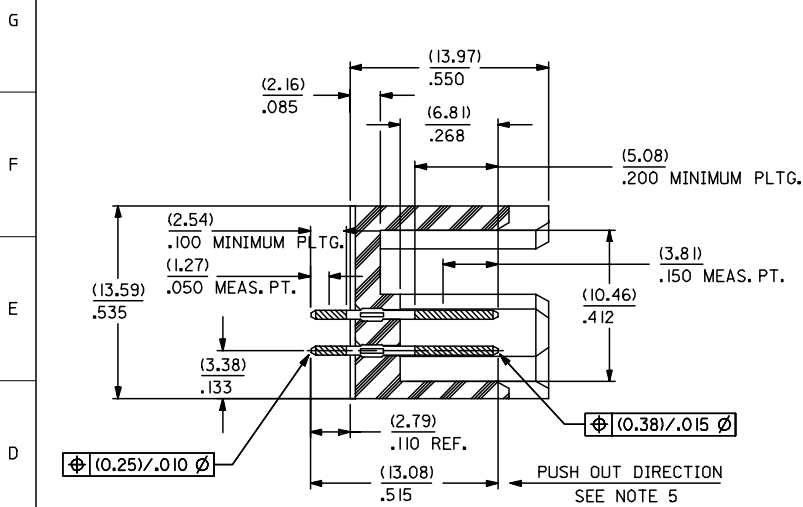
CKT. SIZE	PART NUMBER	ENG. NUMBER SDA-70204-	DIM. "A"		DIM. "B"		DIM. "C"	
			MM	IN.	MM	IN.	MM	IN.
			42	25-02-1042	0340	50,80	2.000	60,96
44	25-02-1044	0341	53,34	2.100	63,50	2.500	66,04	2.600
46	25-02-1046	0342	55,88	2.200	66,04	2.600	68,58	2.700
48	25-02-1048	0343	58,42	2.300	68,58	2.700	71,12	2.800
50	25-02-1050	0344	60,96	2.400	71,12	2.800	73,66	2.900
52	25-02-1052	0345	63,50	2.500	73,66	2.900	76,20	3.000
54	25-02-1054	0346	66,04	2.600	76,20	3.000	78,74	3.100
56	25-02-1056	0347	68,58	2.700	78,74	3.100	81,28	3.200
58	25-02-1058	0348	71,12	2.800	81,28	3.200	83,82	3.300
60	25-02-1060	0349	73,66	2.900	83,82	3.300	86,36	3.400
62	25-02-1062	0350	76,20	3.000	86,36	3.400	88,90	3.500
64	25-02-1064	0351	78,74	3.100	88,90	3.500	91,44	3.600
66	25-02-1066	0352	81,28	3.200	91,44	3.600	93,98	3.700
68	25-02-1068	0353	83,82	3.300	93,98	3.700	96,52	3.800
70	25-02-1070	0354	86,36	3.400	96,52	3.800	99,06	3.900
72	25-02-1072	0355	88,90	3.500	99,06	3.900	101,60	4.000



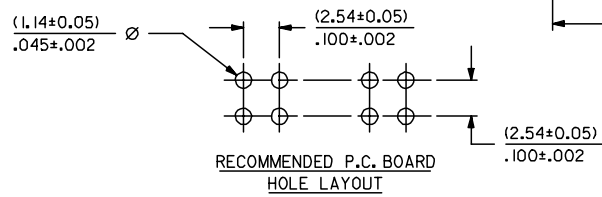
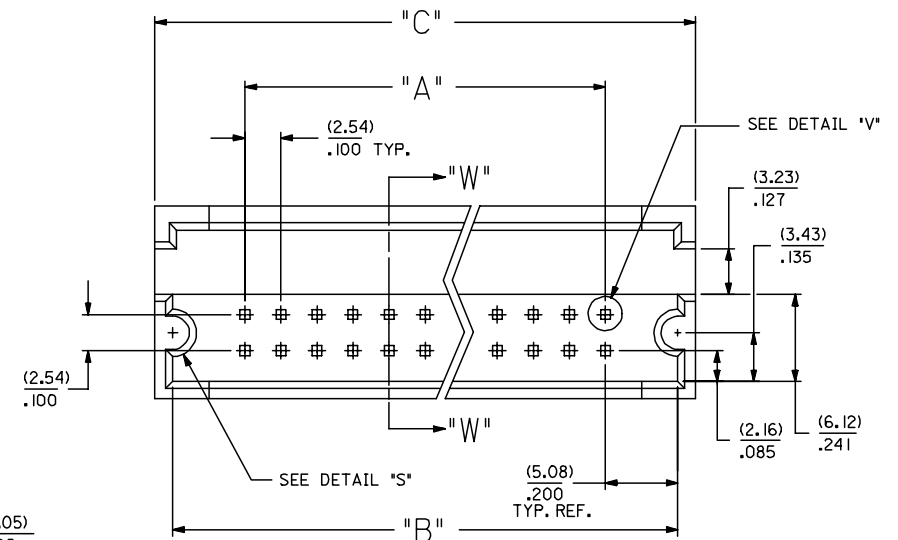
DETAIL "V"  
SCALE = 20:1



DETAIL "S"



SECTION W-W



REMOVE 0356-0384 FC NO: UCP2007-0113 DRAWN: JORGAN 2006/08/07 CHKD: MS BARRA 2006/08/16 APPR: SMILLER 2006/08/18	DESCRIPTION	QUALITY SYMBOLS	GENERAL TOLERANCES (UNLESS SPECIFIED)	DIMENSION STYLE	SCALE	DESIGN UNITS	THIRD ANGLE PROJECTION	
		▽=0	mm INCH	MM/IN	4:1	INCH	☉	
		▽=0	4 PLACES ± --- ± ---	DRAWN BY DATE	JAS 1986/05/20	TITLE	SHROUDED HEADER DUAL ROW W/PCB SLOTS & GUIDE EARS .100 GRID .025 SQ PIN	
			3 PLACES ±0.25 ±.010	CHECKED BY DATE	EIK 1986/05/20	MOLEX INCORPORATED		
		2 PLACES ± --- ± ---	APPROVED BY DATE	WAZ 1986/05/20	MATERIAL NO.	DOCUMENT NO.	SHEET NO.	
		1 PLACE ± --- ± ---	ANGULAR ±1/2°		SEE TABLE		SDA-70204-0321-0384	1 OF 1
DRAFT WHERE APPLICABLE MUST REMAIN WITHIN DIMENSIONS			THIS DRAWING CONTAINS INFORMATION THAT IS PROPRIETARY TO MOLEX INCORPORATED AND SHOULD NOT BE USED WITHOUT WRITTEN PERMISSION					

NOTES:

- 1) WAFER MATERIAL: GLASS FILLED NYLON COLOR, BLACK.
- 2) PIN MATERIAL: PHOSPHOR BRONZE ALLOY
- 3) PIN PLATING:  
TIP: .000030 MINIMUM GOLD IN SELECTED AREA  
TAIL: .000075 MINIMUM TIN IN SELECTED AREA  
OVER .000050 NICKEL OVER-ALL.
- \*THE PRIMARY SHIPPING CARTON WILL BE LABELED 'COMPLIANT TO RoHS DIRECTIVE 2002/95/EC AND ELV ANNEX II OF DIRECTIVE 2000/53/EC'. CARTONS WITHOUT THIS LABEL MAY CONTAIN PRODUCT WITH LEAD.
- 4) PINS MUST MEET SOLDERABILITY SPEC. NO. 152.
- 5) PIN PUSH-OUT FORCE (1.81 KG.)/4 LBS MINIMUM
- 6) REFER TO P.S. NO. 70204.
- 7) STANDARD PACKAGING PER: PK-70873-0070.