

## Clear MIDI® Style Bolt-down Fuse Rated 32V



This MIDI® style fuse offers a bolt-on space saving fuse for high current wiring protection and provides time delay characteristics with "Diffusion Pill Technology". The MIDI® was designed and patented by Littelfuse.

Diese MIDI®-Sicherung bietet eine platz sparende Schraubsicherung zum Schutz von Hochstrom-Verdrahtungen und eine definierte Verzögerungscharakteristik basiert auf unserer speziellen Diffusionstechnologie (Diffusionspille). Die MIDI® Sicherung wurde von Littelfuse entwickelt und patentiert.

### Specifications

**Interrupting Rating:** 1000A @ 32 VDC  
**Voltage Rating:** 32 VDC  
**Operating Temperature Range:** -40°C to + 125°C  
**Packaging:**

Series Serien	Pack Size
0498xxx.M	1000

### Time-Current Characteristics / Schmelzeit-Grenzwerte

% of Rating % des Nennstromes	Opening Time Min / Max (s) Schmelzcharakteristik Min / Max (s)	
	30-125A	150-200A
75	- / -	- / 360,000 s
100	360,000 s / -	- / -
110	14,400 s / -	- / -
150	90 s / 3,600 s	- / -
200	5 s / 100 s	1 s / 15 s
300	0.5 s / 3 s	0.3 s / 3 s
500	0.1 s / 1 s	0.1 s / 1 s

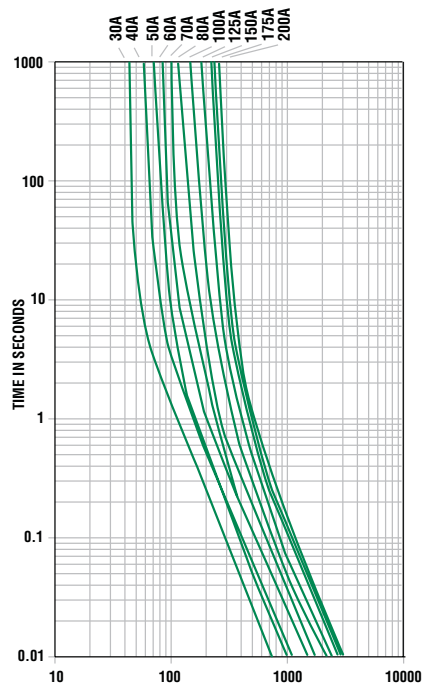
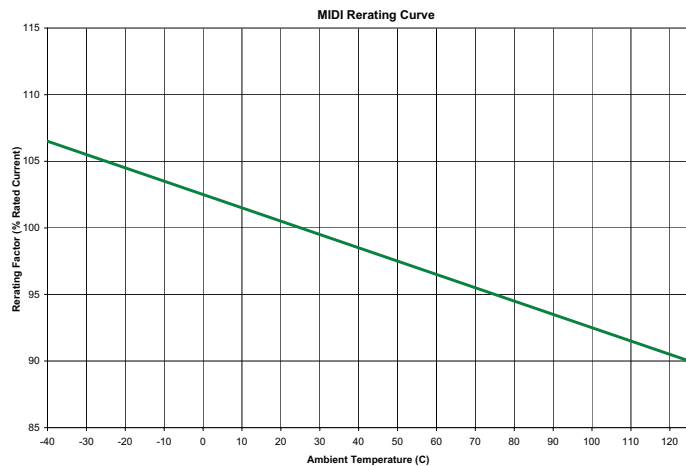
Bolt-down Fuses

Part Number Artikel-Nr.	Current Rating Nennstrom	Color Kennfarbe	Typ. Voltage Drop Typ. Spannungsfall	Cold Resistance Kaltwiderstand	I <sup>2</sup> t
0498030.M	30 A	Orange	65 mV	2.06 mΩ	4200
0498040.M	40 A	Green	65 mV	1.398 mΩ	10000
0498050.M	50 A	Red	65 mV	1.025 mΩ	13000
0498060.M	60 A	Yellow	68 mV	0.865 mΩ	21700
0498070.M	70 A	Brown	70 mV	0.72 mΩ	24000
0498080.M	80 A	White	58 mV	0.541 mΩ	24600
0498100.M	100 A	Blue	60 mV	0.457 mΩ	51300
0498125.M	125 A	Pink	71 mV	0.394 mΩ	73200
0498150.M	150 A	Grey	77 mV*	0.323 mΩ	81900
0498175.M	175 A	Dark Grey	77 mV*	0.285 mΩ	100000
0498200.M	200 A	Purple	77 mV*	0.261 mΩ	125000

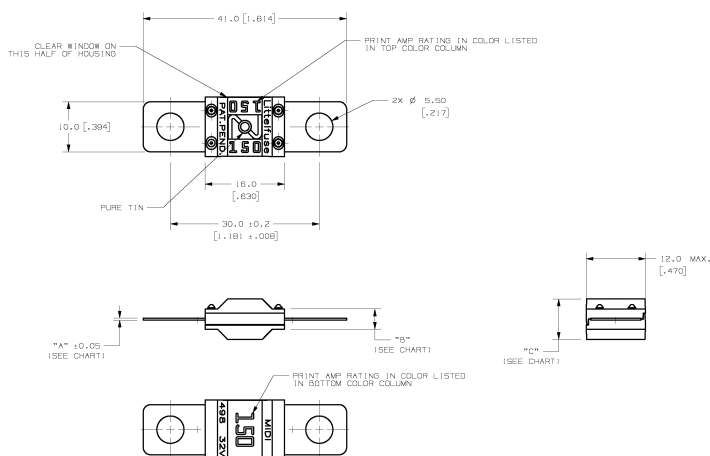
\* Parts with asterik are short circuit protectors only.

**Clear MIDI® Style Bolt-down Fuse Rated 32V**

Bolt-down Fuses



**Dimensions in mm / Maße in mm**



PART NUMBER	AMP RATING	D.C.VOLT RATING	Color of Printing		"A" mm (inches)	"B" mm (inches)	"C" mm (inches)
			TOP	BOTTOM			
0498030.MXT	30	32	ORANGE	ORANGE	.41 (.016)	4.0 (.157)	8.0 (.315)
0498040.MXT	40	32	GREEN	GREEN	.41 (.016)	4.0 (.157)	8.0 (.315)
0498050.MXT	50	32	RED	RED	.41 (.016)	4.0 (.157)	8.0 (.315)
0498060.MXT	60	32	YELLOW	YELLOW	.41 (.016)	4.0 (.157)	8.0 (.315)
0498070.MXT	70	32	BROWN	BROWN	.41 (.016)	4.0 (.157)	8.0 (.315)
0498080.MXT	80	32	WHITE	WHITE	.41 (.016)	4.0 (.157)	8.0 (.315)
0498100.MXT	100	32	BLUE	BLUE	0.63 (.025)	4.3 (.169)	8.3 (.327)
0498125.MXT	125	32	PINK	PINK	0.63 (.025)	4.3 (.169)	8.3 (.327)
0498150.MXT	150	32	BLACK	GREY	0.63 (.025)	4.3 (.169)	8.3 (.327)
0498175.MXT	175	32	DARK GREEN	DARK GREEN	0.63 (.025)	4.3 (.169)	8.3 (.327)
0498200.MXT	200	32	VIOLET	VIOLET	0.63 (.025)	4.3 (.169)	8.3 (.327)