

**PLEASE CHECK WWW.MOLEX.COM FOR LATEST PART INFORMATION**

**Part Number:** [0741395568](#)  
**Status:** **Active**  
**Description:** 1.27mm (.050") Pitch EBBI™ 50D Plug, Surface Mount, Vertical, with Latch, 68 Circuits, 3.00mm (.118") Retention Clip

**Documents:**

[3D Model](#) [Product Specification PS-71660 \(PDF\)](#)  
[Drawing \(PDF\)](#) [RoHS Certificate of Compliance \(PDF\)](#)

**General**

Product Family PCB Headers  
 Series [74139](#)  
 Application Board-to-Board, Wire-to-Board  
 Product Name EBBI™

**Physical**

Breakaway No  
 Circuits (Loaded) 68  
 Circuits (maximum) 68  
 Color - Resin Black  
 Durability (mating cycles max) 500  
 Glow-Wire Compliant No  
 Lock to Mating Part Yes  
 Material - Metal Brass, Phosphor Bronze  
 Material - Plating Mating Gold  
 Material - Plating Termination Tin  
 Material - Resin High Temperature Thermoplastic  
 Number of Rows 2  
 Orientation Vertical  
 PCB Locator Yes  
 PCB Retention Yes  
 PCB Thickness Recommended (in) 0.062 In  
 PCB Thickness Recommended (mm) 1.60 mm  
 Packaging Type Tray  
 Pitch - Mating Interface (in) 0.050 In  
 Pitch - Mating Interface (mm) 1.27 mm  
 Plating min: Mating (µin) 30  
 Plating min: Mating (µm) 0.75  
 Plating min: Termination (µin) 50  
 Plating min: Termination (µm) 1.25  
 Polarized to Mating Part Yes  
 Shrouded Fully  
 Stackable No  
 Temperature Range - Operating -40°C to +105°C  
 Termination Interface: Style Through Hole

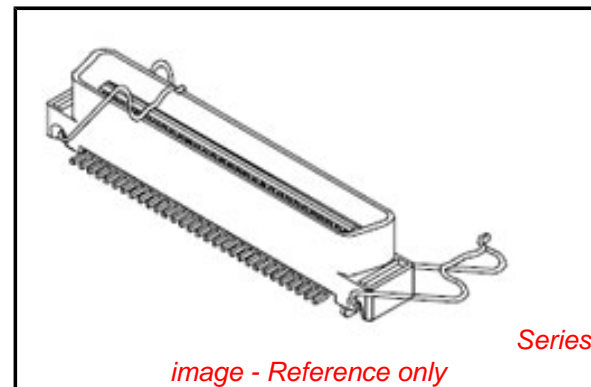
**Electrical**

Current - Maximum per Contact 1A  
 Voltage - Maximum 30V

**Solder Process Data**

Duration at Max. Process Temperature (seconds) 40  
 Lead-free Process Capability Reflow Capable (SMT only)  
 Max. Cycles at Max. Process Temperature 3  
 Process Temperature max. C 260

**Material Info**



*image - Reference only*

**EU RoHS**

**ELV and RoHS Compliant**  
**REACH SVHC**  
 Not Reviewed  
**Halogen-Free Status**  
**Not Reviewed**

**China RoHS**



**Need more information on product environmental compliance?**

Email [productcompliance@molex.com](mailto:productcompliance@molex.com)  
 For a multiple part number RoHS Certificate of Compliance, [click here](#)

Please visit the [Contact Us](#) section for any non-product compliance questions.

**Search Parts in this Series**

[74139Series](#)

**Mates With**

[71660](#) , [87552](#)

**Reference - Drawing Numbers**

Product Specification  
Sales Drawing

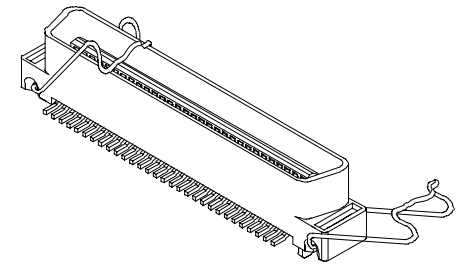
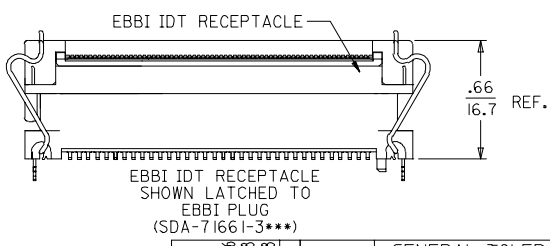
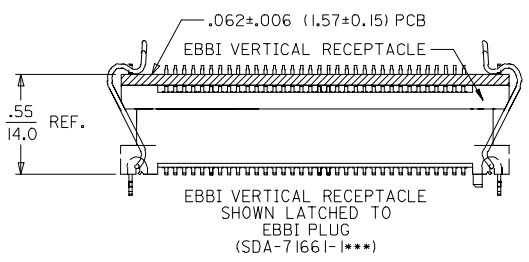
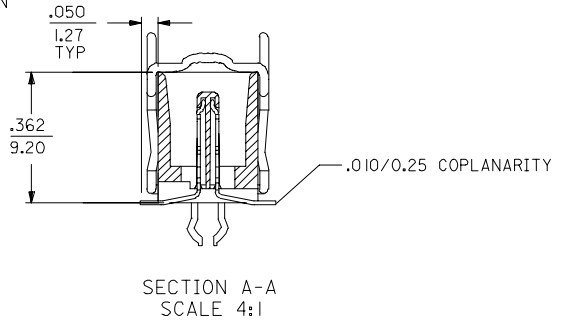
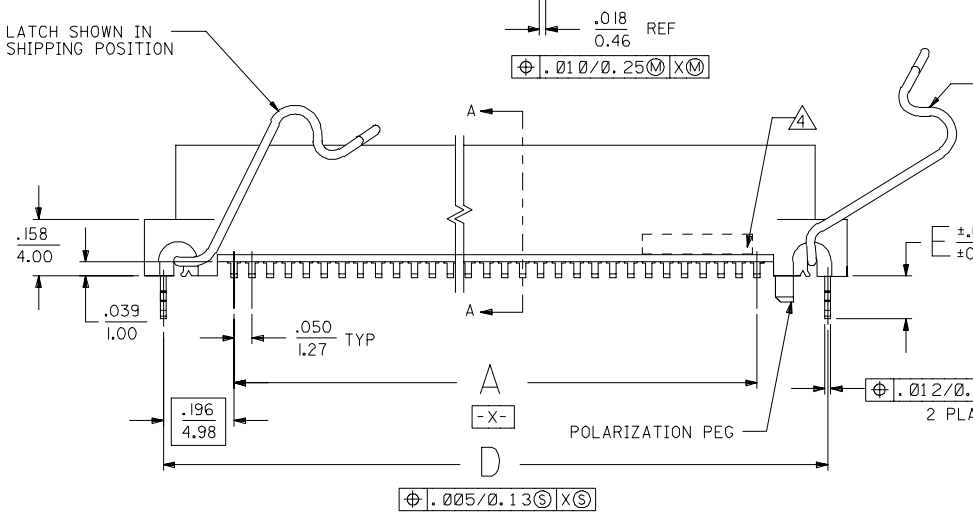
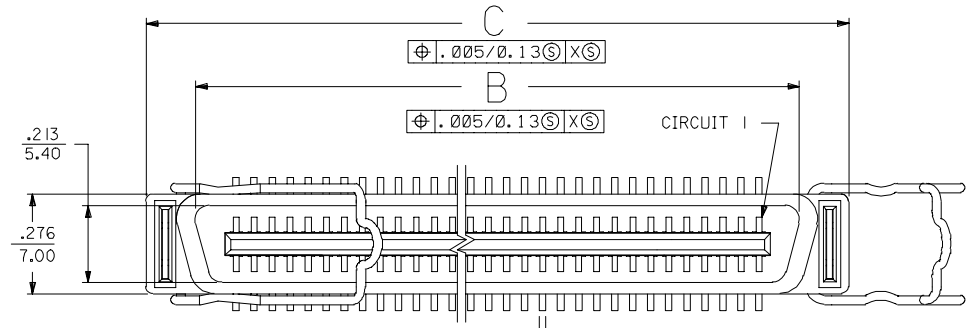
PS-71660  
SD-74139-002

This document was generated on 04/21/2010

**PLEASE CHECK [WWW.MOLEX.COM](http://WWW.MOLEX.COM) FOR LATEST PART INFORMATION**

NOTES:

- 1) MATERIALS:  
 HOUSING: GLASS-FILLED LCP (LIQUID CRYSTAL POLYMER)  
 UL 94 V 0, BLACK  
 TERMINALS: BRASS  
 BOARD LOCKS: PHOSPHOR BRONZE  
 METAL LATCHES: 302 STAINLESS STEEL.
- 2) FINISH:  
 TERMINALS:  
 .000030/(0.00076) MINIMUM GOLD IN CONTACT AREA AND  
 .000050/(0.00127) MINIMUM TIN IN TAIL AREA OVER  
 .000075/(0.00191) MINIMUM NICKEL UNDERPLATING OVERALL.  
 BOARD LOCKS:  
 .000050/(0.00127) MINIMUM TIN
- 3) ASSEMBLY MATES WITH MOLEX P/N SDA-71660-\*\*\*\*,  
 CONFORMS TO PRODUCT SPECIFICATION PS-71660.
- 4) FOUR DIGIT DATE CODE (WK, YR), EXAMPLE => 26 96  
 LOCATED IN AREA INDICATED.



REFERENCE APPLICATION VIEWS

ADD -5540	FC NO: UCP2008-0028	2007/08/08	QUALITY SYMBOLS
DRWN:BBARKER	CHKD: 2007/08/08	2007/08/08	▽=0
APPR:SMILLER	2007/08/08		▽=0
REV	DESCRIPTION		

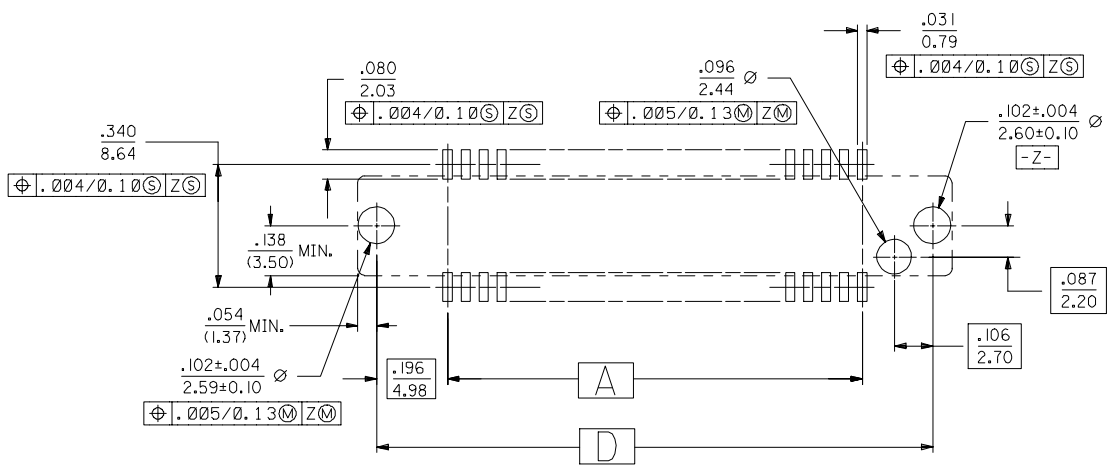
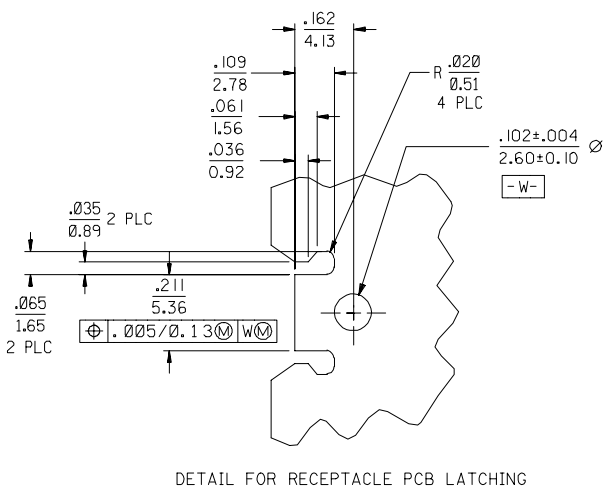
GENERAL TOLERANCES (UNLESS SPECIFIED)	
	mm INCH
4 PLACES	±.005 ±.0005
3 PLACES	±.01 ±.001
2 PLACES	±.02 ±.002
1 PLACE	±.05 ±.005
ANGULAR ±1/2°	
DRAFT WHERE APPLICABLE MUST REMAIN WITHIN DIMENSIONS	

DIMENSION STYLE	
IN/MM	SCALE 1:1
DRAWN BY BSMART	DATE 01/20/2005
CHECKED BY BBARKER	DATE 01/20/2005
APPROVED BY SMILLER	DATE 01/20/2005
MATERIAL NO.	SIZE C
SEE TABLE	

DESIGN UNITS INCH	THIRD ANGLE PROJECTION	TITLE	SHEET NO. 1 OF 2
		SALES ASSY EBBI 50D VERT SMT PLUG-WITH LATCHES, NO VAC CAP	
		MOLEX INCORPORATED	
		DOCUMENT NO. SD-74139-002	

2	D
1	D
SHT	REV

MATERIAL NUMBER	CKT	A	B	C	D	E	PCB THICKNESS	PACKAGING SPEC.
74139-5530	30	.700 (17.78)	.926 (23.52)	1.199 (30.45)	1.092 (27.74)	.118 (3.00)	.062 (1.57)±.006 (0.15)	PK-70873-055
74139-5540	40	.950 (24.13)	1.176 (29.87)	1.449 (36.80)	1.342 (34.09)	.118 (3.00)	.062 (1.57)±.006 (0.15)	PK-70873-055
74139-5660	60	1.450 (36.83)	1.676 (42.57)	1.949 (49.50)	1.842 (46.79)	.118 (3.00)	.062 (1.57)±.006 (0.15)	PK-70873-055
74139-5568	68	1.650 (41.91)	1.876 (47.65)	2.149 (54.58)	2.042 (51.88)	.118 (3.00)	.062 (1.57)±.006 (0.15)	PK-70873-055
74139-5569	68	1.650 (41.91)	1.876 (47.65)	2.149 (54.58)	2.042 (51.88)	.172 (4.37)	.116 (2.95)±.006 (0.15)	PK-70873-055
74139-5600	100	2.450 (62.23)	2.676 (67.97)	2.949 (74.90)	2.842 (72.19)	.118 (3.00)	.062 (1.57)±.006 (0.15)	PK-70873-055



PCB LAYOUT: COMPONENT SIDE  
SEE TABLE FOR RECOMMENDED PCB THICKNESS

ADD -5540 FC NO: UICP2008-0028 DRAWN BY: BBARKER 2007/08/06 CHKD: SDANNELLEY 2007/08/08 APPR: SMILLER 2007/08/08 REVISIONS DESCRIPTION	QUALITY SYMBOLS	GENERAL TOLERANCES (UNLESS SPECIFIED)	DIMENSION STYLE	SCALE	DESIGN UNITS	THIRD ANGLE PROJECTION
	▽=0 ▽=0	mm INCH 4 PLACES ± --- ± --- 3 PLACES ± --- ±.005 2 PLACES ± 0.13 ±.01 1 PLACE ± 0.25 ± --- ANGULAR ±1/2°	IN/MM DRAWN BY: BSMART DATE: 01/20/2005 CHECKED BY: BBARKER DATE: 01/20/2005 APPROVED BY: SMILLER DATE: 01/20/2005	4:1	INCH	TITLE: SALES ASSY EBBI 50D VERT SMT PLUG-WITH LATCHES, NO VAC CAP MOLEX INCORPORATED DOCUMENT NO. SD-74139-002 SHEET NO. 2 OF 2
	DRAFT WHERE APPLICABLE MUST REMAIN WITHIN DIMENSIONS	SEE TABLE	THIS DRAWING CONTAINS INFORMATION THAT IS PROPRIETARY TO MOLEX INCORPORATED AND SHOULD NOT BE USED WITHOUT WRITTEN PERMISSION			