

PLEASE CHECK WWW.MOLEX.COM FOR LATEST PART INFORMATION

Part Number: [0676872550](#)
Status: **Active**
Description: 2.54mm (.100") Pitch SIM Card Connector, Surface Mount, 6 Circuit, 2.50mm (.098") Housing Height, Lead Free

Documents:

[3D Model](#) [Product Specification PS-67687-001 \(PDF\)](#)
[Drawing \(PDF\)](#) [RoHS Certificate of Compliance \(PDF\)](#)

General

Product Family	Memory Card Sockets
Series	67687
Button Type	N/A
Comments	Housing Height: 2.50mm (.098")
Component Type	Header/Socket (Host)
Product Name	SIM
Type	N/A

Physical

Card Detection Switch	N/A
Circuits (Loaded)	6
Circuits (maximum)	6
Color - Resin	Black
Durability (mating cycles max)	10,000
Ejector Button Side	No Ejector Button Present
Entry Angle	N/A
Keying to Mating Part	None
Material - Metal	Phosphor Bronze
Material - Plating Mating	Gold
Material - Plating Termination	Tin
Material - Resin	High Temperature Thermoplastic
PCB Locator	No
PCB Mounting Side	Normal
PCB Retention	None
Packaging Type	Embossed Tape on Reel
Pitch - Mating Interface (in)	0.100 In
Pitch - Mating Interface (mm)	2.54 mm
Pitch - Term. Interface (in)	0.100 In
Pitch - Term. Interface (mm)	2.54 mm
Plating min: Mating (µin)	30
Plating min: Mating (µm)	0.76
Plating min: Termination (µin)	2
Plating min: Termination (µm)	0.05
Ports	1
Temperature Range - Operating	-40°C to +85°C
Termination Interface: Style	Surface Mount

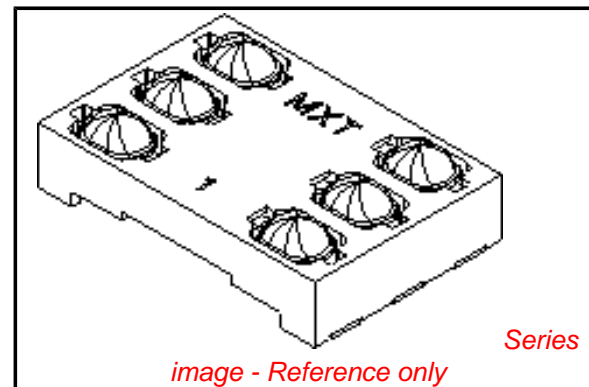
Electrical

Current - Maximum per Contact	0.5A
Shielded	No
Voltage - Maximum	50V DC

Material Info

Reference - Drawing Numbers

Product Specification	PS-67687-001
Sales Drawing	SD-67687-511



EU RoHS

**ELV and RoHS
Compliant**
REACH SVHC
 Not Reviewed
**Halogen-Free
Status**

China RoHS



Not Reviewed

**Need more information on product
environmental compliance?**

Email productcompliance@molex.com
 For a multiple part number RoHS Certificate of
 Compliance, [click here](#)

Please visit the [Contact Us](#) section for any
 non-product compliance questions.

Search Parts in this Series

[67687Series](#)

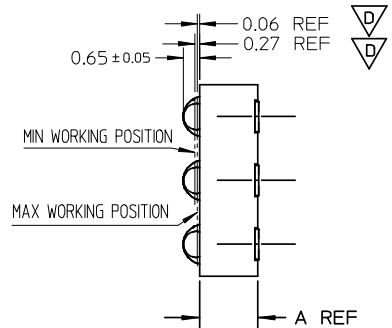
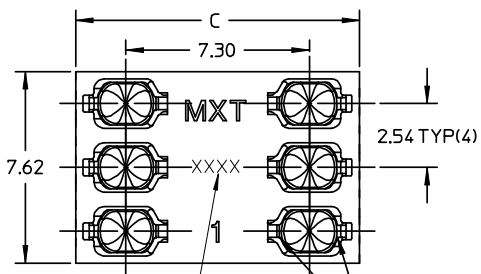
Mates With

Standard SIM Card

This document was generated on 04/07/2010

PLEASE CHECK WWW.MOLEX.COM FOR LATEST PART INFORMATION

10 9 8 7 6 5 4 3 2 1



DIMENSION E	DIMENSION D	DIMENSION C	DIMENSION A	PART NUMBER
9.95	1.00	11.30	1.80	67687-1850
10.05	1.20	11.70	2.00	67687-2050
9.95	1.00	11.30	2.30	67687-2350
9.95	1.00	11.30	2.45	67687-2550
9.95	1.00	11.30	2.90	67687-2950
9.95	1.00	11.30	3.50	67687-3550

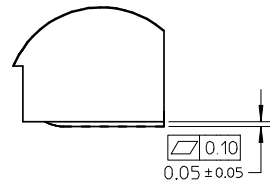
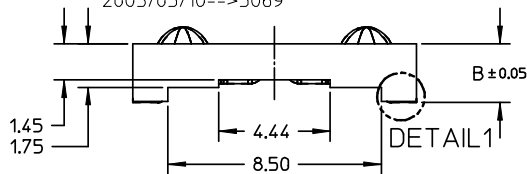
*.DIMB=DIMA+0.05

DATE CODE (INK JET)

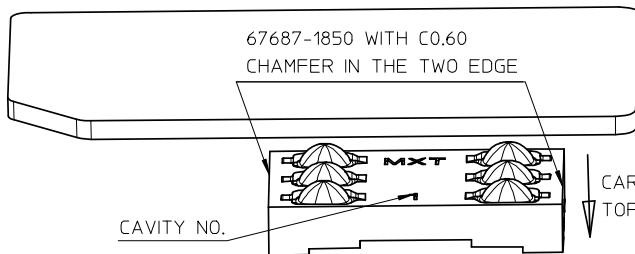
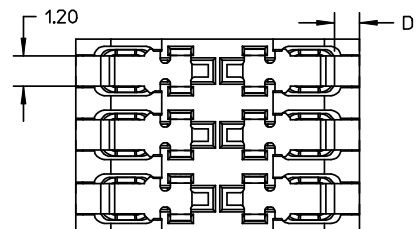
X X X X _ DAY COUNTED FROM FIRST
 _ _ _ _ DAY OF THE YEAR
 _ _ _ _ -YEAR

EX. 2002/01/15-->2015
 2002/02/10-->2041
 2003/03/10-->3069

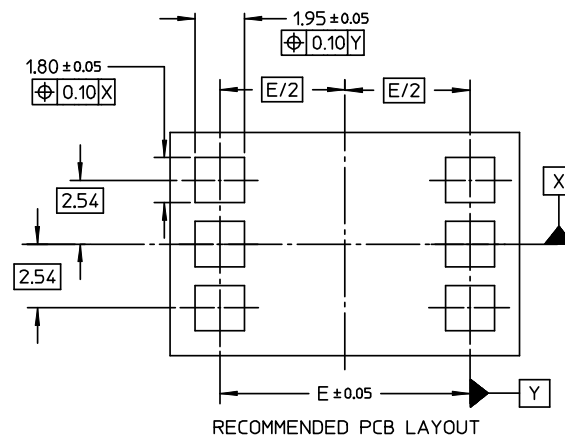
VISIBLE AREA



DETAIL 1



CARD INSERT DIRECTION
 TOP DOWN



RECOMMENDED PCB LAYOUT

NOTES:

- 1 MATERIAL:
 HOUSING: HIGH TEMPERATURE PLASTIC,
 TERMINAL: COPPER ALLOY
- 2. PLATING:
 CONTACT AREA PLATING:
 30u" MIN GOLD OVER 50u" MIN NICKEL PLATING
 SOLDERING AREA PLATING:
 100u" MIN PURE TIN OVER 50u" MIN NICKEL PLATING
 VISIBLE AREA PLATING:
 GOLD FLASH OVER 50u" MIN NICKEL PLATING
- 3. PACKAGING: TAPE REEL
- 4. PRODUCT SPECIFICATION: PS-67687-001
- 5. COMPLIANT TO RoHS DIRECTIVE 2002/95/EC AND
 ELV DIRECTIVE 2000/53/EC.

RELEASE EC NO: SH2008-0471 DRW: PFCU CHKD: YLZHUO APPR: HWANG	2008/03/25	2008/04/11	2008/07/02
	DRW: PFCU	CHKD: YLZHUO	APPR: HWANG
	2008/03/25	2008/04/11	2008/07/02
	DRW: PFCU	CHKD: YLZHUO	APPR: HWANG

QUALITY SYMBOLS	GENERAL TOLERANCES (UNLESS SPECIFIED)	
	mm	INCH
▽=0	4 PLACES ± ---	± ---
▽=0	3 PLACES ± ---	± ---
▽=0	2 PLACES ± 0.05	± ---
▽=0	1 PLACE ± 0.10	± ---
	ANGULAR ± 2 °	

DIMENSION STYLE		SCALE	DESIGN UNITS	THIRD ANGLE PROJECTION
MM ONLY		5:1	METRIC	THIRD ANGLE PROJECTION
DRAWN BY	DATE	TITLE		
SSUN	2004/11/04	6 CKTS SIM CARD CONNECTOR SD DRAWING		
CHECKED BY	DATE			
RZHAO	2004/11/04			
APPROVED BY	DATE			
SAMHUANG	2004/11/04			
MATERIAL NO.	DOCUMENT NO.			
SEE TABLE	SD-67687-511			

MOLEX INCORPORATED		SHEET NO.
		1 OF 1
THIS DRAWING CONTAINS INFORMATION THAT IS PROPRIETARY TO MOLEX INCORPORATED AND SHOULD NOT BE USED WITHOUT WRITTEN PERMISSION		

9 8 7 6 5 4 3 2 1