

PLEASE CHECK WWW.MOLEX.COM FOR LATEST PART INFORMATION

Part Number: [0545592611](#)
Status: **Active**
Description: 2.54mm (0.100") Pitch QF-50™ Flat Cable Receptacle Housing, 26 Circuits

Documents:

[3D Model](#) [Product Specification PS-54559-004 \(PDF\)](#)
[Drawing \(PDF\)](#) [RoHS Certificate of Compliance \(PDF\)](#)

General

Product Family Ribbon Cable / Wire Trap Connectors
 Series [54559](#)
 Component Type Housing
 Glow-Wire Compliant No
 Product Name QF-50™

Physical

Circuits (Loaded) 26
 Color - Resin Black
 Durability (mating cycles max) 500
 Entry Angle 90° Angle
 Lock to Mating Part Yes
 Material - Metal Phosphor Bronze
 Material - Plating Mating Gold
 Material - Plating Termination Gold
 Material - Resin Polyester
 Number of Rows 2
 PCB Retention None
 Packaging Type Tray
 Pitch - Mating Interface (in) 0.100 In
 Pitch - Mating Interface (mm) 2.54 mm
 Plating min: Mating (µin) 12
 Plating min: Mating (µm) 0.3
 Plating min: Termination (µin) 12
 Plating min: Termination (µm) 0.3
 Polarized to Mating Part Yes
 Stackable No
 Surface Mount Compatible (SMC) N/A
 Temperature Range - Operating -40°C to +85°C
 Termination Interface: Style IDT or Pierce
 Wire Insulation Diameter 1.14mm (.045") max.
 Wire Size AWG 28
 Wire/Cable Type Ribbon Cable

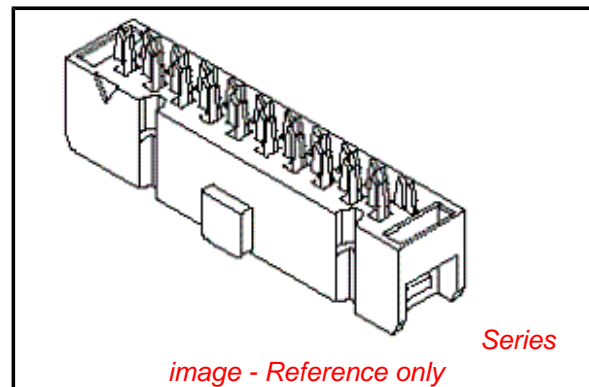
Electrical

Current - Maximum per Contact 1A
 Voltage - Maximum 300V

Material Info

Reference - Drawing Numbers

Product Specification PS-54559-004, RPS-54559-008, RPS-54559-012, RPS-54559-014, RPS-54559-015
 Sales Drawing SD-54559-003



EU RoHS

ELV and RoHS Compliant
REACH SVHC Contains SVHC: No
Halogen-Free Status
Not Reviewed

China RoHS



Need more information on product environmental compliance?

Email productcompliance@molex.com
 For a multiple part number RoHS Certificate of Compliance, [click here](#)

Please visit the [Contact Us](#) section for any non-product compliance questions.

Search Parts in this Series

[54559Series](#)

Mates With

[55401](#) Vertical Header, [55638](#) Right Angle Header

Use With

[54561](#) Strain Relief, [54560](#) Upper Housing

Application Tooling | FAQ

Tooling specifications and manuals are found by selecting the products below. Crimp Height Specifications are then contained in the Application Tooling Specification document.

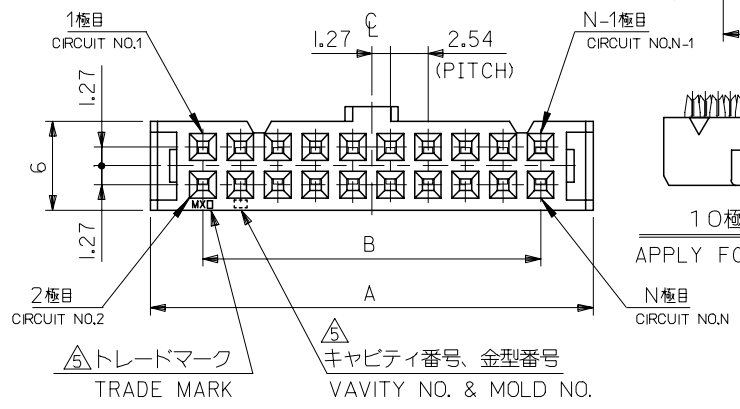
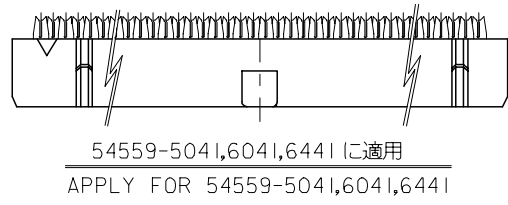
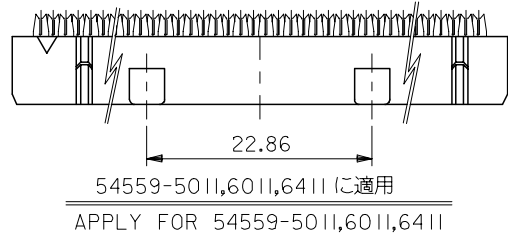
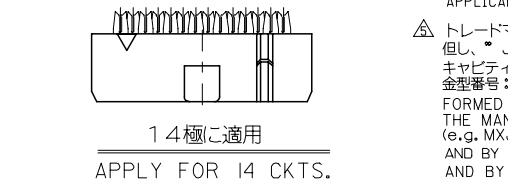
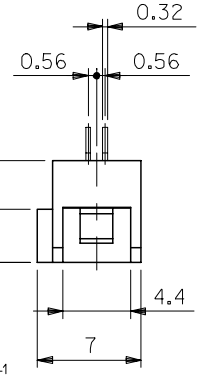
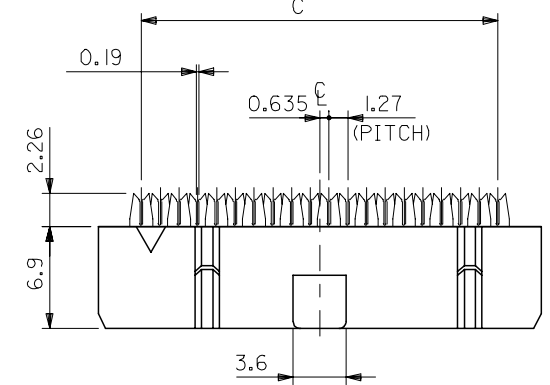
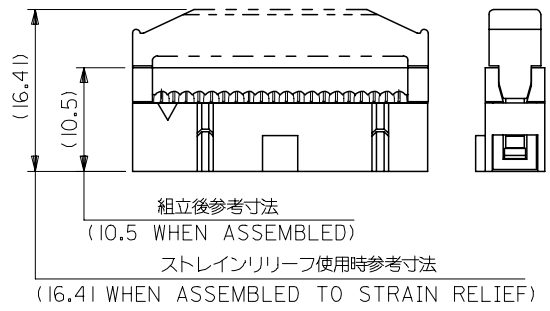
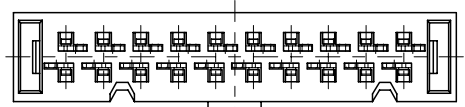
Japan

Description	Product #
IDT Hand Tool Assembly For MIL Connector	0572525000
IDT Machine For MIL Connector	0572527000

This document was generated on 04/16/2010

PLEASE CHECK WWW.MOLEX.COM FOR LATEST PART INFORMATION

10 9 8 7 6 5 4 3 2 1



注記
NOTES

- 材料 ハウジング : PBT (UL94V-0), 黒色
ターミナル : リン青銅 (ツツケ下地金メッキ)
MATERIAL HOUSING : PBT, UL 94V-0, BLACK
TERMINAL : PHOS. BR. (AU PLATING, NI UNDER-PLATING)
- 適用電線 : 1.27ピッチリボンケーブル 被覆外径 : $\phi 1.14$ MAX.
より線 : AWG#28 (芯線7本構成)
FOR USE WITH AWG#28 STRANDED WIRE
(CONSISTS OF 7 CONDUCTORS)
1.14 DIA. MAX. INSULATION RIBBON CABLE WITH 1.27 CENTERS.
- 嵌合相手 : 55401-***11 は 54559-***11 に適用。
55401-***31 は 54559-***41 に適用。
501577 シリ-ズ は 54559-***11 に適用。
55638-***11 は 54559-***11 に適用。
55638-***31 は 54559-***41 に適用。
MATE WITH : 55401-***11 SUITS 54559-***11
55401-***31 SUITS 54559-***41
501577 SERIES SUITS 54559-***11
55638-***11 SUITS 54559-***11
55638-***31 SUITS 54559-***41.
- 適合アッパーハウジング : 54560-***01
APPLICABLE UPPER HSG : 54560-***01
適合ストレーンリリーフ : 54561-***
APPLICABLE STRAIN RELIEF : 54561-***01

△トレードマーク : MXプラス製造工場を示すアルファベットにて構成
但し、"J" は JAPANを示す。(例 MX J)
キャビティ番号 : 数字で表示。
金型番号 : アルファベットにて構成。
FORMED BY MX AND ALPHABET WHICH MEAN
THE MANUFACTORY, BUT "J" MEANS JAPAN. (TO TRADE MARK)
(e.g. MXJ)
AND BY NUMBERS (TO CAVITY NO.)
AND BY ALPHABET (TO MOLD NO.)

C	B	A	MATERIAL NO.	CKT.
80.01	78.74	85.85	54559-6441	64
			54559-6411	
74.93	73.66	80.77	54559-6041	60
			54559-6011	
62.23	60.96	68.07	54559-5041	50
			54559-5011	
49.53	48.26	55.37	54559-4011	40
41.91	40.64	47.75	54559-3411	34
36.83	35.56	42.67	54559-3011	30
31.75	30.48	37.59	54559-2611	26
24.13	22.86	29.97	54559-2011	20
19.05	17.78	24.89	54559-1611	16
16.51	15.24	22.35	54559-1411	14
11.43	10.16	17.27	54559-1011	10
C	B	A	MATERIAL NO.	CKT.

REVISED EC NO: J2007-2853 DRW: NABEI 2007/04/13 CHKD: YMAEDA 2007/04/13 APPR: NUKITA 2007/04/13 DESCRIPTION REV	GENERAL TOLERANCES (UNLESS SPECIFIED)		DIMENSION STYLE MM ONLY		SCALE 3:1	DESIGN UNITS METRIC	THIRD ANGLE PROJECTION
	10 UNDER	±0.2	DRAWN BY S. MATSUZAKI	DATE '99/03/04	TITLE 2.54 FLAT CABLE CONN. REC HOUSING ASSY		
	10 OVER 30 UNDER	±0.25	CHECKED BY S. KUNISHI	DATE '03/08/06			
	30 OVER	±0.3	APPROVED BY T. YAMAGUCHI	DATE '03/08/06	MOLEX INCORPORATED		
	ANGULAR	±3 °	MATERIAL NO.	DOCUMENT NO. SD-54559-003			
DRAFT WHERE APPLICABLE MUST REMAIN WITHIN DIMENSIONS		SIZE A3	THIS DRAWING CONTAINS INFORMATION THAT IS PROPRIETARY TO MOLEX INCORPORATED AND SHOULD NOT BE USED WITHOUT WRITTEN PERMISSION				