

**PLEASE CHECK WWW.MOLEX.COM FOR LATEST PART INFORMATION**

**Part Number:** [0010441061](#)  
**Status:** **Active**  
**Overview:** [kk](#)  
**Description:** 5.08mm (.200") Pitch KK® Header, Vertical, with Polarizing Backwall, 6 Circuits, Gold (Au) Plating

**Documents:**

[3D Model](#) [RoHS Certificate of Compliance \(PDF\)](#)  
[Drawing \(PDF\)](#)

**General**

Product Family	PCB Headers
Series	<a href="#">2599</a>
Application	Wire-to-Board
Overview	<a href="#">kk</a>
Product Name	KK®

**Physical**

Breakaway	No
Circuits (Loaded)	6
Circuits (maximum)	6
Color - Resin	Natural
Durability (mating cycles max)	50
First Mate / Last Break	No
Glow-Wire Compliant	No
Guide to Mating Part	No
Keying to Mating Part	None
Lock to Mating Part	None
Material - Metal	Brass
Material - Plating Mating	Gold
Material - Plating Termination	Nickel
Material - Resin	Nylon
Number of Rows	1
Orientation	Vertical
PC Tail Length (in)	0.175 In
PC Tail Length (mm)	4.45 mm
PCB Retention	None
PCB Thickness Recommended (in)	0.062 In
PCB Thickness Recommended (mm)	1.60 mm
Packaging Type	Bag
Pitch - Mating Interface (in)	0.200 In
Pitch - Mating Interface (mm)	5.08 mm
Shrouded	Partial
Stackable	Yes
Surface Mount Compatible (SMC)	No
Temperature Range - Operating	0°C to +75°C
Termination Interface: Style	Through Hole

**Electrical**

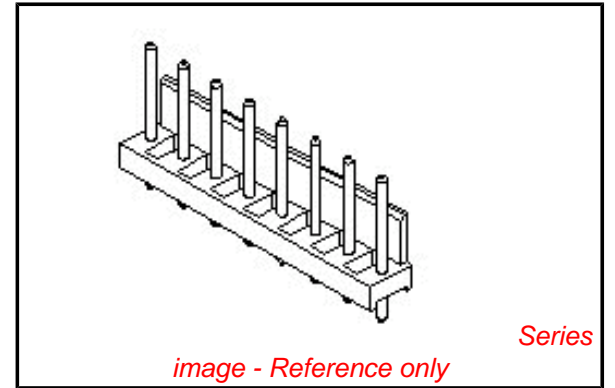
Current - Maximum per Contact	7A
Voltage - Maximum	250V

**Material Info**

Old Part Number	2599-06AG
-----------------	-----------

**Reference - Drawing Numbers**

Sales Drawing	SDA-2599-NAG
---------------	--------------



**EU RoHS** **China RoHS**

**Compliance Status**

**Not Reviewed**

**REACH SVHC**

**Not Reviewed**

**Halogen-Free**

**Status**

**Not Reviewed**

**Need more information on product environmental compliance?**

Email [productcompliance@molex.com](mailto:productcompliance@molex.com)  
 For a multiple part number RoHS Certificate of Compliance, [click here](#)

Please visit the [Contact Us](#) section for any non-product compliance questions.

**Search Parts in this Series**

[2599Series](#)

**Mates With**

KK® Crimp Terminal Housing [3001](#) , [5058](#)

This document was generated on 05/24/2010

**PLEASE CHECK [WWW.MOLEX.COM](http://WWW.MOLEX.COM) FOR LATEST PART INFORMATION**

A-2599-NAG  
 PART NO  
 SEE CHART  
 COMP COMP  
 LOG UPDATE  
 REV A  
 9-12-80  
 10-1-80

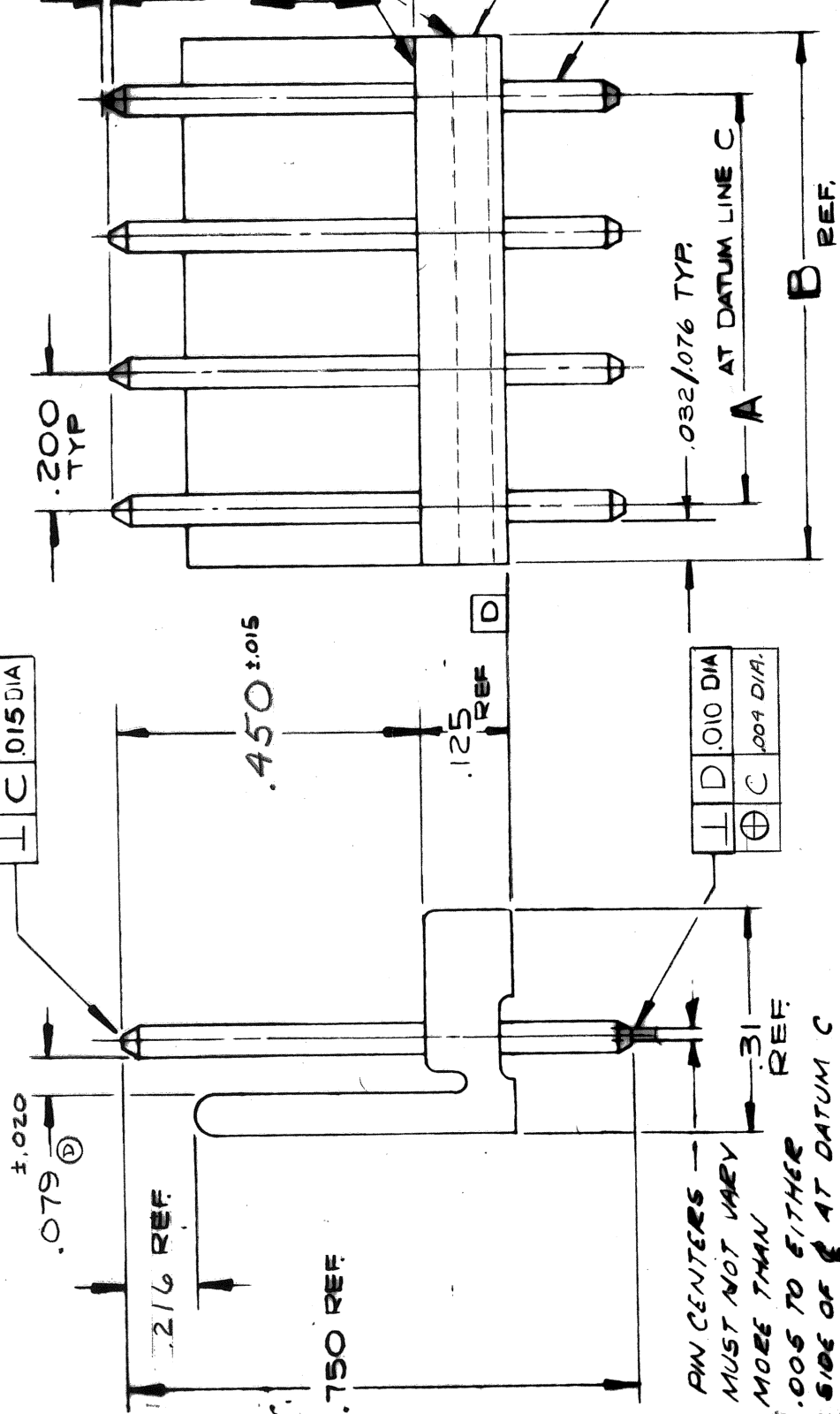
RELATIVE PIN HEIGHTS MUST NOT VARY MORE THAN .005 T.I.R.

SEE NOTE 2

.015 MAX. SAW BURR PERMITTED ON TOP & SIDE EDGES - BOTH ENDS

N<sup>o</sup> 2403 (WAFER)

.045 DIA. PIN, BRASS  
 2173-1G  
 PLATING PER ENG.  
 STD. 88-501.



PIN CENTERS MUST NOT VARY MORE THAN .005 TO EITHER SIDE OF  $\phi$  AT DATUM C

NOTES

- 1 PIN PUSH OUT FORCE: 3 LBS. MIN.
- 2 BURS NOT TO EXTEND BELOW SURFACE  $\phi$
- 3 PIN MUST CONFORM TO MOLEX SOLDERABILITY SPEC. NO. 152 AFTER PLATING.

PART N <sup>o</sup>	ENG N <sup>o</sup>	N <sup>o</sup> OF CIRCUITS	DIM. A	DIM. B
10-44-1181	A-2599-18AG	18	3400 ± .008	2805 / 3501
10-44-1171	-17	17	3200 ± .008	3405 / 3301
10-44-1161	-16	16	3000 ± .007	3204 / 3103
10-44-1151	-15	15	2800 ± .007	3004 / 2902
10-44-1141	-14	14	2600 ± .007	2804 / 2702
10-44-1131	-13	13	2400 ± .006	2603 / 2503
10-44-1121	-12	12	2200 ± .006	2403 / 2303
10-44-1111	-11	11	2000 ± .006	2203 / 2103
10-44-1101	-10	10	1800 ± .005	2002 / 1904
10-44-1091	-9	9	1600 ± .005	1802 / 1704
10-44-1081	-8	8	1400 ± .004	1601 / 1505
10-44-1071	-7	7	1200 ± .004	1401 / 1305
10-44-1061	-6	6	1000 ± .004	1201 / 1105
10-44-1051	-5	5	800 ± .003	1000 / 906
10-44-1041	-4	4	600 ± .003	800 / 706
10-44-1031	-3	3	400 ± .002	599 / 507
10-44-1021	A-2599-2AG	2	200 ± .002	399 / 307

WAFER MATL: NYLON, PER ENG. STD. 1289.1 .200 CENTER DIA.

REV	DESCRIPTION	DATE
F	FIN. REL. -18, -17, -16, -15, -14, -13, -10, JRT	12-20-84
E	ERD 19759	
F	FILMED	
D	ECO5255	
C	ERD 13083	
B	FINAL REL. 2599-8/16	
A	ERD 12688	
-	9-12-80 GEL	
-	9-26-80 JRT GEL	
-	X-RELEASE	
-	ERD N <sup>o</sup> 12481	
-	9-12-80 GEL	

MOLEX PRODUCING WAFER ASSEMBLY

MOLEX ELECTRONIC PRODUCTS CO.

BAJH

9-12-80

A-2599-NAG