

**PLEASE CHECK WWW.MOLEX.COM FOR LATEST PART INFORMATION**

**Part Number:** [0878721123](#)  
**Status:** **Active**  
**Overview:** [KK®](#)  
**Description:** 1.25mm (.049") Pitch Board-to-Board Header, Through Hole, Friction Lock, with Kinked PC Tails, 23 Circuits, Tin (Sn) Overall, Tube Packaging, Lead-free

**Documents:**

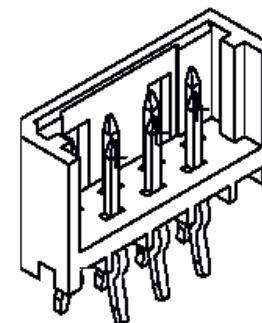
[3D Model](#) [RoHS Certificate of Compliance \(PDF\)](#)  
[Drawing \(PDF\)](#)

**General**

Product Family	PCB Headers
Series	<a href="#">87872</a>
Application	Board-to-Board
Comments	ZIGZAG
Overview	<a href="#">KK®</a>
Product Name	N/A

**Physical**

Breakaway	No
Circuits (Loaded)	23
Circuits (maximum)	23
Color - Resin	Natural
Durability (mating cycles max)	10
First Mate / Last Break	No
Glow-Wire Compliant	No
Guide to Mating Part	No
Keying to Mating Part	None
Lock to Mating Part	Yes
Mated Height (in)	0.274 In
Mated Height (mm)	6.95 mm
Material - Metal	Brass
Material - Plating Mating	Tin
Material - Plating Termination	Tin
Material - Resin	High Temperature Thermoplastic
Number of Rows	2
Orientation	Vertical
PC Tail Length (in)	0.138 In
PC Tail Length (mm)	3.50 mm
PCB Locator	No
PCB Retention	Yes
PCB Thickness Recommended (in)	0.062 In
PCB Thickness Recommended (mm)	1.60 mm
Packaging Type	Tube
Pitch - Mating Interface (in)	0.049 In
Pitch - Mating Interface (mm)	1.25 mm
Plating min: Mating (µin)	120.00
Plating min: Mating (µm)	3.000
Plating min: Termination (µin)	120.00
Plating min: Termination (µm)	3.00
Polarized to Mating Part	Yes
Polarized to PCB	Yes
Shrouded	Partial
Stackable	No
Surface Mount Compatible (SMC)	No
Temperature Range - Operating	-40°C to +105°C



*Series  
image - Reference only*

**EU RoHS**

**ELV and RoHS  
Compliant**  
**REACH SVHC  
Contains SVHC: No**  
**Halogen-Free  
Status**

**China RoHS**



**Not Reviewed**

**Need more information on product  
environmental compliance?**

Email [productcompliance@molex.com](mailto:productcompliance@molex.com)  
For a multiple part number RoHS Certificate of Compliance, [click here](#)

Please visit the [Contact Us](#) section for any non-product compliance questions.

**Search Parts in this Series**

[87872Series](#)

**Mates With**

[KK®](#) PCB Receptacles like 4455. [SL™](#) IDT Housings like 70430. [KK®](#) IDT Housings like 7720 and 70400a. [C-Grid®](#) PCB Receptacles like 90147 and 90148

Termination Interface: Style

Through Hole - Kinked Pin

**Electrical**

Current - Maximum per Contact

2A

Voltage - Maximum

125V

**Material Info**

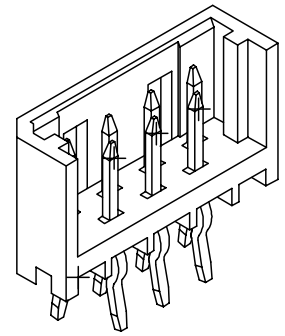
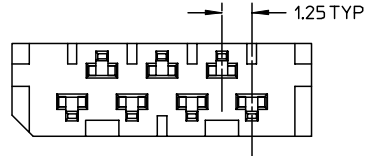
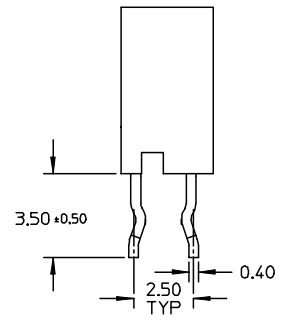
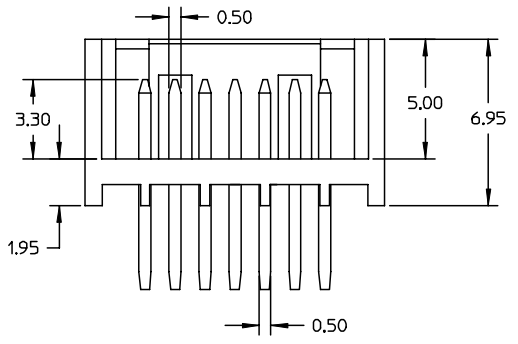
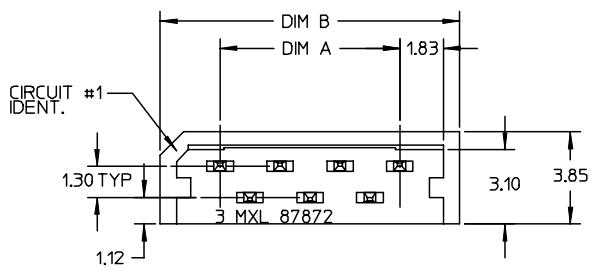
**Reference - Drawing Numbers**

Sales Drawing

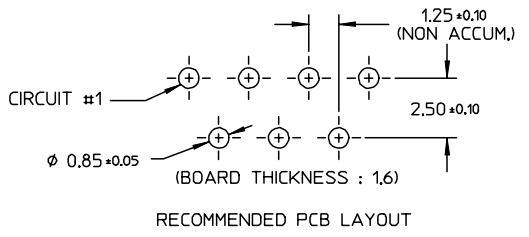
SD-87872-001

This document was generated on 04/19/2010

**PLEASE CHECK [WWW.MOLEX.COM](http://WWW.MOLEX.COM) FOR LATEST PART INFORMATION**



- NOTES :
- MATERIAL :  
 HOUSING : THERMOPLASTIC UL94 V-0  
 TERMINAL : BRASS  
 PLATING : 2.00um(80uin) MIN TIN OVER  
 1.00um(40uin) MIN COPPER OVERALL
  - PART MATEABLE TO 87871-\*\*\*\*



EC NO: S2004-0671 DRWN: BHLOW 2004/04/14 CHKD: PTLIM 2004/04/14 APPR: SKTOH 2004/04/19	QUALITY SYMBOLS	GENERAL TOLERANCES (UNLESS SPECIFIED)		SCALE NTS	DESIGN UNITS METRIC	THIRD ANGLE PROJECTION	REVISE ON CAD ONLY	
	DESCRIPTION ▼ = 0 ▽ = 0	4 PLACES ± --- ± --- 3 PLACES ± --- ± --- 2 PLACES ± 0.20 ± --- 1 PLACE ± --- ± --- ANGULAR ± 3 °	mm	INCH	DIMENSION STYLE MM ONLY		TITLE	
A	REV	DRAFT WHERE APPLICABLE		DRAWN BY BHLOW	DATE 2004/04/01	ZIGZAG 1.25MM , BTB HEADER WITH FRICTION LOCK (LEADFREE)		
		MUST REMAIN WITHIN DIMENSIONS		CHECKED BY PTLIM	DATE 2004/04/14	MOLEX INCORPORATED		
				APPROVED BY SCLOW	DATE 2004/04/14	MATERIAL NO. SEE TABLE	DOCUMENT NO. SD-87872-001	
				THIS DRAWING CONTAINS INFORMATION THAT IS PROPRIETARY TO MOLEX INCORPORATED AND SHOULD NOT BE USED WITHOUT WRITTEN PERMISSION				SHEET NO. 1 OF 1