

**PLEASE CHECK WWW.MOLEX.COM FOR LATEST PART INFORMATION**

**Part Number:** **0038002099**  
**Status:** **Active**  
**Overview:** kk  
**Description:** 2.54mm (.100") KK® IDT Double Cantilever Contact, 9 Circuits, Tin (Sn), Feed-Through, Friction Ramp and Polarizing Rib, Brown ID Strip

**Documents:**

[3D Model](#) [Product Specification PSX-7690S \(PDF\)](#)  
[Drawing \(PDF\)](#) [RoHS Certificate of Compliance \(PDF\)](#)

**Agency Certification**

UL E29179

**General**

Product Family IDT and Solder Connectors  
 Series 7720  
 Comments Version J  
 Crimp Quality Equipment Yes  
 Overview kk  
 Product Name KK®

**Physical**

Circuits (Loaded) 9  
 Circuits (maximum) 9  
 Color - Resin Natural  
 Durability (mating cycles max) 5  
 Flammability 94V-2  
 Gender Female  
 Glow-Wire Compliant No  
 Lock to Mating Part None  
 Material - Metal Brass  
 Material - Plating Mating Tin  
 Material - Plating Termination Tin  
 Material - Resin Nylon  
 Number of Rows 1  
 Packaging Type Bag  
 Panel Mount No  
 Pitch - Mating Interface (in) 0.100 In  
 Pitch - Mating Interface (mm) 2.54 mm  
 Pitch - Term. Interface (in) 0.100 In  
 Pitch - Term. Interface (mm) 2.54 mm  
 Polarized to Mating Part Yes  
 Stackable No  
 Temperature Range - Operating 0°C to +50°C  
 Termination Interface: Style IDT or Pierce  
 Wire Size AWG 26 Stranded, 28 Solid, 28 Stranded Topcoat

**Electrical**

Current - Maximum per Contact 4A  
 Voltage - Maximum 250V

**Solder Process Data**

Lead-free Process Capability Wave Capable (TH only)

**Material Info**

Old Part Number 7720SC09J



**EU RoHS**

**ELV and RoHS Compliant**  
**REACH SVHC**  
 Not Reviewed  
**Halogen-Free Status**  
**Not Reviewed**

**China RoHS**



**Need more information on product environmental compliance?**

Email [productcompliance@molex.com](mailto:productcompliance@molex.com)  
 For a multiple part number RoHS Certificate of Compliance, [click here](#)

Please visit the [Contact Us](#) section for any non-product compliance questions.

**Search Parts in this Series**

7720Series

**Application Tooling | [FAQ](#)**

*Tooling specifications and manuals are found by selecting the products below. Crimp Height Specifications are then contained in the Application Tooling Specification document.*

**Global**

| Description          | Product #         |
|----------------------|-------------------|
| Insertion Tool for   | <u>0638133504</u> |
| 2.54mm (.100") Pitch |                   |
| KK® IDT Crimp        |                   |
| Terminals            |                   |
| IDT - Semi-automatic | <u>0011200412</u> |
| - Bench-Top          |                   |
| Terminator           |                   |

**Reference - Drawing Numbers**

Packaging Specification

Product Specification

Sales Drawing

PK-7720-100

PSX-7690S

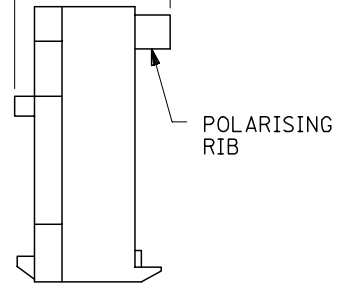
SDA-7720S-\*N\*

This document was generated on 05/19/2010

**PLEASE CHECK [WWW.MOLEX.COM](http://WWW.MOLEX.COM) FOR LATEST PART INFORMATION**



(1.02)  
.040      (5.08)  
.200      (1.78)  
.070



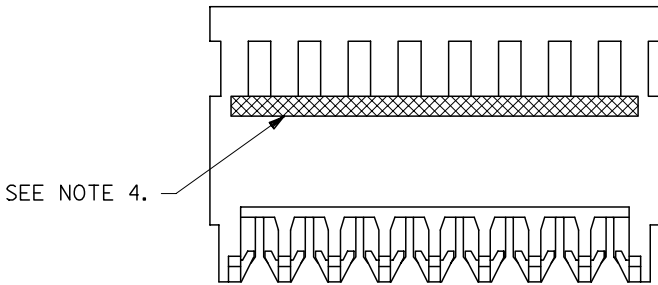
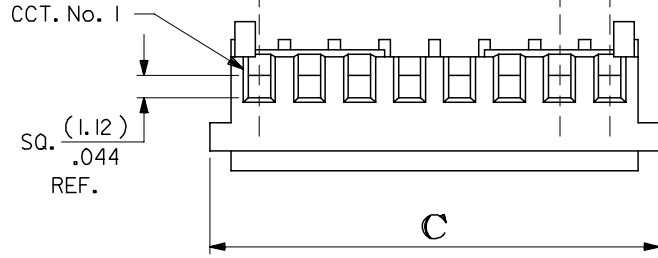
A-7720S- \* N \* - \*  
 BASE No.      VOID LOC'n.  
 TERMINAL DESIGNATION  
 No. OF CCTS.  
HOUSING CONFIGURATION

- WITHOUT BACKWALL { A. HSG, NO RAMP, NO POL. RIBS  
 B. WITH RAMP  
 C. WITH RAMP AND POL. RIB
- WITH BACKWALL { D. HSG, NO RAMP, NO POL. RIB  
 E. WITH RAMP  
 F. WITH RAMP AND POL. RIB

NOTES:

1. MATERIAL: NYLON 6/6, 94V-2, NATURAL.
2. THIS ASSY. IS FOR USE WITH (0.64)/.025 SQ. OR RD. PINS.  
 INSERTION DEPTH (6.10-7.87)/.240-.310
3. THIS ASSY. WILL ACCOMMODATE (1.42)/.056 MAX. INSULATION DIA.
4. COLOURED STRIPE ON FULL LENGTH OF RIB DENOTES WIRE GAUGE (SEE CHART).
5. VOIDS ARE AVAILABLE WITH PIN WINDOWS MOULDED CLOSED.
6. ALL TERMINALS HAVE CAT-EARS CONFIGURATION EXCEPT WHEN GOLD PLATED.
7. FOR STANDARD PARTS SEE SHEETS 2&3.
8. FOR NON STANDARD PLATING OPTIONS SEE SHEET 4.

| NO OF CCTS | DIMn. A           | DIMn. C           |
|------------|-------------------|-------------------|
| 2          | ( 2.54 ) / .100   | ( 7.59 ) / .299   |
| 3          | ( 5.08 ) / .200   | ( 10.13 ) / .399  |
| 4          | ( 7.62 ) / .300   | ( 12.67 ) / .499  |
| 5          | ( 10.16 ) / .400  | ( 15.21 ) / .599  |
| 6          | ( 12.70 ) / .500  | ( 17.75 ) / .699  |
| 7          | ( 15.24 ) / .600  | ( 20.29 ) / .799  |
| 8          | ( 17.78 ) / .700  | ( 22.83 ) / .899  |
| 9          | ( 20.32 ) / .800  | ( 25.37 ) / .999  |
| 10         | ( 22.86 ) / .900  | ( 27.91 ) / 1.099 |
| 11         | ( 25.40 ) / 1.000 | ( 30.45 ) / 1.199 |
| 12         | ( 27.94 ) / 1.100 | ( 32.99 ) / 1.299 |
| 13         | ( 30.48 ) / 1.200 | ( 35.53 ) / 1.399 |
| 14         | ( 33.02 ) / 1.300 | ( 38.07 ) / 1.499 |
| 15         | ( 35.56 ) / 1.400 | ( 40.61 ) / 1.599 |
| 16         | ( 38.10 ) / 1.500 | ( 43.15 ) / 1.699 |
| 17         | ( 40.64 ) / 1.600 | ( 45.69 ) / 1.799 |
| 18         | ( 43.18 ) / 1.700 | ( 48.23 ) / 1.899 |
| 19         | ( 45.72 ) / 1.800 | ( 50.77 ) / 1.999 |
| 20         | ( 48.26 ) / 1.900 | ( 53.31 ) / 2.099 |
| 21         | ( 50.80 ) / 2.000 | ( 55.85 ) / 2.199 |
| 22         | ( 53.34 ) / 2.100 | ( 58.39 ) / 2.299 |
| 23         | ( 55.88 ) / 2.200 | ( 60.93 ) / 2.399 |
| 24         | ( 58.42 ) / 2.300 | ( 63.47 ) / 2.499 |
| 25         | ( 60.96 ) / 2.400 | ( 66.01 ) / 2.599 |
| 26         | ( 63.50 ) / 2.500 | ( 68.55 ) / 2.699 |
| 27         | ( 66.04 ) / 2.600 | ( 71.09 ) / 2.799 |
| 28         | ( 68.58 ) / 2.700 | ( 73.63 ) / 2.899 |



| REVISION UPDATE<br>EC NO: E2007-0125<br>DRWN: WASZKI, EMI CZ 2006/10/10<br>CHKD: D. MORIARTY 2006/10/11<br>APPR: DENNEHY 2006/10/11 | QUALITY SYMBOLS                       | GENERAL TOLERANCES (UNLESS SPECIFIED)  | DIMENSION STYLE MM/IN      | SCALE 4:1                 | DESIGN UNITS METRIC | THIRD ANGLE PROJECTION |                |        |                 |        |                |       |               |  |                   |  |
|---|---------------------------------------|--|----------------------------|---------------------------|---------------------|------------------------|----------------|--------|-----------------|--------|----------------|-------|---------------|--|-------------------|--|
|   | $\nabla = 0$<br>$\sphericalangle = 0$ | <table border="1"> <tr><th>mm</th><th>INCH</th></tr> <tr><td>4 PLACES ± ---</td><td>± ---</td></tr> <tr><td>3 PLACES ± ---</td><td>± .005</td></tr> <tr><td>2 PLACES ± 0.13</td><td>± .010</td></tr> <tr><td>1 PLACE ± 0.25</td><td>± ---</td></tr> <tr><td colspan="2">ANGULAR ± 2 °</td></tr> </table> | mm                         | INCH                      | 4 PLACES ± ---      | ± ---                  | 3 PLACES ± --- | ± .005 | 2 PLACES ± 0.13 | ± .010 | 1 PLACE ± 0.25 | ± --- | ANGULAR ± 2 ° |  | DRAWN BY GCH DATE | TITLE HOUSING I.D. CONNECTOR (2.54)/.100 CENTRES NON\$ |
|   | mm                                    | INCH   |                            |                           |                     |                        |                |        |                 |        |                |       |               |  |                   |  |
|   | 4 PLACES ± ---                        | ± ---  |                            |                           |                     |                        |                |        |                 |        |                |       |               |  |                   |  |
| 3 PLACES ± ---  | ± .005                                |  |                            |                           |                     |                        |                |        |                 |        |                |       |               |  |                   |  |
| 2 PLACES ± 0.13   | ± .010                                |  |                            |                           |                     |                        |                |        |                 |        |                |       |               |  |                   |  |
| 1 PLACE ± 0.25  | ± ---                                 |  |                            |                           |                     |                        |                |        |                 |        |                |       |               |  |                   |  |
| ANGULAR ± 2 °   |                                       |  |                            |                           |                     |                        |                |        |                 |        |                |       |               |  |                   |  |
| DRAFT WHERE APPLICABLE MUST REMAIN WITHIN DIMENSIONS  | APPROVED BY J. DENNEHY DATE           | MATERIAL NO.   | DOCUMENT NO. SDA-7720S-*N* | SHEET NO. 1 OF 4          |                     |                        |                |        |                 |        |                |       |               |  |                   |  |
|   | SIZE A3                               | SEE CHART  |                            | MOLLEX MOLEX INCORPORATED |                     |                        |                |        |                 |        |                |       |               |  |                   |  |

THIS DRAWING CONTAINS INFORMATION THAT IS PROPRIETARY TO MOLEX INCORPORATED AND SHOULD NOT BE USED WITHOUT WRITTEN PERMISSION

10 9 8 7 6 5 4 3 2 1

| PART NO.   | ENG. NO.     | CCTS. | TERMINAL      | I.D. STRIPE | PLATING                                |
|------------|--------------|-------|---------------|-------------|--|
| 38-00-2092 | A-7720S-C 2J | 2     | 40125-J(P918) | BROWN       | HOT TIN DIP<br>(1-3µM)/.000040-.000120 |
| ▲ 2093     | ▲ C 3J       | 3     | ▲             | ▲           |  |
| 2094       | C 4J         | 4     |               |             |  |
| 2095       | C 5J         | 5     |               |             |  |
| 2096       | C 6J         | 6     |               |             |  |
| 2097       | C 7J         | 7     |               |             |  |
| 2098       | C 8J         | 8     |               |             |  |
| 2099       | C 9J         | 9     |               |             |  |
| 2100       | C10J         | 10    |               |             |  |
| 2101       | C11J         | 11    |               |             |  |
| 2102       | C12J         | 12    |               |             |  |
| 2103       | C13J         | 13    |               |             |  |
| 2104       | C14J         | 14    |               |             |  |
| 2105       | C15J         | 15    |               |             |  |
| 2106       | C16J         | 16    |               |             |  |
| 2107       | C17J         | 17    |               |             |  |
| 2108       | C18J         | 18    |               |             |  |
| 2109       | C19J         | 19    |               |             |  |
| 2110       | C20J         | 20    |               |             |  |
| 2111       | C21J         | 21    |               |             |  |
| 2112       | C22J         | 22    |               |             |  |
| 2113       | C23J         | 23    |               |             |  |
| 2114       | C24J         | 24    |               |             |  |
| 2115       | C25J         | 25    |               |             |  |
| 2116       | C26J         | 26    |               |             |  |
| ▼ 2117     | ▼ C27J       | 27    | ▼             | ▼           |  |
| 38-00-2118 | A-7720S-C28J | 28    | 40125-J(P918) | BROWN       |  |

| PART NO.   | ENG. NO.         | CCTS. | TERMINAL     | I.D. STRIPE | PLATING   |
|------------|------------------|-------|--------------|-------------|---|
| 38-00-0579 | A-7720S-C6J(561) | 6     | 40627-J(561) | BROWN       | SELECTIVE GOLD (0.76µM)/.000030 MIN.<br>OVER (1.27µM)/.000050 NICKEL MIN. |

NOTE: 18 - 28 CIRCUITS ARE NON-STANDARD.

|   |                 |                                       |  |                            |   |                          |  |                        |           |
|---|-----------------|---------------------------------------|--|----------------------------|---|--------------------------|--|------------------------|-----------|
| CORRECT PLATING<br>EC NO: E2007-0125<br>DRWN: MASZKI, EMI CZ 2006/10/10<br>CHK'D: MORIARTY 2006/10/11<br>APPR: DENNEHY 2006/10/11 | QUALITY SYMBOLS | GENERAL TOLERANCES (UNLESS SPECIFIED) |  | DIMENSION STYLE<br>MM ONLY |   | SCALE<br>---             | DESIGN UNITS<br>METRIC                                   | THIRD ANGLE PROJECTION |           |
|   | ▼=0<br>▽=0      | mm                                    | INCH   | DRAWN BY<br>MCC            | DATE  | TITLE                    | INSULATION DISPLACEMENT CONNECTOR<br>(2.54)/.100 CENTRES |                        |           |
|   |                 | 4 PLACES ±---                         | ±---   | CHECKED BY<br>D.MORIARTY   | DATE  | molex MOLEX INCORPORATED |  |                        |           |
|   |                 | 3 PLACES ±---                         | ±---   | APPROVED BY<br>J.DENNEHY   | DATE  |                          | MATERIAL NO.   | DOCUMENT NO.           | SHEET NO. |
|   | 2 PLACES ±---   | ±---                                  | DRAFT WHERE APPLICABLE MUST REMAIN WITHIN DIMENSIONS |                            | SEE CHART   | SDA-7720S-*N*            | 3 OF 4   |                        |           |
|   | 1 PLACE ±---    | ±---                                  |  |                            | THIS DRAWING CONTAINS INFORMATION THAT IS PROPRIETARY TO MOLEX INCORPORATED AND SHOULD NOT BE USED WITHOUT WRITTEN PERMISSION |                          |  |                        |           |
|   | ANGULAR ±---°   |                                       |  |                            |   |                          |  |                        |           |

9 8 7 6 5 4 3 2 1