



TAI-SAW TECHNOLOGY CO., LTD.

No. 3, Industrial 2nd Rd., Ping-Chen Industrial District,
Taoyuan, 324, Taiwan, R.O.C.

TEL: 886-3-4690038 FAX: 886-3-4697532

E-mail: tstsales@mail.taisaw.com Web: www.taisaw.com

Approval Sheet For Product Specification

Issued Date:

Product Name: SAW Filter 1150MHz SMD 3.0x3.0mm

TST Parts No.:TA0314A

Customer Parts No.:_____

Company: _____
Division: _____
Approved by : _____
Date: _____

Checked by: _____ Elvis Chiu

Approval by: _____ Francis Chen

Date: _____ 2003/11/14



TAI-SAW TECHNOLOGY CO., LTD.

No. 3, Industrial 2nd Rd., Ping-Chen Industrial District,
Taoyuan, 324, Taiwan, R.O.C.

TEL: 886-3-4690038 FAX: 886-3-4697532

E-mail: tstsales@mail.taisaw.com Web: www.taisaw.com

SAW Filter 1150 MHz

MODEL NO.: TA0314A

REV. NO.:1

A. MAXIMUM RATING:

1. Input Power Level: 10 dB_m
2. DC voltage: 5V
3. Operating Temperature: -10°C to +85°C
4. Storage Temperature: -40°C to +85°C

RoHS Compliant
Lead free
Lead-free soldering

B. ELECTRICAL CHARACTERISTICS:

Balanced to balanced operation

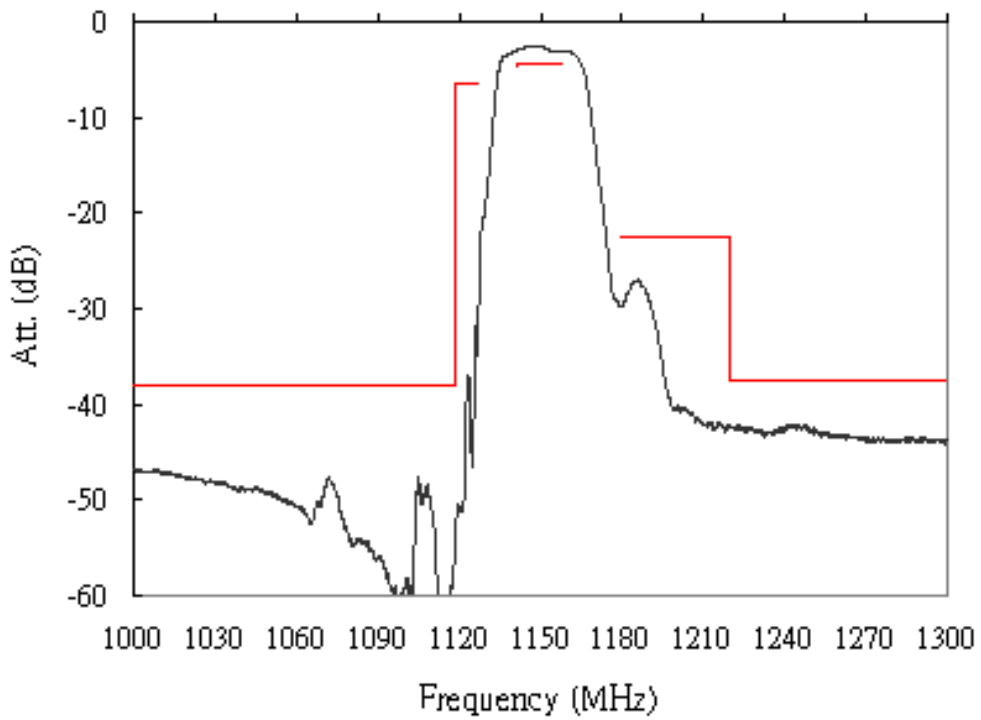
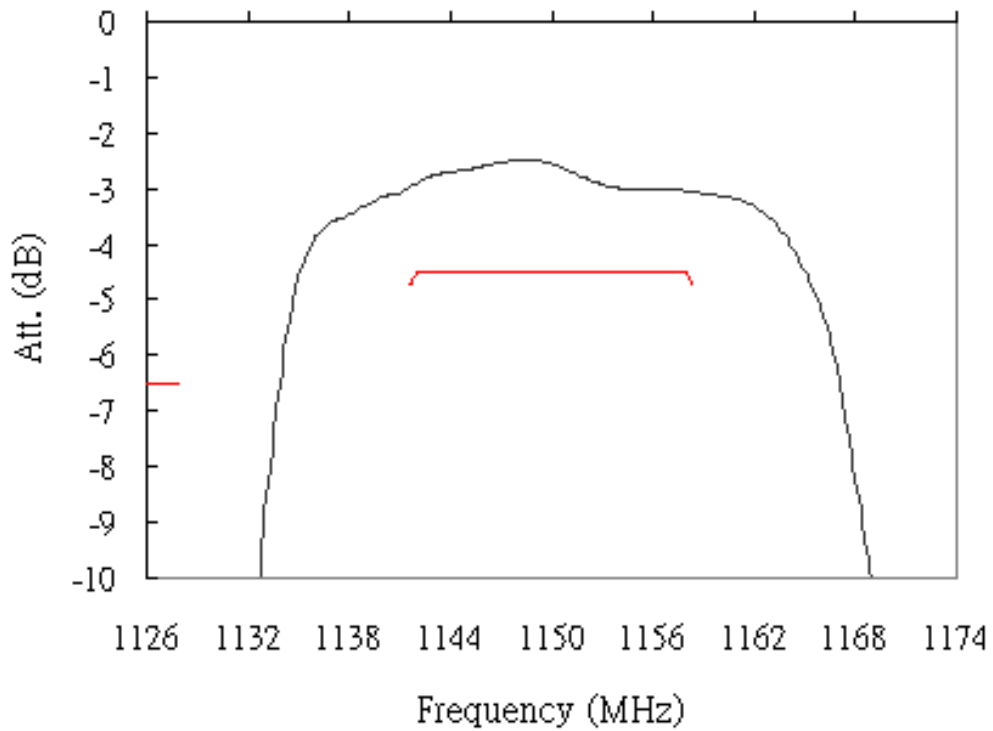
Terminating source impedance: $Z_S=100\Omega$

Terminating load impedance: $Z_L=100\Omega$

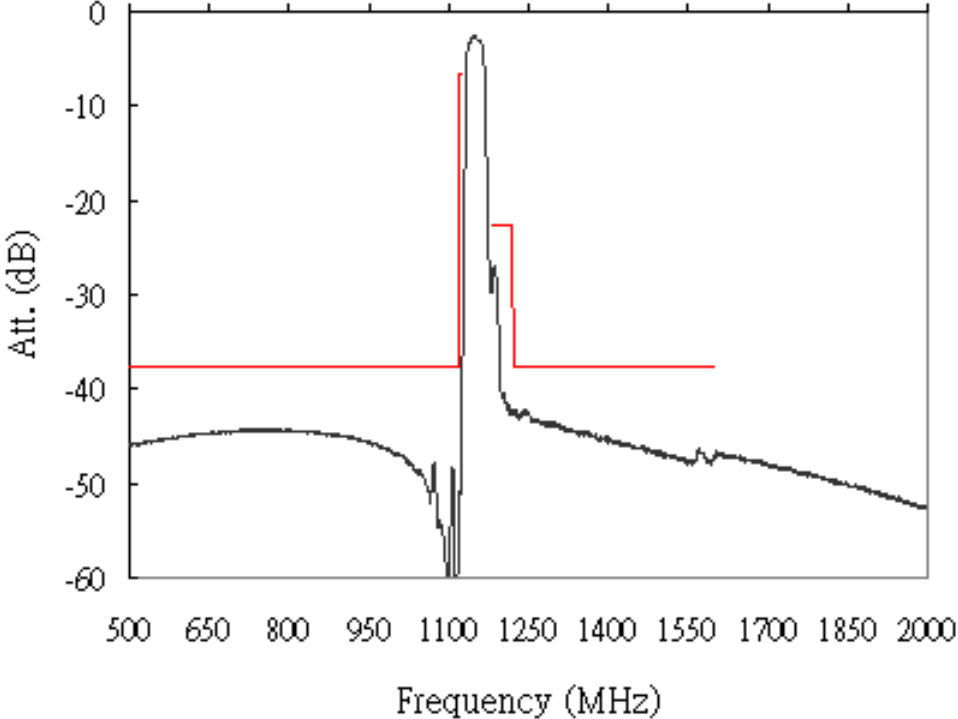
Item	Unit	Min.	Type.	Max.
Center frequency F _c	MHz	-	1150	-
Insertion Loss 1142~1158 MHz IL _{min} (reference level)	dB	-	2.5	5.0
Ripple 1145~1155MHz	dB	-	0.6	-
Ripple 1142~1158MHz	dB	-	0.7	2.0
Absolute Group Delay (at 1150MHz)	ns		38	80
Group Delay Variation 1142~1158MHz	ns		12	90
Attenuation:(Reference level from IL _{min})				
500 ~ 1118 MHz	dB	35	42	-
1118 ~ 1128 MHz	dB	4	20	-
1180 ~ 1220 MHz	dB	20	24	-
1220 ~ 1600 MHz	dB	35	40	-

Note: IL_{min} is the minimum of the pass band attenuation. The center frequency F_c is the mean value of the upper and lower frequencies at the 2dB filter attenuation level relative to the IL_{min}.

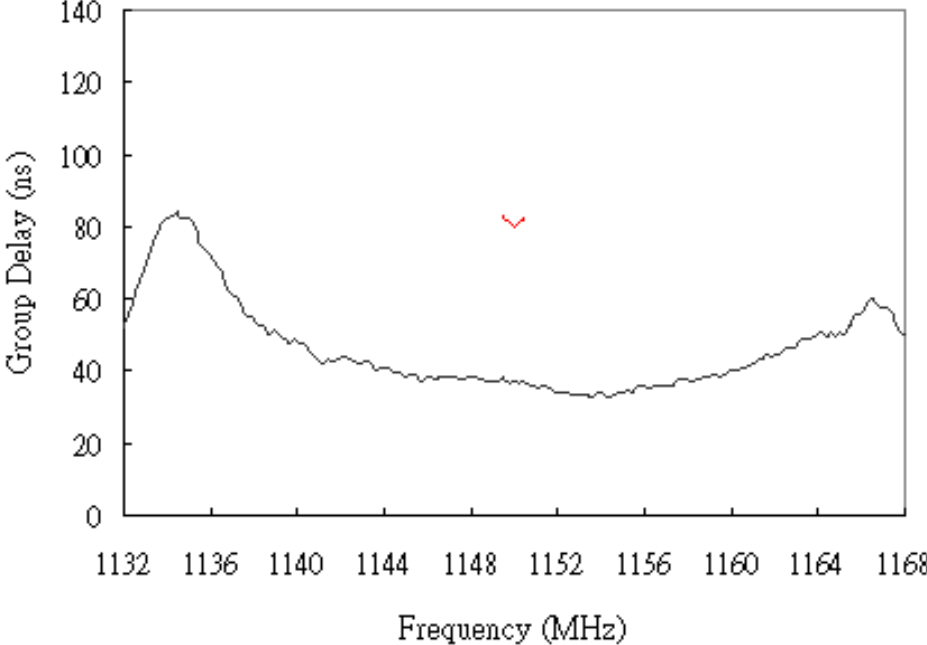
C. Frequency Characteristics :
Transfer Function



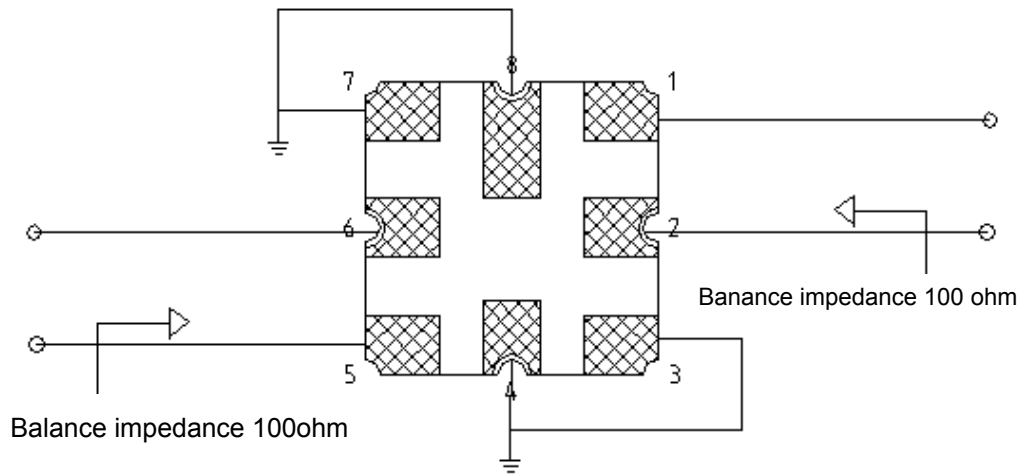
Wideband



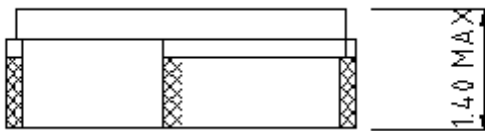
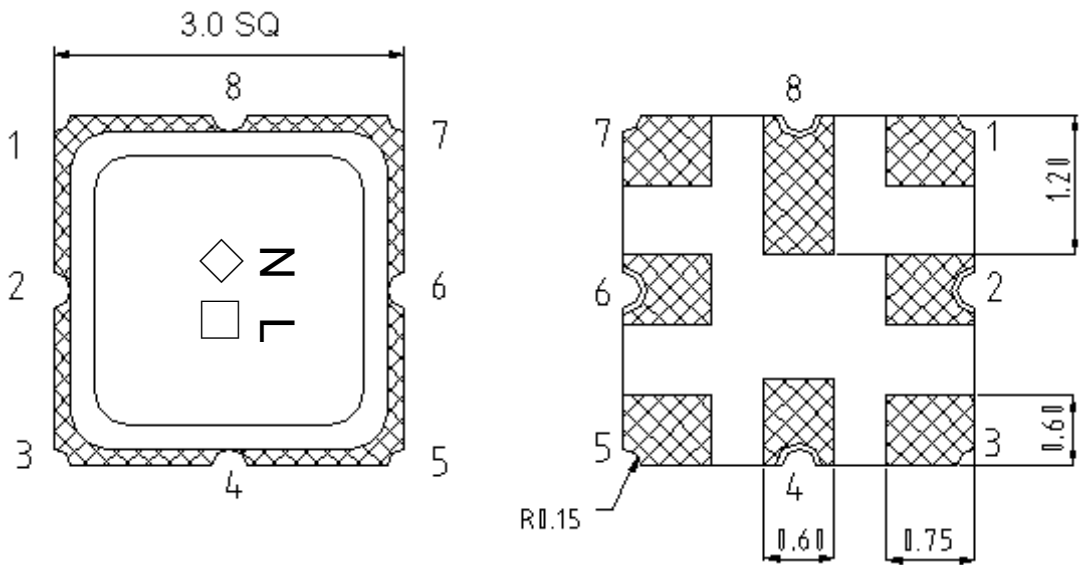
Group Delay



D. MEASUREMENT CIRCUIT:



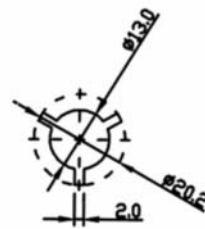
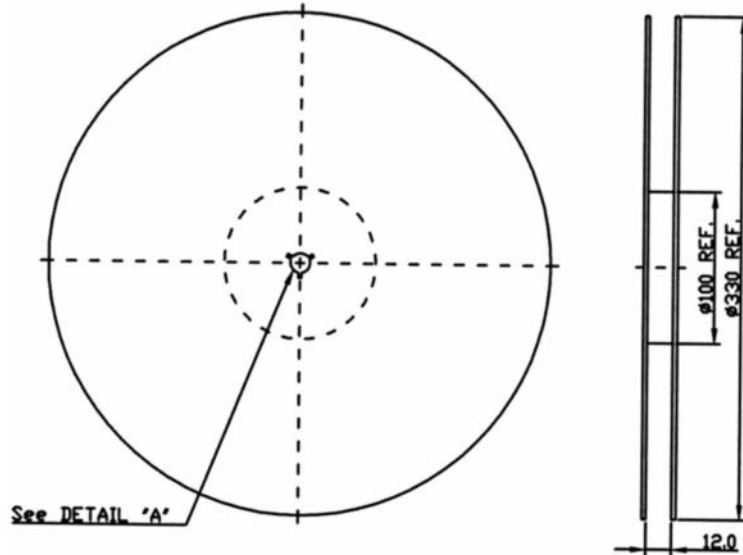
E. OUTLINE DRAWING:



- Pin 1,2 : Balanced Input
- Pin 5,6 : Balanced Output
- P3,4,7,8 : Ground
- ◇ : Year Code
- : Date Code
- Unit : mm

F. PACKING:

1. REEL DIMENSION



2. TAPE DIMENSION

