



Data Sheet



Product Category: IF SAW Filter

Part Number	Package	Application	Last Modified
824-IF70.0M-WA	24.7 x9.0 SMD	70.0 MHz IF SAW Filter	Jan. 01, 2007

TYPE :
70.0 MHz IF SAW Filter

PART NUMBER :
824-IF70.0M-WA



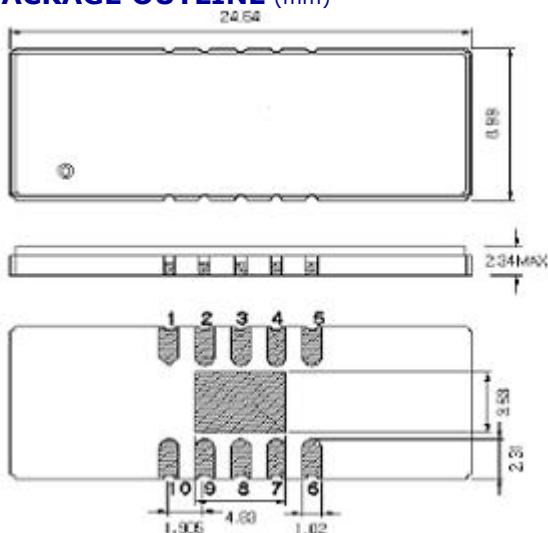
OPERATING CONDITIONS / ELECTRICAL CHARACTERISTICS

PARAMETERS	Minimum	Typical	Maximum	Units
Center Frequency (Fo)	-	70.0	-	MHz
Insertion Loss	-	8.5	12.0	dB
Source Impedance (single ended)*	-	50	-	ohm
Load Impedance (single ended)*	-	50	-	ohm
Temperature Coefficient	-	-0.03	-	ppm/C
Amplitude Ripple within fo+/-50.0Khz	-	0.4	1.0	dBp-p
3dB Bandwidth	0.25	0.33	-	MHz
50dB Bandwidth	-	0.98	1.1	MHz
Relative Attenuation:				
from 10.0 to 69.2 MHz	50	57	-	dB
from 70.8 to 110.0 MHz	50	57	-	dB
Absolute Delay at Fo	-	3.22	-	µsec
IN/OUT Return Loss at Fo	-	-	-	dB

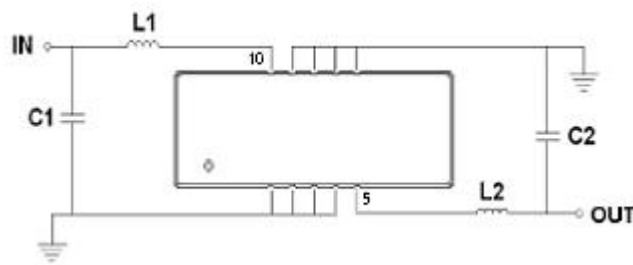
*With Matching Network (Ref. Testing Environment Circuit as shown below). Those impedances could be modified with different impedance values and/or structures, if necessary.

** Custom SAW IF Filters available. Contact Oscilent for assistance.

PACKAGE OUTLINE (mm)

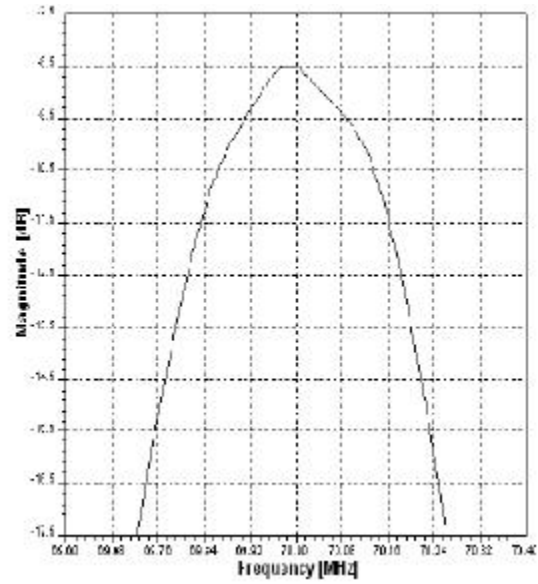
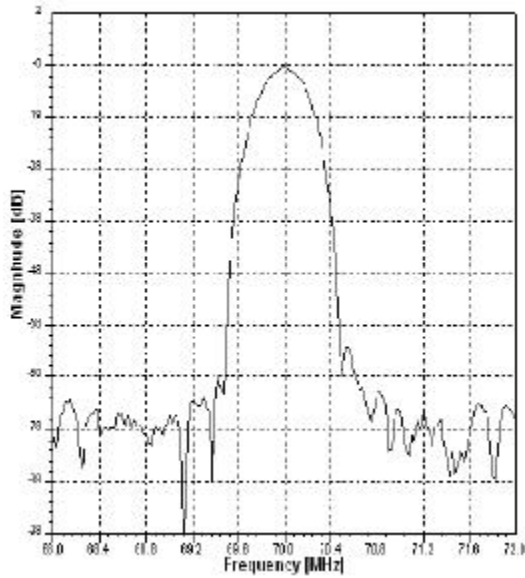


TEST FIXTURE



L1 = 200nH L2 = 180nH
 Q > 40 Q > 40
 C1 = 100pF C2 = 51pF
 Source/Load Impedance = 50 ohms

Pin Descriptions: IN-10, OUT-5, GROUND- 1,2,3,4,6,7,8,9

FREQUENCY RESPONSE

Oscilent Corporation - CALL **949.252.0522**

18195 East McDermott Street, Building D, Irvine, CA 92614, USA
Fax: 949.252.0599, E-Mail: Sales@Oscilent.com

Part No.: **824-IF70.0M-WA**