

PLEASE CHECK WWW.MOLEX.COM FOR LATEST PART INFORMATION

Part Number: [0022051022](#)
Status: **Active**
Description: 2.50mm (.098") Pitch Wire-to-Board Header, Right Angle, Friction Lock, 2 Circuits, Tin (Sn) Plating

Documents:

| | |
|---|--|
| 3D Model | Product Specification PS-51191-002 (PDF) |
| Drawing (PDF) | Product Specification PS-5251-001 (PDF) |
| Product Specification PS-5046-002 (PDF) | RoHS Certificate of Compliance (PDF) |

Agency Certification

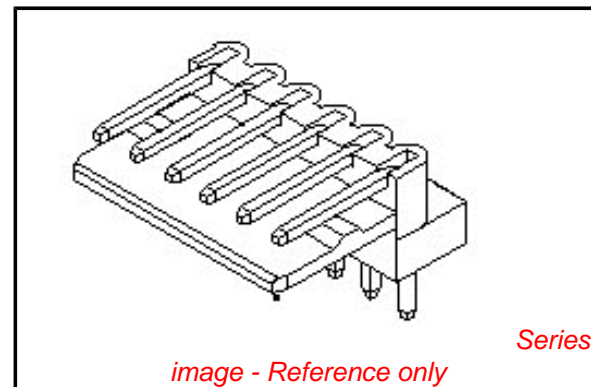
| | |
|-----|-----------|
| CSA | LR19980 |
| TUV | R72090224 |
| UL | E29179 |

General

| | |
|----------------|----------------------|
| Product Family | PCB Headers |
| Series | 5046 |
| Application | Wire-to-Board |
| Product Name | N/A |

Physical

| | |
|--------------------------------|-----------------|
| Breakaway | No |
| Circuits (Loaded) | 2 |
| Circuits (maximum) | 2 |
| Durability (mating cycles max) | 30 |
| First Mate / Last Break | No |
| Flammability | 94V-0 |
| Glow-Wire Compliant | No |
| Guide to Mating Part | No |
| Keying to Mating Part | None |
| Lock to Mating Part | Yes |
| Material - Plating Mating | Tin |
| Material - Plating Termination | Tin |
| Number of Rows | 1 |
| Orientation | Right Angle |
| PC Tail Length (in) | 0.134 In |
| PC Tail Length (mm) | 3.40 mm |
| PCB Locator | No |
| PCB Retention | None |
| PCB Thickness Recommended (in) | 0.062 In |
| PCB Thickness Recommended (mm) | 1.60 mm |
| Packaging Type | Bag |
| Pitch - Mating Interface (in) | 0.098 In |
| Pitch - Mating Interface (mm) | 2.50 mm |
| Plating min: Mating (µin) | 200 |
| Plating min: Mating (µm) | 5 |
| Plating min: Termination (µin) | 200 |
| Plating min: Termination (µm) | 5 |
| Polarized to PCB | No |
| Shrouded | Partial |
| Stackable | No |
| Surface Mount Compatible (SMC) | No |
| Temperature Range - Operating | -40°C to +105°C |
| Termination Interface: Style | Through Hole |



EU RoHS

ELV and RoHS Compliant
REACH SVHC Contains SVHC: No
Halogen-Free Status
Not Halogen-Free

China RoHS



Need more information on product environmental compliance?

Email productcompliance@molex.com
 For a multiple part number RoHS Certificate of Compliance, [click here](#)

Please visit the [Contact Us](#) section for any non-product compliance questions.

Search Parts in this Series

[5046Series](#)

Mates With

[51191 KK® Wire-to-Board Header](#)

Electrical

Current - Maximum per Contact 1.5A, 2.5A, 2A, 3A
Voltage - Maximum 250V

Material Info

Old Part Number 5046-02A

Reference - Drawing Numbers

Packaging Specification SPK-5046-001
Product Specification PS-5046-002, PS-51191-002, PS-5251-001,
RPS-51191-007
Sales Drawing SD-5046-NA

This document was generated on 05/12/2010

PLEASE CHECK WWW.MOLEX.COM FOR LATEST PART INFORMATION

E

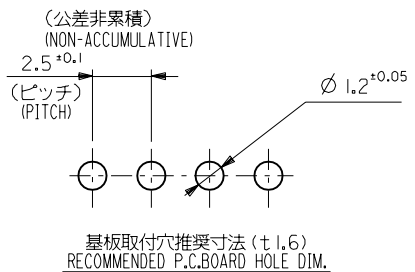
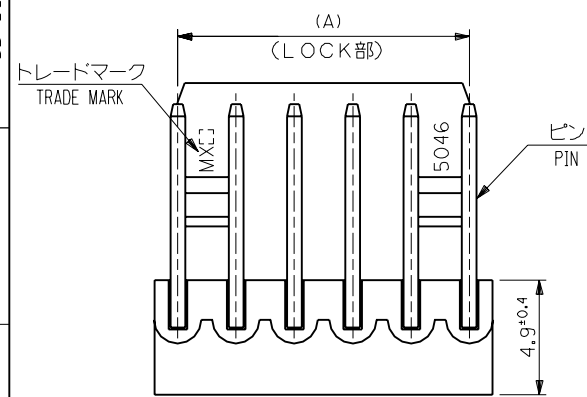
D

C

B

A

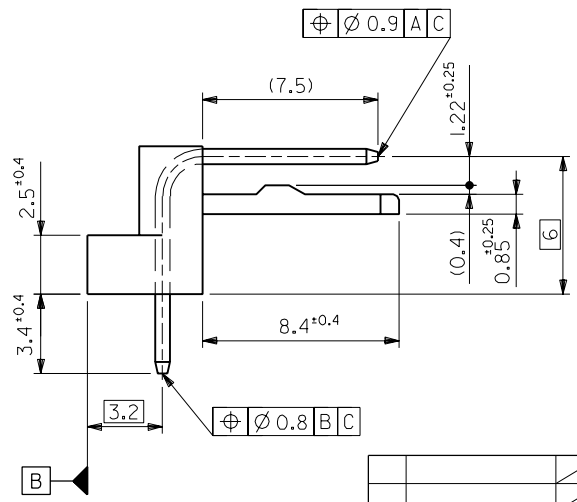
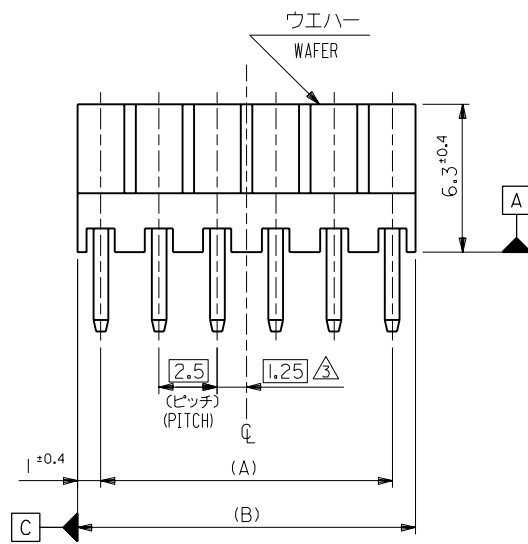
MM DIMENSIONS IN METRIC DO NOT SCALE DRAWING



注記
NOTES :

- それは長さ25.4に対して0.2MAX. CAMBER MUST BE WITHIN 0.2MAX. PER 25.4 .
 - 材料 (MATERIAL)
 ウエハー : 66ナイロン, UL94V-0
 WAFER: 66NYLON, UL94V-0
 ピン : φ0.635 黄銅, 銅下地錫メッキ
 PIN: φ0.635 BRASS, TIN OVER COPPER PLATING.
- △ 全極数が偶数の場合のみ適用。
 APPLY FOR EVEN CIRCUITS PRODUCT ONLY.

| | | | | |
|------|------|------------|----------|------------|
| 49.5 | 47.5 | 22-05-1202 | 5046-20A | 20 |
| 47 | 45 | -1192 | -19A | 19 |
| 44.5 | 42.5 | -1182 | -18A | 18 |
| 42 | 40 | -1172 | -17A | 17 |
| 39.5 | 37.5 | -1162 | -16A | 16 |
| 37 | 35 | -1152 | -15A | 15 |
| 34.5 | 32.5 | -1142 | -14A | 14 |
| 32 | 30 | -1132 | -13A | 13 |
| 29.5 | 27.5 | -1122 | -12A | 12 |
| 27 | 25 | -1112 | -11A | 11 |
| 24.5 | 22.5 | -1102 | -10A | 10 |
| 22 | 20 | -1092 | -09A | 9 |
| 19.5 | 17.5 | -1082 | -08A | 8 |
| 17 | 15 | -1072 | -07A | 7 |
| 14.5 | 12.5 | -1062 | -06A | 6 |
| 12 | 10 | -1052 | -05A | 5 |
| 9.5 | 7.5 | -1042 | -04A | 4 |
| 7 | 5 | -1032 | -03A | 3 |
| 4.5 | 2.5 | 22-05-1022 | 5046-02A | 2 |
| (B) | (A) | EDP NO. | ENG.NO. | 極数 CKT. |



| | | | | | | |
|-------------------------|-------|--------|--------------------------|----------|---------|-----|
| 角度 ANGLE | ±3° | | | | | |
| 30以上 OVER | +0.3 | | | | | |
| 10以上 30未満 UNDER | +0.25 | H | 変更 REVISD | (40895) | M.S | H.H |
| 10未満 UNDER | +0.2 | G | 変更及び再作図 REVISD & REDRAWN | (20018) | Y.M | H.H |
| 一般公差 GENERAL TOLERANCES | | 記号 LTR | 変更内容 REVISION RECORD | DR. CHK. | 日付 DATE | |

| | |
|-------------------|-------------------|
| 材料 MATERIAL | 注記参照 SEE NOTE |
| 仕上げ FINISH | --- |
| 適用電線範囲 WIRE RANGE | --- |
| 被覆外径 INS. RANGE | --- |
| DRAWN BY '94/11/3 | CHK'D BY '94/11/1 |
| Y.MIZUNO | Y.M.H.HIRAMOTO |
| APP'D BY '94/11/1 | 尺度 SCALE 5 : 1 |
| M.FUKUSHIMA | |

| | |
|-------------------------------------|-----|
| MOLEX-JAPAN CO.,LTD. 日本モレックス株式会社 | |
| REVISE ONLY ON CAD SYSTEM | |
| TITLE 名称 | |
| KK2.5 RIGHT ANGLE WAFER ASS'Y | |
| DWG. NO. | REV |
| SD-5046-NA | H |