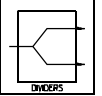


PD-30-150

0° POWER DIVIDER / COMBINER

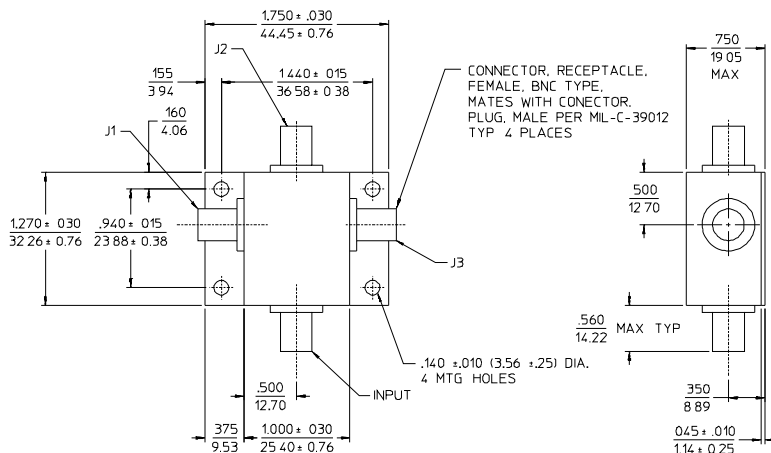
1 to 300 MHz / 3-Way / Broadband / Lumped Element Design / Low Insertion Loss / BNC Connectors



PRINCIPAL SPECIFICATIONS

Model Number	Frequency Range, MHz	Frequency Performance, MHz	Isolation, dB		Insertion Loss, dB		Phase Balance		Amplitude Bal., dB		VSWR (In/Output)	
			Min.	Typ.	Max.	Typ.	Max.	Typ.	Max.	Typ.	Max.	Typ.
PD-30-150	1 - 300	2 - 200	27	33	1.0	0.6	3°	1°	0.3	0.2	1.3:1	1.2:1
		1 - 300	20	25	1.2	0.8	4°	2°	0.4	0.2	1.5:1	1.3:1

Package Outline



- NOTES: 1. Tolerance on 3 place decimals ±.020(.51) except as noted.
2. Dimensions in inches over millimeters.

General Notes:

- The PD-30-150 3-way Power Divider/Combiner covers 1 to 300 MHz using a lumped element design for a broad bandwidth and high output port isolation.
- This unit complies with MIL-P-23971 and can be screened for compliance with additional specifications for military and space applications requiring the highest reliability.

16Feb96

GENERAL SPECIFICATIONS

- Coupling: - 4.8 dB nom.
- Impedance: 50 Ω nom.
- Internal Load Dissipation: 250 mW max.
- CW Input Power: 1 Watt max.
(When used as divider with 1.2:1 VSWR_{out})
- Weight, nominal: 2.5 oz. (71 g)
- BNC Female Connectors: MIL-C-39012
- Operating Temperature: - 55° to +85°C

Typical Performance

