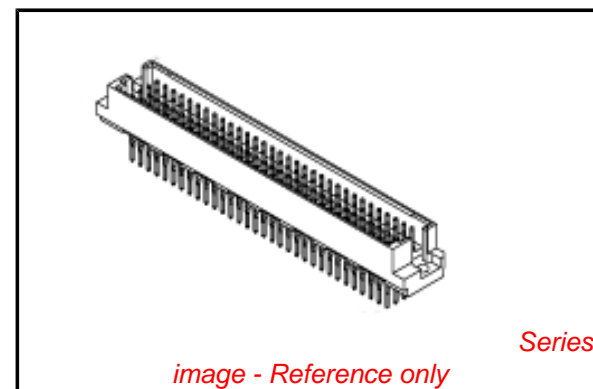


PLEASE CHECK WWW.MOLEX.COM FOR LATEST PART INFORMATION

Part Number: [0850159004](#)
Status: **Active**
Overview: [din_41612](#)
Description: 2.54mm (.100") Pitch DIN 41612 Header, 4-Row, Style R, Through Hole, Press-fit, Male, 0.6µm (24µ") Selective Gold (Au), First-Mate-Last-BreakPins, 128 Circuits, Lead Free

Documents:

[Drawing \(PDF\)](#) [RoHS Certificate of Compliance \(PDF\)](#)
[Product Specification PS-85013-0002 \(PDF\)](#)



General

Product Family	Backplane Connectors
Series	85052
Application	Backplane
Comments	"R" at Style Represents Vertical Male DIN Connectors
Component Type	PCB Header
Overview	din_41612
Product Name	IEC 603-2/DIN 41612
Style	R

Physical

Circuits (Loaded)	128
Circuits (maximum)	128
Circuits Detail	Standard Contacts at A:a4-a32, b4-b32, c4-c32, d4-d32 . First-Mate- Last-Break Contacts at Z: a1-a3, b1-b3, c1-c3, d1-d3
Color - Resin	Gray
Durability (mating cycles max)	400
First Mate / Last Break	No
Guide to Mating Part	No
Keying to Mating Part	Yes
Material - Metal	Phosphor Bronze
Material - Plating Mating	Gold
Material - Plating Termination	Tin
Material - Resin	Polyester
Number of Columns	32
Number of Pairs	Open Pin Field
Number of Rows	4
Orientation	Vertical
PC Tail Length (in)	0.228 In
PC Tail Length (mm)	5.80 mm
PCB Locator	No
PCB Retention	N/A
PCB Thickness Recommended (in)	0.063 In, 0.157 In
PCB Thickness Recommended (mm)	1.60 mm, 4.00 mm
Packaging Type	Carton
Pitch - Mating Interface (in)	0.100 In
Pitch - Mating Interface (mm)	2.54 mm
Pitch - Term. Interface (in)	0.100 In
Pitch - Term. Interface (mm)	2.54 mm
Plating min: Mating (µin)	24
Plating min: Mating (µm)	0.6
Plating min: Termination (µin)	16
Plating min: Termination (µm)	0.4
Polarized to PCB	No

EU RoHS

ELV and RoHS Compliant
REACH SVHC
 Not Reviewed
Halogen-Free Status
 Not Reviewed

China RoHS



Need more information on product environmental compliance?

Email productcompliance@molex.com
 For a multiple part number RoHS Certificate of Compliance, [click here](#)

Please visit the [Contact Us](#) section for any non-product compliance questions.

Search Parts in this Series

[85052Series](#)

Mates With

[85042](#) DIN 41612 Receptacle . [85052](#) DIN 41612 Header

Use With

[85089-1081](#) Press-in Tool

Stackable	No
Surface Mount Compatible (SMC)	No
Temperature Range - Operating	-55°C to +125°C
Termination Interface: Style	Through Hole - Compliant Pin

Electrical

Current - Maximum per Contact	1A
Data Rate	622.0 Mbps
Real Signals (per 25mm)	39
Shielded	No
Voltage - Maximum	250V AC (RMS)

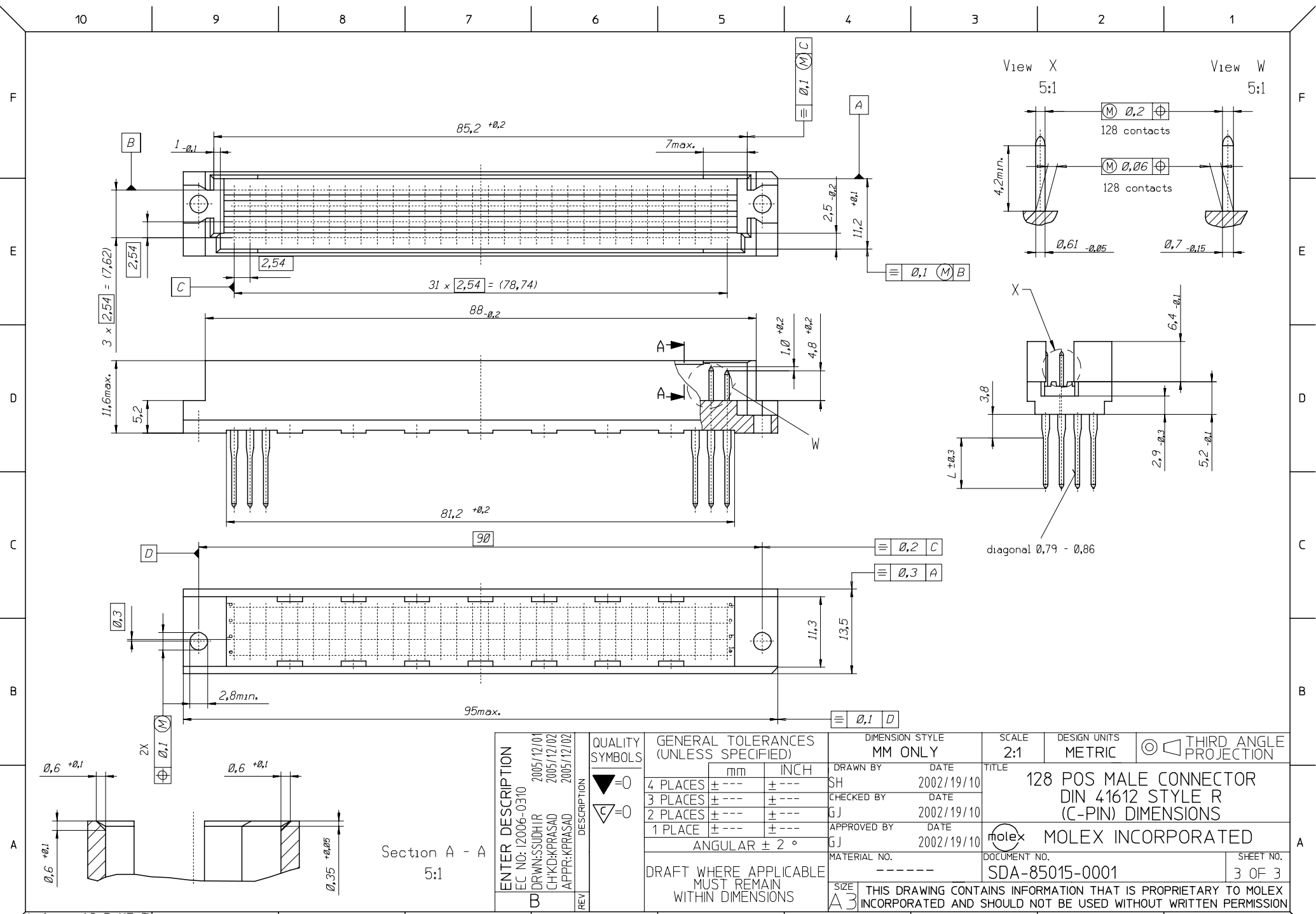
Material Info

Reference - Drawing Numbers

Packaging Specification	PK-85015-001
Product Specification	PS-85013-0002
Sales Drawing	SDA-85015-0001, SDA-85015-9004

This document was generated on 05/17/2010

PLEASE CHECK WWW.MOLEX.COM FOR LATEST PART INFORMATION



REV	DESCRIPTION
B	ENTER DESCRIPTION
	EC NO: I2006-0310
	DRWN: SUDHIR 2005/12/01
	CHKD: KPRASAD 2005/12/02
	APPR: KPRASAD 2005/12/02

QUALITY SYMBOLS	DESCRIPTION
▽=0	
△=0	

GENERAL TOLERANCES (UNLESS SPECIFIED)	
mm	INCH
4 PLACES ± ---	± ---
3 PLACES ± ---	± ---
2 PLACES ± ---	± ---
1 PLACE ± ---	± ---
ANGULAR ± 2 °	

DIMENSION STYLE		SCALE	DESIGN UNITS	THIRD ANGLE PROJECTION
MM ONLY		2:1	METRIC	☉
DRAWN BY	DATE	TITLE		
SH	2002/19/10	128 POS MALE CONNECTOR DIN 41612 STYLE R (C-PIN) DIMENSIONS		
CHECKED BY	DATE	MOLEX MOLEX INCORPORATED		
GJ	2002/19/10			
APPROVED BY	DATE	DOCUMENT NO.		
GJ	2002/19/10	SDA-85015-0001		
MATERIAL NO.		SHEET NO.		
-----		3 OF 3		
DRAFT WHERE APPLICABLE MUST REMAIN WITHIN DIMENSIONS				
THIS DRAWING CONTAINS INFORMATION THAT IS PROPRIETARY TO MOLEX INCORPORATED AND SHOULD NOT BE USED WITHOUT WRITTEN PERMISSION				

