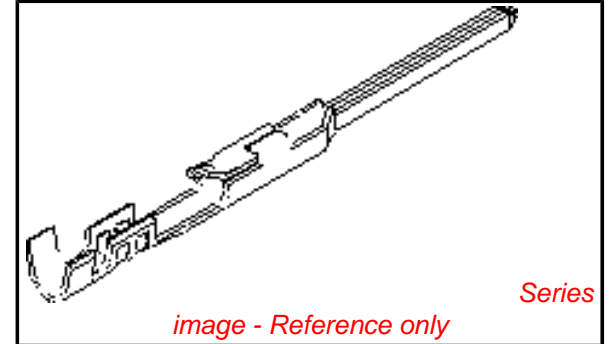


PLEASE CHECK WWW.MOLEX.COM FOR LATEST PART INFORMATION

Part Number: [0016020114](#)
Status: **Active**
Overview: [cgrid_sl_products](#)
Description: SL™ Crimp Terminal, Series 70021, Male, with Tin (Sn) Plated Contact, 22-24 AWG, Bag

Documents:

[Drawing \(PDF\)](#) [RoHS Certificate of Compliance \(PDF\)](#)
[Product Specification PS-70021 \(PDF\)](#)



General

Product Family Crimp Terminals
 Series [70021](#)
 Crimp Quality Equipment Yes
 Overview [cgrid_sl_products](#)
 Product Name SL™

Physical

Gender Male
 Material - Metal Phosphor Bronze
 Material - Plating Mating Tin
 Material - Plating Termination Tin
 Packaging Type Bag
 Plating min: Mating (µin) 150
 Plating min: Mating (µm) 3.75
 Plating min: Termination (µin) 75
 Plating min: Termination (µm) 1.875
 Termination Interface: Style Crimp or Compression
 Wire Insulation Diameter 1.63mm (.064") max.
 Wire Size AWG 22, 24
 Wire Size mm² N/A

Material Info

Old Part Number 70021-0221

Reference - Drawing Numbers

Packaging Specification PK-70873-0822
 Product Specification PS-70021
 Sales Drawing SD-70021-0*04_0*21, SD-70021-0221

EU RoHS
ELV and RoHS Compliant
REACH SVHC
Contains SVHC: No
Halogen-Free Status
Halogen-Free

China RoHS

Need more information on product environmental compliance?

Email productcompliance@molex.com
 For a multiple part number RoHS Certificate of Compliance, [click here](#)

Please visit the [Contact Us](#) section for any non-product compliance questions.

Search Parts in this Series

[70021Series](#)

Use With

[70066 Housing](#), [70107 Housing](#)

Application Tooling | [FAQ](#)

Tooling specifications and manuals are found by selecting the products below. Crimp Height Specifications are then contained in the Application Tooling Specification document.

Global

Description	Product #
Hand Crimp Tool	0638118700
Insertion Tool	0011020022
Extraction Tool	0011030036

Japan

Description	Product #
Hand Crimp Tool	0570365000
Hand Crimp Tool	0570375000

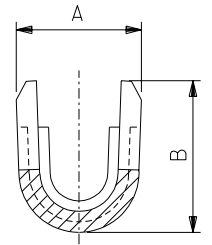
PLEASE CHECK WWW.MOLEX.COM FOR LATEST PART INFORMATION

DIMENSIONS IN METRIC DO NOT SCALE DRAWING

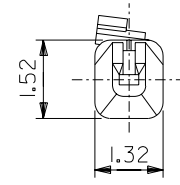
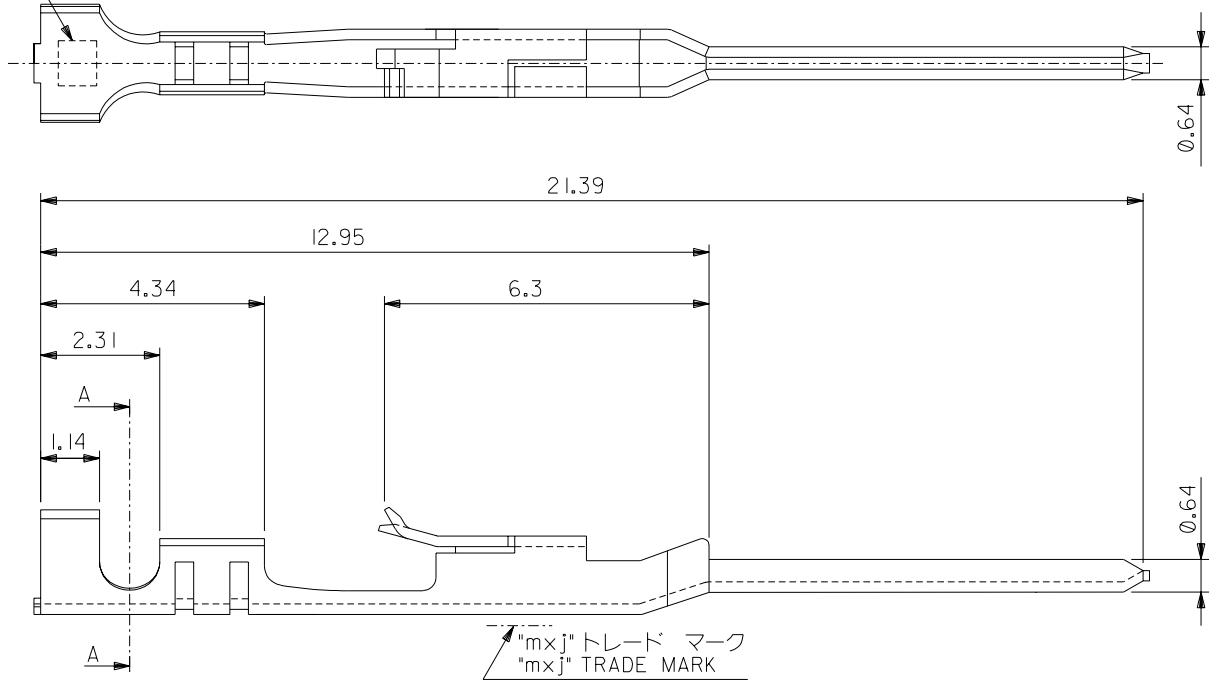
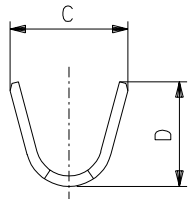
ENG. NO. 0*04
SD-70021-0*21

EDP NO. #

適用電線表示
CRIMP SIZE CODE LETTER



断面 A-A
SECTION A-A
(SCALE:20-1)



注記:
NOTES:

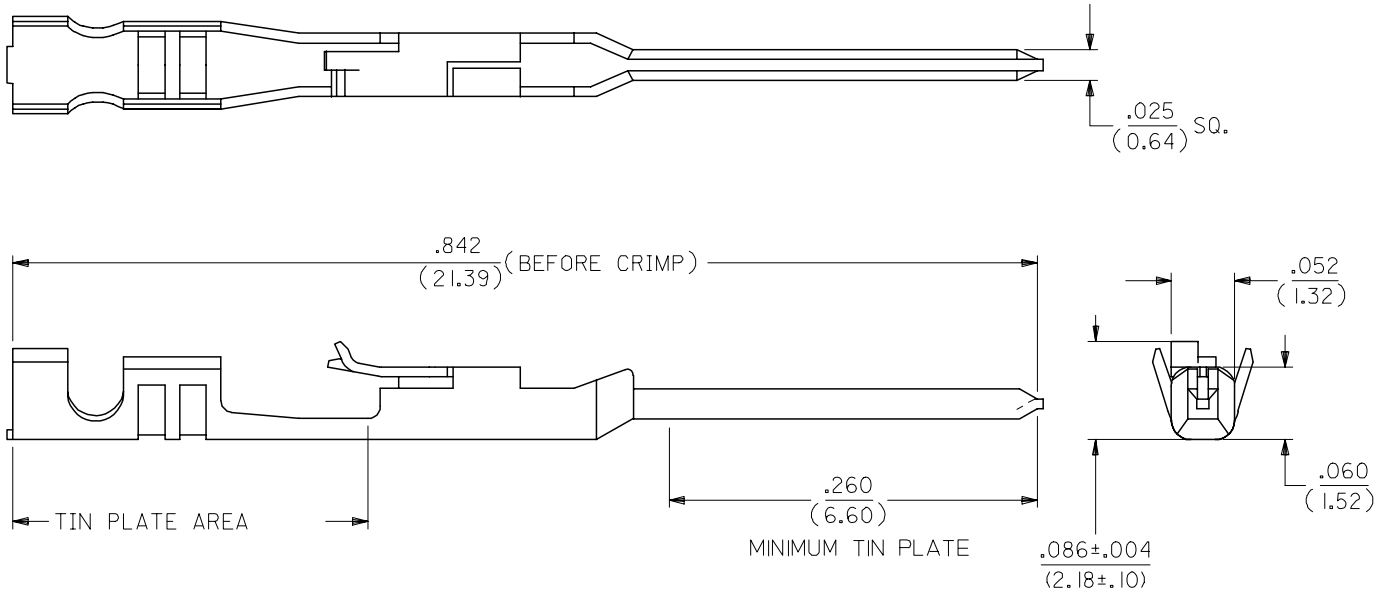
- 適合ハウジング: 70066-****, 70107-****
APPLICABLE HOUSING: 70066-****, 70107-****
- 仕上げ ニッケル下地、錫メッキ
FINISH TIN OVER NICKEL PLATING

1.91	2.1	1.47	1.22	A	適用電線表示 CRIMP SIZE CODE LETTER	被覆外径 INS. RANGE	適用電線範囲 WIRE RANGE	バラ状 LOOSE	70021-0204
1.91	2.1	1.65	1.84	C				AWG#24-#30	連鎖状 CHAIN
D	C	B	A					バラ状 LOOSE	70021-0221
								連鎖状 CHAIN	70021-0021
								端子形状 FORM	MATERIAL No.
材料 MATERIAL								燐青銅 PHOSPHOR BRONZE	
								t 0.203	
仕上げ FINISH								注記参照 SEE NOTES	
適用電線範囲 WIRE RANGE								表参照 SEE CHART	
被覆外径 INS. RANGE								表参照 SEE CHART	
DRAWN BY A. Mitake								CHK'D BY A.A.	
APP'D BY S. Yamada								M. Kuro	
REVISION RECORD								TITLE 名称 SL MALE CRIMP TERMINAL -LEAD FREE-	
REVISION RECORD								尺度 SCALE 10-1	

角度 ANGLE	+3°	B	変更 REVISED (J2004-4519)	Y.W.	M.S.	04/05/31
30以上 OVER	+0.3	A	変更 REVISED (T20159)	H.I.	H.I.	19/5/20
10以上 OVER	+0.25	0	新規作成 RELEASED (T00110)	Y.W.	M.S.	19/4/6
10未満 UNDER	+0.2	記号 LTR	変更内容 REVISION RECORD	DR. CHK.	日付 DATE	
一般公差 GENERAL TOLERANCES		REVISE ONLY ON CAD SYSTEM				

THIS DRAWING CONTAINS INFORMATION THAT IS PROPRIETARY TO MOLEX(JAPAN) AND SHOULD NOT BE USED WITHOUT WRITTEN PERMISSION
本図面は日本モレックス(株)の所有する情報を含むもので 当社の許可なく複製を禁止する。

10 9 8 7 6 5 4 3 2 1



NOTES:

1. TERMINAL FOR USE WITH HOUSING PART NO. 70066-**** & 70107-****.
2. MATERIAL: .008/(0.20) THK. PHOSPHOR BRONZE.
3. TERMINAL TO BE USED WITH 22-24 AWG STRANDED WIRE WITH .064 DIA. MAX. INSULATION.
4. REFER TO MOLEX OPERATIONAL AND SERVICE MANUAL FOR DETAILS.
5. REFER TO PRODUCT SPECIFICATION NO. PSX70021.
6. PARTS SUPPLIED LOOSE PER DRAWING PK-70873-0822.

*THE PRIMARY SHIPPING CARTON WILL BE LABELED "COMPLIANT TO RoHS DIRECTIVE 2002/95/EC AND ELV ANNEX II OF DIRECTIVE 2000/53/EC". CARTONS WITHOUT THIS LABEL MAY CONTAIN PRODUCT WITH LEAD.

PLATING:

.000150 MIN. TIN PLATE OVER NICKEL PLATE.

MODIFY PLATE CALLOUT EC NO: UCP2006-2279 DRWN:MSIBARRA 2006/04/04 CHKD:DMORGAN 2006/04/04 APPR:SMILLER 2006/04/04	QUALITY SYMBOLS	GENERAL TOLERANCES (UNLESS SPECIFIED)	DIMENSION STYLE IN/MM	SCALE 10:1	DESIGN UNITS INCH	THIRD ANGLE PROJECTION																											
	▽=0 ▽=0	<table border="1"> <thead> <tr> <th></th> <th>mm</th> <th>INCH</th> </tr> </thead> <tbody> <tr> <td>4 PLACES</td> <td>± ---</td> <td>± ---</td> </tr> <tr> <td>3 PLACES</td> <td>± ---</td> <td>± .010</td> </tr> <tr> <td>2 PLACES</td> <td>± 0.25</td> <td>± .015</td> </tr> <tr> <td>1 PLACE</td> <td>± 0.35</td> <td>± ---</td> </tr> </tbody> </table>		mm	INCH	4 PLACES	± ---	± ---	3 PLACES	± ---	± .010	2 PLACES	± 0.25	± .015	1 PLACE	± 0.35	± ---	<table border="1"> <thead> <tr> <th>DRAWN BY</th> <th>DATE</th> </tr> </thead> <tbody> <tr> <td>WJF</td> <td>1986/10/30</td> </tr> <tr> <th>CHECKED BY</th> <th>DATE</th> </tr> <tr> <td>MJM</td> <td>1986/10/30</td> </tr> <tr> <th>APPROVED BY</th> <th>DATE</th> </tr> <tr> <td>WAZ</td> <td>1986/10/30</td> </tr> </tbody> </table>	DRAWN BY	DATE	WJF	1986/10/30	CHECKED BY	DATE	MJM	1986/10/30	APPROVED BY	DATE	WAZ	1986/10/30	TITLE	TERMINAL, MALE CRIMP	
		mm	INCH																														
	4 PLACES	± ---	± ---																														
3 PLACES	± ---	± .010																															
2 PLACES	± 0.25	± .015																															
1 PLACE	± 0.35	± ---																															
DRAWN BY	DATE																																
WJF	1986/10/30																																
CHECKED BY	DATE																																
MJM	1986/10/30																																
APPROVED BY	DATE																																
WAZ	1986/10/30																																
DRAFT WHERE APPLICABLE MUST REMAIN WITHIN DIMENSIONS	MATERIAL NO. 16-02-0114	DOCUMENT NO. SD-70021-0221	MOLEX INCORPORATED		SHEET NO. 1 OF 1																												
THIS DRAWING CONTAINS INFORMATION THAT IS PROPRIETARY TO MOLEX INCORPORATED AND SHOULD NOT BE USED WITHOUT WRITTEN PERMISSION																																	

9 8 7 6 5 4 3 2 1