

PLEASE CHECK WWW.MOLEX.COM FOR LATEST PART INFORMATION

Part Number: [0355470400](#)
Status: **Active**
Description: 6.35mm (.250") Tab Multiple Wire-to-Wire Male Housing, 4 Circuits

Documents:

[Drawing \(PDF\)](#) [Product Specification PS-35546-002 \(PDF\)](#)
[Product Specification PS-35546-001 \(PDF\)](#) [RoHS Certificate of Compliance \(PDF\)](#)

General

Product Family Crimp Housings
 Series [35547](#)
 Product Name N/A

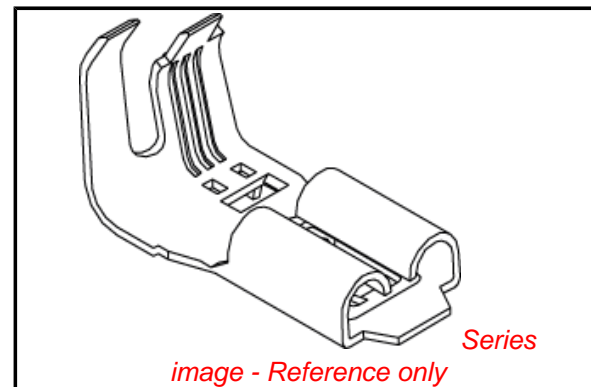
Physical

Circuits (maximum) 4
 Gender Male
 Glow-Wire Compliant No
 Number of Rows 2
 Packaging Type Bag
 Panel Mount Yes
 Pitch - Mating Interface (in) 0.425 In
 Pitch - Mating Interface (mm) 10.80 mm
 Temperature Range - Operating -40°C to +120°C

Material Info

Reference - Drawing Numbers

Product Specification PS-35546-001, PS-35546-002
 Sales Drawing SD-35547-002



EU RoHS

**ELV and RoHS
Compliant**
REACH SVHC
 Not Reviewed
**Halogen-Free
Status**
Not Reviewed

China RoHS



**Need more information on product
environmental compliance?**

Email productcompliance@molex.com
 For a multiple part number RoHS Certificate of Compliance, [click here](#)

Please visit the [Contact Us](#) section for any non-product compliance questions.

Search Parts in this Series

[35547Series](#)

Mates With

[35546](#)

Use With

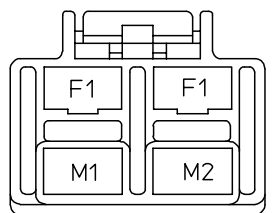
[35725](#) , [35452](#) , [35453](#)

DWG. NO. SD-35547-002
 SIMILAR ITEM
 PROJECT NO.
 C
 B
 DO NOT SCALE DRAWING DIMENSION IN METRIC

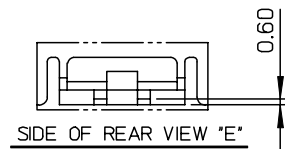
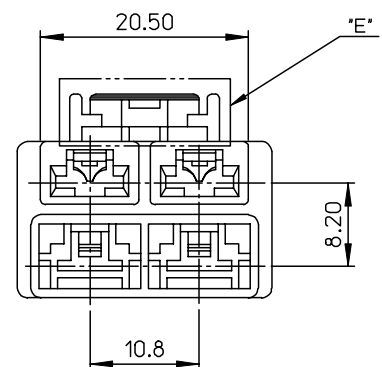
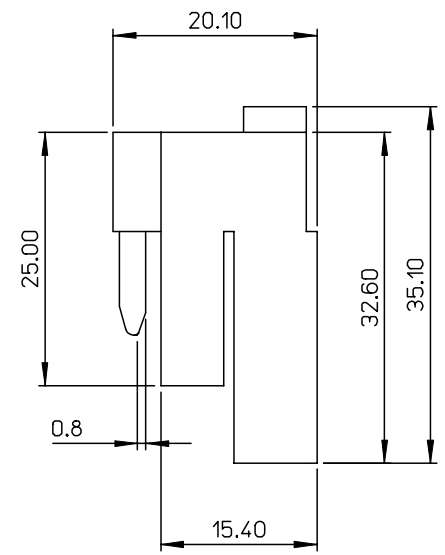
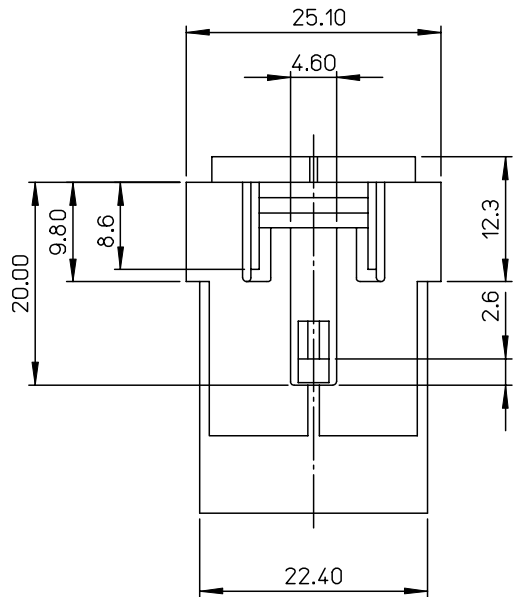
8 7 6 5 4 3 2 1

F
 E
 D
 C
 B
 A

TERMINAL PATTERN



F1 TERMINAL : 35725-5*10
 M1 TERMINAL : 35453-9*02
 M2 TERMINAL : 35452-9*02
 F = FEMALE TERMINAL
 M = MALE TERMINAL



NOTES

- MATERIAL : POLYESTER, UL94V-0, UNFILLED
- COLOR : WHITE(NATURAL) COLOR
- MATED HOUSING : 35546-0400/0700
- APPLICABLE TERMINAL : 35725-5*10
35452-9*02
35453-9*02

REVISED	ECN NO. KOR2007-0147 DRWN: J.B.JIN 07/005/21 CHK: W.Y.YANG APPR: E.H.JUNG	DESCRIPTION	QUALITY SYMBOLS	GENERAL TOLERANCES: (UNLESS SPECIFIED)		SCALE	DESIGN UNITS	THIRD ANGLE PROJECTION	DIMENSIONS:		SHT	REV
			MAJOR ▼ = 0	mm	INCH	2:1	<input checked="" type="checkbox"/> mm <input type="checkbox"/> INCH		<input type="checkbox"/> mm <input type="checkbox"/> INCH	<input checked="" type="checkbox"/> mm ONLY	REVISE ON CAD ONLY	
			CRITICAL ▽ = 0	4 PLACES ±0.	±-	DRAWN BY & DATE W.Y.YANG 97/11/12	TITLE: .250 MULTI W/W CONNECTOR PLUG HOUSING-4P					
			3 PLACES ±0.	±-	CHECKED BY & DATE B.K.CHOI 97/11/12							
2 PLACES ±0.30	±-	APPROVED BY & DATE C.W.LEE 97/11/12	MOLEX INCORPORATED									
1 PLACE ±0.30	±-	CAD FILENAME S35547BB.MI				MATERIAL NO. 355470400	DRAWING NO. SD-35547-002	SHEET NO.				
B1	REV	DRAFT WHERE APPLICABLE MUST REMAIN WITHIN DIMENSIONS		THIS DRAWING CONTAINS INFORMATION THAT IS PROPRIETARY TO MOLEX INCORPORATED AND SHOULD NOT BE USED WITHOUT WRITTEN PERMISSION.				SIZE B				

8 7 6 5 4 3 2 1 KOREA MX-A3