

PLEASE CHECK WWW.MOLEX.COM FOR LATEST PART INFORMATION

Part Number: [0192030390](#)
Status: **Active**
Description: Krimptite™ Quick Disconnect, Female Steel 900 Degree F/383 Degree C, 14-16 AWG, Tab 6.35mm (.250")

Documents:

[Drawing \(PDF\)](#)

[RoHS Certificate of Compliance \(PDF\)](#)

General

Product Family	Quick Disconnects
Series	19203
Crimp Quality Equipment	Yes
Product Name	Krimptite™
Type	Quick Disconnect

Physical

Barrel Type	Closed
Gender	Male
Glow-Wire Compliant	No
Insulation	Nylon (PA)
Lock to Mating Part	None
Material - Metal	Steel
Material - Plating Mating	Nickel
Orientation	Straight
Packaging Type	Bag
Tab Thickness	0.80mm (.031")
Tab Width	7.70mm (.303")
Temperature Range - Operating	-65°C to +105°C
Wire Size AWG	14, 16

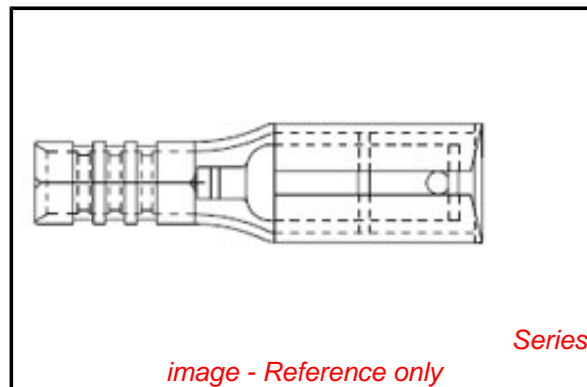
Electrical

Voltage - Maximum	N/A
-------------------	-----

Material Info

Reference - Drawing Numbers

Sales Drawing	SD-19203-025
---------------	--------------



EU RoHS

**ELV and RoHS
Compliant**
REACH SVHC
 Not Reviewed
**Halogen-Free
Status**
Not Reviewed

China RoHS



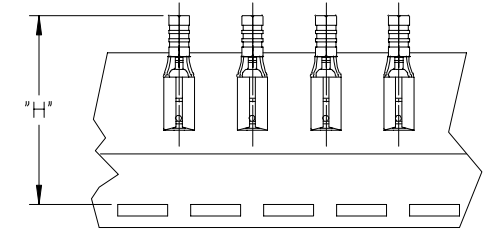
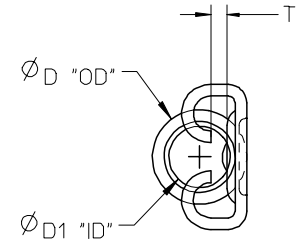
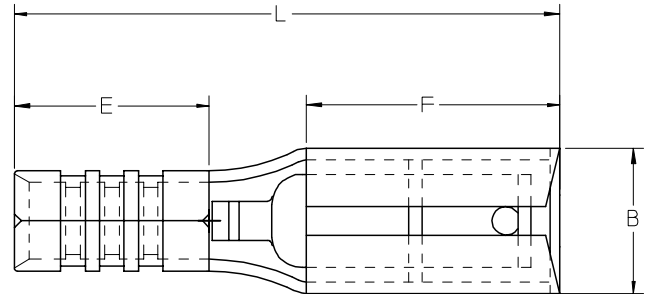
**Need more information on product
environmental compliance?**

Email productcompliance@molex.com
 For a multiple part number RoHS Certificate of
 Compliance, [click here](#)

Please visit the [Contact Us](#) section for any
 non-product compliance questions.

Search Parts in this Series
[19203Series](#)

MATERIAL NUMBER	ENGINEERING NUMBER	WIRE RANGE AWG	TAPED MATERIAL NUMBER	TAPED ENGINEERING NUMBER	T	B	F	L	E	D1	D	H
					MAX	MAX	MIN	MAX	MIN	MIN	MAX	NOMINAL
192030373	192030373	16-14	192030467	192030373T	.030/1.75	.239/6.06	.252/6.40	.587/14.92	.173/4.40	.083/2.10	.138/3.50	1.184/30.07
192030390	192030390	16-14	192030469	192030390T	.030/1.75	.302/7.66	.307/7.80	.666/16.92	.173/4.40	.083/2.10	.138/3.50	1.184/30.07
192030379	192030379	12-10	192030468	192030379T	.030/1.75	.302/7.66	.307/7.80	.706/17.92	.213/5.40	.130/3.30	.185/4.70	1.235/31.37



TAPE MOUNTING LOCATION

- NOTE(S):
1. MATERIAL: STEEL .016/0.40 THICK REF.
 2. FINISH: NICKEL PLATED
 3. PART IS ROHS COMPLIANT.
 4. AMBIENT OPERATING TEMPERATURE UP TO 900 °F (483 °C).

ADDED OPERATING TEMP	2007/03/13
EC NO: ETC2007-0297	2007/03/13
DRW: NEHLE	2007/03/13
CHKD: JMACNEIL	2007/03/13
APPR: JMACNEIL	2007/03/14

QUALITY SYMBOLS	DESCRIPTION
▽=0	
▽=0	

GENERAL TOLERANCES (UNLESS SPECIFIED)	
	INCH
4 PLACES	± .005
3 PLACES	± .004
2 PLACES	± .003
1 PLACE	± .002
ANGULAR ± .005°	
DRAFT WHERE APPLICABLE MUST REMAIN WITHIN DIMENSIONS	

DIMENSION STYLE	
IN/MM	
DRAWN BY	DATE
ASAYDEH	05/12/02
CHECKED BY	DATE
R DEROSS	05/12/02
APPROVED BY	DATE
R DEROSS	05/12/02
MATERIAL NO.	
SEE CHART	

SCALE	DESIGN UNITS	THIRD ANGLE PROJECTION
1:1	INCH	
TITLE		
KRIPTITE QUICK DISCONNECT, STEEL, 900 DEG F (483 DEG C)		
MOLEX INCORPORATED		
MATERIAL NO.	DOCUMENT NO.	SHEET NO.
SEE CHART	SD-19203-025	1 OF 1
THIS DRAWING CONTAINS INFORMATION THAT IS PROPRIETARY TO MOLEX INCORPORATED AND SHOULD NOT BE USED WITHOUT WRITTEN PERMISSION		