

PLEASE CHECK WWW.MOLEX.COM FOR LATEST PART INFORMATION

Part Number: [0009507131](#)
Status: **Active**
Overview: [kk](#)
Description: 3.96mm (.156") Pitch KK® Crimp Terminal Housing, 13 Circuits

Documents:

[3D Model](#) [Product Specification PS-08-50 \(PDF\)](#)
[Drawing \(PDF\)](#) [RoHS Certificate of Compliance \(PDF\)](#)

Agency Certification

CSA LR19980

General

Product Family Crimp Housings
 Series [2139](#)
 Overview [kk](#)
 Product Name KK®

Physical

Circuits (maximum) 13
 Color - Resin Natural
 Flammability 94V-2
 Gender Female
 Glow-Wire Compliant No
 Material - Resin Nylon
 Number of Rows 1
 Packaging Type Bag
 Panel Mount No
 Pitch - Mating Interface (in) 0.156 In
 Pitch - Mating Interface (mm) 3.96 mm
 Temperature Range - Operating 0°C to +75°C

Material Info

Old Part Number 2139-13C

Reference - Drawing Numbers

Packaging Specification PK-2139-002
 Product Specification PS-08-50
 Sales Drawing SD-2139

EU RoHS

**ELV and RoHS
Compliant**

REACH SVHC

Not Reviewed

Halogen-Free

Status

Not Reviewed

China RoHS



**Need more information on product
environmental compliance?**

Email productcompliance@molex.com
 For a multiple part number RoHS Certificate of
 Compliance, [click here](#)

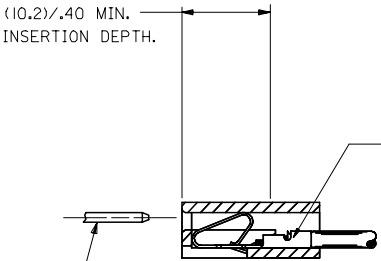
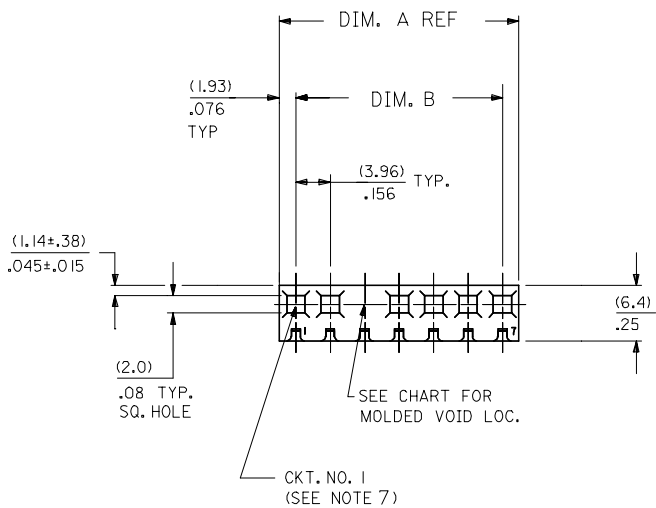
Please visit the [Contact Us](#) section for any
 non-product compliance questions.

Search Parts in this Series

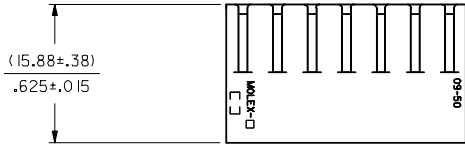
[2139Series](#)

Use With

[2478 Crimp Terminals for 18-24 AWG](#), [2578
Crimp Terminals for 22-26 AWG](#)



(1.14)±.045 SQ. OR ROUND PIN IS STANDARD. HOUSING WILL ACCEPT PIN SIZES FROM (.51)±.020 TO (1.57)±.062



OPTION CODE

| OPT. CODE | RAMP | POL. RIB | EARS | MATERIAL | ENGRAVING | PACKAGING |
|-----------|-----------|----------|------|---------------|-----------|---------------|
| A | STD. RAMP | NO | NO | NYLON 94V-2 | STD. | PK-2139-001 |
| C | NONE | NO | NO | NYLON 94V-2 | STD. | PK-2139-002 |
| G | WIDE RAMP | NO | NO | NYLON 94V-2 | STD. | PK-2139-001 |
| M | STD. RAMP | NO | NO | NYLON 6 94V-2 | STD. | TBD-INDIA |
| N | NONE | NO | NO | NYLON 6 94V-2 | STD. | TBD-INDIA |
| P | STD. RAMP | YES | NO | NYLON 94V-2 | STD. | TBD SINGAPORE |

NO. OF CKT'S. 2 139-N *** - *** - ***

SELECTIVE RAMP LOC.
 BLANK=NONE
 AA=1ST. SEL. LOC.
 AB=2ND. SEL. LOC., ETC.

VOID CODE
 NO. CORRESPONDS TO CKT. NO. VOIDED.
 MULT. VOIDS START WITH 51.

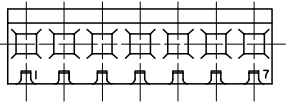
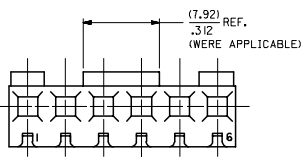
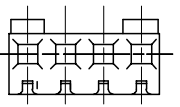
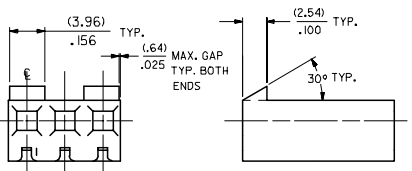
COLOR CODE
 BLANK=NATURAL
 GN=GREEN
 YW=YELLOW
 RD=RED
 OR=ORNANGE
 BU=BLUE
 BK=BLACK

SEE NOTE 6

| DIM. A | DIM. B | NO. OF |
|---------|-------------|--------|
| (7.82) | (3.96±.13) | 2 |
| .308 | .156±.005 | |
| (11.79) | (7.92±.13) | 3 |
| .464 | .312±.005 | |
| (15.75) | (11.89±.13) | 4 |
| .620 | .468±.005 | |
| (19.71) | (15.85±.13) | 5 |
| .776 | .624±.005 | |
| (23.67) | (19.81±.13) | 6 |
| .932 | .780±.005 | |
| (27.64) | (23.77±.13) | 7 |
| 1.088 | .936±.005 | |
| (31.60) | (27.74±.25) | 8 |
| 1.244 | 1.092±.010 | |
| (35.56) | (31.70±.25) | 9 |
| 1.400 | 1.248±.010 | |
| (39.52) | (35.66±.25) | 10 |
| 1.556 | 1.404±.010 | |
| (43.48) | (39.62±.25) | 11 |
| 1.712 | 1.560±.010 | |
| (47.45) | (43.59±.25) | 12 |
| 1.868 | 1.716±.010 | |
| (51.41) | (47.55±.31) | 13 |
| 2.024 | 1.872±.012 | |
| (55.37) | (51.51±.36) | 14 |
| 2.180 | 2.028±.014 | |
| (59.33) | (55.47±.36) | 15 |
| 2.336 | 2.184±.014 | |
| (63.30) | (59.44±.36) | 16 |
| 2.492 | 2.340±.014 | |
| (67.26) | (63.40±.36) | 17 |
| 2.648 | 2.496±.014 | |
| (71.22) | (67.36±.36) | 18 |
| 2.804 | 2.652±.014 | |
| (75.18) | (71.32±.36) | 19 |
| 2.960 | 2.808±.014 | |
| (79.15) | (75.29±.36) | 20 |
| 3.116 | 2.964±.014 | |
| (83.11) | (79.25±.46) | 21 |
| 3.272 | 3.120±.018 | |
| (87.07) | (83.21±.46) | 22 |
| 3.428 | 3.276±.018 | |
| (91.03) | (87.17±.46) | 23 |
| 3.584 | 3.432±.018 | |
| (95.00) | (91.14±.46) | 24 |
| 3.740 | 3.588±.018 | |

- NOTES:
- MATERIAL: SEE LEGEND.
 - FINISH: N/A
 - PARTS CONFORM TO PRODUCT SPECIFICATION PS-08-50.
 - PACKAGING INFORMATION: SEE LEGEND
 - THIS HOUSING FOR USE WITH TERMINAL NO. 2478 (18 TO 24 GA) & 2578 (22 TO 26 GA), WITH (2.54)±.100 MAX. INSULATION DIA. HOUSING 41695 IS RECOMMENDED FOR OVER (2.54)±.100 DIA. INSULATION.
 - DIMENSIONS GIVEN ACROSS CENTERLINES ARE SYMMETRICAL ABOUT THOSE CENTERLINES WITHIN HALF THE TOTAL TOLERANCE.
 - FIRST CKT. NO. ON 1 THRU 5 CKT. HOUSINGS, FIRST AND LAST CKT. NO. ON 6 CKT HOUSING AND LARGER.
 - MAX BOW .005 MM/MM OR .005 IN/IN
 - 2139-NP-# IS MANUFACTURED IN SINGAPORE ONLY.

| | | | | | | |
|---|-------------------------------|--|--|--|---|---------------------|
| UPDATE PER ECN EC NO: UCP2006-0451 2005/11/09 DRAWN: JUNE 2005/12/12 CHECKED: JUNE 2005/12/12 APPROVED: JUNE 2005/12/12 APPROVAL: JUNE 2005/12/12 | QUALITY SYMBOLS ▽=0 ▽=0 | GENERAL TOLERANCES (UNLESS SPECIFIED) mm INCH 2 PLACES ±.--- ±.--- 3 PLACES ±.--- ±.010 2 PLACES ±0.25 ±.014 1 PLACE ±0.36 ±.--- ANGULAR ±1/2° | DIMENSION STYLE MM/IN DRAWN BY DATE SAMIEC 1986/01/17 CHECKED BY DATE PATEL 1986/01/17 APPROVED BY DATE LENZ 1986/01/07 | SCALE --- DESIGN UNITS INCH THIRD ANGLE PROJECTION | TITLE CONNECTOR HOUSING .156 CL CRIMP TERMINAL 2139 SERIES DWG. MOLEX INCORPORATED | SHEET NO. 1 OF 4 |
| | | DRAFT WHERE APPLICABLE MUST REMAIN WITHIN DIMENSIONS | MATERIAL NO. SEE CHART | DOCUMENT NO. SD-2139 | THIS DRAWING CONTAINS INFORMATION THAT IS PROPRIETARY TO MOLEX INCORPORATED AND SHOULD NOT BE USED WITHOUT WRITTEN PERMISSION | |



| NO. OF CKT'S. | STANDARD RAMP IS LOCATED ON % OF CKT. NOS. |
|---------------|--|
| 2 | ACROSS ENTIRE PART |
| 3 | 1,3 |
| 4 | 1,4 |
| 5 | 1,3,5 |
| 6 | 1,3,4,6 |
| 7 | ACROSS ENTIRE PART |
| 8 | 1,3,6,8 |
| 9 | ACROSS ENTIRE PART |
| 10 | 1,3,5,6,8,10 |
| 11 | ACROSS ENTIRE PART |
| 12 | 1,3,5,8,10,12 |
| 13 | 1,3,5,7,9,11,13 |
| 14 | 1,3,5,7,8,10,12,14 |
| 15 | 1,3,5,7,9,11,13,15 |
| 16 | 1,3,5,7,10,12,14,16 |
| 17 | 1,3,5,7,9,11,13,15,17 |
| 18 | 1,3,5,7,9,10,12,14,16,18 |
| 19 | 1,3,5,7,9,11,13,15,17,19 |
| 20 | 1,3,5,7,9,12,14,16,18,20 |
| 21 | 1,3,5,7,9,11,13,15,17,19,21 |
| 22 | 1,3,5,7,9,11,12,14,16,18,20,22 |
| 23 | 1,3,5,7,9,11,13,15,17,19,21,23 |
| 24 | 1,3,5,7,9,11,14,16,18,20,22,24 |

STD. RAMP OPTION
SEE CHART FOR RAMP LOCATIONS.

| 2139-NA-* | | | 2139-NC-* | | |
|------------|-------------|--------|--------------|-------------|--------|
| ORDER NO. | ENG. NO. | VOIDS | ORDER NO. | ENG. NO. | VOIDS |
| 09-50-3021 | 2139-2A | | 09-50-7021 | 2139-2C | |
| 09-50-3031 | 2139-3A | | 09-50-7031 | 2139-3C | |
| 09-50-3041 | 2139-4A | | 09-50-7041 | 2139-4C | |
| 09-50-3051 | 2139-5A | | 09-50-7051 | 2139-5C | |
| 09-50-3061 | 2139-6A | | 09-50-7061 | 2139-6C | |
| 09-50-3071 | 2139-7A | | 09-50-7071 | 2139-7C | |
| 09-50-3081 | 2139-8A | | 09-50-7081 | 2139-8C | |
| 09-50-3091 | 2139-9A | | 09-50-7091 | 2139-9C | |
| 09-50-3101 | 2139-10A | | 09-50-7101 | 2139-10C | |
| 09-50-3111 | 2139-11A | | 09-50-7111 | 2139-11C | |
| 09-50-3121 | 2139-12A | | 09-50-7121 | 2139-12C | |
| 09-50-3131 | 2139-13A | | 09-50-7131 | 2139-13C | |
| 09-50-3141 | 2139-14A | | 09-50-7141 | 2139-14C | |
| 09-50-3151 | 2139-15A | | 09-50-7151 | 2139-15C | |
| 09-50-3161 | 2139-16A | | 09-50-7161 | 2139-16C | |
| 09-50-3171 | 2139-17A | | 09-50-7171 | 2139-17C | |
| 09-50-3181 | 2139-18A | | 09-50-7181 | 2139-18C | |
| 09-50-3191 | 2139-19A | | 09-50-7191 | 2139-19C | |
| 09-50-3201 | 2139-20A | | 09-50-7201 | 2139-20C | |
| 09-50-3211 | 2139-21A | | 09-50-7211 | 2139-21C | |
| 09-50-3221 | 2139-22A | | 09-50-7221 | 2139-22C | |
| 09-50-3231 | 2139-23A | | 09-50-7231 | 2139-23C | |
| 09-50-3241 | 2139-24A | | 09-50-7241 | 2139-24C | |
| 09-50-3036 | 2139-3A-2 | 2 | 09-50-7117 | 2139-11C-51 | 2,7,10 |
| | 2139-10A-2 | 2 | 09-50-7166 | 2139-16C-2 | 2 |
| | 2139-10A-51 | 2,5 | 09-50-7106 | 2139-10C-2 | 2 |
| | 2139-7A-2 | 2 | 09-50-7107 | 2139-10C-51 | 2,5 |
| | 2139-11A-51 | 2,7,10 | 09-50-7076 | 2139-7C-2 | 2 |
| 09-50-3163 | 2139-16A-2 | 2 | | 2139-4C-3 | 3 |
| 09-50-3073 | 2139-10A-7 | 7 | T 09-50-7108 | 2139-10C-4 | 4 |
| 09-50-3083 | 2139-10A-8 | 8 | T 09-50-7109 | 2139-10C-5 | 5 |
| 09-50-3104 | 2139-10A-9 | 9 | | 2139-5C-2 | 2 |
| 09-50-3162 | 2139-16A-51 | 2,15 | 09-50-3077 | 2139-7C-3 | 3 |
| 09-50-3092 | 2139-9A-51 | 2,6 | 09-50-3078 | 2139-7C-5 | 5 |
| 09-50-3075 | 2139-7A-51 | 1,7 | 09-50-7142 | 2139-14C-5 | 5 |
| | 2139-7A-6 | 6 | | | |
| | 2139-5A-51 | 2,4 | | | |
| 09-50-3047 | 2139-4A-3 | 3 | | | |
| | 2139-11A-2 | 2 | | | |
| 09-50-3052 | 2139-5A-4 | 4 | | | |
| 09-50-3076 | 2139-7A-52 | 4,7 | | | |
| 09-50-3125 | 2139-12A-5 | 5 | | | |
| | 2139-7A-3 | 3 | | | |
| 09-50-3053 | 2139-7A-5 | 5 | | | |
| | 2139-5A-2 | 2 | | | |
| 09-50-3127 | 2139-12A-2 | 2 | | | |
| 09-50-3143 | 2139-14A-2 | 2 | | | |
| 09-50-3202 | 2139-20A-2 | 2 | | | |
| S | 2139-9A-4 | 4 | | | |
| 09-50-3126 | 2139-12A-11 | 11 | | | |
| 09-50-3142 | 2139-14A-13 | 13 | | | |
| 09-50-3084 | 2139-8A-4 | 4 | | | |
| 09-50-3037 | 2139-3A-3 | 3 | | | |
| 09-50-3182 | 2139-18A-2 | 2 | | | |
| 09-50-3157 | 2139-15A-2 | 2 | | | |

| | | | | | | |
|---|--------------------------------------|--|---------------------------|-------------------------|----------------------|------------------------|
| UPDATE TITLE BLOCK DEC NO: UCP2006-0451 DRAWN: JUNE 2005/17/09 CHECKED: JUNE 2005/17/12 APPROVED: JUNE 2005/17/14 AFT | QUALITY SYMBOLS ▽=0 ▽=0 | GENERAL TOLERANCES (UNLESS SPECIFIED) mm INCH 4 PLACES ± .010 ± .010 3 PLACES ± .025 ± .014 2 PLACES ± 0.36 ± .014 1 PLACE ± 0.36 ± .014 ANGULAR ±1/2° | DIMENSION STYLE MM/IN | SCALE --- | DESIGN UNITS INCH | THIRD ANGLE PROJECTION |
| | | DRAWN BY: SAMIEC DATE: 1986/01/17 CHECKED BY: PATEL DATE: 1986/01/17 APPROVED BY: LENZ DATE: 1986/01/17 | MATERIAL NO. SEE CHART | DOCUMENT NO. SD-2139 | SHEET NO. 2 OF 4 | |

CONNECTOR HOUSING FOR CRIMP TERMINAL 2139 SERIES DWG.
MOLEX INCORPORATED

DRAFT WHERE APPLICABLE MUST REMAIN WITHIN DIMENSIONS

THIS DRAWING CONTAINS INFORMATION THAT IS PROPRIETARY TO MOLEX INCORPORATED AND SHOULD NOT BE USED WITHOUT WRITTEN PERMISSION