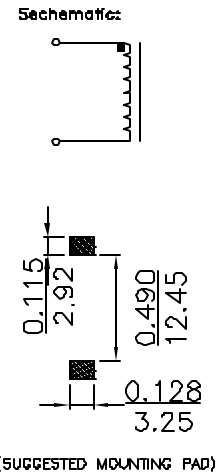
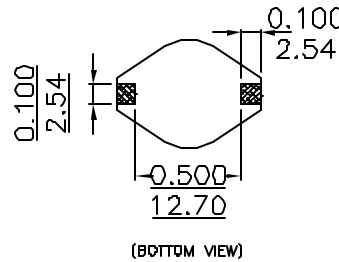
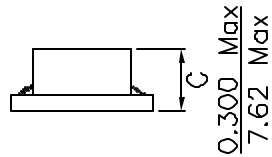
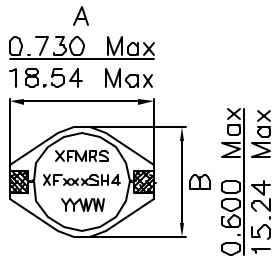


XFxxxSH4 SERIES INDUCTORS

- * True Surface Mount Design
- * Low Cost, Extremely High Quality Product
- * Tape & Reel Packaging Standard, 320 Pcs per 13" Reel
- * High Inductance, High Power Ratings For Your Laptop, Palmtop, Point of Power Application
- * Custom Versions Available At No Extra Charge

Mechanical Dimensions:



UNLESS OTHERWISE SPECIFIED
 TOLERANCES:
 .xxx ±0.010 INCH
 .xx ±0.25 mm
 Dimensions in INCH/mm

PART NUMBER	INDUCTANCE ¹ (uH ±20%)	DCR Max. (Ohms)	SRF Typ. (MHz)	ISAT ² (A)	IRMS ³ (A Rms)
XF103SH4	10	0.040	30	8.0	3.9
XF153SH4	15	0.048	20	7.0	3.4
XF223SH4	22	0.059	18	6.0	3.1
XF333SH4	33	0.075	14	5.0	2.8
XF473SH4	47	0.097	10	4.0	2.4
XF683SH4	68	0.138	9	3.0	2.0
XF104SH4	100	0.207	7	2.4	1.7
XF154SH4	150	0.293	6	2.1	1.3
XF224SH4	220	0.47	5	1.9	1.1
XF334SH4	330	0.78	4	1.1	0.86
XF474SH4	470	1.08	3	1.1	0.73
XF684SH4	680	1.40	2.5	0.96	0.64
XF105SH4	1000	2.01	2	0.80	0.53

1. Tested @ 100KHz, 0.1 Vrms.
2. Inductance drop=10% typ. at rated Isat.
3. ΔT=40°C rise typ. at Irms.
4. Operating temperature range -40°C to +85°C.
5. Electrical Specifications at 25°C.