

SMD INDUCTOR DR365-2 SERIES

Features

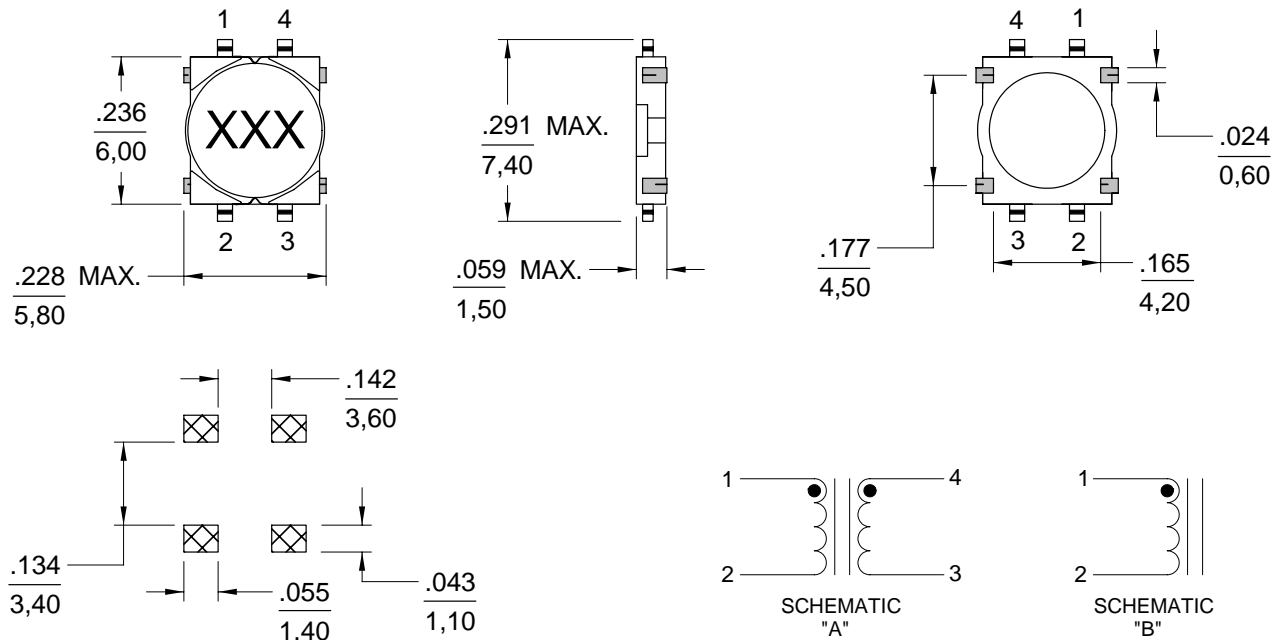
- Low Profile Surface Mount Design
- Inductance Range from 3.3 μH to 47.0 μH
- Materials meet UL94V-0
- Temperature Range -40°C to +85°C
- Tinned Leads with Leaded Solder is Available (note 4)



ELECTRICAL SPECIFICATION AT 25°C

Part Number	Inductance (μH) @ 100kHz, 0.1V	DCR (Ω) Max.	Rated DC Current (A) Max.	Schematic
DR365-2-332	3.3 \pm 20%	0.09	1.25	A
DR365-2-472	4.7 \pm 20%	0.11	1.20	A
DR365-2-682	6.8 \pm 20%	0.15	0.90	A
DR365-2-103	10.0 \pm 20%	0.19	0.85	A
DR365-2-153	15.0 \pm 20%	0.30	0.57	A
DR365-2-223	22.0 \pm 20%	0.44	0.54	B
DR365-2-333	33.0 \pm 20%	0.64	0.38	B
DR365-2-473	47.0 \pm 20%	0.88	0.35	B

MECHANICAL OUTLINES



SUGGESTED PAD LAYOUT

NOTES:

1. Dimensions are shown in inches/millimeters
Unless otherwise specified, tolerance = Inches: ± 0.010
= Millimeters: $\pm 0,25$
2. Inductance is approximately 10% lower @ rated DC current from initial value
3. Tape & Reel Packaging, 2000 pieces per reel.
4. For non-RoHS parts replace DR prefix with 42- (e.g. DR365-2 becomes 42-365-2)
5. Component lead plating typically is SN96AG4 (SN100 and SN99.3CU.7 can be used in accordance with J-STD-020C)