

PLEASE CHECK WWW.MOLEX.COM FOR LATEST PART INFORMATION

Part Number: [0026116145](#)
Status: **Active**
Overview: [kk](#)
Description: 3.96mm (.156") Pitch KK® PC Board Connector, Top Entry, Nylon Connector, 1.0µm (40µ") Tin (Sn), 14 Circuits

Documents:

[Drawing \(PDF\)](#) [RoHS Certificate of Compliance \(PDF\)](#)
[Product Specification PS-99020-0087 \(PDF\)](#)

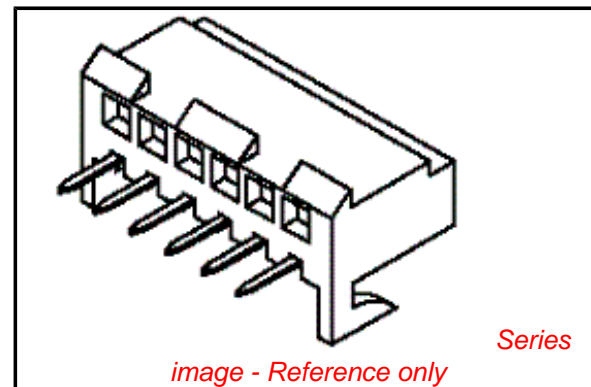
General

Product Family	PCB Receptacles
Series	3215
Application	Board-to-Board
Comments	Lock between 5&6 and 9&10 Circuit
Overview	kk
Product Name	KK®

Physical

Circuits (Loaded)	14
Circuits (maximum)	14
Color - Resin	Natural
Durability (mating cycles max)	25
Glow-Wire Compliant	No
Guide to Mating Part	No
Keying to Mating Part	Yes
Lock to Mating Part	Yes
Material - Metal	Phosphor Bronze
Material - Plating Mating	Tin
Material - Plating Termination	Tin
Material - Resin	Nylon
Number of Rows	1
Orientation	Vertical
PC Tail Length (in)	0.161 In
PC Tail Length (mm)	4.10 mm
PCB Locator	No
PCB Retention	None
PCB Thickness Recommended (in)	0.062 In
PCB Thickness Recommended (mm)	1.57 mm
Packaging Type	Bag
Pitch - Mating Interface (in)	0.156 In
Pitch - Mating Interface (mm)	3.96 mm
Pitch - Term. Interface (in)	0.156 In
Pitch - Term. Interface (mm)	3.96 mm
Plating min: Mating (µin)	40.00
Plating min: Mating (µm)	1.000
Plating min: Termination (µin)	40.00
Plating min: Termination (µm)	1.00
Polarized to Mating Part	Yes
Polarized to PCB	No
Stackable	No
Surface Mount Compatible (SMC)	No
Temperature Range - Operating	0°C to +50°C
Termination Interface: Style	Through Hole

Electrical



EU RoHS

ELV and RoHS Compliant
REACH SVHC
 Not Reviewed
Halogen-Free Status

China RoHS



Not Reviewed

Need more information on product environmental compliance?

Email productcompliance@molex.com
 For a multiple part number RoHS Certificate of Compliance, [click here](#)

Please visit the [Contact Us](#) section for any non-product compliance questions.

Search Parts in this Series

[3215Series](#)

Mates With

[03190](#) , [03192](#)

Current - Maximum per Contact	4.5A
Grounding to PCB	No
Voltage - Maximum	250V

Material Info

Old Part Number	3215HR14BB
-----------------	------------

Reference - Drawing Numbers

Product Specification	PS-99020-0087
Sales Drawing	SDAE-3215-**N**-**

This document was generated on 06/08/2010

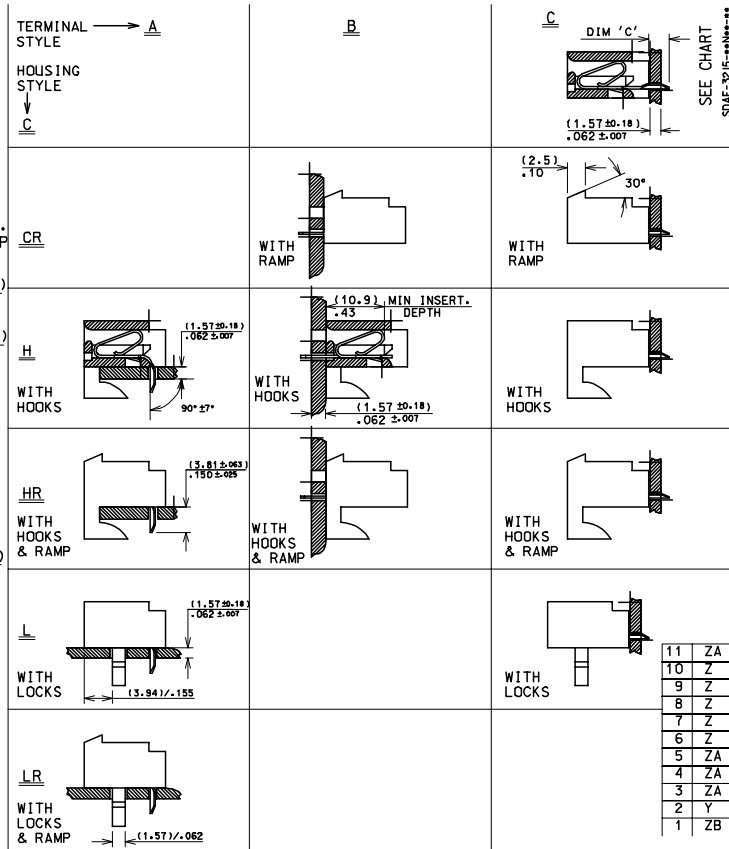
PLEASE CHECK WWW.MOLEX.COM FOR LATEST PART INFORMATION

20	(75.29±0.41) 2.964±.016	(79.15±0.51) 3.116±.020
19	(71.32±0.41) 2.808±.016	(75.18±0.51) 2.960±.020
18	(67.36±0.36) 2.652±.014	(71.22±0.46) 2.804±.018
17	(63.40±0.36) 2.496±.014	(67.26±0.46) 2.648±.018
16	(59.44±0.36) 2.340±.014	(63.29±0.46) 2.492±.018
15	(55.47±0.33) 2.184±.012	(59.33±0.41) 2.336±.016
14	(51.51±0.30) 2.028±.012	(55.37±0.41) 2.180±.016
13	(47.55±0.30) 1.872±.012	(51.41±0.41) 2.024±.016
12	(43.59±0.25) 1.716±.010	(47.45±0.36) 1.868±.014
11	(39.62±0.25) 1.560±.010	(43.48±0.36) 1.712±.014
10	(35.66±0.25) 1.404±.010	(39.52±0.31) 1.556±.012
9	(31.70±0.18) 1.248±.007	(35.56±0.3) 1.400±.012
8	(27.74±0.18) 1.092±.007	(31.60±0.31) 1.244±.012
7	(23.77±0.18) 0.936±.007	(27.64±0.3) 1.088±.012
6	(19.81±0.13) 0.780±.005	(23.67±0.25) 0.932±.011
5	(15.85±0.13) 0.624±.005	(19.71±0.25) 0.776±.010
4	(11.89±0.13) 0.468±.005	(15.75±0.25) 0.620±.010
3	(7.92±0.13) 0.312±.005	(11.79±0.25) 0.464±.010

IN VOID POS'N
NO TERMINAL SUPPLIED

NOTES:

1. THESE ASSEMBLIES STACKABLE END TO END ON (3.96)/.156 CENTRE TO CENTRE PROGRESSION.
2. FOR CHARTS & PANEL DRILLING DETAILS SEE SHEET 2 AND SUBSEQUENT SHEETS.
3. TERMINAL PULL OUT FORCE- 4lbs MIN.
4. TERMINALS ARE LUBRICATED WITH MXI-3.
5. CONNECTORS FOR USE WITH (1.14)/.045 SQ. OR RD. PINS
6. THIS PART CONFORMS TO PROD.SPEC.99020-0087



REVISION #P-DATE
E2004-0792
P-SHEAHAN 04/03/98

4 : 1 x
G. HART 24/11/82
M GOONEY 26/11/98
MWILHITE 26/11/98
SE32151 .DGN SEE CHART SDAE-3215-***N*** I 0F 11

11	ZA
10	Z
9	Z
8	Z
7	Z
6	Z
5	ZA
4	ZA
3	ZA
2	Y
1	ZB

ZB

SHT. 1 OF 1		MRI-SDAE-3215-***N***			
MODIFICATION RECORD INDEX					
ECN	ISS.	DATE	INIT.	SHTS. AFFECTED	DESCRIPTION OF MOD.
MESL-077	F	2 .12.82	GH	ALL	REDRAW
MEML-112	G	26.4 .83	GH	ALL	REVISION
MEML-594	H	6 .6 .83	GH	ALL	VARIOUS
MEML-608	J	21.6 .83	GH	ALL	VARIOUS
MEML-681	K	31.8 .83	MAL	ALL	VARIOUS
MEML-901	L	25.6 .84	MC	ALL	VARIOUS
MEML-382	M	2 .10.84	MC	ALL	VARIOUS
MEML-509	N	29.5 .85	MC	ALL	VARIOUS
MEML-510	P	31.5 .85	MC	ALL	VARIOUS
MEML-1162	R	25.11.85	JP	ALL	VARIOUS
MEML-617	S	9 .1.86	MC	ALL	VARIOUS
MEML-625	T	20.1.86	MC	ALL	VARIOUS
E10010	U	11.1.91	POB	ALL	VARIOUS
E10018	V	18.1.91	POB	ALL	VARIOUS
E50203	W	08.12.94	JS	ALL	VARIOUS
E90137	Y	1.11.98	TM	ALL	REDRAWN ON CAD
E2001-0463	Z	1.11.00	MF	1,3,4,5,6,7,8,9,10,11	UPDATED BORDER
E2003-0992	ZA	03.05.29	PS	1	NEW PROD.SPEC.99020-0087 ADDED
			REVISE ONLY ON CAD SYSTEM		
MOLEX EUROPE		CROQUIS FILENAME			
THIS DRAWING CONTAINS INFORMATION THAT IS PROPRIETARY TO MOLEX INC. A SHOULD NOT BE USED WITHOUT WRITTEN PERMISSION		MF0028	SE32151 . DGN	ISSUE	ZA

13		12		11		10		9		8		7		6		5		4		3		2		1					
PART No.	ENG No.	No. OF CCTS	LOCK RAMP	VOID CCT POS'N		PART No.	ENG No.	No. OF CCTS	LOCK RAMP	VOID CCT POS'N	CENTRE HOOK LOCATED BETWEEN CCT No's	PART No.	ENG No.	No. OF CCTS	LOCK RAMP	VOID CCT POS'N	CENTRE HOOK LOCATED BETWEEN CCT No's	PART No.	ENG No.	No. OF CCTS	LOCK RAMP	VOID CCT POS'N	CENTRE HOOK LOCATED BETWEEN CCT No's	PART No.	ENG No.	No. OF CCTS	LOCK RAMP	VOID CCT POS'N	CENTRE HOOK LOCATED BETWEEN CCT No's
26-11-6038	AE-3215-CR3BB	3	YES	NONE		26-11-6039	AE-3215-H3BB	3	NO	NONE	-----	26-11-6035	AE-3215-HR3BB	3	YES	NONE	-----	26-11-2031	AE-3215-C3AC	3	NO	NONE							
↑ -6048	↑ -CR4BB	4	↑	↑		↑ -6049	↑ -H4BB	4	↑	↑	-----	↑ -6045	↑ -HR4BB	4	↑	↑	-----	↑ -2041	↑ -C4AC	4	↑	↑							
-6058	-CR5BB	5				-6059	-H5BB	5			-----	-6055	-HR5BB	5			-----	-2051	-C5AC	5									
-6068	-CR6BB	6				-6069	-H6BB	6			-----	-6065	-HR6BB	6			-----	-2061	-C6AC	6									
-6078	-CR7BB	7				-6079	-H7BB	7			-----	-6075	-HR7BB	7			-----	-2071	-C7AC	7									
-6088	-CR8BB	8				-6089	-H8BB	8			4&5	-6085	-HR8BB	8			4&5	-2081	-C8AC	8									
-6098	-CR9BB	9				-6099	-H9BB	9			4&5	-6095	-HR9BB	9			4&5	-2091	-C9AC	9									
-6108	-CR10BB	10				-6109	-H10BB	10			5&6	-6105	-HR10BB	10			5&6	-2101	-C10AC	10									
-6118	-CR11BB	11				-6119	-H11BB	11			5&6	-6115	-HR11BB	11			5&6	-2111	-C11AC	11									
-6128	-CR12BB	12				-6129	-H12BB	12			4&5 8&9	-6125	-HR12BB	12			4&5 8&9	-2121	-C12AC	12									
-6138	-CR13BB	13				-6139	-H13BB	13			4&5 9&10	-6135	-HR13BB	13			4&5 9&10	-2131	-C13AC	13									
-6148	-CR14BB	14				-6149	-H14BB	14			5&6 9&10	-6145	-HR14BB	14			5&6 9&10	↓ -2141	-C14AC	14									
-6158	-CR15BB	15				-6159	-H15BB	15			5&6 10&11	-6155	-HR15BB	15			5&6 10&11	26-11-2151	-C15AC	15									
-6168	-CR16BB	16				-6169	-H16BB	16			6&7 11&12	-6165	-HR16BB	16			6&7 11&12	NOT TOOLED	-C16AC	16									
-6178	-CR17BB	17				-6179	-H17BB	17			6&7 11&12	-6175	-HR17BB	17			6&7 11&12	↑	-C17AC	17									
-6188	-CR18BB	18				-6189	-H18BB	18			6&7 10&11 15&16	-6185	-HR18BB	18			6&7 10&11 15&16	↑	-C18AC	18									
-6198	-CR19BB	19				-6199	-H19BB	19			5&6 10&11 15&16	-6195	-HR19BB	19			5&6 10&11 15&16	↓	-C19AC	19									
26-11-6208	AE-3215-CR20BB	20	YES	NONE		26-11-6209	AE-3215-H20BB	20	NO	NONE	5&6 10&11 15&16	26-11-6205	AE-3215-HR20BB	20	YES	NONE	5&6 10&11 15&16	NOT TOOLED	AE-3215-C20AC	20	NO	NONE							
												38-00-0545	AE-3215-HR17BB-51	17	YES	3,6,9 12,15	6&7 11&12												
												38-00-0546	AE-3215-HR8BB-51	8	YES	3,6	4&5												

SEE CHART
SDAE-3215-***N***

HOUSING.
STYLE- CR

TERMINAL.
STYLE- B

DRILLING DETAIL 'B'
(SEE SHEET 2)

HOUSING.
STYLE- H

TERMINAL.
STYLE- B

DRILLING DETAIL 'B'

HOUSING.
STYLE- HR

TERMINAL.
STYLE- B

DRILLING DETAIL 'B'

HOUSING.
STYLE- C

TERMINAL.
STYLE- C

DRILLING DETAIL 'D'

NOTES:

1. TERMINAL MUST MEET MOLEX SOLDERABILITY SPEC. No. 152.

MATERIAL:

HOUSING- NYLON, 94V-2, COLOUR- NATURAL
TERMINAL- PHOS. BR, PLATING-(P902)
HOT TIN DIP 1-2.5um (.000040"- .000100")



LEAD FREE CONVERSION EC No. E2004-0792 DRAWN: PSHEAHAN 04/03/04 CHK: / / / / APPR: / / / / REV: ZA	QUALITY SYMBOLS MAJOR CRITICAL	GENERAL TOLERANCES: (UNLESS SPECIFIED)		SCALE: mm INCH	DESIGN UNITS: mm INCH	DIMENSIONS: mm INCH mm ONLY		SHT: / REV: /
		4 PLACES ±0. ±.		DRAWN BY & DATE G. HART 24/11/82	TITLE: CONNECTOR, K-K (3.96)/.156 WITH OR WITHOUT LOCKING WITH P.C. TAIL TERMINALS			
		3 PLACES ±0. ±.		CHECKED BY & DATE M. GOONEY 26/11/98	MOLEX INCORPORATED			
		2 PLACES ±0. ±.		APPROVED BY & DATE MWILHITE 26/11/98	CAD FILENAME: SE32154.DGN MATERIAL NO.: SEE CHART DRAWING NO.: SDAE-3215-***N*** SHEET NO.: 4 OF			
1 PLACE ±0. ±.		ANGULAR: ± 1/2 °		THIS DRAWING CONTAINS INFORMATION THAT IS PROPRIETARY TO MOLEX INCORPORATED AND SHOULD NOT BE USED WITHOUT WRITTEN PERMISSION.				SIZE: C