

PLEASE CHECK WWW.MOLEX.COM FOR LATEST PART INFORMATION

Part Number: [0542979131](#)
Status: **Active**
Overview: [minihmc](#)
Description: HMC™ Rectangular Industrial Female Terminal, 54297, 12 AWG, White Retainer

Documents:

[3D Model](#) [Product Specification PS-54478-001 \(PDF\)](#)
[Drawing \(PDF\)](#) [RoHS Certificate of Compliance \(PDF\)](#)

General

Product Family	Crimp Terminals
Series	54297
Crimp Quality Equipment	Yes
Overview	minihmc
Product Name	HMC™

Physical

Gender	Female
Material - Metal	Brass
Material - Plating Mating	Silver
Packaging Type	Bag
Wire Insulation Diameter	5.00mm (.197") max.
Wire Size AWG	12
Wire Size mm²	N/A

Material Info

Reference - Drawing Numbers

Product Specification	PS-54478-001
Sales Drawing	SD-54297-9***



image - Reference only

EU RoHS

China RoHS

Compliance Status

Not Reviewed

REACH SVHC

Not Reviewed

Halogen-Free

Status

Not Reviewed

Need more information on product environmental compliance?

Email productcompliance@molex.com
 For a multiple part number RoHS Certificate of Compliance, [click here](#)

Please visit the [Contact Us](#) section for any non-product compliance questions.

Search Parts in this Series

[54297Series](#)

Mates With

[55125](#)

Use With

[54479 housing](#)

Application Tooling | FAQ

Tooling specifications and manuals are found by selecting the products below. Crimp Height Specifications are then contained in the Application Tooling Specification document.

Japan

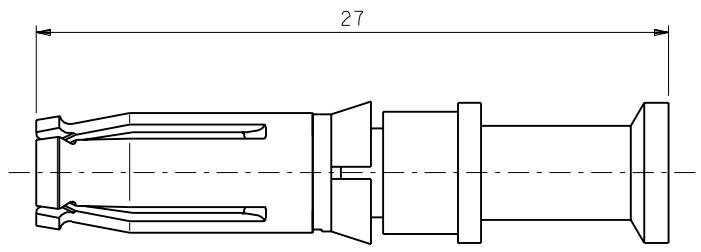
Description

Product #

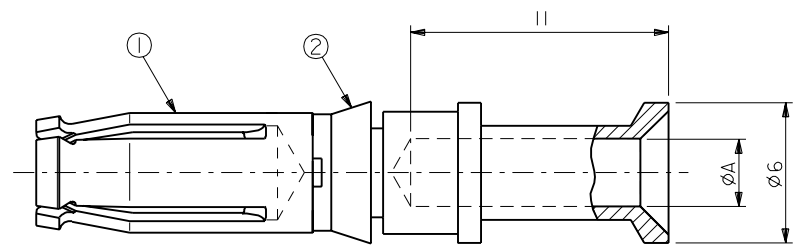
Hand Extraction Tool [0573886000](#)

DWG. NO.
SD-54297-9***

部番 NO.	部品名 PARTS NAME	個数 QUAN.	材質 MATERIAL
①	φ3.5ソケットコンタクト φ3.5 SOCKET CONTACT	1	黄銅, 銀メッキ BRASS, Ag PLATING
②	リテーナー RETAINER	1	66ナイロン NYLON 66



- 注)
NOTES:
1. 嵌合相手 : 55125-4***
MATING SOCKET CONTACT : 55125-4***
 2. 適用引き抜き工具 : 57388-6000
APPLICABLE EXTRACTION TOOL : 57388-6000
 3. 圧着工具の 57388-5200にはロケーター
(57388-5202) が付属されています。
LOCATOR (57388-5202) IS ATTACHED TO 57388-5200
OF THE CRIMP TOOL.



57388-5202		57388-5200	9.5±0.4	5	5.5~6	#0	黒 BLACK	3.5	54297-9231
58487-0000	57388-1000	57388-5000			3.5~4	#2	白 WHITE	2.85	54297-9131
③ ロケーター LOCATOR	半自動 SEMI-AUTOMATIC	手動 HAND	皮剥長さ(mm) STRIPPING LENGTH	被覆外径(φmm MAX.) INSULATION DIAMETER	断面積 (mm ²) SQ (mm ²)	電線径(AWG) WIRE SIZE(AWG)	リテーナー色 RETAINER COLOR	A	製品番号 ENG. NUMBER
			適用電線範囲 APPLICABLE WIRE RANGE						

材料 MATERIAL		表参照 SEE TABLE		molex MOLEX-JAPAN CO.,LTD. 日本モレックス株式会社	
仕上げ FINISH		表参照 SEE TABLE		REVISE ONLY ON CAD SYSTEM	
適用電線範囲 WIRE RANGE		表参照 SEE TABLE		TITLE 名称 φ3.5 SOCKET CONTACT ASS'Y (MACHINED TYPE)	
被覆外径 INS. RANGE		表参照 SEE TABLE		DWG. NO. SD-54297-9***	
DRAWN BY CHK'D BY		DATE		REV B	
APP'D BY DATE		尺 度 5-1			
一般公差 GENERAL TOLERANCES		記号 LTR		変更内容 REVISION RECORD	
DR. / CHK.		日付 DATE			