

PLEASE CHECK WWW.MOLEX.COM FOR LATEST PART INFORMATION

Part Number: **0191640018**
Status: **Active**
Description: Perma-Seal™ Female Quick Disconnect Receptacle for 18-22 AWG Wire, Tab Size 6.35mm (.250") x .081mm (.032"), Mylar Tape Carrier

Documents:

[Drawing \(PDF\)](#) [RoHS Certificate of Compliance \(PDF\)](#)

Agency Certification

CSA LR18689
 UL E79133

General

Product Family Quick Disconnects
 Series 19164
 Crimp Quality Equipment Yes
 Product Name Perma-Seal™
 Type Quick Disconnect

Physical

Barrel Type Closed
 Color - Resin Natural
 Flammability 94V-0
 Gender Female
 Glow-Wire Compliant No
 Insulation NiAc™
 Lock to Mating Part None
 Material - Metal Brass
 Material - Resin Nylon
 Orientation Straight
 Packaging Type Adhesive Tape on Reel
 Tab Thickness 0.81mm (.032")
 Tab Width 6.35mm (.250")
 Temperature Range - Operating -55°C to +125°C
 Wire Insulation Diameter 4.32mm (.170") max.
 Wire Size AWG 18, 20, 22
 Wire Size mm² 0.25 - 1.50

Electrical

Voltage - Maximum 600V

Material Info

Old Part Number SAA-9261T

Reference - Drawing Numbers

Sales Drawing SD-19164-020



Series

image - Reference only

EU RoHS

ELV and RoHS Compliant

REACH SVHC

Not Reviewed

Halogen-Free

Status

Not Reviewed

China RoHS



Need more information on product environmental compliance?

Email productcompliance@molex.com
 For a multiple part number RoHS Certificate of Compliance, [click here](#)

Please visit the [Contact Us](#) section for any non-product compliance questions.

Search Parts in this Series

[19164Series](#)

Application Tooling | FAQ

Tooling specifications and manuals are found by selecting the products below. Crimp Height Specifications are then contained in the Application Tooling Specification document.

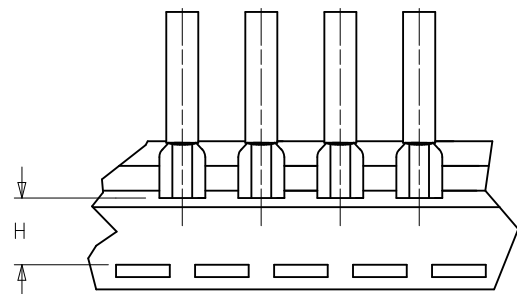
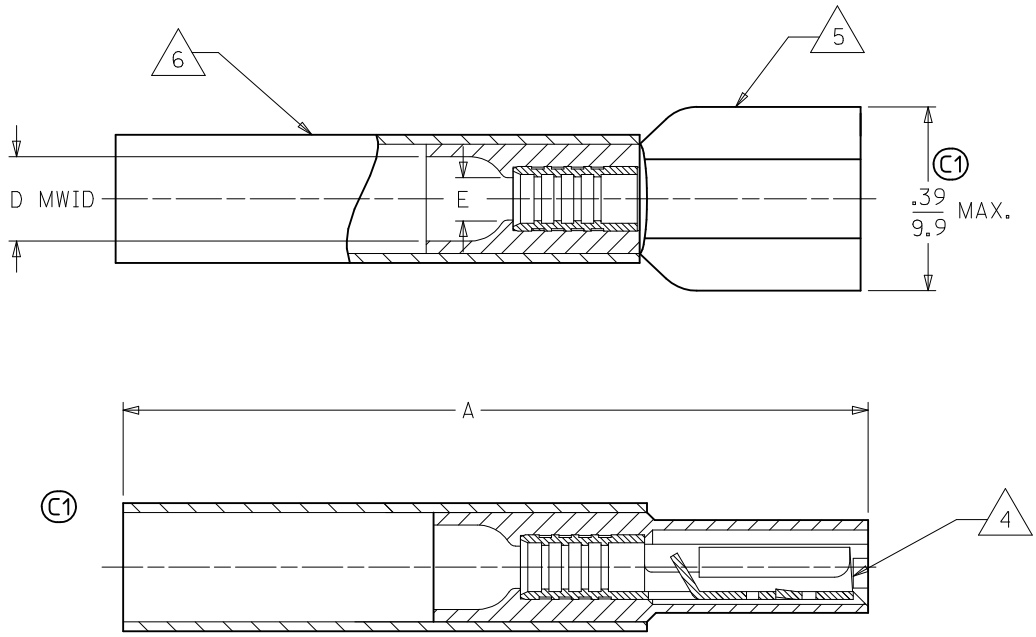
Global

Description

Product #

| | |
|---|----------------------------|
| Crimp Dies for MTA-100 Tape Applicator used in 3BF Press, MTA-105 Tape Applicator used in TM-2000™ Press, and ATP-301 Air Crimping Press for Mylar Tape Mounted Terminals | 0192880095 |
|---|----------------------------|

| MATERIAL NUMBER | ENGINEERING NUMBER | TAPE MATERIAL NUMBER | TAPE ENGINEERING NUMBER | WIRE SIZE AWG | WIRE SIZE MM SQ. | FITS MALE TAB | PERMA-SEAL COLOR | Ⓢ A MAX. | Ⓢ D MWID | E Ⓢ MIN | H NOMINAL |
|-----------------|--------------------|----------------------|-------------------------|---------------|------------------|---------------|------------------|-----------|----------|-----------|-----------|
| 191640017 | SAA-9261 | 191640018 | SAA-9261T | 22-18 | .25-1.5 | .250 X .032 | RED | 1.50/38.1 | .17/4.3 | .081/2.05 | .55/14.0 |
| 191640050 | SBB-9263 | 191640051 | SBB-9263T | 16-14 | 1.0-2.5 | .250 X .032 | BLUE | 1.50/38.1 | .18/4.5 | .081/2.05 | .55/14.0 |
| 191640076 | SC-9281 | 191640305 | SC-9281T | 12-10 | 4.0-6.0 | .250 X .032 | YELLOW | 1.52/38.6 | .23/5.8 | .140/3.56 | .56/14.2 |



TAPE MOUNTING DETAIL

- NOTES:
- Ⓢ 1. FEMALE RECEPTACLE CONFORMS TO UL310.
 - 2. ALL DIMENSIONS SHOWN ARE BEFORE SHRINK TUBING IS HEATED.
 - 3. "MWID" DENOTES MAX. WIRE INSULATION DIA.
 - 4. TAB MATERIAL: .018 THK, BRASS, PLATING, TIN.
 - 5. INSULATION MAT'L: MOLDED NYLON
 - Ⓢ 6. NYLON TUBING WITH HOTMELT INNER LINER. SEE CHART FOR COLOR.
 - Ⓢ 7. ALL PARTS ARE ROHS COMPLIANT.

| | | | | | | | | | | |
|--|-------------------------------|---------------------------------------|-------------|-----------------|------------------------|------------|--------------------------------------|------------------------|---|--|
| CORRECT SPECS EC NO: WNA2010-0115 DRW: WETHRODAHL 2010/02/16 CHKD: JMACNEIL 2010/02/18 APPR: JMACNEIL 2010/02/22 | QUALITY SYMBOLS ▽=0 ▽=0 | GENERAL TOLERANCES (UNLESS SPECIFIED) | | DIMENSION STYLE | | SCALE | DESIGN UNITS | THIRD ANGLE PROJECTION | | |
| | | | | IN/MM | | --- | INCH | | | |
| | | 4 PLACES | ±--- | ±--- | DRAWN BY | DATE | TITLE | | | |
| | | 3 PLACES | ±--- | ±--- | BRE | 2002/10/29 | PERMA-SEAL COUPLER FEMALE RECEPTACLE | | | |
| 2 PLACES | ±--- | ±--- | CHECKED BY | DATE | MATERIAL NO. SEE CHART | | | | | |
| 1 PLACE | ±--- | ±--- | HEB | 2002/10/29 | | | | | DOCUMENT NO. SD-19164-020 | |
| ANGULAR ±--- | | ° | APPROVED BY | DATE | SHEET NO. 1 OF 1 | | | | | |
| | | | RWD | 2002/10/29 | | | | | THIS DRAWING CONTAINS INFORMATION THAT IS PROPRIETARY TO MOLEX INCORPORATED AND SHOULD NOT BE USED WITHOUT WRITTEN PERMISSION | |