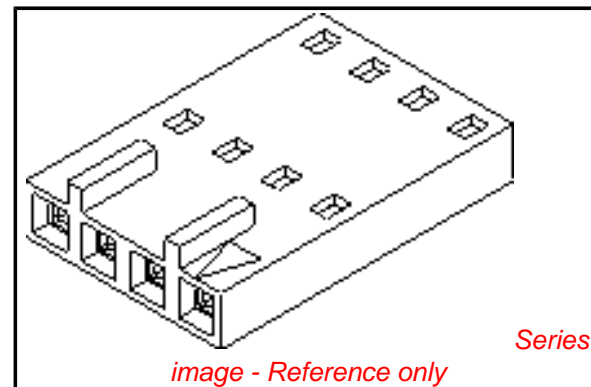


PLEASE CHECK WWW.MOLEX.COM FOR LATEST PART INFORMATION

Part Number: [0050579223](#)
Status: **Active**
Overview: [cgrid_sl_products](#)
Description: 2.54mm (.100") Pitch SL™ Crimp Housing, Single Row, Version C, Front Ribs, 23 Circuits

Documents:

3D Model	Product Specification PS-70058 (PDF)
Drawing (PDF)	Product Specification PS-70400 (PDF)
Packaging Specification (PDF)	RoHS Certificate of Compliance (PDF)



Agency Certification

CSA	LR19980
TUV	R72081037
UL	E29179

General

Product Family	Crimp Housings
Series	70066
Comments	Version C
Overview	cgrid_sl_products
Product Name	SL™

Physical

Circuits (maximum)	23
Color - Resin	Black
Flammability	94V-0
Gender	Female
Glow-Wire Compliant	No
Material - Resin	Polyester Alloy
Number of Rows	1
Packaging Type	Bag
Panel Mount	No
Pitch - Mating Interface (in)	0.100 In
Pitch - Mating Interface (mm)	2.54 mm
Stackable	No
Temperature Range - Operating	-40°C to +105°C

Material Info

Old Part Number	70066-0092
-----------------	------------

Reference - Drawing Numbers

Packaging Specification	PK-70066-100
Product Specification	PS-70058, PS-70400
Sales Drawing	SD-70066-0071-0094
Test Summary	TS-70058-001

EU RoHS ELV and RoHS Compliant REACH SVHC Contains SVHC: No Halogen-Free Status Not Reviewed	China RoHS 
---	--

Need more information on product environmental compliance?

Email productcompliance@molex.com
 For a multiple part number RoHS Certificate of Compliance, [click here](#)

Please visit the [Contact Us](#) section for any non-product compliance questions.

Search Parts in this Series

[70066Series](#)

Mates With

[70544](#), [70546](#), [70554](#), [70556](#), [70543](#), [70545](#), [70553](#), [70555](#)

Use With

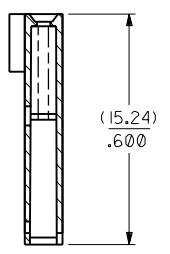
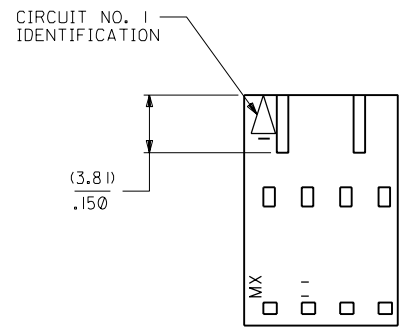
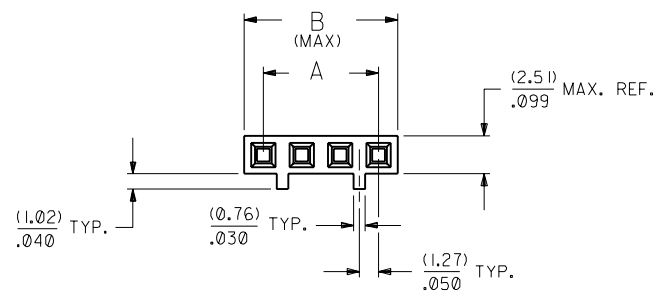
[70058](#), [71851](#)

70066

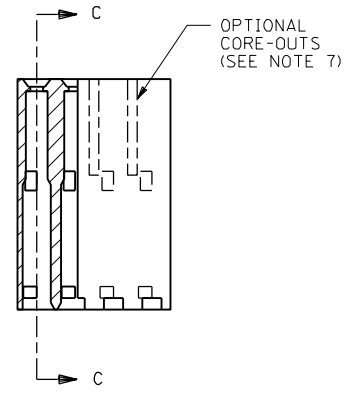
NOTES:

- 1) MATERIAL: G.F. POLYESTER
- 2) HOUSING TO BE USE WITH TERMINAL PT. NO. 70058-****
- 3) SEE CHART FOR CIRCUIT SIZES.
- 4) TO BE USED WITH (0.64)/.025 SQ. OR RD. PINS.
- 5) PARTS STACKABLE END TO END ON (2.54)/.100 CENTERS.
- 6) REFER TO PRODUCT SPECIFICATION NO. : P.S.-70058
- 7) PARTS MAY OR MAY NOT BE SUPPLIED WITH EXTERIOR CORE-OUT CONFIGURATION. SEE DWG. SD-70066-**** FOR OPTIONAL HOUSING DETAILS.
- 8) PACKAGE PER PK-70066-100.

OPTION "C"



SECTION C-C



CKT. SIZE	EDP. NO.	ENG. NO.	A	B
2	50-57-9202	70066-0071	(2.54)/.100	(5.05)/.199
3	50-57-9203	70066-0072	(5.08)/.200	(7.59)/.299
4	50-57-9204	70066-0073	(7.62)/.300	(10.13)/.399
5	50-57-9205	70066-0074	(10.16)/.400	(12.67)/.499
6	50-57-9206	70066-0075	(12.70)/.500	(15.21)/.599
7	50-57-9207	70066-0076	(15.24)/.600	(17.75)/.699
8	50-57-9208	70066-0077	(17.78)/.700	(20.29)/.799
9	50-57-9209	70066-0078	(20.32)/.800	(22.83)/.899
10	50-57-9210	70066-0079	(22.86)/.900	(25.37)/.999
11	50-57-9211	70066-0080	(25.40)/1.000	(27.91)/1.099
12	50-57-9212	70066-0081	(27.94)/1.100	(30.45)/1.199
13	50-57-9213	70066-0082	(30.48)/1.200	(32.99)/1.299
14	50-57-9214	70066-0083	(33.02)/1.300	(35.53)/1.399
15	50-57-9215	70066-0084	(35.56)/1.400	(38.07)/1.499
16	50-57-9216	70066-0085	(38.10)/1.500	(40.61)/1.599
17	50-57-9217	70066-0086	(40.64)/1.600	(43.15)/1.699
18	50-57-9218	70066-0087	(43.18)/1.700	(45.69)/1.799
19	50-57-9219	70066-0088	(45.72)/1.800	(48.23)/1.899
20	50-57-9220	70066-0089	(48.26)/1.900	(50.77)/1.999
21	50-57-9221	70066-0090	(50.80)/2.000	(53.31)/2.099
22	50-57-9222	70066-0091	(53.34)/2.100	(55.85)/2.199
23	50-57-9223	70066-0092	(55.88)/2.200	(58.39)/2.299
24	50-57-9224	70066-0093	(58.42)/2.300	(60.93)/2.399
25	50-57-9225	70066-0094	(60.96)/2.400	(63.47)/2.499

DIMENSIONS SHOWN (METRIC) INCH UNLESS OTHERWISE SPECIFIED TOLERANCES: ANGULAR ± 1/2°		REVISIONS E REVISED PER ECR# U10967 8-8-91 MJM/MGB D REVISED PER ECR# U80051 3-27-89 MCB C REDRAWN ON CAD ECR # 9120 5/5/86 WZ		DRAFT WHERE APPLICABLE MUST REMAIN WITHIN DIMENSIONS	
5 PLACE ± .010 --- 2 PLACE ± .014 ± 0.25 1 PLACE --- ± 0.35		DRWG. NO. SD-70066-0071-0094 FILE NAME 700660071		SHEET NO. 1 DATE 03/26/86	
MFG. SH. REV.		REVISIONS LTR. REVISIONS		TITLE HOUSING CONNECTOR (2.54)/.100 GRID STACKABLE SINGLE ROW	
ADD PKG NOTE ECN UDT2000-0468 SCHAFFER 99/12/1		REVISIONS LTR. REVISIONS		MOLEX INCORPORATED L1SLE,ILL. 60532 U.S.A.	
REVISIONS LTR. REVISIONS		REVISIONS LTR. REVISIONS		THIS DRAWING CONTAINS INFORMATION THAT IS PROPRIETARY TO MOLEX INC. AND SHOULD NOT BE USED WITHOUT WRITTEN PERMISSION.	