

PLEASE CHECK WWW.MOLEX.COM FOR LATEST PART INFORMATION

Part Number: [0359410299](#)
Status: **Active**
Description: 4.75mm (.187") Tab Housing, 15.20mm (.598") Pitch, Positive Latch, for Drain Motor, 2 Circuits, UL94V-0, White

Documents:

[3D Model](#) [Product Specification PS-35941-001 \(PDF\)](#)
[Drawing \(PDF\)](#) [RoHS Certificate of Compliance \(PDF\)](#)

General

Product Family Crimp Housings
 Series [35941](#)
 Product Name N/A

Physical

Circuits (maximum) 2
 Gender Female
 Glow-Wire Compliant No
 Lock to Mating Part Yes
 Number of Rows 1
 Packaging Type Bag
 Panel Mount No
 Pitch - Mating Interface (in) 0.598 In
 Pitch - Mating Interface (mm) 15.20 mm
 Polarized to Mating Part Yes
 Temperature Range - Operating -40°C to +105°C

Electrical

Current - Maximum per Contact 10A

Material Info

Reference - Drawing Numbers

Product Specification PS-35941-001
 Sales Drawing SD-35941-001

EU RoHS

ELV and RoHS Compliant

REACH SVHC

Not Reviewed

Halogen-Free

Status

Not Reviewed

China RoHS



Need more information on product environmental compliance?

Email productcompliance@molex.com
 For a multiple part number RoHS Certificate of Compliance, [click here](#)

Please visit the [Contact Us](#) section for any non-product compliance questions.

Search Parts in this Series

[35941Series](#)

Mates With

[Drain Motor Interface](#)

Use With

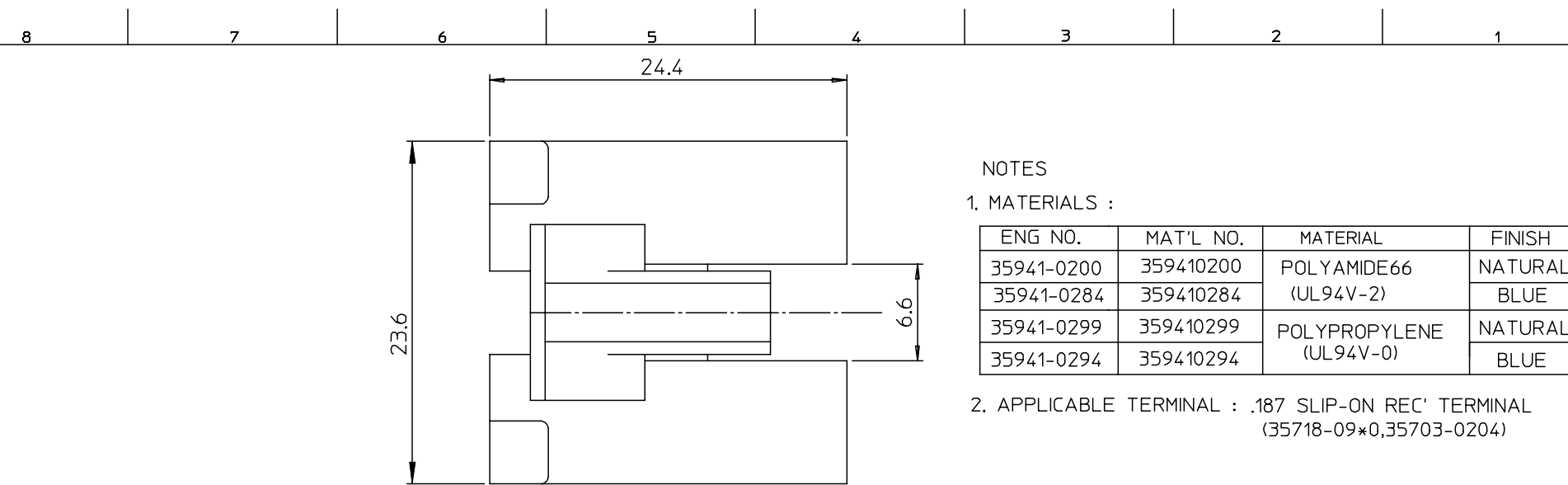
[35703-0204 Terminal](#), [35718-0900 Terminal](#), [35718-0910 Terminal](#)

DWG. NO.
SD-35941-001

SIMILAR ITEM

PROJECT NO.

DO NOT SCALE DRAWING
DIMENSION IN METRIC

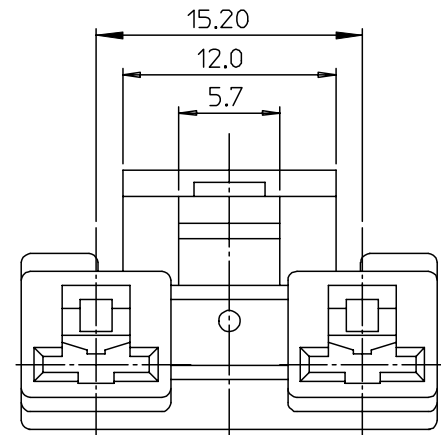
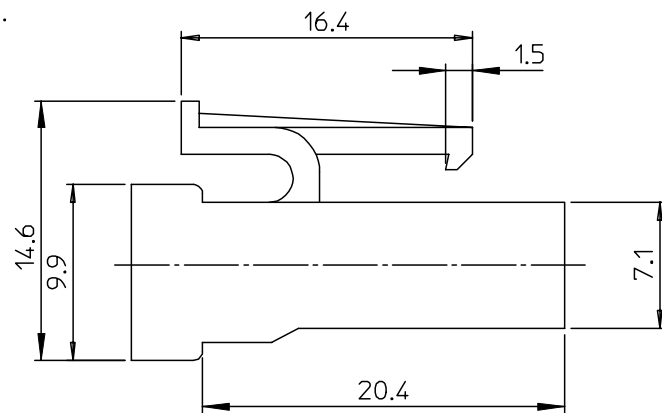
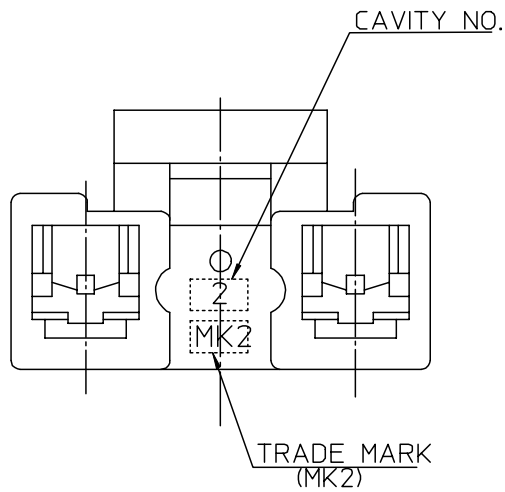


NOTES

1. MATERIALS :

ENG NO.	MAT'L NO.	MATERIAL	FINISH
35941-0200	359410200	POLYAMIDE66 (UL94V-2)	NATURAL
35941-0284	359410284		BLUE
35941-0299	359410299	POLYPROPYLENE (UL94V-0)	NATURAL
35941-0294	359410294		BLUE

2. APPLICABLE TERMINAL : .187 SLIP-ON REC' TERMINAL
(35718-09*0,35703-0204)



REV	DESCRIPTION	QUALITY SYMBOLS	GENERAL TOLERANCES: (UNLESS SPECIFIED)		SCALE	DESIGN UNITS	THIRD ANGLE PROJECTION	DIMENSIONS:		SHT	REV	
			mm	INCH				mm ONLY	INCH ONLY			
		MAJOR ▽ = 0	4 PLACES	±0.	±-	DRAWN BY & DATE W.Y.YNAG 99/11/14	TITLE: .187 HOUSING-2P (FOR DRAIN MOTOR)	MOLEX INCORPORATED		SHEET NO. 1 OF 1	REVISE ON CAD ONLY	
		CRITICAL ∇ = 0	3 PLACES	±0.	±-							CHECKED BY & DATE B.K.CHOI 99/11/14
			2 PLACES	±0.30	±-							APPROVED BY & DATE C.W.LEE 99/11/14
			1 PLACE	±0.30	±-							
			ANGULAR: ± 1 °		CAD FILENAME S9410200.MI	MATERIAL NO. SEE NOTES	DRAWING NO. SD-35941-001					
			DRAFT WHERE APPLICABLE MUST REMAIN WITHIN DIMENSIONS		THIS DRAWING CONTAINS INFORMATION THAT IS PROPRIETARY TO MOLEX INCORPORATED AND SHOULD NOT BE USED WITHOUT WRITTEN PERMISSION.						SIZE B	