

PLEASE CHECK WWW.MOLEX.COM FOR LATEST PART INFORMATION

Part Number: [0887683520](#)
Status: **Active**
Overview: high definition multimedia interface hdmi
Description: HDMI*-to-DVI-Digital Cable Assembly, 28 AWG, 3.0m (9.84') Length

Documents:

[Drawing \(PDF\)](#) [RoHS Certificate of Compliance \(PDF\)](#)
[Product Specification PS-88768-001 \(PDF\)](#)

General

Product Family	Cable Assemblies
Series	88768
Connector to Connector	HDMI*-to-DVI-Digital
Overview	<u>high definition multimedia interface hdmi</u>
Product Name	HDMI*

Physical

Cable Length	3.0m (9.84')
Circuits (Loaded)	19
Color - Resin	Black, Natural
Gender	Male-Male
Lock to Mating Part	Yes
Material - Metal	High Performance Alloy (HPA), Phosphor Bronze
Material - Plating Mating	Gold
Material - Plating Termination	Tin
Material - Resin	High Temperature Thermoplastic, Low Density Polyethylene, Polyester
Packaging Type	Bag
Pitch - Mating Interface (in)	0.039 In
Pitch - Mating Interface (mm)	1.00 mm
Plating min: Mating (µin)	10, 32
Plating min: Mating (µm)	0.25, 0.8
Plating min: Termination (µin)	150, 50.8
Plating min: Termination (µm)	1.27, 3.75
Single Ended	No
Termination Interface: Style	Solder or Weld, Through Hole
Wire Insulation Diameter	N/A
Wire Size AWG	28
Wire/Cable Type	Round

Electrical

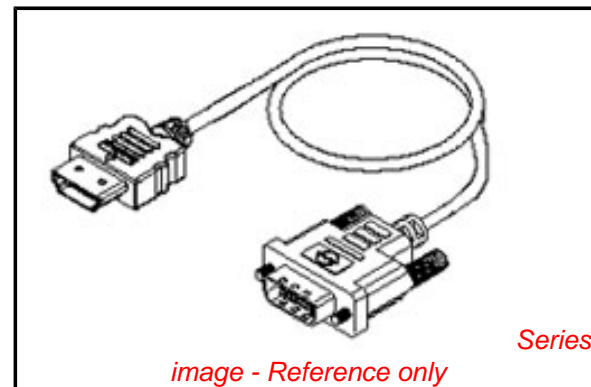
Current - Maximum per Contact	0.5A
Impedance	100 ohms
Shielded	Yes
Voltage - Maximum	40V

Material Info

Reference - Drawing Numbers

Product Specification	PS-88768-001
Sales Drawing	SD-88768-3520, SD-887683520, SD887683520

*High Definition Multimedia Interface and HDMI are trademarks of HDMI Licensing, LLC.



EU RoHS

RoHS Compliant by Exemption
REACH SVHC Not Reviewed
Halogen-Free Status Not Reviewed

China RoHS



Need more information on product environmental compliance?

Email productcompliance@molex.com
 For a multiple part number RoHS Certificate of Compliance, [click here](#)

Please visit the [Contact Us](#) section for any non-product compliance questions.

Search Parts in this Series
 88768Series

6

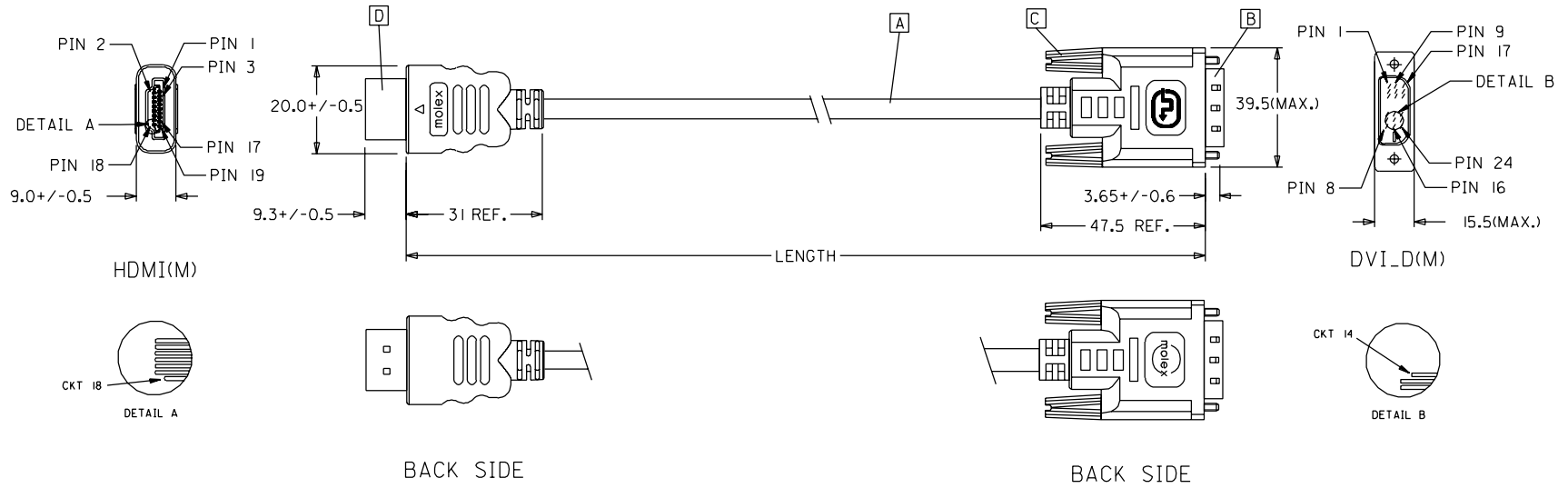
5

4

3

2

1



88768-3620	HDMI TO DVI-D(M) CABLE ASS'Y,3M	3000+/-80	BLACK	5,5MM(TMDS - AWG*30)
88768-3610	HDMI TO DVI-D(M) CABLE ASS'Y,2M	2000+/-60	BLACK	5,5MM(TMDS - AWG*30)
88768-3600	HDMI TO DVI-D(M) CABLE ASS'Y,1M	1000+/-30	BLACK	5,5MM(TMDS - AWG*30)
88768-3530	HDMI TO DVI-D(M) CABLE ASS'Y,5M	5000+/-100	BLACK	7,3MM(TMDS - AWG*28)
88768-3520	HDMI TO DVI-D(M) CABLE ASS'Y,3M	3000+/-80	BLACK	7,3MM(TMDS - AWG*28)
88768-3510	HDMI TO DVI-D(M) CABLE ASS'Y,2M	2000+/-60	BLACK	7,3MM(TMDS - AWG*28)
88768-3500	HDMI TO DVI-D(M) CABLE ASS'Y,1M	1000+/-30	BLACK	7,3MM(TMDS - AWG*28)
MX P/N	DESCRIPTION	LENGTH	CABLE COLOR	CABLE OD

EC NO. DRWN: CHK: APPR:	DESCRIPTION	QUALITY SYMBOLS	GENERAL TOLERANCES: (UNLESS SPECIFIED)		SCALE N.S.T	DESIGN UNITS <input checked="" type="checkbox"/> mm <input type="checkbox"/> INCH	THIRD ANGLE PROJECTION	<input type="checkbox"/> mm INCH	<input type="checkbox"/> mm mm	<input checked="" type="checkbox"/> mm ONLY	SHT	REV
		MAJOR ▼ = 0	4 PLACES	±0.	±.	DRAWN BY & DATE Louis Chen 03/11/17		TITLE: HDMI(M) TO DVI-D(M) CABLE ASS'Y				
		CRITICAL ▽ = 0	3 PLACES	±0.	±.	CHECKED BY & DATE Teddy Kan 03/11/17		MOLEX INCORPORATED				
			2 PLACES	±0.	±.	APPROVED BY & DATE Baron Chen 03/11/17						
REV			ANGULAR: ±	°	THIS DRAWING CONTAINS INFORMATION THAT IS PROPRIETARY TO MOLEX INCORPORATED AND SHOULD NOT BE USED WITHOUT WRITTEN PERMISSION.						SIZE A4	

6

5

4

3

2

1

NOTE: 1. OVERMOLD SPECIFICATION

1.1 DVI BOOT MOLDED WITH SNOW WHITE PVC RESIN P/N.

1.1.1 UL94V-0

1.1.2 HARDNESS (DUROMETER): SHORE A 90-95

1.2 HDMI OUTER MOLD WITH BLACK PVC RESIN. UL94V-0.

2. MECHANICAL SPECIFICATION

2.1 CABLE SHOULD STAND THE PULL FORCE 89-111N FOR 30 SECONDS WITH NO VISIBLE TERMINATION DAMAGE.

2.2 CABLE SHOULD PASS THE FLEX TEST IN 100 CYCLES AT EACH OF PLANES, PER EIA 364-41, CONDITION 1.

3. CABLE ELECTRICAL SPECIFICATION

3.1 DIELECTRIC STRENGTH: 300V AC FOR 10MS.

3.2 INSULATION RESISTANCE: 10 MEGA Ohms MIN.

3.3 DIFFERENTIAL LINES CHARACTERISTIC IMPEDANCE: 100+/-10 Ohms @TDR.

3.4 CONTACT RESISTANCE: 2 OHMS(MAX.).

3.5 SIGNALS CROSSTALK(FEXT): 5% (MAX.) PER ANSI/EIA-364-90.


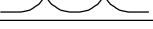






3.6 SIGNALS INTRA-PAIR SKEW : <150 ps.

4. DVI CONNECTOR SPECIFICATION


4.1 REFER TO PRODUCT SPEC. PS74320-0001.

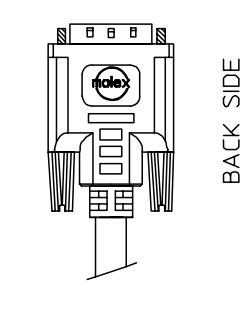
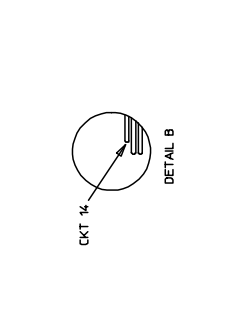
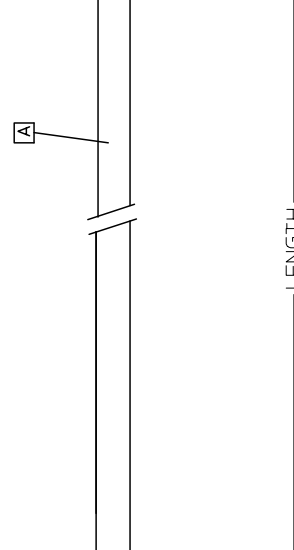
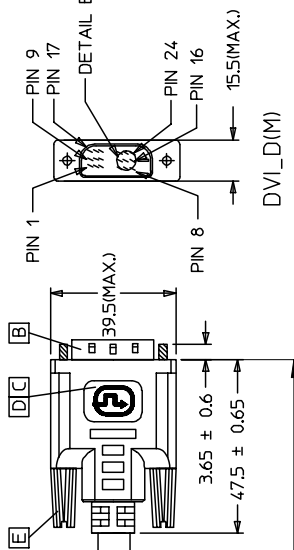
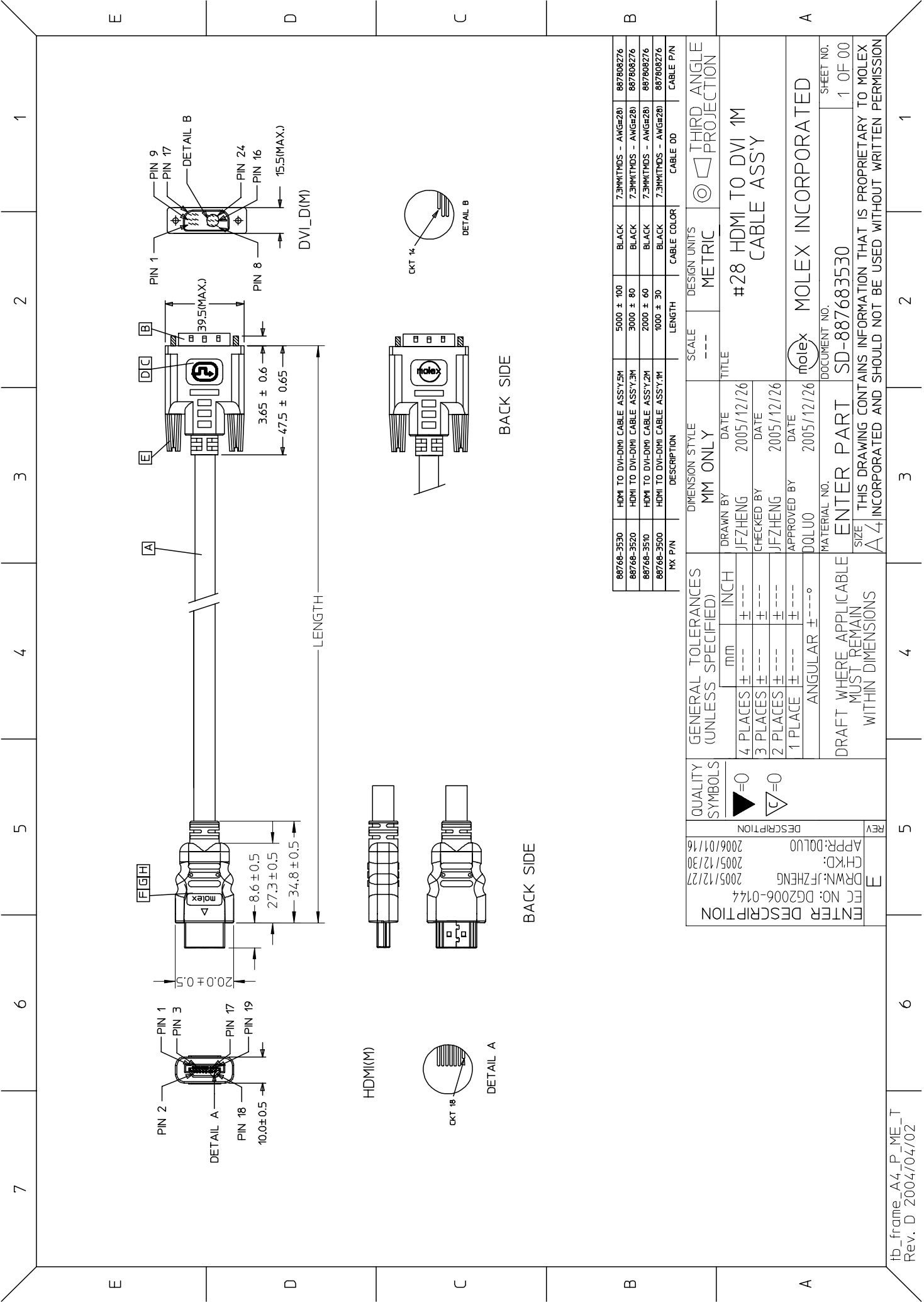
4.2 CONTACT PLATING: AU FLASH.

5. MATERIAL MUST MEET MANAGEMENT REGULATIONS FOR ENVIRONMENT (MX TS-0002).

SHIELD	SHIELD		GROUND
PIN 19	PIN 16	=====	HOT PLUG DETECT
PIN 18	PIN 14	=====	POWER +5V
PIN 17	PIN 15	=====	GROUND(+5V&DDC)
PIN 16	PIN 7	=====	DDC DATA(SDA)
PIN 15	PIN 6	=====	DDC CLOCK(SCL)
PIN 11	PIN 22	=====	TMDS CLOCK SHIELD
PIN 12	PIN 24		TMDS CLOCK-
PIN 10	PIN 23		TMDS CLOCK+
PIN 8	PIN 19	=====	TMDS DATA 0 SHIELD
PIN 9	PIN 17		TMDS DATA 0-
PIN 7	PIN 18		TMDS DATA 0+
PIN 5	PIN 11	=====	TMDS DATA 1 SHIELD
PIN 6	PIN 9		TMDS DATA 1-
PIN 4	PIN 10		TMDS DATA 1+
PIN 2	PIN 3	=====	TMDS DATA 2 SHIELD
PIN 3	PIN 1		TMDS DATA 2-
PIN 1	PIN 2		TMDS DATA 2+
HDMI	DVI-D	COLOR	CABLE FUNCTION

D	HDMI PLUG ASSY'	1
C	DVI THUMB SCREW	2
B	DVI_D SINGLE CHANNEL G/F CONNECTOR	1
A	DVI SINGLE LINK CABLE (SEE TABLE)	1
ITEM	DESCRIPTION	QTY.

EC NO. C	DRWN: CHK: APPR:	DESCRIPTION REV	QUALITY SYMBOLS MAJOR ▼ = 0 CRITICAL ▽ = 5	GENERAL TOLERANCES: (UNLESS SPECIFIED)		SCALE N.S.T	DESIGN UNITS <input checked="" type="checkbox"/> mm <input type="checkbox"/> INCH	THIRD ANGLE PROJECTION 	<input type="checkbox"/> mm INCH <input type="checkbox"/> mm <input checked="" type="checkbox"/> mm ONLY	SHT	REV
				4 PLACES ±0.	±.	DRAWN BY & DATE Louis Chen 03/11/17	TITLE: HDMI(M) TO DVI-D(M) CABLE ASS'Y			REVISION ON CAD ONLY	
				3 PLACES ±0.	±.	CHECKED BY & DATE Teddy Kan 03/11/17	APPROVED BY & DATE Boron Chen 03/11/17				
				2 PLACES ±0.	±.	CAD FILENAME S88768AA.S02		MATERIAL NO. SEE TABLE	DRAWING NO. SD-88768-001	SHEET NO. 2 OF 2	
				1 PLACE ±0.	±.	THIS DRAWING CONTAINS INFORMATION THAT IS PROPRIETARY TO MOLEX INCORPORATED AND SHOULD NOT BE USED WITHOUT WRITTEN PERMISSION.					
				ANGULAR: ± °		MOLEX INCORPORATED					
						SIZE A4					



PKT P/N	DESCRIPTION	LENGTH	CABLE COLOR	CABLE P/N
88768-3530	HDMI TO DVI-D(M) CABLE ASSY.5M	5000 ± 100	BLACK	7.3MM(TMDS - AWGR28) 887808276
88768-3520	HDMI TO DVI-D(M) CABLE ASSY.3M	3000 ± 80	BLACK	7.3MM(TMDS - AWGR28) 887808276
88768-3510	HDMI TO DVI-D(M) CABLE ASSY.2M	2000 ± 60	BLACK	7.3MM(TMDS - AWGR28) 887808276
88768-3500	HDMI TO DVI-D(M) CABLE ASSY.1M	1000 ± 30	BLACK	7.3MM(TMDS - AWGR28) 887808276

GENERAL TOLERANCES (UNLESS SPECIFIED)	QUALITY SYMBOLS	DESIGN STYLE	SCALE	DESIGN UNITS
4 PLACES ± --- INCH	▶=0	MM ONLY	---	METRIC
3 PLACES ± ---	◁=0	DRAWN BY JFZHENG	DATE 2005/12/26	TITLE #28 HDMI TO DVI 1M CABLE ASSY
2 PLACES ± ---		CHECKED BY JFZHENG	DATE 2005/12/26	
1 PLACE ± ---		APPROVED BY DDLUO	DATE 2005/12/26	
ANGULAR ± ---°		MATERIAL NO. ENTER PART SD-887683530	DOCUMENT NO.	SHEET NO. 1 OF 00
DRAFT WHERE APPLICABLE MUST REMAIN WITHIN DIMENSIONS				

MOLEX MOLEX INCORPORATED

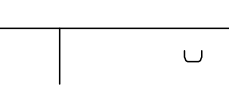
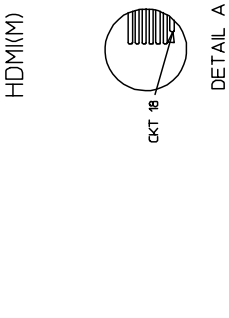
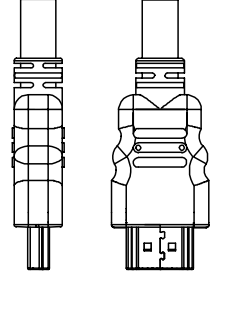
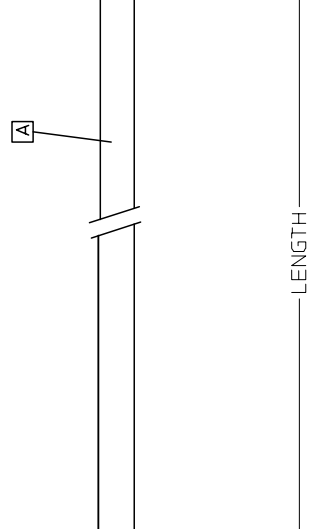
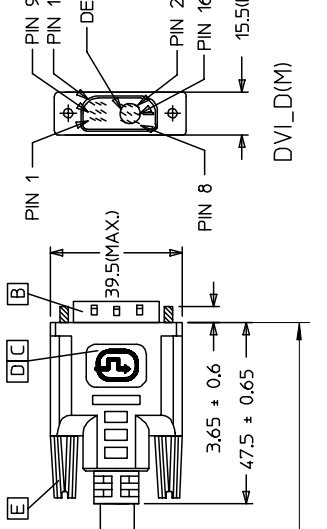
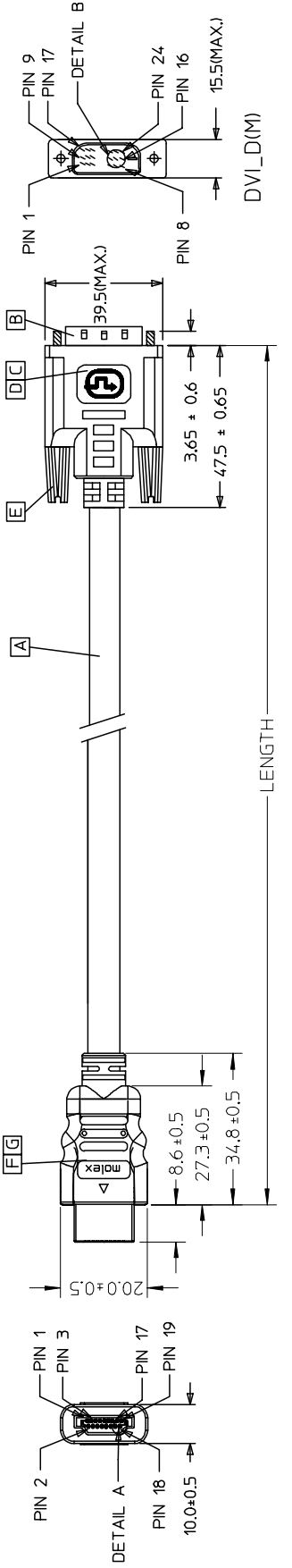
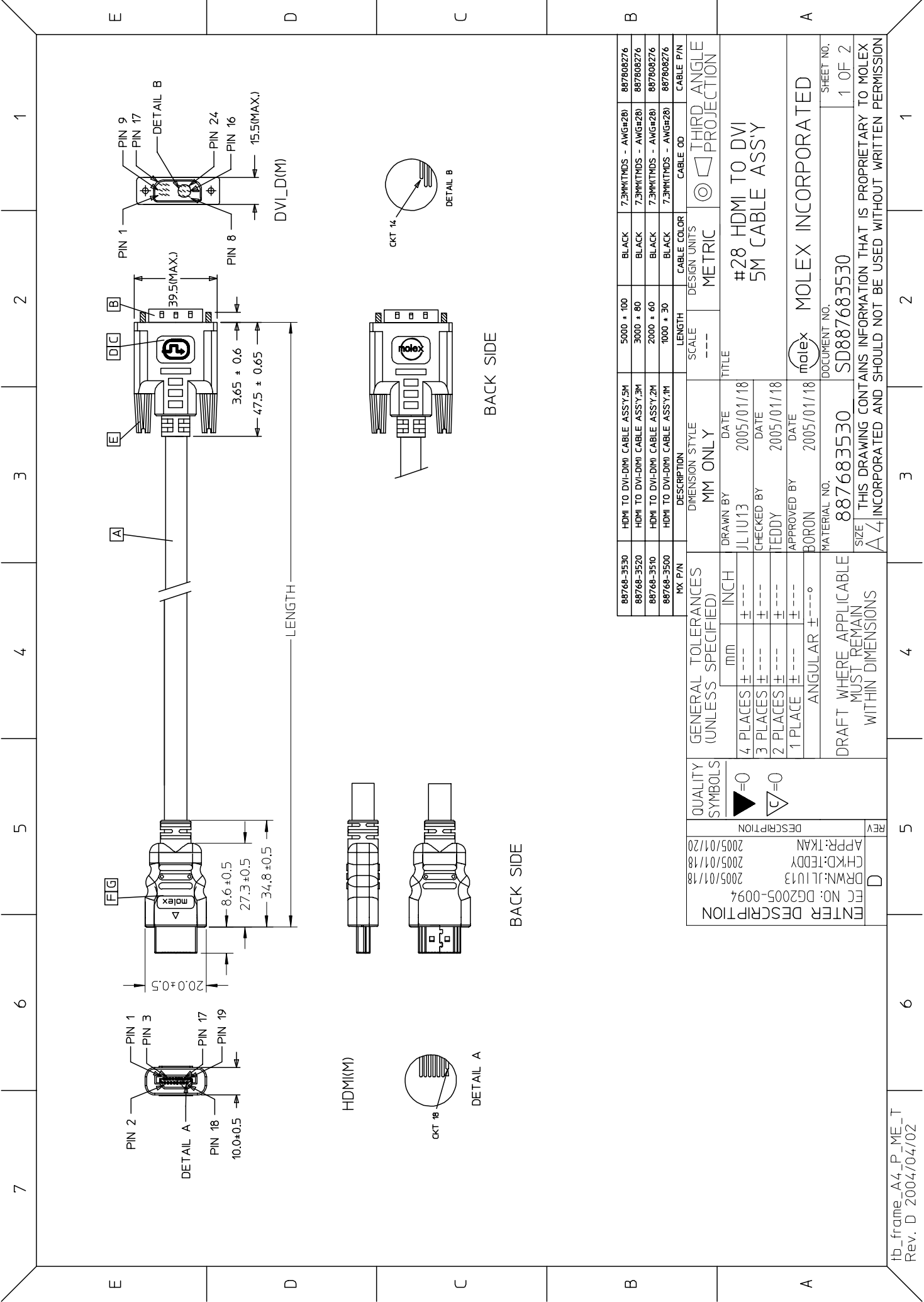
THIS DRAWING CONTAINS INFORMATION THAT IS PROPRIETARY TO MOLEX AND SHOULD NOT BE USED WITHOUT WRITTEN PERMISSION

MOLEX MOLEX INCORPORATED

SD-887683530

1 OF 00

1

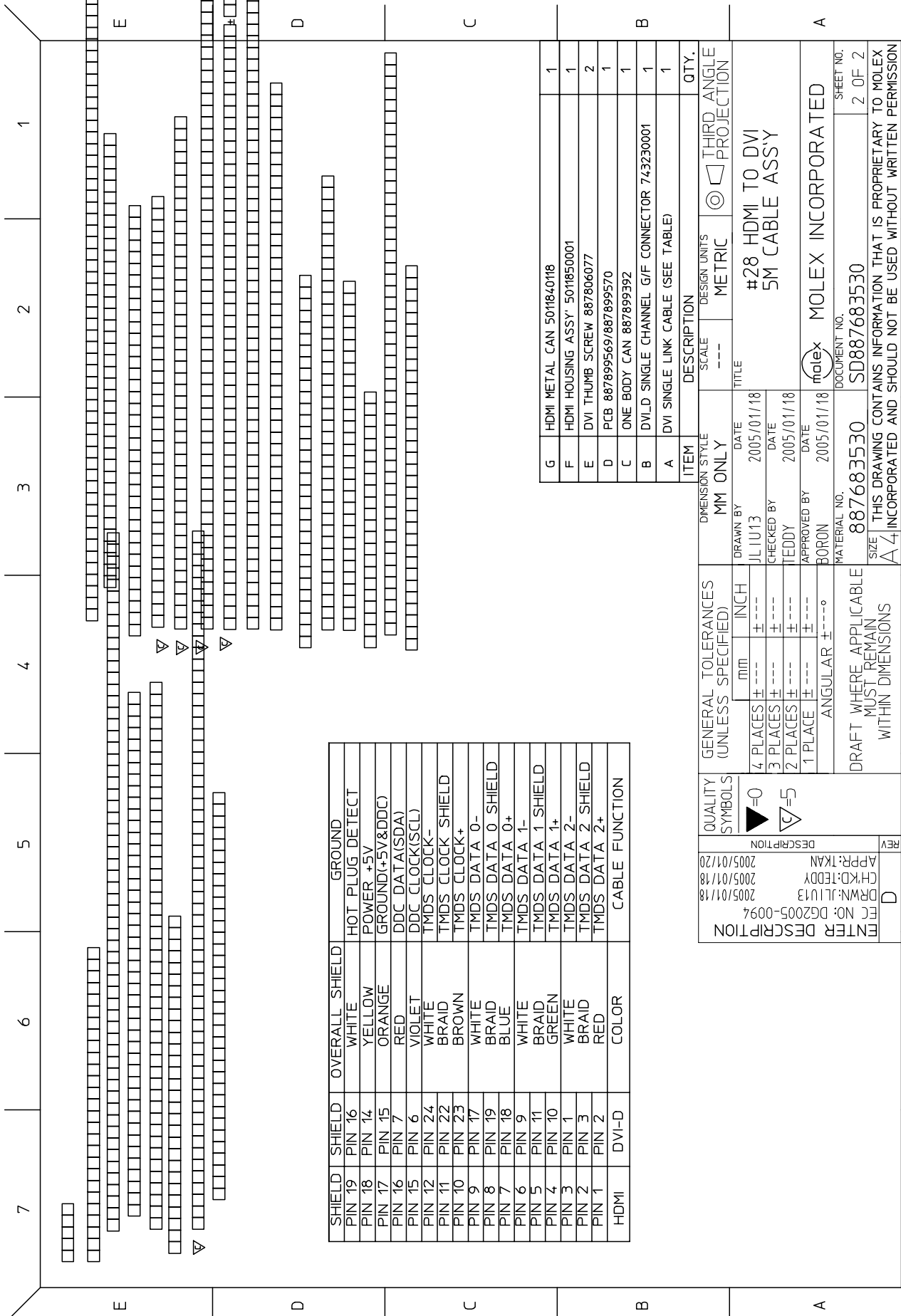


88768-3530	HDMI TO DVI-D(M) CABLE ASSY,5M	5000 ± 100	BLACK	7.3MM(TMS - AWG#28)	887808276
88768-3520	HDMI TO DVI-D(M) CABLE ASSY,3M	3000 ± 80	BLACK	7.3MM(TMS - AWG#28)	887808276
88768-3510	HDMI TO DVI-D(M) CABLE ASSY,2M	2000 ± 60	BLACK	7.3MM(TMS - AWG#28)	887808276
88768-3500	HDMI TO DVI-D(M) CABLE ASSY,1M	1000 ± 30	BLACK	7.3MM(TMS - AWG#28)	887808276

MM ONLY	SCALE	DESIGN UNITS	THIRD ANGLE PROJECTION
MM ONLY	---	METRIC	THIRD ANGLE PROJECTION
DRAWN BY		TITLE	
JL IU13	DATE	#28 HDMI TO DVI	
2005/01/18	DATE	5M CABLE ASSY	
CHECKED BY			
TEDDY	DATE		
2005/01/18	DATE		
APPROVED BY			
BORON	DATE		
2005/01/18	DATE		

GENERAL TOLERANCES (UNLESS SPECIFIED)	QUALITY SYMBOLS	DESCRIPTION	REV
4 PLACES ± 0.15	▷=0	ENTER DESCRIPTION	D
3 PLACES ± 0.10	▽=0	DESCRIPTION	5
2 PLACES ± 0.05		DRWN:JL IU13	
1 PLACE ± 0.02		CHKD:TEDDY	
ANGULAR ± 0.10		APPR:TKAN	
		2005/01/18	
		2005/01/18	
		2005/01/20	

MATERIAL NO.	DOCUMENT NO.	SHEET NO.
887683530	SD887683530	1 OF 2
DRAFT WHERE APPLICABLE MUST REMAIN WITHIN DIMENSIONS		
THIS DRAWING CONTAINS INFORMATION THAT IS PROPRIETARY TO MOLEX INCORPORATED AND SHOULD NOT BE USED WITHOUT WRITTEN PERMISSION		
MOLEX MOLEX INCORPORATED		



SHIELD	SHIELD	OVERALL SHIELD	GROUND
PIN 19	PIN 16	WHITE	HOT PLUG DETECT
PIN 18	PIN 14	YELLOW	POWER +5V
PIN 17	PIN 15	ORANGE	GROUND(+5V&DDC)
PIN 16	PIN 7	RED	DDC DATA(SDA)
PIN 15	PIN 6	VIOLET	DDC CLOCK(SCL)
PIN 12	PIN 24	WHITE	TMDS CLOCK-
PIN 11	PIN 22	BRAID	TMDS CLOCK SHIELD
PIN 10	PIN 23	BROWN	TMDS CLOCK+
PIN 9	PIN 17	WHITE	TMDS DATA 0-
PIN 8	PIN 19	BRAID	TMDS DATA 0 SHIELD
PIN 7	PIN 18	BLUE	TMDS DATA 0+
PIN 6	PIN 9	WHITE	TMDS DATA 1-
PIN 5	PIN 11	BRAID	TMDS DATA 1 SHIELD
PIN 4	PIN 10	GREEN	TMDS DATA 1+
PIN 3	PIN 1	WHITE	TMDS DATA 2-
PIN 2	PIN 3	BRAID	TMDS DATA 2 SHIELD
PIN 1	PIN 2	RED	TMDS DATA 2+
HDMI	DVI-D	COLOR	CABLE FUNCTION

ITEM	DESCRIPTION	SCALE	DESIGN UNITS	THIRD ANGLE PROJECTION	QTY.
G	HDMI METAL CAN 501840118	---	METRIC		1
F	HDMI HOUSING ASSY' 5011850001	---	METRIC		1
E	DVI THUMB SCREW 887806077	---	METRIC		2
D	PCB 887899569/887899570	---	METRIC		1
C	ONE BODY CAN 887899392	---	METRIC		1
B	DVI-D SINGLE CHANNEL G/F CONNECTOR 743230001	---	METRIC		1
A	DVI SINGLE LINK CABLE (SEE TABLE)	---	METRIC		1

QUALITY SYMBOLS	GENERAL TOLERANCES (UNLESS SPECIFIED)	MM ONLY	DATE	TITLE
	4 PLACES ±---	DRAWN BY	2005/01/18	#28 HDMI TO DVI 5M CABLE ASSY
	3 PLACES ±---	JLIU13	2005/01/18	
	2 PLACES ±---	CHECKED BY	2005/01/18	
	1 PLACE ±---	TEDDY	2005/01/18	
	ANGULAR ±---°	APPROVED BY	2005/01/18	
	DRAFT WHERE APPLICABLE MUST REMAIN WITHIN DIMENSIONS	BORON	2005/01/18	
		MATERIAL NO.	887683530	
		DOCUMENT NO.	SD887683530	
		SHEET NO.	2 OF 2	