

PLEASE CHECK WWW.MOLEX.COM FOR LATEST PART INFORMATION

Part Number: [0780790351](#)
Status: **Active**
Description: 1.00mm (.039") Pitch DDR3 DIMM Socket, Vertical, Through Hole, with Beveled Metal Pins, Green Housing and Off-White Latches, 0.38µm (15µ") Gold (Au) Plating, 2.67mm(.105") Solder tail, 240 Circuits, Lead free

Documents:

[Drawing \(PDF\)](#) [RoHS Certificate of Compliance \(PDF\)](#)
[Product Specification PS-78079-001 \(PDF\)](#)

Agency Certification

CSA LR19980
 UL E29179

General

Product Family Memory Module Sockets
 Series [78079](#)
 Component Type Socket
 JEDEC Outline MO-269
 Product Name DDR3 DIMM

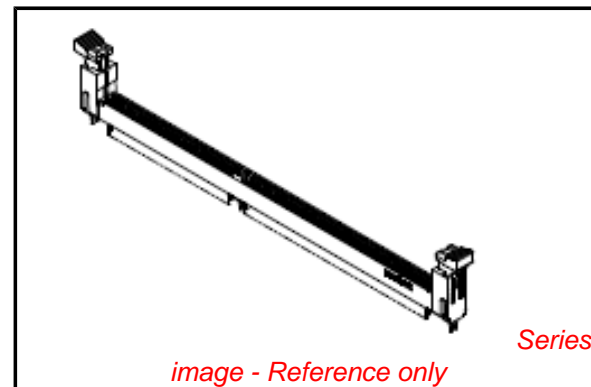
Physical

Circuits (Loaded) 240
 Circuits (maximum) 240
 Color - Resin Green, Natural
 Durability (mating cycles max) 25
 Entry Angle Vertical
 Flammability 94V-0
 Keying to Mating Part Yes
 Material - Metal Copper Alloy
 Material - Plating Mating Gold
 Material - Plating Termination Tin
 Material - Resin High Temperature Thermoplastic
 PC Tail Length (in) 0.105 In
 PC Tail Length (mm) 2.67 mm
 PCB Locator Yes
 PCB Retention Yes
 PCB Thickness Recommended (in) 0.062 In
 PCB Thickness Recommended (mm) 1.57 mm
 Packaging Type Tray
 Pitch - Mating Interface (in) 0.039 In
 Pitch - Mating Interface (mm) 1.00 mm
 Pitch - Term. Interface (in) 0.039 In
 Pitch - Term. Interface (mm) 1.00 mm
 Plating min: Mating (µin) 15
 Plating min: Mating (µm) 0.38
 Plating min: Termination (µin) 100
 Plating min: Termination (µm) 2.54
 Temperature Range - Operating -55°C to +85°C
 Termination Interface: Style Through Hole

Electrical

Current - Maximum per Contact 1A
 Voltage - Maximum 30V AC (RMS)/DC
 Voltage Key Center

Material Info



EU RoHS

**ELV and RoHS
 Compliant**
**REACH SVHC
 Not Reviewed**
**Halogen-Free
 Status
 Not Reviewed**

China RoHS



**Need more information on product
 environmental compliance?**

Email productcompliance@molex.com
 For a multiple part number RoHS Certificate of Compliance, [click here](#)

Please visit the [Contact Us](#) section for any non-product compliance questions.

Search Parts in this Series

[78079Series](#)

Mates With

JEDEC standard 1.27mm modules

Reference - Drawing Numbers

Packaging Specification

Product Specification

Sales Drawing

PK-78079-001

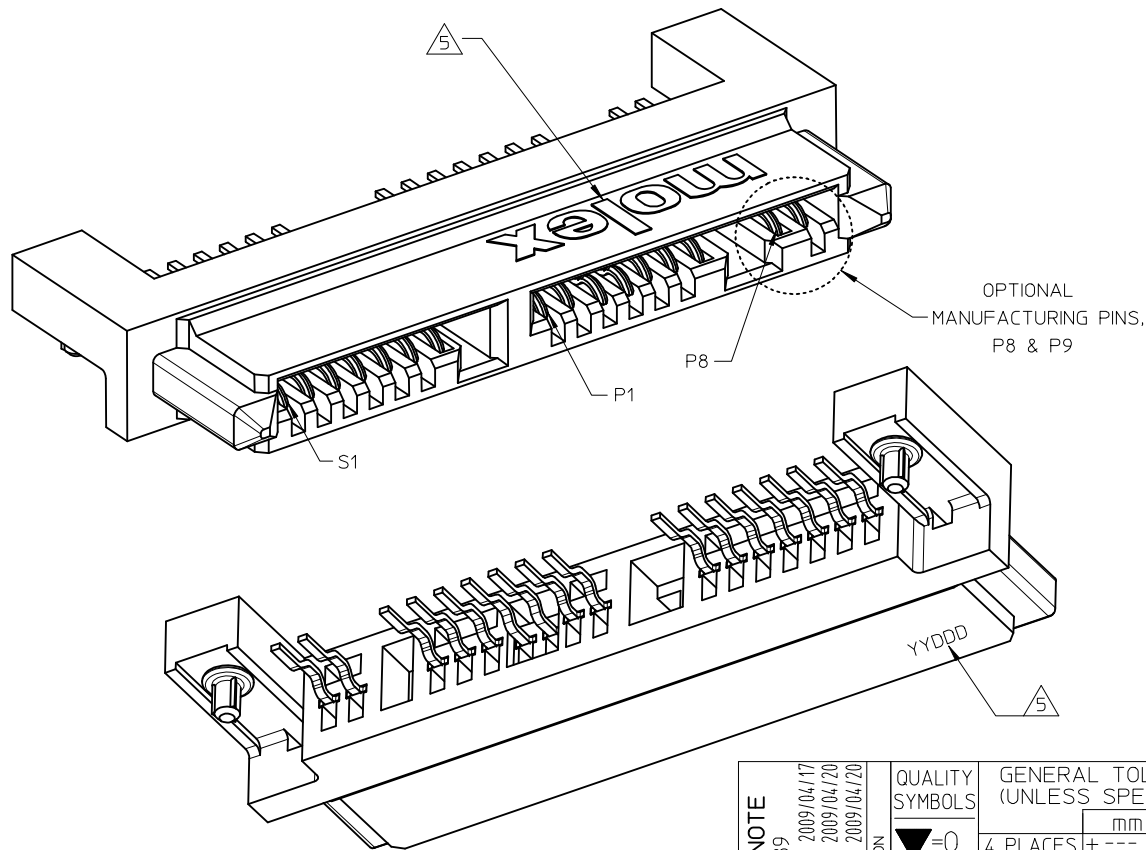
PS-78079-001

SD-78079-001

This document was generated on 05/14/2010

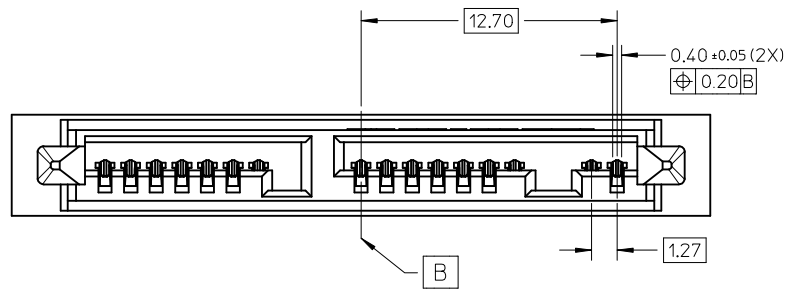
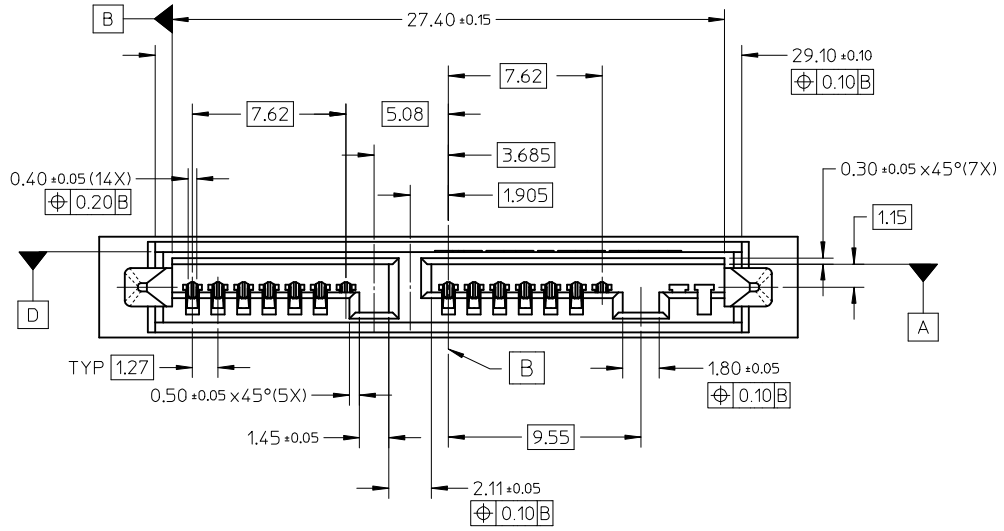
PLEASE CHECK WWW.MOLEX.COM FOR LATEST PART INFORMATION

10	9	8	7	6	5	4	3	2	1
PART NUMBER	TOTAL PINS	DESCRIPTION		HOUSING MATERIAL		PACKAGING		REMARKS	
78109-0001	16	WITH OPTIONAL MANUFACTURING PINS (S1 TO S7 & P1 TO P9)		NYLON (PA) 9T, GLASS FILLED, UL 94V-0, BLACK.		TRAY		WITHOUT CAP	
78109-0012						TAPE AND REEL		WITH CAP	
78109-1001	14	WITHOUT OPTIONAL MANUFACTURING PINS (S1 TO S7 & P1 TO P7)				TRAY		WITHOUT CAP	
78109-1012						TAPE AND REEL		WITH CAP	

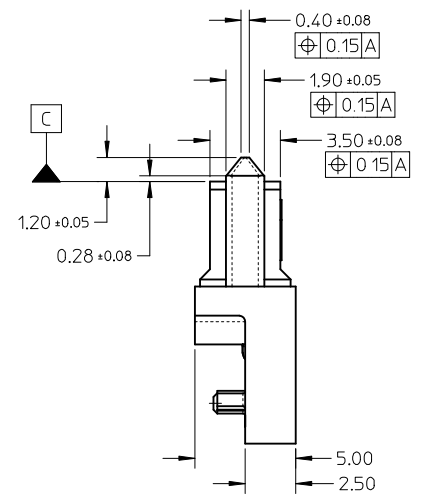
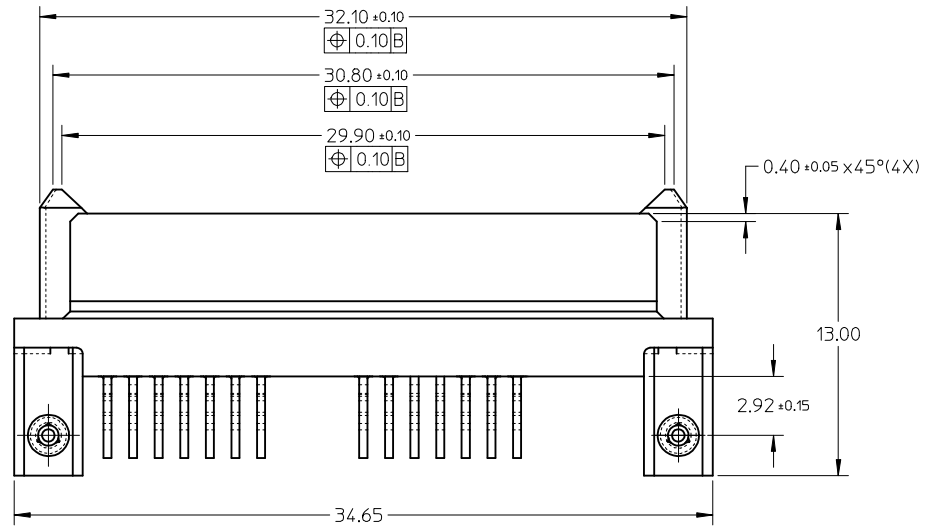


- NOTES:
- MATERIAL : SEE TABLE
TERMINAL/LOCATING PIN : COPPER ALLOY
 - PLATING :
TERMINAL : 0.764μm MIN. SELECTIVE GOLD OVER
1.274μm MIN. NICKEL UNDERPLATE
: 2.544μm MIN. TIN OVER
1.274μm MIN. NICKEL UNDERPLATE
LOCATING PIN : 3.814μm MIN. TIN OVER
2.004μm MIN. NICKEL UNDERPLATE
 - PRODUCT SPECIFICATION : PS-78109-001
 - MATES WITH MICRO SATA PLUG SERIES : 78283
 - MOLEX LOGO LOCATED APPROXIMATELY AS SHOWN
 - DATE CODE LOCATED APPROXIMATELY AS SHOWN
 - PACKAGING : SEE TABLE
 - THIS PRODUCT IS COMPLIANT TO RoHS DIRECTIVE WITH THE FOLLOWING BANNED SUBSTANCES - LEAD, MERCURY, CADMIUM, HEXAVALENT CHROMIUM, POLYBROMINATED BIPHENYLS AND POLYBROMINATED DIPHENYLS ETHERS.
 - NON FUNCTIONAL CORING MAY VARY.

ADD P/NO. & NOTE EC NO: S2009-0789 DRWN:JTAN02 CHKD:KHLIM APPR:BOKOK	DESCRIPTION 2009/04/17 2009/04/20 2009/04/20	QUALITY SYMBOLS ▽=0 ◻=0	GENERAL TOLERANCES (UNLESS SPECIFIED)		DIMENSION STYLE MM ONLY		SCALE NTS	DESIGN UNITS METRIC	THIRD ANGLE PROJECTION			
				mm	INCH	DRAWN BY YKOH	DATE 2006/06/27	TITLE SERIAL ATA RECEPTACLE 1.8 INCH HDD RIGHT-ANGLE, SMT				
			4 PLACES	± ---	± ---	CHECKED BY SHONG	DATE 2006/07/28	MOLEX INCORPORATED				
			3 PLACES	± ---	± ---	APPROVED BY KCLING	DATE 2006/07/28	MATERIAL NO. SEE TABLE	DOCUMENT NO. SD-78109-001	SHEET NO. 1 OF 6		
2 PLACES	± 0.20	± ---	ANGULAR ± 3 °		DRAFT WHERE APPLICABLE MUST REMAIN WITHIN DIMENSIONS							
1 PLACE	± ---	± ---			THIS DRAWING CONTAINS INFORMATION THAT IS PROPRIETARY TO MOLEX INCORPORATED AND SHOULD NOT BE USED WITHOUT WRITTEN PERMISSION							



78109-0001

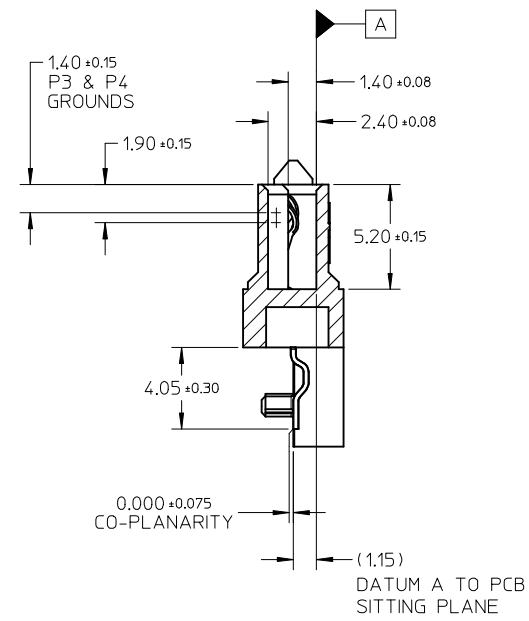
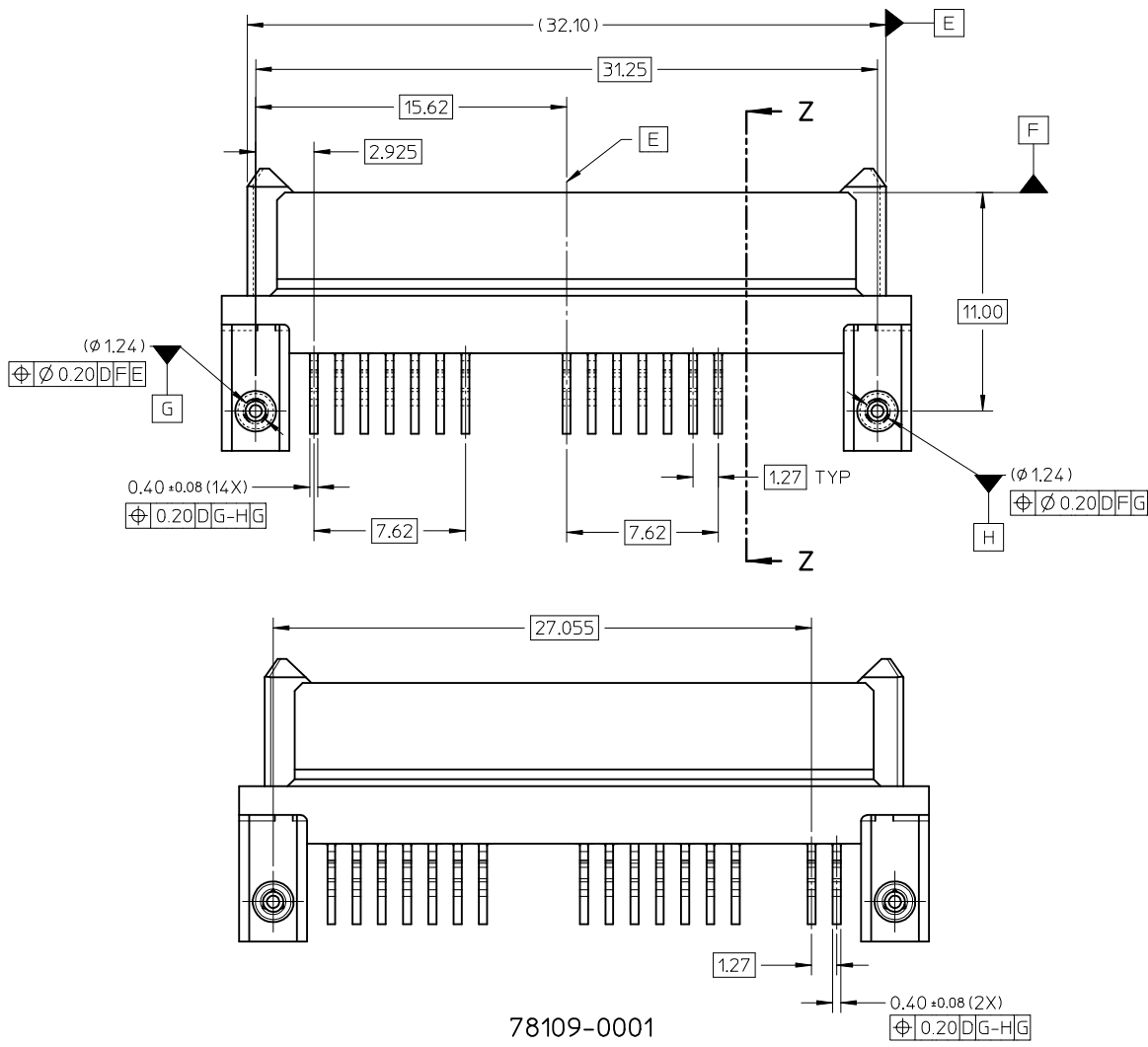


ADD P/NO. & NOTE EC NO: S2009-0789 DRWN: JTAN02 CHKD: KHLIM APPR: BOKOK	2009/04/17	DESCRIPTION	QUALITY SYMBOLS
	2009/04/20		▽=0
	2009/04/20		∠=0

GENERAL TOLERANCES (UNLESS SPECIFIED)	mm	INCH	
	4 PLACES	± ---	± ---
	3 PLACES	± ---	± ---
	2 PLACES	± 0.20	± ---
	1 PLACE	± ---	± ---
ANGULAR ± 3 °			
DRAFT WHERE APPLICABLE MUST REMAIN WITHIN DIMENSIONS			

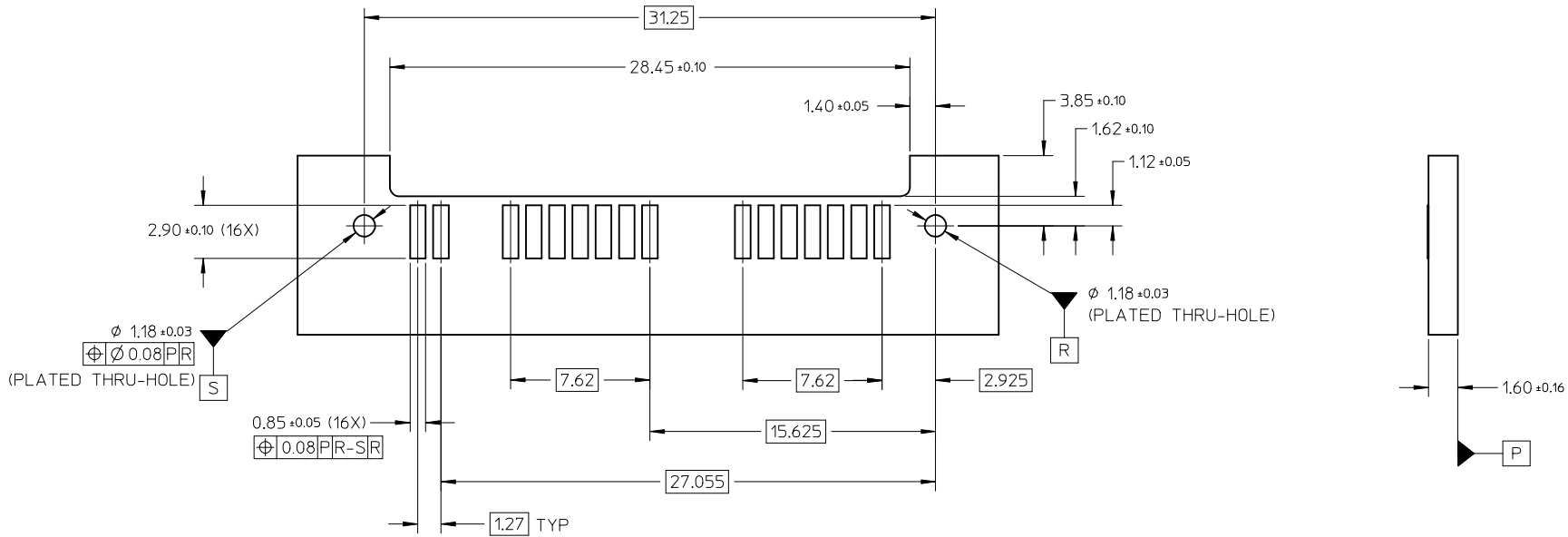
DIMENSION STYLE		SCALE	DESIGN UNITS	THIRD ANGLE PROJECTION
MM ONLY		NTS	METRIC	
DRAWN BY	DATE	TITLE		
YKOH	2006/06/27	SERIAL ATA RECEPTACLE		
CHECKED BY	DATE	1.8 INCH HDD		
SHONG	2006/07/28	RIGHT-ANGLE, SMT		
APPROVED BY	DATE	MOLEX INCORPORATED		
KCLING	2006/07/28	MOLEX INCORPORATED		
MATERIAL NO.	DOCUMENT NO.	SHEET NO.		
SEE TABLE	SD-78109-001	2 OF 6		

SIZE	THIS DRAWING CONTAINS INFORMATION THAT IS PROPRIETARY TO MOLEX INCORPORATED AND SHOULD NOT BE USED WITHOUT WRITTEN PERMISSION		
A3			



78109-0001

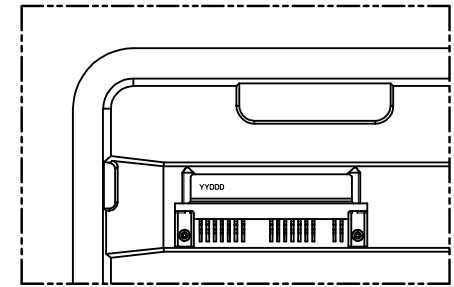
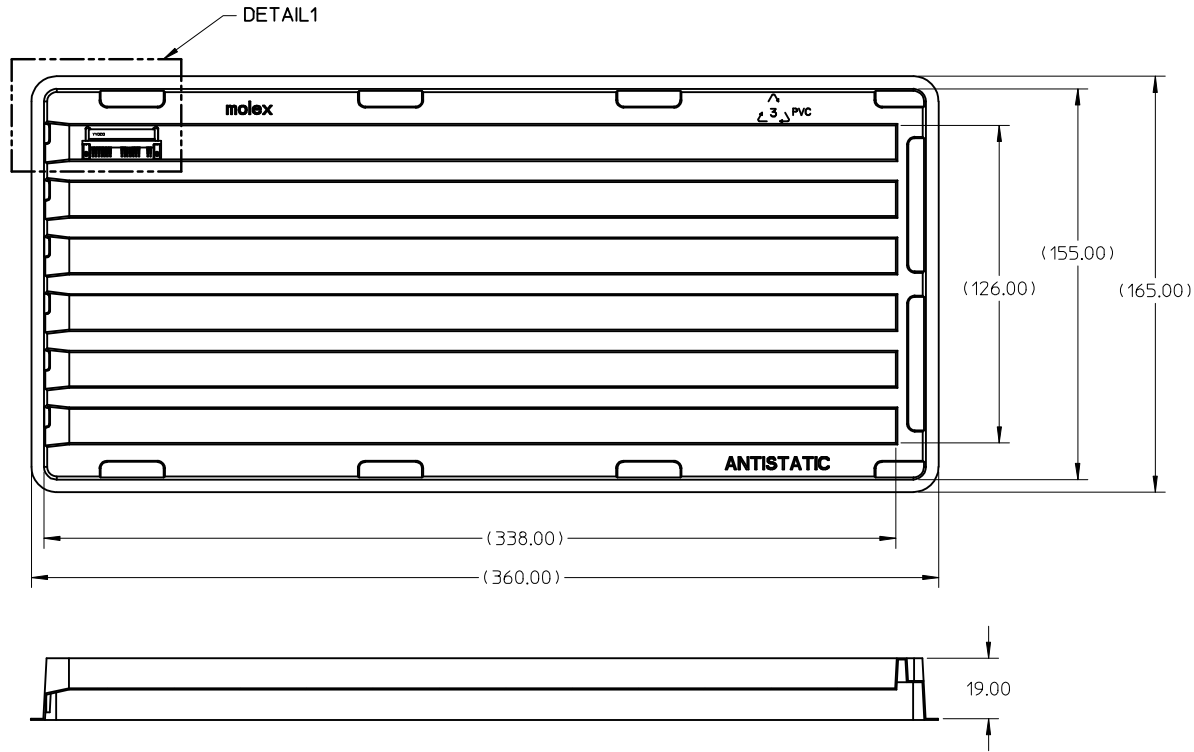
ADD P/NO. & NOTE EC NO: S2009-0789 2009/04/17 DRWN: JIAN02 2009/04/20 CHKD: KHLIM 2009/04/20 APPR: BOKOK 2009/04/20	QUALITY SYMBOLS ▽=0 ◻=0	GENERAL TOLERANCES (UNLESS SPECIFIED)		DIMENSION STYLE MM ONLY	SCALE NTS	DESIGN UNITS METRIC	THIRD ANGLE PROJECTION	
			mm	INCH	DRAWN BY: YKOH DATE: 2006/06/27	TITLE: SERIAL ATA RECEPTACLE 1.8 INCH HDD RIGHT-ANGLE, SMT		
		4 PLACES ± --- ± --- 3 PLACES ± --- ± --- 2 PLACES ± 0.20 ± --- 1 PLACE ± --- ± ---	ANGULAR ± 3 °		CHECKED BY: SHONG DATE: 2006/07/28	MOLEX INCORPORATED		
		DRAFT WHERE APPLICABLE MUST REMAIN WITHIN DIMENSIONS		MATERIAL NO. SEE TABLE	APPROVED BY: KCLING DATE: 2006/07/28	DOCUMENT NO. SD-78109-001	SHEET NO. 3 OF 6	



RECOMMENDED PCB LAYOUT

ADD P/NO. & NOTE EC NO: S2009-0789 DRWN: JTAN02 2009/04/17 CHKD: KHLIM 2009/04/20 APPR: BOKOK 2009/04/20	QUALITY SYMBOLS ▽=0 ◻=0	GENERAL TOLERANCES (UNLESS SPECIFIED) mm INCH 4 PLACES ± --- ± --- 3 PLACES ± --- ± --- 2 PLACES ± 0.20 ± --- 1 PLACE ± --- ± --- ANGULAR ± 3 °	DIMENSION STYLE MM ONLY	SCALE NTS	DESIGN UNITS METRIC	THIRD ANGLE PROJECTION
	DRAWN BY YKOH	DATE 2006/06/27	TITLE SERIAL ATA RECEPTACLE 1.8 INCH HDD RIGHT-ANGLE, SMT			
	CHECKED BY SHONG	DATE 2006/07/28	MOLEX INCORPORATED			
	APPROVED BY KCLING	DATE 2006/07/28	MATERIAL NO. SEE TABLE	DOCUMENT NO. SD-78109-001	SHEET NO. 4 OF 6	
DRAFT WHERE APPLICABLE MUST REMAIN WITHIN DIMENSIONS	SIZE A3	THIS DRAWING CONTAINS INFORMATION THAT IS PROPRIETARY TO MOLEX INCORPORATED AND SHOULD NOT BE USED WITHOUT WRITTEN PERMISSION				

PACKAGING INFORMATION : TRAY



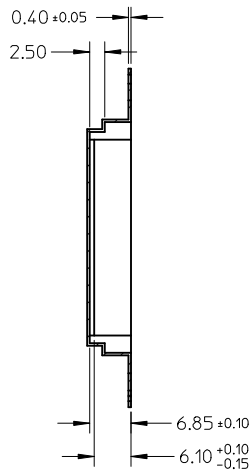
DETAIL1

NOTES:

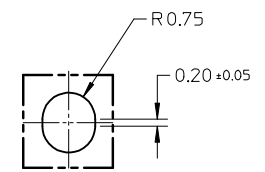
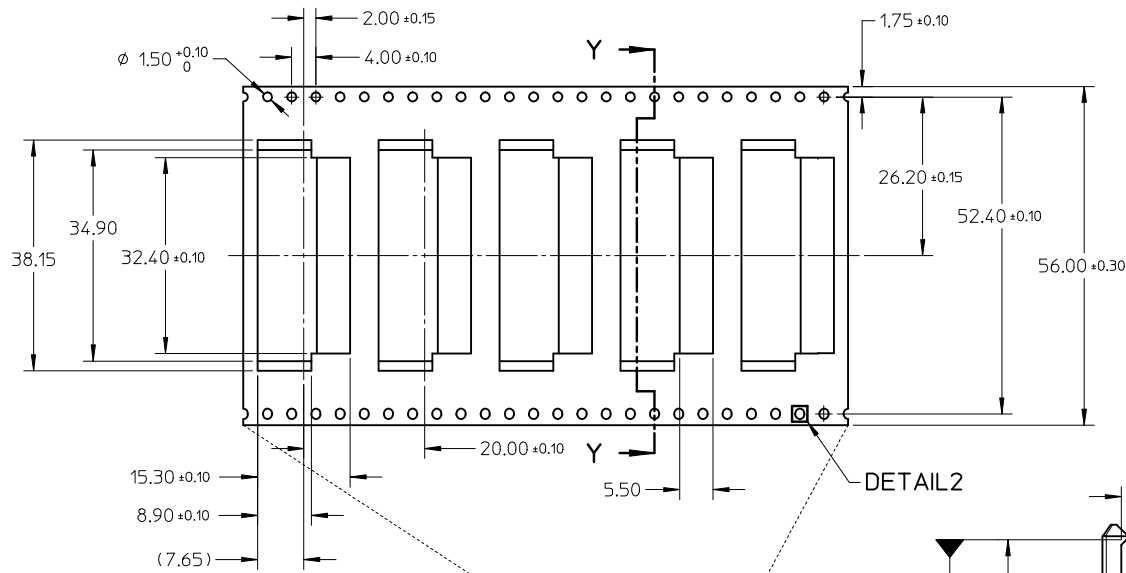
1. PACKAGING QUANTITY : 54 PCS PER TRAY
2. MATERIAL : PVC - CLEAR, ANTISTATIC
0.70MM THICK (PRE-FORMED)

ADD P/NO. & NOTE EC NO: S2009-0789 DRWN:JTAN02 CHKD:KHLIM APPR:BOKOK	2009/04/17 2009/04/20 2009/04/20	DESCRIPTION REV	QUALITY SYMBOLS ▽=0 ◻=0	GENERAL TOLERANCES (UNLESS SPECIFIED)		DIMENSION STYLE MM ONLY		SCALE NTS	DESIGN UNITS METRIC	THIRD ANGLE PROJECTION				
					mm	INCH	DRAWN BY	DATE	TITLE					
				4 PLACES	± ---	± ---	YKOH	2006/06/27	SERIAL ATA RECEPTACLE 1.8 INCH HDD RIGHT-ANGLE, SMT					
				3 PLACES	± ---	± ---	CHECKED BY	DATE						
2 PLACES	± 0.20	± ---	SHONG	2006/07/28	MOLEX INCORPORATED									
1 PLACE	± ---	± ---	APPROVED BY	DATE										
ANGULAR ± 3 °				KCLING	2006/07/28	MATERIAL NO.		DOCUMENT NO.		SHEET NO.				
DRAFT WHERE APPLICABLE MUST REMAIN WITHIN DIMENSIONS				SEE TABLE		SD-78109-001		5 OF 6						
				SIZE A3		THIS DRAWING CONTAINS INFORMATION THAT IS PROPRIETARY TO MOLEX INCORPORATED AND SHOULD NOT BE USED WITHOUT WRITTEN PERMISSION								

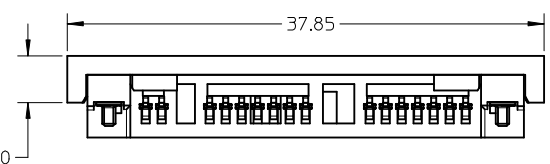
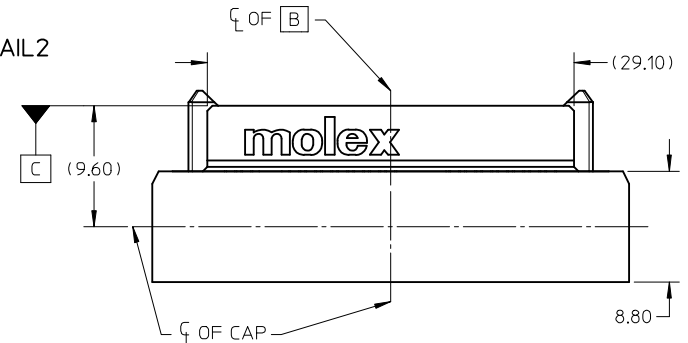
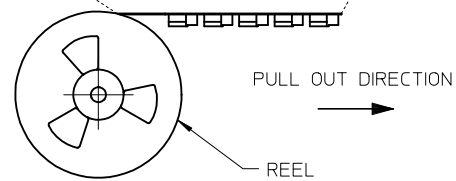
PACKAGING INFORMATION : TAPE & REEL



SECTION Y-Y

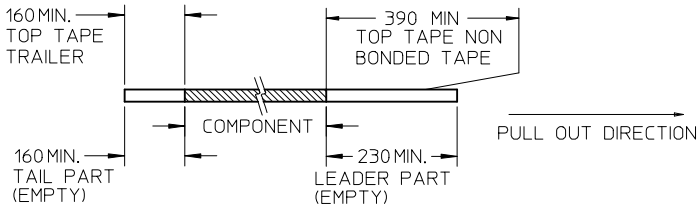


DETAIL 2

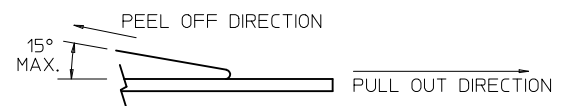


NOTES:

1. LEADER AND TRAILER TAPE



2. PEELING OFF FORCE OF THE TOP TAPE: 20 - 80gf.
(PEELING DIRECTION AS SHOWN IN FOLLOWING FIGURE)



- 3. TAPE AND REEL SPECIFICATION IS AS PER EIA-481.
- 4. TAPE AND REEL QUANTITY : 480 PCS/ REEL.
- 5. THE TAPE IS TREATED FOR ANTI-STATIC.

ADD P/NO. & NOTE EC NO: S2009-0789 DRWN:JTAN02 CHKD:KHLIM APPR:BOKOK	2009/04/17 2009/04/20 2009/04/20	DESCRIPTION A	QUALITY SYMBOLS	GENERAL TOLERANCES (UNLESS SPECIFIED)	DIMENSION STYLE	SCALE	DESIGN UNITS	THIRD ANGLE PROJECTION		
			▼=0 ◻=0	mm INCH 4 PLACES ± --- ± --- 3 PLACES ± --- ± --- 2 PLACES ± 0.20 ± --- 1 PLACE ± --- ± --- ANGULAR ± 3 °	MM ONLY	NTS	METRIC			
					DRAWN BY	DATE	TITLE			
					CHECKED BY	DATE	SERIAL ATA RECEPTACLE 1.8 INCH HDD RIGHT-ANGLE, SMT			
				APPROVED BY	DATE	MOLEX INCORPORATED				
				MATERIAL NO.		DOCUMENT NO.				
				DRAFT WHERE APPLICABLE MUST REMAIN WITHIN DIMENSIONS		SEE TABLE		SD-78109-001		
				SIZE	THIS DRAWING CONTAINS INFORMATION THAT IS PROPRIETARY TO MOLEX INCORPORATED AND SHOULD NOT BE USED WITHOUT WRITTEN PERMISSION				SHEET NO.	
				A3					6 OF 6	