

**PLEASE CHECK WWW.MOLEX.COM FOR LATEST PART INFORMATION**

**Part Number:** [0675810001](#)  
**Status:** **Active**  
**Overview:** [serial\\_ata\\_products](#)  
**Description:** 1.27mm (.050") Pitch Serial ATA Crimp Terminal for Power Cable Receptacle, 0.76µm (30µ") Gold (Au) Plating, with Reel Direction - Type 1, Lead free

**Documents:**

[3D Model](#) [Product Specification PS-67490-002 \(PDF\)](#)  
[Drawing \(PDF\)](#) [RoHS Certificate of Compliance \(PDF\)](#)

**General**

Product Family	Crimp Terminals
Series	<a href="#">67581</a>
Crimp Quality Equipment	Yes
Overview	<a href="#">serial_ata_products</a>
Product Name	Serial ATA

**Physical**

Durability (mating cycles max)	50
Gender	Female
Material - Metal	Phosphor Bronze
Material - Plating Mating	Gold
Material - Plating Termination	Tin
Packaging Type	Reel
Plating min: Mating (µin)	30
Plating min: Mating (µm)	0.76
Plating min: Termination (µin)	73.82
Plating min: Termination (µm)	1.85
Termination Interface: Style	Crimp or Compression
Wire Insulation Diameter	2.20-1.60mm(0.087-0.063)
Wire Size AWG	18, 20, 22
Wire Size mm <sup>2</sup>	3.79-2.00

**Electrical**

Current - Maximum per Contact	1.5A
Voltage - Maximum	15V DC

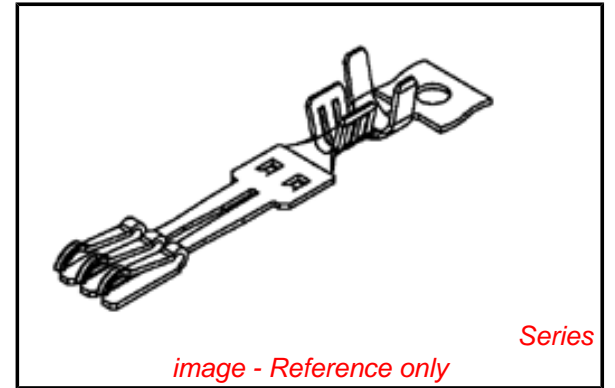
**Solder Process Data**

Lead-free Process Capability	Wave Capable (TH only)
------------------------------	------------------------

**Material Info**

**Reference - Drawing Numbers**

Packaging Specification	PK-67581-001
Product Specification	PS-67490-002
Sales Drawing	SD-67581-001



*image - Reference only*

**EU RoHS**

**ELV and RoHS  
Compliant**  
**REACH SVHC**  
 Not Reviewed  
**Halogen-Free  
Status**

**China RoHS**



**Need more information on product  
environmental compliance?**

Email [productcompliance@molex.com](mailto:productcompliance@molex.com)  
 For a multiple part number RoHS Certificate of Compliance, [click here](#)

Please visit the [Contact Us](#) section for any non-product compliance questions.

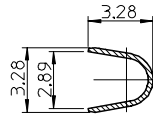
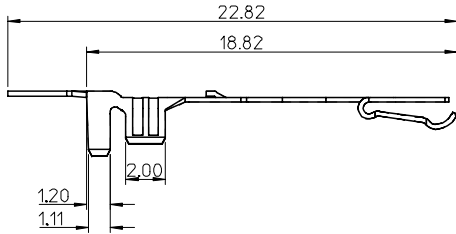
**Search Parts in this Series**

[67581Series](#)

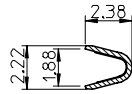
**Use With**

[67582 Crimp Housing](#)

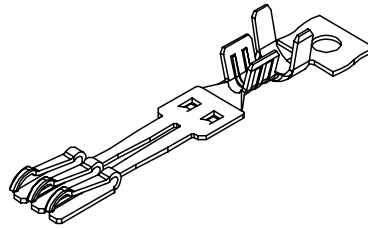
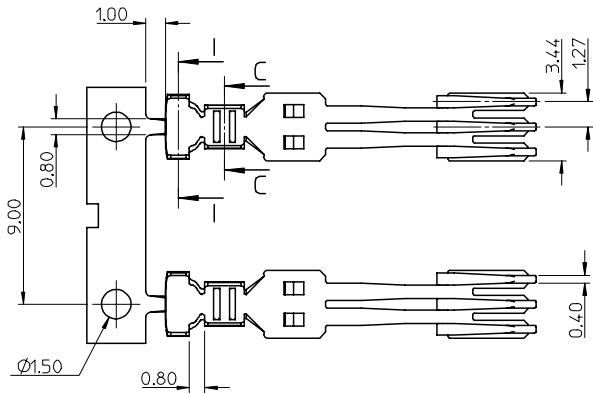
10 9 8 7 6 5 4 3 2 1



Section I-I

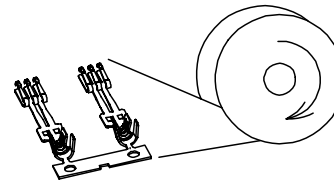


Section C-C

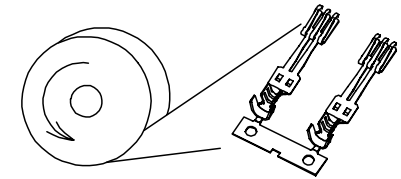


NOTES:

- MATERIAL :  
PHOSPHOR BRONZE, THICKNESS = 0.25mm
- PLATING :  
CONTACT AREA: (A) GOLD FLASH  
(B) GOLD PLATED 0.76 MICRON.  
(C) GOLD PLATED 0.38 MICRON.  
CRIMPING AREA: TIN PLATED 1.875 MICRON MINIMUM.  
UNDER PLATE: NICKELPLATED 1.25 MICRON MINIMUM.
- TO BE USED WITH 67582, 5 SETS TERMINAL PER HOUSING
- PRODUCT SPECIFICATION REFER TO PS-67490-002
- PACKAGE SPECIFICATION REFER TO PK-67581-001
- CRIMPING SPECIFICATION REFER TO CS-67581-001
- RECOMMEND WIRE SIZE: 18/20/22AWG
- PRODUCT COMPLIANT TO RoHS DIRECTIVE 2002/95/EC AND ELV DIRECTIVE 2000/53/EC.



BEFORE CRIMPING  
TYPE I



BEFORE CRIMPING  
TYPE II

P/N	CONTACT AREA GOLD PLATING	TYPE
67581-0000	GOLD FLASH	TYPE I
67581-0001	0.76 MICRON GOLD PLATING	
67581-0002	0.38 MICRON GOLD PLATING	
67581-0010	GOLD FLASH	TYPE II
67581-0011	0.76 MICRON GOLD PLATING	
67581-0012	0.38 MICRON GOLD PLATING	

<p>NEW RELEASE</p> <p>EC NO: SH2007-0312</p> <p>DRWN: BCHENZ6 2006/11/01</p> <p>CHKD: JTIAN 2006/11/03</p> <p>APPR: JNCHEN 2006/11/07</p>	<p>QUALITY SYMBOLS</p> <p>▽=0</p> <p>▽C=0</p>	<p>GENERAL TOLERANCES (UNLESS SPECIFIED)</p>		<p>DIMENSION STYLE</p> <p>MM ONLY</p>		<p>SCALE</p> <p>4:1</p>	<p>DESIGN UNITS</p> <p>METRIC</p>	<p>THIRD ANGLE PROJECTION</p>																
		<table border="1"> <thead> <tr> <th></th> <th>mm</th> <th>INCH</th> </tr> </thead> <tbody> <tr> <td>4 PLACES</td> <td>± ---</td> <td>± ---</td> </tr> <tr> <td>3 PLACES</td> <td>± ---</td> <td>± ---</td> </tr> <tr> <td>2 PLACES</td> <td>± 0.25</td> <td>± .010</td> </tr> <tr> <td>1 PLACE</td> <td>± 0.25</td> <td>± .010</td> </tr> </tbody> </table>			mm	INCH	4 PLACES	± ---	± ---	3 PLACES	± ---	± ---	2 PLACES	± 0.25	± .010	1 PLACE	± 0.25	± .010	<p>DRAWN BY DATE</p> <p>GRATE MA 2003/08/15</p>		<p>TITLE</p> <p>TERMINAL FOR SATA POWER CABLE RECEPTACLE</p>			
			mm	INCH																				
		4 PLACES	± ---	± ---																				
3 PLACES	± ---	± ---																						
2 PLACES	± 0.25	± .010																						
1 PLACE	± 0.25	± .010																						
<p>ANGULAR ± 3 °</p>		<p>CHECKED BY DATE</p> <p>YA JUN 2003/08/15</p>		<p>APPROVED BY DATE</p> <p>SAM 2003/08/15</p>																				
<p>DRAFT WHERE APPLICABLE MUST REMAIN WITHIN DIMENSIONS</p>		<p>MATERIAL NO.</p> <p>SEE TABLE</p>		<p>DOCUMENT NO.</p> <p>SD-67581-001</p>		<p>SHEET NO.</p> <p>1 OF 1</p>																		

9 8 7 6 5 4 3 2 1