

PLEASE CHECK WWW.MOLEX.COM FOR LATEST PART INFORMATION

Part Number: [0191470090](#)
Status: **Active**
Description: VersaKrimp™ Block Spade Terminal for 10-12 AWG Wire

Documents:

[Drawing \(PDF\)](#) [RoHS Certificate of Compliance \(PDF\)](#)

Agency Certification

CSA LR18689
 UL E32244

General

Product Family Ring and Spade Terminals
 Series [19147](#)
 Crimp Quality Equipment Yes
 Mil-Spec N/A
 Product Name VersaKrimp™
 Type Spade Block

Physical

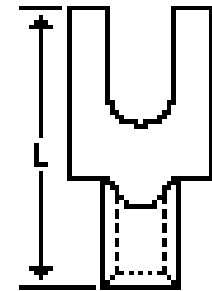
Barrel Type Closed - Brazed
 Insulation None
 Material - Plating Mating Tin
 Packaging Type Bag
 Plating min: Mating (µin) 100
 Plating min: Mating (µm) 2.5
 Plating min: Termination (µin) 100
 Plating min: Termination (µm) 2.5
 Stud Size 10 (M5)
 Termination Interface: Style Crimp or Compression
 Wire Size AWG 10, 12
 Wire Size mm² 3.30 - 5.00

Material Info

Old Part Number C-3105-10

Reference - Drawing Numbers

Sales Drawing CCD30301



*Series
 image - Reference only*

EU RoHS

**ELV and RoHS
 Compliant**
**REACH SVHC
 Contains SVHC: No**
**Halogen-Free
 Status**

China RoHS



Not Reviewed

**Need more information on product
 environmental compliance?**

Email productcompliance@molex.com
 For a multiple part number RoHS Certificate of
 Compliance, [click here](#)

Please visit the [Contact Us](#) section for any
 non-product compliance questions.

Search Parts in this Series

[19147Series](#)

Application Tooling | [FAQ](#)

*Tooling specifications and manuals are
 found by selecting the products below.
 Crimp Height Specifications are then
 contained in the Application Tooling
 Specification document.*

Global

| Description | Product # |
|--|----------------------------|
| Hand Crimp Tool | 0640030100 |
| Crimp Head for the AT-200™ Pneumatic Hand Tool | 0640070100 |

NOTES:

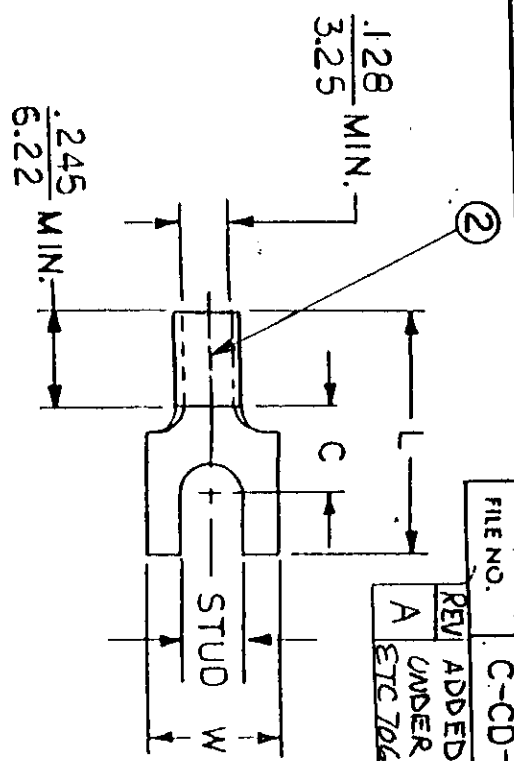
- ① MAT'L: COPPER (STOCK TRN. $\frac{.040}{.102}$)
PLATING: ELECTRO-FIN (.0003 MIN.)
- ② BRAZED SEAM

STUD SIZES: ($\pm .005$)

- 02 = .094
- 04 = .119
- 06 = .146
- 08 = .173
- 10 = .198
- 14 = .265
- 56 = .328
- 38 = .390

"UL" LISTING #E32244
"CSA" LISTING #18689

ALL DIMENSIONS = $\frac{\text{INCHES}}{\text{MM}}$



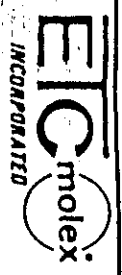
FILE NO. C-CD-303-01

| REV | ADDED 08, 10 TO CHART |
|-----|--|
| A | UNDER PART# 3105 ETC 70688-1/31- EDB |

WIRE SIZE: 12-10 AWG
40-60 MM²

| PART NUMBER | "W" ±.010 | "C" MIN. | "L" MAX. | AVAILABLE STUD SIZES |
|-------------|---------------------|---------------------|-----------------------|----------------------|
| C-3102 | $\frac{.415}{.41}$ | $\frac{.305}{.275}$ | $\frac{.784}{.19.91}$ | 08 |
| C-3105 | $\frac{.520}{8.13}$ | $\frac{.505}{7.75}$ | $\frac{.784}{.19.91}$ | 06, 08, 10 |

| | | | | | |
|---|-----|-----------|--------------|----------|-----------------------|
| DIMENSIONAL TOLERANCES UNLESS OTHERWISE SPECIFIED | | REFERENCE | SCALE: NTS | DATE | TITLE: |
| FRAC | DEC | ANG | DRWN. BY: JJ | 11-28-84 | SPADE TONGUE TERMINAL |
| | | | CHKD. BY: GZ | 11-30-84 | VERSAKRIMP 300-SERIES |
| | | | APPRD. BY: | | |



DWG. NO. A CUSTOMER DWG.