

# Customer Information Sheet

DRAWING No.: M80-28300XX & M80-28400XX SHT 2 OF 2

IF IN DOUBT - ASK

©

NOT TO SCALE

THIRD ANGLE PROJECTION

ALL DIMENSIONS IN mm

## SPECIFICATION:

MATERIAL:  
BERYLLIUM COPPER

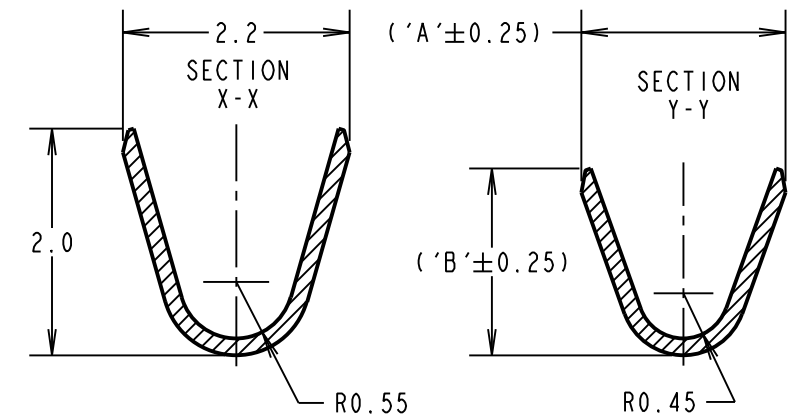
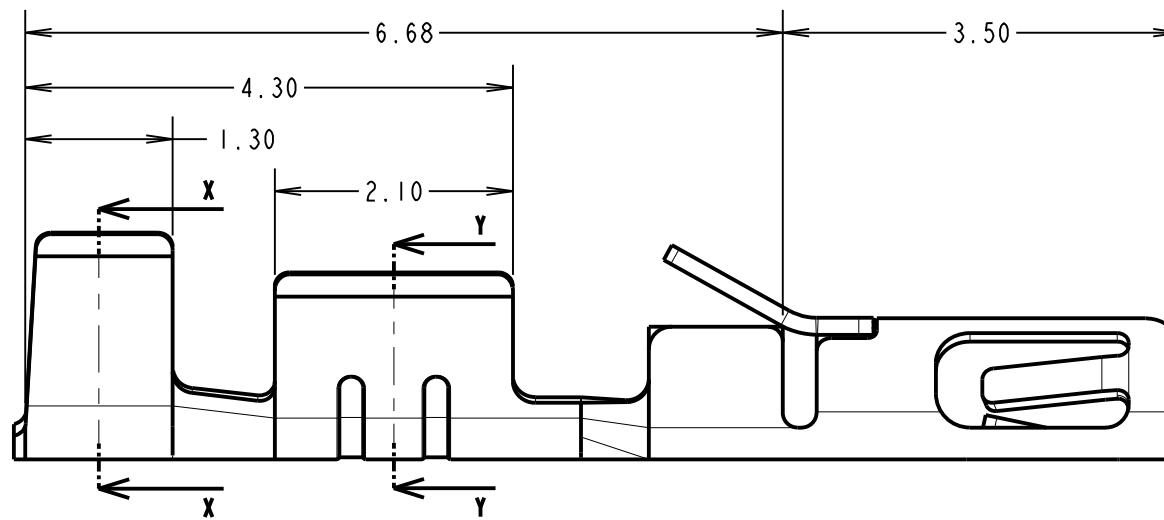
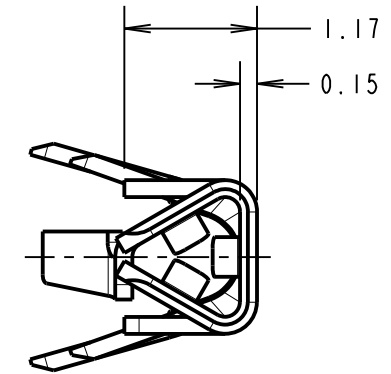
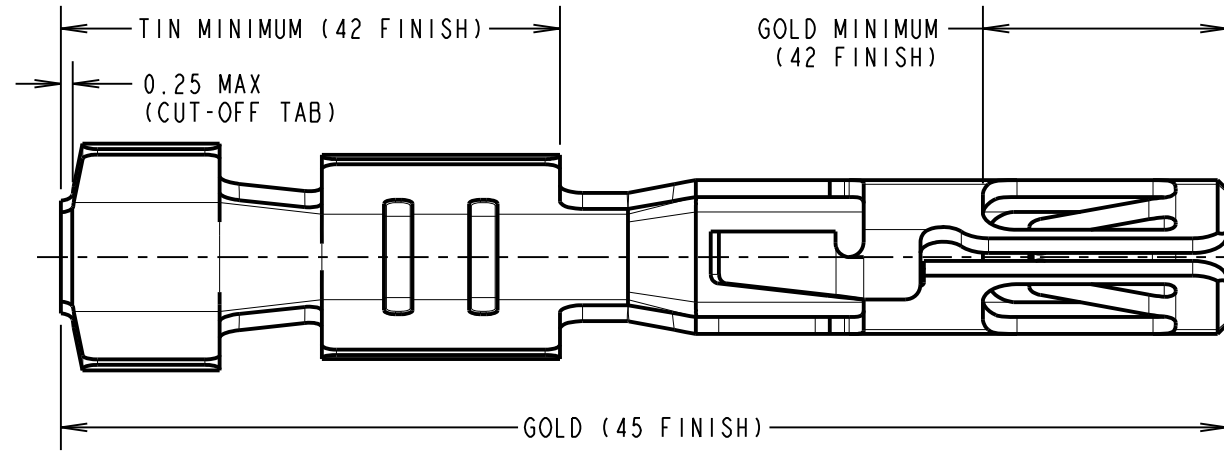
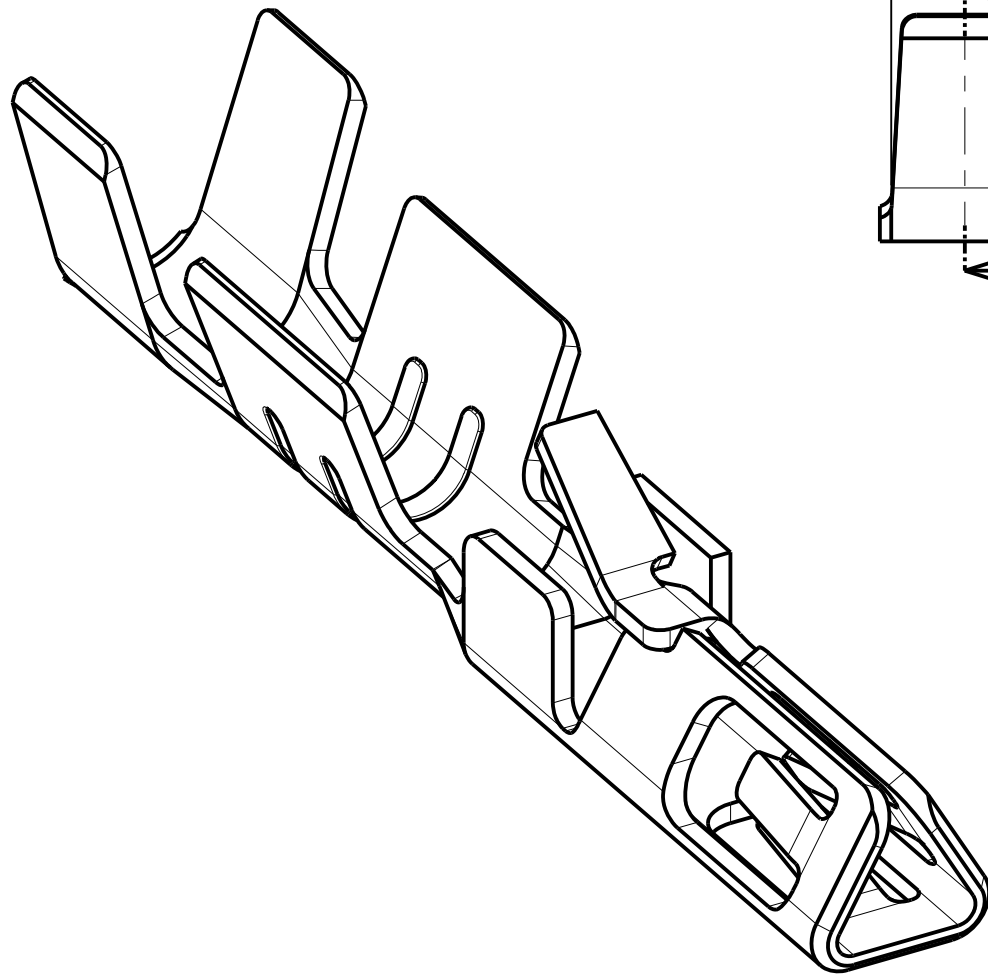
FINISH:  
45 = 0.3µ MIN GOLD, ALL OVER  
42 = 3µ MIN 100% TIN AND 0.3µ MIN GOLD, SELECTIVE PLATE  
ALL FINISHES = NICKEL UNDERPLATE

MECHANICAL:  
INSERTION FORCE = 2.8N MAX, 1.0N MIN  
WITHDRAWAL FORCE = 1.8N MAX, 0.2N MIN  
DURABILITY = 400 OPERATIONS

ENVIRONMENTAL:  
OPERATING TEMPERATURE = -55°C TO +125°C

PACKING:  
LOOSE, 100/BAG ONE OR MORE BAGS PER BOX

FOR COMPLETE CONNECTOR SPECIFICATION, SEE COMPONENT SPECIFICATION C040XX (LATEST ISSUE)



### NOTES:

- TO BE USED WITH THE FOLLOWING FEMALE HOUSING:  
M80-454XX98 = HOUSING ONLY  
M80-455XX98 = HOUSING + SLOTTED JACKSCREW  
M80-456XX98 = HOUSING + HEX SOCKET JACKSCREW  
M80-457XX98 = HOUSING + REVERSE FIX JACKSCREW  
M80-458XX98 = HOUSING + GUIDE AND BOARD MOUNT
- SUITABLE FOR PTFE INSULATED EQUIPMENT WIRE TO BS 3G 210 TYPE A, WIRE 22-28 AWG, WIRE INSULATION  $\varnothing$  0.6mm- $\varnothing$  1.1mm.
- STRIP WIRE BY 2.5-3.0mm FOR CRIMPING.
- CRIMP SUITABLE FOR PROCESSING WITH HAND CRIMP TOOL Z80-255.
- FOR INSTRUCTIONS ON HAND CRIMP TOOL Z80-255, SEE INSTRUCTION SHEET IS-27.
- CONTACTS ARE AVAILABLE ON REELS, PART NUMBER M80-25300XX FOR 24-22 AWG WIRE AND M80-25400XX FOR 28-26 AWG WIRE, SUITABLE FOR PROCESSING WITH LEFT SIDE FEED CRIMPING PRESS. CONTACT [datamate@harwin.com](mailto:datamate@harwin.com) FOR DETAILS.

PART No.	DIMENSION	
	'A'	'B'
M80-28300XX	1.80	1.65
M80-28400XX	1.34	1.00

ORDER CODE: **M80-XXX00XX**

WIRE SIZE: \_\_\_\_\_  
 283 = 24-22 AWG (0.22-0.34mm<sup>2</sup>)  
 284 = 28-26 AWG (0.08-0.12mm<sup>2</sup>)

FINISH: \_\_\_\_\_  
 45 = GOLD, ALL OVER  
 42 = 100% TIN & GOLD, SELECTIVE

SM	4	03.08.10	10892
NAME	ISS.	DATE	C/NOTE
APPROVED: S. MCCULLAGH			
CHECKED: R. ADDE			
DRAWN: B. M. KENT			
CUSTOMER REF.:			
ASSEMBLY DRG:			

## HARWIN

HARWIN USA  
TEL: 603 893 5376  
FAX: 603 893 5396  
[mis@harwin.com](mailto:mis@harwin.com)

HARWIN Europe (UK)  
TEL: 023 9231 4545  
FAX: 023 9231 4590  
[mis@harwin.co.uk](mailto:mis@harwin.co.uk)

HARWIN Asia  
TEL: +65 6 779 4909  
FAX: +65 6 779 3868  
[mis@harwin.com.sg](mailto:mis@harwin.com.sg)

THIS DRAWING AND ANY INFORMATION OR DESCRIPTIVE MATTER SET OUT HEREON ARE CONFIDENTIAL AND COPYRIGHT PROPERTY OF THE HARWIN GROUP AND MUST NOT BE DISCLOSED, LOANED, COPIED OR USED FOR MANUFACTURING, TENDERING OR FOR ANY OTHER PURPOSE WITHOUT THEIR WRITTEN PERMISSION.

TOLERANCES  
 X. = ±1mm  
 X.X = ±0.25mm  
 X.XX = ±0.10mm  
 X.XXX = ±0.01mm  
 ANGLES = ±5°  
 UNLESS STATED

MATERIAL:  
SEE ABOVE

FINISH: SEE ABOVE

S/AREA: mm<sup>2</sup>

TITLE: DATAMATE TRIO-TEK FEMALE CRIMP CONTACT LOOSE 24-22 AWG & 28-26 AWG

DRAWING NUMBER: **M80-28300XX & M80-28400XX**

SHT 2 OF 2