

**PLEASE CHECK WWW.MOLEX.COM FOR LATEST PART INFORMATION**

**Part Number:** [0015801221](#)

**Status:** **Active**

**Overview:** [cgrid\\_sl\\_products](#)

**Description:** 2.54mm (.100") Pitch C-Grid® Header, Through Hole without Peg, Dual Row, Vertical, Shrouded, High Temperature, 22 Circuits, 0.76µm (30µ") Gold, (Au) Selective Plating, Tin (Sn) PC Tail Plating, 3.81mm (.150") Inside Shroud to End Circuit Spacing

**Documents:**

[3D Model](#)

[Packaging Specification \(PDF\)](#)

[Drawing \(PDF\)](#)

[Product Specification PS-70567 \(PDF\)](#)

[RoHS Certificate of Compliance \(PDF\)](#)

**Agency Certification**

CSA LR19980  
UL E29179

**General**

Product Family PCB Headers  
Series [70567](#)  
Application Wire-to-Board  
Overview [cgrid\\_sl\\_products](#)  
Product Name C-Grid®

**Physical**

Breakaway No  
Circuits (Loaded) 22  
Circuits (maximum) 22  
Circuits Detail 22  
Color - Resin Black  
Durability (mating cycles max) 25  
First Mate / Last Break No  
Flammability 94V-0  
Glow-Wire Compliant No  
Guide to Mating Part No  
Keying to Mating Part None  
Lock to Mating Part Yes  
Material - Metal Brass, Phosphor Bronze  
Material - Plating Mating Gold  
Material - Plating Termination Tin  
Material - Resin High Temperature Thermoplastic  
Number of Rows 2  
Orientation Vertical  
PC Tail Length (in) 0.130 In  
PC Tail Length (mm) 3.30 mm  
PCB Locator No  
PCB Retention Yes  
PCB Thickness Recommended (in) 0.093 In  
PCB Thickness Recommended (mm) 2.36 mm  
Packaging Type Tube  
Pitch - Mating Interface (in) 0.100 In  
Pitch - Mating Interface (mm) 2.54 mm  
Pitch - Term. Interface (in) 0.100 In  
Pitch - Term. Interface (mm) 2.54 mm  
Plating min: Mating (µin) 30  
Plating min: Mating (µm) 0.75  
Plating min: Termination (µin) 75

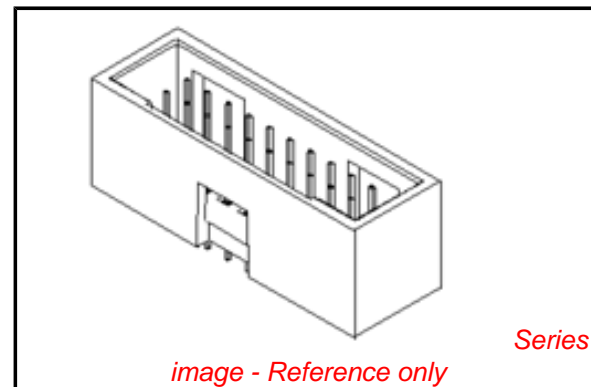


image - Reference only

**EU RoHS**

**ELV and RoHS  
Compliant**  
**REACH SVHC  
Contains SVHC: No**  
**Halogen-Free  
Status  
Not Reviewed**

**China RoHS**



**Need more information on product  
environmental compliance?**

Email [productcompliance@molex.com](mailto:productcompliance@molex.com)  
For a multiple part number RoHS Certificate of Compliance, [click here](#)

Please visit the [Contact Us](#) section for any non-product compliance questions.

**Search Parts in this Series**

[70567Series](#)

**Mates With**

[70013 Interim Clip](#)

|                                |                 |
|--------------------------------|-----------------|
| Plating min: Termination (µm)  | 1.875           |
| Polarized to Mating Part       | No              |
| Polarized to PCB               | No              |
| Shrouded                       | Open Ends       |
| Stackable                      | No              |
| Surface Mount Compatible (SMC) | Yes             |
| Temperature Range - Operating  | -55°C to +105°C |
| Termination Interface: Style   | Through Hole    |

### **Electrical**

|                               |         |
|-------------------------------|---------|
| Current - Maximum per Contact | 2.5A    |
| Voltage - Maximum             | 250V DC |

### **Solder Process Data**

|                                                |                              |
|------------------------------------------------|------------------------------|
| Duration at Max. Process Temperature (seconds) | 5                            |
| Lead-free Process Capability                   | SMC & Wave Capable (TH only) |
| Max. Cycles at Max. Process Temperature        | 1                            |
| Process Temperature max. C                     | 245                          |

### **Material Info**

|                 |              |
|-----------------|--------------|
| Old Part Number | A-70567-0349 |
|-----------------|--------------|

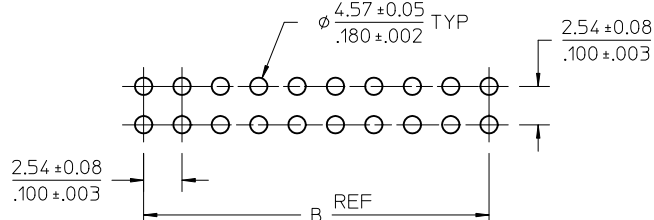
### **Reference - Drawing Numbers**

|                         |                |
|-------------------------|----------------|
| Packaging Specification | PK-70873-0018  |
| Product Specification   | PS-70567       |
| Sales Drawing           | SDA-70567-**** |

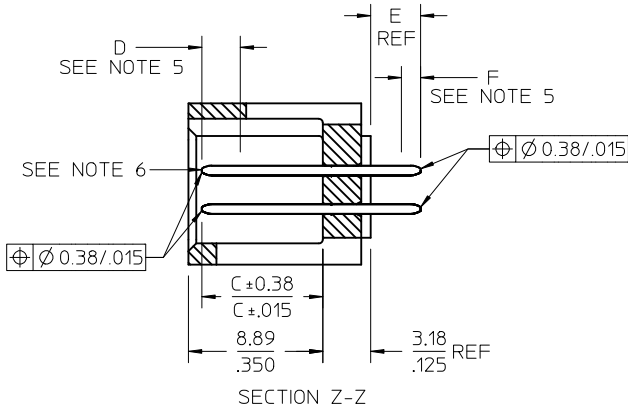
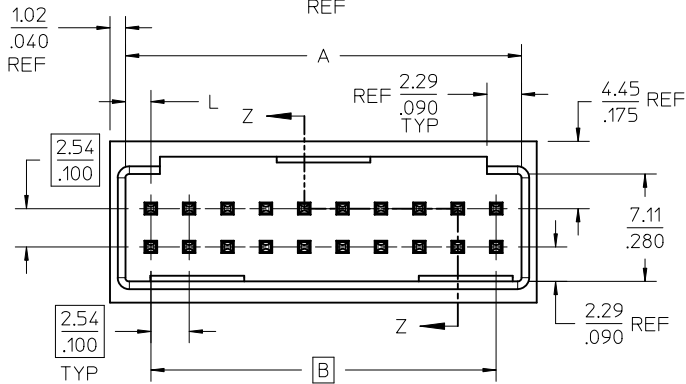
This document was generated on 05/26/2010

**PLEASE CHECK [WWW.MOLEX.COM](http://WWW.MOLEX.COM) FOR LATEST PART INFORMATION**

# OPTION A

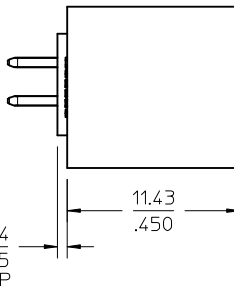
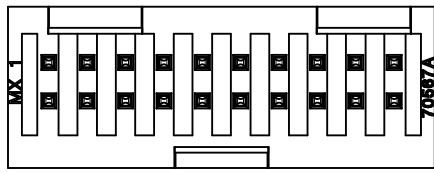
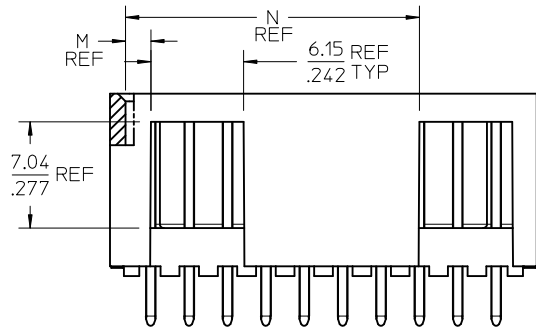


PCB LAYOUT: COMPONENT SIDE  
TYPICAL PCB THICKNESS: 2.36/.093



**NOTES:**

- MATERIAL: SHROUDED WAFER: GLASS FILLED, LIQUID CRYSTAL POLYMER, COLOR: BLACK, 94V-0. PINS: COPPER ALLOY.
- PLATING:
  - TIN 0.00381/.000150 MINIMUM TIN, OVER NICKEL UNDERPLATE OVERALL
  - 15 GOLD 0.00038/.000015 MINIMUM GOLD PLATE IN SELECTED AREA
  - 0.00191/.000075 MINIMUM TIN IN SELECTED AREA OVER NICKEL UNDERPLATE OVERALL
  - 30 GOLD 0.00076/.000030 MINIMUM GOLD PLATE IN SELECTED AREA
  - 0.00191/.000075 MINIMUM TIN IN SELECTED AREA, OVER NICKEL UNDERPLATE OVERALL
- PRODUCT SPECIFICATION: PS-70567.
- PACKAGING: SEE CHARTS
- MEASURE POINT FOR PLATING THICKNESS.
- PIN PUSHOUT FORCE: 4 LBS. MINIMUM IN DIRECTION INDICATED.
- FOR ILLUSTRATION PURPOSES, 20 (DUAL 10) CIRCUIT SIZE HEADER SHOWN.
- PIN SOLDERABILITY PER MOLEX SPEC. SMES-152.
- WINDOW NOT AVAILABLE ON 6 OR 8 CIRCUIT SIZE.
- THIS PART CONFORMS TO CLASS B REQUIREMENTS OF COSMETIC SPECIFICATION PS-45499-002.



| CKT | DIM A          | DIM B          | DIM L        | DIM M        | DIM N          |
|-----|----------------|----------------|--------------|--------------|----------------|
| 06  | 8.43<br>.332   | 5.08<br>.200   | 1.68<br>.066 | 1.68<br>.066 |                |
| 08  | 10.97<br>.432  | 7.62<br>.300   | 1.68<br>.066 | 1.68<br>.066 |                |
| 10  | 13.51<br>.532  | 10.16<br>.400  | 1.68<br>.066 | 4.22<br>.166 |                |
| 12  | 16.05<br>.632  | 12.70<br>.500  | 1.68<br>.066 | 4.22<br>.166 |                |
| 14  | 18.59<br>.732  | 15.24<br>.600  | 1.68<br>.066 | 6.76<br>.266 |                |
| 16  | 21.13<br>.832  | 17.78<br>.700  | 1.68<br>.066 | 6.76<br>.266 |                |
| 18  | 23.67<br>.932  | 20.32<br>.800  | 1.68<br>.066 | 9.30<br>.366 |                |
| 20  | 26.21<br>1.032 | 22.86<br>.900  | 1.68<br>.066 | 1.68<br>.066 | 19.46<br>.766  |
| 22  | 28.75<br>1.132 | 25.40<br>1.000 | 1.68<br>.066 | 1.68<br>.066 | 22.00<br>.866  |
| 24  | 31.29<br>1.232 | 27.94<br>1.100 | 1.68<br>.066 | 1.68<br>.066 | 24.54<br>.966  |
| 26  | 33.83<br>1.332 | 30.48<br>1.200 | 1.68<br>.066 | 1.68<br>.066 | 27.08<br>1.066 |
| 28  | 36.37<br>1.432 | 33.02<br>1.300 | 1.68<br>.066 | 1.68<br>.066 | 29.62<br>1.166 |
| 30  | 38.91<br>1.532 | 35.56<br>1.400 | 1.68<br>.066 | 1.68<br>.066 | 32.16<br>1.266 |
| 32  | 41.45<br>1.632 | 38.10<br>1.500 | 1.68<br>.066 | 1.68<br>.066 | 34.70<br>1.366 |
| 34  | 43.99<br>1.732 | 40.64<br>1.600 | 1.68<br>.066 | 1.68<br>.066 | 37.24<br>1.466 |
| 36  | 46.53<br>1.832 | 43.18<br>1.700 | 1.68<br>.066 | 1.68<br>.066 | 39.78<br>1.566 |
| 38  | 49.07<br>1.932 | 45.72<br>1.800 | 1.68<br>.066 | 1.68<br>.066 | 42.32<br>1.666 |
| 40  | 51.61<br>2.032 | 48.26<br>1.900 | 1.68<br>.066 | 1.68<br>.066 | 44.86<br>1.766 |
| 42  | 54.15<br>2.132 | 50.80<br>2.000 | 1.68<br>.066 | 1.68<br>.066 | 47.40<br>1.866 |
| 44  | 56.69<br>2.232 | 53.34<br>2.100 | 1.68<br>.066 | 1.68<br>.066 | 49.94<br>1.966 |
| 46  | 59.23<br>2.332 | 55.88<br>2.200 | 1.68<br>.066 | 1.68<br>.066 | 52.48<br>2.066 |
| 48  | 61.77<br>2.432 | 58.42<br>2.300 | 1.68<br>.066 | 1.68<br>.066 | 55.02<br>2.166 |
| 50  | 64.31<br>2.532 | 60.96<br>2.400 | 1.68<br>.066 | 1.68<br>.066 | 57.56<br>2.266 |
| 52  | 66.85<br>2.632 | 63.50<br>2.500 | 1.68<br>.066 | 1.68<br>.066 | 60.10<br>2.366 |
| 54  | 69.39<br>2.732 | 66.04<br>2.600 | 1.68<br>.066 | 1.68<br>.066 | 62.64<br>2.466 |
| 56  | 71.93<br>2.832 | 68.58<br>2.700 | 1.68<br>.066 | 1.68<br>.066 | 65.18<br>2.566 |
| 58  | 74.47<br>2.932 | 71.12<br>2.800 | 1.68<br>.066 | 1.68<br>.066 | 67.72<br>2.666 |
| 60  | 77.01<br>3.032 | 73.66<br>2.900 | 1.68<br>.066 | 1.68<br>.066 | 70.26<br>2.766 |
| 62  | 79.55<br>3.132 | 76.20<br>3.000 | 1.68<br>.066 | 1.68<br>.066 | 72.80<br>2.866 |
| 64  | 82.09<br>3.232 | 78.74<br>3.100 | 1.68<br>.066 | 1.68<br>.066 | 75.34<br>2.966 |
| 66  | 84.63<br>3.332 | 81.28<br>3.200 | 1.68<br>.066 | 1.68<br>.066 | 77.88<br>3.066 |
| 68  | 87.17<br>3.432 | 83.82<br>3.300 | 1.68<br>.066 | 1.68<br>.066 | 80.42<br>3.166 |
| 70  | 89.71<br>3.532 | 86.36<br>3.400 | 1.68<br>.066 | 1.68<br>.066 | 82.96<br>3.266 |
| 72  | 92.25<br>3.632 | 88.90<br>3.500 | 1.68<br>.066 | 1.68<br>.066 | 85.50<br>3.366 |

|                                                                                                                                                                                       |                                      |                                       |      |                 |  |                    |              |                        |  |
|---------------------------------------------------------------------------------------------------------------------------------------------------------------------------------------|--------------------------------------|---------------------------------------|------|-----------------|--|--------------------|--------------|------------------------|--|
| <b>MODIFY HOUSING WALL</b><br>EC NO: UCP2010-1587<br>DRWINAS BARRA 2010/01/12<br>CHKD:BARKER 2010/01/12<br>APPR:SMILLER 2010/03/31                                                    | QUALITY SYMBOLS<br>∇=0<br>∇=0<br>∇=0 | GENERAL TOLERANCES (UNLESS SPECIFIED) |      | DIMENSION STYLE |  | SCALE              | DESIGN UNITS | THIRD ANGLE PROJECTION |  |
|                                                                                                                                                                                       |                                      | mm                                    | INCH | MM/IN           |  | 4:1                | INCH         |                        |  |
|                                                                                                                                                                                       |                                      | DRAWN BY DATE                         |      | CHECKED BY DATE |  | APPROVED BY DATE   |              |                        |  |
|                                                                                                                                                                                       |                                      | EIK 1988/03/10                        |      | EIK 1988/03/10  |  | SMILLER 2010/03/31 |              |                        |  |
| MATERIAL NO.                                                                                                                                                                          |                                      | DOCUMENT NO.                          |      | SHEET NO.       |  |                    |              |                        |  |
| SEE TABLE                                                                                                                                                                             |                                      | SEE TABLE                             |      | SDA-70567-****  |  | 1 OF 5             |              |                        |  |
| DRAFT WHERE APPLICABLE MUST REMAIN WITHIN DIMENSIONS<br>THIS DRAWING CONTAINS INFORMATION THAT IS PROPRIETARY TO MOLEX INCORPORATED AND SHOULD NOT BE USED WITHOUT WRITTEN PERMISSION |                                      |                                       |      |                 |  |                    |              |                        |  |

# OPTION B



PCB LAYOUT: COMPONENT SIDE  
TYPICAL PCB THICKNESS: 2.36/.093



### NOTES:

- MATERIAL: SHROUDED WAFER: 30% G.F. LCP, COLOR: BLACK, 94V-0. PINS: COPPER ALLOY.
- PLATING:  
 TIN - (0.00381)/.000150 MINIMUM TIN OVER NICKEL UNDERPLATE OVERALL  
 15 GOLD - (0.000381)/.000015 MINIMUM GOLD PLATE IN SELECTED AREA  
 (0.00191)/.000075 MINIMUM TIN IN SELECTED AREA, OVER NICKEL UNDERPLATE OVERALL  
 30 GOLD - (0.000761)/.000030 MINIMUM GOLD PLATE IN SELECTED AREA  
 (0.00191)/.000075 MINIMUM TIN IN SELECTED AREA, OVER NICKEL UNDERPLATE OVERALL
- PRODUCT SPECIFICATION: PS-70567.
- PACKAGING: SEE CHARTS
- PIN PUSHOUT FORCE: 4 LBS. MIN IN DIRECTION INDICATED.
- FOR ILLUSTRATION PURPOSES, 20 (DUAL 10) CIRCUIT SIZE HEADER SHOWN.
- PIN SOLDERABILITY PER MOLEX SPEC. SMES-152.
- MEASURE POINT FOR PLATING THICKNESS.
- WINDOW IS NOT AVAILABLE ON 6 CIRCUIT.
- THIS PART CONFORMS TO CLASS B REQUIREMENTS OF COSMETIC SPECIFICATION PS-45499-002.
- SEE SHEET 1 FOR ALL OTHER DIMENSIONS



| CKT | DIM A | DIM B | DIM L | DIM M | DIM N |
|-----|-------|-------|-------|-------|-------|
| 06  | 12.70 | 5.08  | 3.81  | 3.81  | ---   |
|     | .500  | .200  | .150  | .150  | ---   |
| 08  | 15.24 | 7.62  | 3.81  | 3.81  | ---   |
|     | .600  | .300  | .150  | .150  | ---   |
| 10  | 17.78 | 10.16 | 3.81  | 6.35  | ---   |
|     | .700  | .400  | .150  | .150  | ---   |
| 12  | 20.32 | 12.70 | 3.81  | 6.35  | ---   |
|     | .800  | .500  | .150  | .150  | ---   |
| 14  | 22.86 | 15.24 | 3.81  | 8.89  | ---   |
|     | .900  | .600  | .150  | .350  | ---   |
| 16  | 25.40 | 17.78 | 3.81  | 8.89  | ---   |
|     | 1.000 | .700  | .150  | .350  | ---   |
| 18  | 27.94 | 20.32 | 3.81  | 11.43 | ---   |
|     | 1.100 | .800  | .150  | .450  | ---   |
| 20  | 30.48 | 22.86 | 3.81  | 3.81  | 21.59 |
|     | 1.200 | .900  | .150  | .150  | .850  |
| 22  | 33.02 | 25.40 | 3.81  | 3.81  | 24.13 |
|     | 1.300 | 1.000 | .150  | .150  | .950  |
| 24  | 35.56 | 27.94 | 3.81  | 3.81  | 26.67 |
|     | 1.400 | 1.100 | .150  | .150  | 1.050 |
| 26  | 38.10 | 30.48 | 3.81  | 3.81  | 29.21 |
|     | 1.500 | 1.200 | .150  | .150  | 1.150 |
| 28  | 40.64 | 33.02 | 3.81  | 3.81  | 31.75 |
|     | 1.600 | 1.300 | .150  | .150  | 1.250 |
| 30  | 43.18 | 35.56 | 3.81  | 3.81  | 34.29 |
|     | 1.700 | 1.400 | .150  | .150  | 1.350 |
| 32  | 45.72 | 38.10 | 3.81  | 3.81  | 36.83 |
|     | 1.800 | 1.500 | .150  | .150  | 1.450 |
| 34  | 48.26 | 40.64 | 3.81  | 3.81  | 39.37 |
|     | 1.900 | 1.600 | .150  | .150  | 1.550 |
| 36  | 50.80 | 43.18 | 3.81  | 3.81  | 41.91 |
|     | 2.000 | 1.700 | .150  | .150  | 1.650 |
| 38  | 53.34 | 45.72 | 3.81  | 3.81  | 44.45 |
|     | 2.100 | 1.800 | .150  | .150  | 1.750 |
| 40  | 55.88 | 48.26 | 3.81  | 3.81  | 46.99 |
|     | 2.200 | 1.900 | .150  | .150  | 1.850 |
| 42  | 58.42 | 50.80 | 3.81  | 3.81  | 49.53 |
|     | 2.300 | 2.000 | .150  | .150  | 1.950 |
| 44  | 60.96 | 53.34 | 3.81  | 3.81  | 52.07 |
|     | 2.400 | 2.100 | .150  | .150  | 2.050 |
| 46  | 63.50 | 55.88 | 3.81  | 3.81  | 54.61 |
|     | 2.500 | 2.200 | .150  | .150  | 2.150 |
| 48  | 66.04 | 58.42 | 3.81  | 3.81  | 57.15 |
|     | 2.600 | 2.300 | .150  | .150  | 2.250 |
| 50  | 68.58 | 60.96 | 3.81  | 3.81  | 59.69 |
|     | 2.700 | 2.400 | .150  | .150  | 2.350 |
| 52  | 71.12 | 63.50 | 3.81  | 3.81  | 62.23 |
|     | 2.800 | 2.500 | .150  | .150  | 2.450 |
| 54  | 73.66 | 66.04 | 3.81  | 3.81  | 64.77 |
|     | 2.900 | 2.600 | .150  | .150  | 2.550 |
| 56  | 76.20 | 68.58 | 3.81  | 3.81  | 67.31 |
|     | 3.000 | 2.700 | .150  | .150  | 2.650 |
| 58  | 78.74 | 71.12 | 3.81  | 3.81  | 69.85 |
|     | 3.100 | 2.800 | .150  | .150  | 2.750 |
| 60  | 81.28 | 73.66 | 3.81  | 3.81  | 72.39 |
|     | 3.200 | 2.900 | .150  | .150  | 2.850 |
| 62  | 83.82 | 76.20 | 3.81  | 3.81  | 74.93 |
|     | 3.300 | 3.000 | .150  | .150  | 2.950 |
| 64  | 86.36 | 78.74 | 3.81  | 3.81  | 77.47 |
|     | 3.400 | 3.100 | .150  | .150  | 3.050 |
| 66  | 88.90 | 81.28 | 3.81  | 3.81  | 80.01 |
|     | 3.500 | 3.200 | .150  | .150  | 3.150 |
| 68  | 91.44 | 83.82 | 3.81  | 3.81  | 82.55 |
|     | 3.600 | 3.300 | .150  | .150  | 3.250 |
| 70  | 93.98 | 86.36 | 3.81  | 3.81  | 85.09 |
|     | 3.700 | 3.400 | .150  | .150  | 3.350 |
| 72  | 96.52 | 88.90 | 3.81  | 3.81  | 87.63 |
|     | 3.800 | 3.500 | .150  | .150  | 3.450 |

|                                                                                                                              |                                      |                                       |      |                                                                                                                               |              |                |              |                                                                                                     |  |  |
|------------------------------------------------------------------------------------------------------------------------------|--------------------------------------|---------------------------------------|------|-------------------------------------------------------------------------------------------------------------------------------|--------------|----------------|--------------|-----------------------------------------------------------------------------------------------------|--|--|
| MODIFY HOUSING WALL<br>EC NO: UCP2010-1587<br>DRWN:MS BARRA 2010/01/12<br>CHKD:BBARKER 2010/01/12<br>APPR:SMILLER 2010/03/31 | QUALITY SYMBOLS<br>▽=0<br>▽=0<br>▽=0 | GENERAL TOLERANCES (UNLESS SPECIFIED) |      | DIMENSION STYLE                                                                                                               |              | SCALE          | DESIGN UNITS | THIRD ANGLE PROJECTION                                                                              |  |  |
|                                                                                                                              |                                      | mm                                    | INCH | MM/IN                                                                                                                         | DATE         | 4:1            | INCH         | 4 SIDES SHROUDED HEADER<br>HIGH TEMP, (2.54)/.100<br>GRID W/ (0.64)/.025 PINS<br>MOLEX INCORPORATED |  |  |
|                                                                                                                              |                                      | DRAWN BY                              |      | DATE                                                                                                                          | CHECKED BY   |                | DATE         |                                                                                                     |  |  |
|                                                                                                                              |                                      | APPROVED BY                           |      | DATE                                                                                                                          | MATERIAL NO. |                | DOCUMENT NO. | SHEET NO.                                                                                           |  |  |
| DRAFT WHERE APPLICABLE MUST REMAIN WITHIN DIMENSIONS                                                                         |                                      | SEE TABLE                             |      | THIS DRAWING CONTAINS INFORMATION THAT IS PROPRIETARY TO MOLEX INCORPORATED AND SHOULD NOT BE USED WITHOUT WRITTEN PERMISSION |              | SDA-70567-**** |              | 2 OF 5                                                                                              |  |  |

| 20                            | 19                         | 18          | 17             | 16                    | 15          | 14                     | 13          | 12                              | 11 | 10 | 9 | 8 | 7 | 6 | 5 | 4 | 3 | 2 | 1 |
|-------------------------------|----------------------------|-------------|----------------|-----------------------|-------------|------------------------|-------------|---------------------------------|----|----|---|---|---|---|---|---|---|---|---|
| ENGINEERING NUMBER<br>A-70567 | MANUFACTURE RELEASE STATUS | E REF.      | C ±.015 (0.38) | CONNECTOR END PLATING |             | P.C. BOARD END PLATING |             | PACKAGING INFORMATION PK-70873- |    |    |   |   |   |   |   |   |   |   |   |
|                               |                            |             |                | TYPE                  | D MEAS.     | TYPE                   | F MEAS.     |                                 |    |    |   |   |   |   |   |   |   |   |   |
| -0001/-0034                   | R.F.M.                     | .130 (3.30) | .315 (8.00)    | TIN                   | .100 (2.54) | TIN                    | .050 (1.27) | 0018                            |    |    |   |   |   |   |   |   |   |   |   |
| -0035/-0068                   | R.F.M.                     | .200 (5.08) | .315 (8.00)    | TIN                   | .100 (2.54) | TIN                    | .050 (1.27) | 0018                            |    |    |   |   |   |   |   |   |   |   |   |
| -0069/-0102                   | R.F.M.                     | .130 (3.30) | .315 (8.00)    | 15 GOLD               | .100 (2.54) | TIN                    | .050 (1.27) | 0018                            |    |    |   |   |   |   |   |   |   |   |   |
| -0103/-0136                   | R.F.M.                     | .200 (5.08) | .315 (8.00)    | 15 GOLD               | .100 (2.54) | TIN                    | .050 (1.27) | 0018                            |    |    |   |   |   |   |   |   |   |   |   |
| -0137/-0170                   | R.F.M.                     | .130 (3.30) | .315 (8.00)    | 30 GOLD               | .100 (2.54) | TIN                    | .050 (1.27) | 0018                            |    |    |   |   |   |   |   |   |   |   |   |
| -0171/-0204                   | R.F.M.                     | .200 (5.08) | .315 (8.00)    | 30 GOLD               | .100 (2.54) | TIN                    | .050 (1.27) | 0018                            |    |    |   |   |   |   |   |   |   |   |   |

| NO. OF CKTS | OPTION "A" |              | OPTION "A" |              | OPTION "A" |              | OPTION "A" |              | OPTION "A" |              | OPTION "A" |              |            |            |            |            |            |            | NO. OF CKTS |
|-------------|------------|--------------|------------|--------------|------------|--------------|------------|--------------|------------|--------------|------------|--------------|------------|------------|------------|------------|------------|------------|-------------|
|             | EDP NUMBER | ENG NUMBER   | EDP NUMBER | ENG NUMBER   | EDP NUMBER | ENG NUMBER   | EDP NUMBER | ENG NUMBER   | EDP NUMBER | ENG NUMBER   | EDP NUMBER | ENG NUMBER   | EDP NUMBER | ENG NUMBER | EDP NUMBER | ENG NUMBER | EDP NUMBER | ENG NUMBER |             |
| 06          | 15-80-0061 | A-70567-0001 | 70567-0035 | A-70567-0035 | 15-80-0063 | A-70567-0069 | 70567-0103 | A-70567-0103 | 15-80-0065 | A-70567-0137 | 70567-0171 | A-70567-0171 |            |            |            |            |            |            | 06          |
| 08          | 15-80-0081 | A-70567-0002 | 70567-0036 | A-70567-0036 | 15-80-0083 | A-70567-0070 | 70567-0104 | A-70567-0104 | 15-80-0085 | A-70567-0138 | 70567-0172 | A-70567-0172 |            |            |            |            |            |            | 08          |
| 10          | 15-80-0101 | A-70567-0003 | 70567-0037 | A-70567-0037 | 15-80-0103 | A-70567-0071 | 70567-0105 | A-70567-0105 | 15-80-0105 | A-70567-0139 | 70567-0173 | A-70567-0173 |            |            |            |            |            |            | 10          |
| 12          | 15-80-0121 | A-70567-0004 | 70567-0038 | A-70567-0038 | 15-80-0123 | A-70567-0072 | 70567-0106 | A-70567-0106 | 15-80-0125 | A-70567-0140 | 70567-0174 | A-70567-0174 |            |            |            |            |            |            | 12          |
| 14          | 15-80-0141 | A-70567-0005 | 70567-0039 | A-70567-0039 | 15-80-0143 | A-70567-0073 | 70567-0107 | A-70567-0107 | 15-80-0145 | A-70567-0141 | 70567-0175 | A-70567-0175 |            |            |            |            |            |            | 14          |
| 16          | 15-80-0161 | A-70567-0006 | 70567-0040 | A-70567-0040 | 15-80-0163 | A-70567-0074 | 70567-0108 | A-70567-0108 | 15-80-0165 | A-70567-0142 | 70567-0176 | A-70567-0176 |            |            |            |            |            |            | 16          |
| 18          | 15-80-0181 | A-70567-0007 | 70567-0041 | A-70567-0041 | 15-80-0183 | A-70567-0075 | 70567-0109 | A-70567-0109 | 15-80-0185 | A-70567-0143 | 70567-0177 | A-70567-0177 |            |            |            |            |            |            | 18          |
| 20          | 15-80-0201 | A-70567-0008 | 70567-0042 | A-70567-0042 | 15-80-0203 | A-70567-0076 | 70567-0110 | A-70567-0110 | 15-80-0205 | A-70567-0144 | 70567-0178 | A-70567-0178 |            |            |            |            |            |            | 20          |
| 22          | 15-80-0221 | A-70567-0009 | 70567-0043 | A-70567-0043 | 15-80-0223 | A-70567-0077 | 70567-0111 | A-70567-0111 | 15-80-0225 | A-70567-0145 | 70567-0179 | A-70567-0179 |            |            |            |            |            |            | 22          |
| 24          | 15-80-0241 | A-70567-0010 | 70567-0044 | A-70567-0044 | 15-80-0243 | A-70567-0078 | 70567-0112 | A-70567-0112 | 15-80-0245 | A-70567-0146 | 70567-0180 | A-70567-0180 |            |            |            |            |            |            | 24          |
| 26          | 15-80-0261 | A-70567-0011 | 70567-0045 | A-70567-0045 | 15-80-0263 | A-70567-0079 | 70567-0113 | A-70567-0113 | 15-80-0265 | A-70567-0147 | 70567-0181 | A-70567-0181 |            |            |            |            |            |            | 26          |
| 28          | 15-80-0281 | A-70567-0012 | 70567-0046 | A-70567-0046 | 15-80-0283 | A-70567-0080 | 70567-0114 | A-70567-0114 | 15-80-0285 | A-70567-0148 | 70567-0182 | A-70567-0182 |            |            |            |            |            |            | 28          |
| 30          | 15-80-0301 | A-70567-0013 | 70567-0047 | A-70567-0047 | 15-80-0303 | A-70567-0081 | 70567-0115 | A-70567-0115 | 15-80-0305 | A-70567-0149 | 70567-0183 | A-70567-0183 |            |            |            |            |            |            | 30          |
| 32          | 15-80-0321 | A-70567-0014 | 70567-0048 | A-70567-0048 | 15-80-0323 | A-70567-0082 | 70567-0116 | A-70567-0116 | 15-80-0325 | A-70567-0150 | 70567-0184 | A-70567-0184 |            |            |            |            |            |            | 32          |
| 34          | 15-80-0341 | A-70567-0015 | 70567-0049 | A-70567-0049 | 15-80-0343 | A-70567-0083 | 70567-0117 | A-70567-0117 | 15-80-0345 | A-70567-0151 | 70567-0185 | A-70567-0185 |            |            |            |            |            |            | 34          |
| 36          | 15-80-0361 | A-70567-0016 | 70567-0050 | A-70567-0050 | 15-80-0363 | A-70567-0084 | 70567-0118 | A-70567-0118 | 15-80-0365 | A-70567-0152 | 70567-0186 | A-70567-0186 |            |            |            |            |            |            | 36          |
| 38          | 15-80-0381 | A-70567-0017 | 70567-0051 | A-70567-0051 | 15-80-0383 | A-70567-0085 | 70567-0119 | A-70567-0119 | 15-80-0385 | A-70567-0153 | 70567-0187 | A-70567-0187 |            |            |            |            |            |            | 38          |
| 40          | 15-80-0401 | A-70567-0018 | 70567-0052 | A-70567-0052 | 15-80-0403 | A-70567-0086 | 70567-0120 | A-70567-0120 | 15-80-0405 | A-70567-0154 | 70567-0188 | A-70567-0188 |            |            |            |            |            |            | 40          |
| 42          | 15-80-0421 | A-70567-0019 | 70567-0053 | A-70567-0053 | 15-80-0423 | A-70567-0087 | 70567-0121 | A-70567-0121 | 15-80-0425 | A-70567-0155 | 70567-0189 | A-70567-0189 |            |            |            |            |            |            | 42          |
| 44          | 15-80-0441 | A-70567-0020 | 70567-0054 | A-70567-0054 | 15-80-0443 | A-70567-0088 | 70567-0122 | A-70567-0122 | 15-80-0445 | A-70567-0156 | 70567-0190 | A-70567-0190 |            |            |            |            |            |            | 44          |
| 46          | 15-80-0461 | A-70567-0021 | 70567-0055 | A-70567-0055 | 15-80-0463 | A-70567-0089 | 70567-0123 | A-70567-0123 | 15-80-0465 | A-70567-0157 | 70567-0191 | A-70567-0191 |            |            |            |            |            |            | 46          |
| 48          | 15-80-0481 | A-70567-0022 | 70567-0056 | A-70567-0056 | 15-80-0483 | A-70567-0090 | 70567-0124 | A-70567-0124 | 15-80-0485 | A-70567-0158 | 70567-0192 | A-70567-0192 |            |            |            |            |            |            | 48          |
| 50          | 15-80-0501 | A-70567-0023 | 70567-0057 | A-70567-0057 | 15-80-0503 | A-70567-0091 | 70567-0125 | A-70567-0125 | 15-80-0505 | A-70567-0159 | 70567-0193 | A-70567-0193 |            |            |            |            |            |            | 50          |
| 52          | 15-80-0521 | A-70567-0024 | 70567-0058 | A-70567-0058 | 15-80-0523 | A-70567-0092 | 70567-0126 | A-70567-0126 | 15-80-0525 | A-70567-0160 | 70567-0194 | A-70567-0194 |            |            |            |            |            |            | 52          |
| 54          | 15-80-0541 | A-70567-0025 | 70567-0059 | A-70567-0059 | 15-80-0543 | A-70567-0093 | 70567-0127 | A-70567-0127 | 15-80-0545 | A-70567-0161 | 70567-0195 | A-70567-0195 |            |            |            |            |            |            | 54          |
| 56          | 15-80-0561 | A-70567-0026 | 70567-0060 | A-70567-0060 | 15-80-0563 | A-70567-0094 | 70567-0128 | A-70567-0128 | 15-80-0565 | A-70567-0162 | 70567-0196 | A-70567-0196 |            |            |            |            |            |            | 56          |
| 58          | 15-80-0581 | A-70567-0027 | 70567-0061 | A-70567-0061 | 15-80-0583 | A-70567-0095 | 70567-0129 | A-70567-0129 | 15-80-0585 | A-70567-0163 | 70567-0197 | A-70567-0197 |            |            |            |            |            |            | 58          |
| 60          | 15-80-0601 | A-70567-0028 | 70567-0062 | A-70567-0062 | 15-80-0603 | A-70567-0096 | 70567-0130 | A-70567-0130 | 15-80-0605 | A-70567-0164 | 70567-0198 | A-70567-0198 |            |            |            |            |            |            | 60          |
| 62          | 15-80-0621 | A-70567-0029 | 70567-0063 | A-70567-0063 | 15-80-0623 | A-70567-0097 | 70567-0131 | A-70567-0131 | 15-80-0625 | A-70567-0165 | 70567-0199 | A-70567-0199 |            |            |            |            |            |            | 62          |
| 64          | 15-80-0641 | A-70567-0030 | 70567-0064 | A-70567-0064 | 15-80-0643 | A-70567-0098 | 70567-0132 | A-70567-0132 | 15-80-0645 | A-70567-0166 | 70567-0200 | A-70567-0200 |            |            |            |            |            |            | 64          |
| 66          | 15-80-0661 | A-70567-0031 | 70567-0065 | A-70567-0065 | 15-80-0663 | A-70567-0099 | 70567-0133 | A-70567-0133 | 15-80-0665 | A-70567-0167 | 70567-0201 | A-70567-0201 |            |            |            |            |            |            | 66          |
| 68          | 15-80-0681 | A-70567-0032 | 70567-0066 | A-70567-0066 | 15-80-0683 | A-70567-0100 | 70567-0134 | A-70567-0134 | 15-80-0685 | A-70567-0168 | 70567-0202 | A-70567-0202 |            |            |            |            |            |            | 68          |
| 70          | 15-80-0701 | A-70567-0033 | 70567-0067 | A-70567-0067 | 15-80-0703 | A-70567-0101 | 70567-0135 | A-70567-0135 | 15-80-0705 | A-70567-0169 | 70567-0203 | A-70567-0203 |            |            |            |            |            |            | 70          |
| 72          | 15-80-0721 | A-70567-0034 | 70567-0068 | A-70567-0068 | 15-80-0723 | A-70567-0102 | 70567-0136 | A-70567-0136 | 15-80-0725 | A-70567-0170 | 70567-0204 | A-70567-0204 |            |            |            |            |            |            | 72          |

| <b>SEE SHEETS 1 &amp; 2</b><br>EC NO: UCP2010-1587<br>2010/01/12<br>DRWNS BARBA<br>CHKD BARKER<br>APPR: SMILLER<br>2010/03/31 | <b>QUALITY SYMBOLS</b><br>∇=0<br>∇=0<br>∇=0 | <b>GENERAL TOLERANCES (UNLESS SPECIFIED)</b><br><table border="1"> <tr><th></th><th>mm</th><th>INCH</th></tr> <tr><td>4 PLACES ±</td><td>---</td><td>---</td></tr> <tr><td>3 PLACES ±</td><td>+.005</td><td>±.010</td></tr> <tr><td>2 PLACES ±</td><td>+.013</td><td>±.010</td></tr> <tr><td>1 PLACE ±</td><td>+.025</td><td>±---</td></tr> </table> ANGULAR ±1/2° |       | mm                                                                                                                                   | INCH | 4 PLACES ± | --- | --- | 3 PLACES ± | +.005 | ±.010 | 2 PLACES ± | +.013 | ±.010 | 1 PLACE ± | +.025 | ±--- | <b>DIMENSION STYLE</b><br>MM/IN<br>DRAWN BY DATE<br>EIK 1988/03/10<br>CHECKED BY DATE<br>EIK 1988/03/10<br>APPROVED BY DATE<br>SMILLER 2010/03/31 | SCALE 1:1<br>DESIGN UNITS INCH<br>THIRD ANGLE PROJECTION | <b>TITLE</b><br>4 SIDES SHROUDED HEADER<br>HIGH TEMP. (2.54)/.100<br>GRID W/ (.064)/.025 PINS<br><b>MOLEX INCORPORATED</b> | MATERIAL NO.<br><b>SDA-70567-****</b><br>SHEET NO.<br>3 OF 5 |
|-------------------------------------------------------------------------------------------------------------------------------|---------------------------------------------|--------------------------------------------------------------------------------------------------------------------------------------------------------------------------------------------------------------------------------------------------------------------------------------------------------------------------------------------------------------------|-------|--------------------------------------------------------------------------------------------------------------------------------------|------|------------|-----|-----|------------|-------|-------|------------|-------|-------|-----------|-------|------|---------------------------------------------------------------------------------------------------------------------------------------------------|----------------------------------------------------------|----------------------------------------------------------------------------------------------------------------------------|--------------------------------------------------------------|
|                                                                                                                               |                                             | mm                                                                                                                                                                                                                                                                                                                                                                 | INCH  |                                                                                                                                      |      |            |     |     |            |       |       |            |       |       |           |       |      |                                                                                                                                                   |                                                          |                                                                                                                            |                                                              |
|                                                                                                                               | 4 PLACES ±                                  | ---                                                                                                                                                                                                                                                                                                                                                                | ---   |                                                                                                                                      |      |            |     |     |            |       |       |            |       |       |           |       |      |                                                                                                                                                   |                                                          |                                                                                                                            |                                                              |
|                                                                                                                               | 3 PLACES ±                                  | +.005                                                                                                                                                                                                                                                                                                                                                              | ±.010 |                                                                                                                                      |      |            |     |     |            |       |       |            |       |       |           |       |      |                                                                                                                                                   |                                                          |                                                                                                                            |                                                              |
| 2 PLACES ±                                                                                                                    | +.013                                       | ±.010                                                                                                                                                                                                                                                                                                                                                              |       |                                                                                                                                      |      |            |     |     |            |       |       |            |       |       |           |       |      |                                                                                                                                                   |                                                          |                                                                                                                            |                                                              |
| 1 PLACE ±                                                                                                                     | +.025                                       | ±---                                                                                                                                                                                                                                                                                                                                                               |       |                                                                                                                                      |      |            |     |     |            |       |       |            |       |       |           |       |      |                                                                                                                                                   |                                                          |                                                                                                                            |                                                              |
| DRAFT WHERE APPLICABLE MUST REMAIN WITHIN DIMENSIONS                                                                          |                                             | <b>SEE TABLE</b>                                                                                                                                                                                                                                                                                                                                                   |       | <b>THIS DRAWING CONTAINS INFORMATION THAT IS PROPRIETARY TO MOLEX INCORPORATED AND SHOULD NOT BE USED WITHOUT WRITTEN PERMISSION</b> |      |            |     |     |            |       |       |            |       |       |           |       |      |                                                                                                                                                   |                                                          |                                                                                                                            |                                                              |

| ENGINEERING NUMBER<br>A-70567 | MANUFACTURE RELEASE STATUS | E<br>REF.      | C<br>±.015<br>(0.38) | CONNECTOR END PLATING |                |      | P.C. BOARD END PLATING |      |  | PACKAGING INFORMATION<br>PK-70873- |
|-------------------------------|----------------------------|----------------|----------------------|-----------------------|----------------|------|------------------------|------|--|------------------------------------|
|                               |                            |                |                      | TYPE                  | D<br>MEAS.     | TYPE | F<br>MEAS.             |      |  |                                    |
|                               |                            |                |                      |                       |                |      |                        |      |  |                                    |
| -0205/-0238                   | R.F.M.                     | .130<br>(3.30) | .315<br>(8.00)       | TIN                   | .100<br>(2.54) | TIN  | .050<br>(1.27)         | 0018 |  |                                    |
| -0239/-0272                   | R.F.M.                     | .200<br>(5.08) | .315<br>(8.00)       | TIN                   | .100<br>(2.54) | TIN  | .050<br>(1.27)         | 0018 |  |                                    |
| -0273/-0306                   | R.F.M.                     | .130<br>(3.30) | .315<br>(8.00)       | 15 GOLD               | .100<br>(2.54) | TIN  | .050<br>(1.27)         | 0018 |  |                                    |
| -0307/-0340                   | R.F.M.                     | .200<br>(5.08) | .315<br>(8.00)       | 15 GOLD               | .100<br>(2.54) | TIN  | .050<br>(1.27)         | 0018 |  |                                    |
| -0341/-0374                   | R.F.M.                     | .130<br>(3.30) | .315<br>(8.00)       | 30 GOLD               | .100<br>(2.54) | TIN  | .050<br>(1.27)         | 0018 |  |                                    |
| -0375/-0408                   | R.F.M.                     | .200<br>(5.08) | .315<br>(8.00)       | 30 GOLD               | .100<br>(2.54) | TIN  | .050<br>(1.27)         | 0018 |  |                                    |

| NO. OF CKTS | OPTION "B" |              | OPTION "B" |              | OPTION "B" |              | OPTION "B" |              | OPTION "B" |              | OPTION "B" |              |            |            |            |            |            |            | NO. OF CKTS |
|-------------|------------|--------------|------------|--------------|------------|--------------|------------|--------------|------------|--------------|------------|--------------|------------|------------|------------|------------|------------|------------|-------------|
|             | EDP NUMBER | ENG NUMBER   | EDP NUMBER | ENG NUMBER   | EDP NUMBER | ENG NUMBER   | EDP NUMBER | ENG NUMBER   | EDP NUMBER | ENG NUMBER   | EDP NUMBER | ENG NUMBER   | EDP NUMBER | ENG NUMBER | EDP NUMBER | ENG NUMBER | EDP NUMBER | ENG NUMBER |             |
| 06          | 15-80-0067 | A-70567-0205 | 70567-0239 | A-70567-0239 | 15-80-0069 | A-70567-0273 | 70567-0307 | A-70567-0307 | 15-80-1061 | A-70567-0341 | 70567-0375 | A-70567-0375 |            |            |            |            |            |            | 06          |
| 08          | 15-80-0087 | A-70567-0206 | 70567-0240 | A-70567-0240 | 15-80-0089 | A-70567-0274 | 70567-0308 | A-70567-0308 | 15-80-1081 | A-70567-0342 | 70567-0376 | A-70567-0376 |            |            |            |            |            |            | 08          |
| 10          | 15-80-0107 | A-70567-0207 | 70567-0241 | A-70567-0241 | 15-80-0109 | A-70567-0275 | 70567-0309 | A-70567-0309 | 15-80-1101 | A-70567-0343 | 70567-0377 | A-70567-0377 |            |            |            |            |            |            | 10          |
| 12          | 15-80-0127 | A-70567-0208 | 70567-0242 | A-70567-0242 | 15-80-0129 | A-70567-0276 | 70567-0310 | A-70567-0310 | 15-80-1121 | A-70567-0344 | 70567-0378 | A-70567-0378 |            |            |            |            |            |            | 12          |
| 14          | 15-80-0147 | A-70567-0209 | 70567-0243 | A-70567-0243 | 15-80-0149 | A-70567-0277 | 70567-0311 | A-70567-0311 | 15-80-1141 | A-70567-0345 | 70567-0379 | A-70567-0379 |            |            |            |            |            |            | 14          |
| 16          | 15-80-0167 | A-70567-0210 | 70567-0244 | A-70567-0244 | 15-80-0169 | A-70567-0278 | 70567-0312 | A-70567-0312 | 15-80-1161 | A-70567-0346 | 70567-0380 | A-70567-0380 |            |            |            |            |            |            | 16          |
| 18          | 15-80-0187 | A-70567-0211 | 70567-0245 | A-70567-0245 | 15-80-0189 | A-70567-0279 | 70567-0313 | A-70567-0313 | 15-80-1181 | A-70567-0347 | 70567-0381 | A-70567-0381 |            |            |            |            |            |            | 18          |
| 20          | 15-80-0207 | A-70567-0212 | 70567-0246 | A-70567-0246 | 15-80-0209 | A-70567-0280 | 70567-0314 | A-70567-0314 | 15-80-1201 | A-70567-0348 | 70567-0382 | A-70567-0382 |            |            |            |            |            |            | 20          |
| 22          | 15-80-0227 | A-70567-0213 | 70567-0247 | A-70567-0247 | 15-80-0229 | A-70567-0281 | 70567-0315 | A-70567-0315 | 15-80-1221 | A-70567-0349 | 70567-0383 | A-70567-0383 |            |            |            |            |            |            | 22          |
| 24          | 15-80-0247 | A-70567-0214 | 70567-0248 | A-70567-0248 | 15-80-0249 | A-70567-0282 | 70567-0316 | A-70567-0316 | 15-80-1241 | A-70567-0350 | 70567-0384 | A-70567-0384 |            |            |            |            |            |            | 24          |
| 26          | 15-80-0267 | A-70567-0215 | 70567-0249 | A-70567-0249 | 15-80-0269 | A-70567-0283 | 70567-0317 | A-70567-0317 | 15-80-1261 | A-70567-0351 | 70567-0385 | A-70567-0385 |            |            |            |            |            |            | 26          |
| 28          | 15-80-0287 | A-70567-0216 | 70567-0250 | A-70567-0250 | 15-80-0289 | A-70567-0284 | 70567-0318 | A-70567-0318 | 15-80-1281 | A-70567-0352 | 70567-0386 | A-70567-0386 |            |            |            |            |            |            | 28          |
| 30          | 15-80-0307 | A-70567-0217 | 70567-0251 | A-70567-0251 | 15-80-0309 | A-70567-0285 | 70567-0319 | A-70567-0319 | 15-80-1301 | A-70567-0353 | 70567-0387 | A-70567-0387 |            |            |            |            |            |            | 30          |
| 32          | 15-80-0327 | A-70567-0218 | 70567-0252 | A-70567-0252 | 15-80-0329 | A-70567-0286 | 70567-0320 | A-70567-0320 | 15-80-1321 | A-70567-0354 | 70567-0388 | A-70567-0388 |            |            |            |            |            |            | 32          |
| 34          | 15-80-0347 | A-70567-0219 | 70567-0253 | A-70567-0253 | 15-80-0349 | A-70567-0287 | 70567-0321 | A-70567-0321 | 15-80-1341 | A-70567-0355 | 70567-0389 | A-70567-0389 |            |            |            |            |            |            | 34          |
| 36          | 15-80-0367 | A-70567-0220 | 70567-0254 | A-70567-0254 | 15-80-0369 | A-70567-0288 | 70567-0322 | A-70567-0322 | 15-80-1361 | A-70567-0356 | 70567-0390 | A-70567-0390 |            |            |            |            |            |            | 36          |
| 38          | 15-80-0387 | A-70567-0221 | 70567-0255 | A-70567-0255 | 15-80-0389 | A-70567-0289 | 70567-0323 | A-70567-0323 | 15-80-1381 | A-70567-0357 | 70567-0391 | A-70567-0391 |            |            |            |            |            |            | 38          |
| 40          | 15-80-0407 | A-70567-0222 | 70567-0256 | A-70567-0256 | 15-80-0409 | A-70567-0290 | 70567-0324 | A-70567-0324 | 15-80-1401 | A-70567-0358 | 70567-0392 | A-70567-0392 |            |            |            |            |            |            | 40          |
| 42          | 15-80-0427 | A-70567-0223 | 70567-0257 | A-70567-0257 | 15-80-0429 | A-70567-0291 | 70567-0325 | A-70567-0325 | 15-80-1421 | A-70567-0359 | 70567-0393 | A-70567-0393 |            |            |            |            |            |            | 42          |
| 44          | 15-80-0447 | A-70567-0224 | 70567-0258 | A-70567-0258 | 15-80-0449 | A-70567-0292 | 70567-0326 | A-70567-0326 | 15-80-1441 | A-70567-0360 | 70567-0394 | A-70567-0394 |            |            |            |            |            |            | 44          |
| 46          | 15-80-0467 | A-70567-0225 | 70567-0259 | A-70567-0259 | 15-80-0469 | A-70567-0293 | 70567-0327 | A-70567-0327 | 15-80-1461 | A-70567-0361 | 70567-0395 | A-70567-0395 |            |            |            |            |            |            | 46          |
| 48          | 15-80-0487 | A-70567-0226 | 70567-0260 | A-70567-0260 | 15-80-0489 | A-70567-0294 | 70567-0328 | A-70567-0328 | 15-80-1481 | A-70567-0362 | 70567-0396 | A-70567-0396 |            |            |            |            |            |            | 48          |
| 50          | 15-80-0507 | A-70567-0227 | 70567-0261 | A-70567-0261 | 15-80-0509 | A-70567-0295 | 70567-0329 | A-70567-0329 | 15-80-1501 | A-70567-0363 | 70567-0397 | A-70567-0397 |            |            |            |            |            |            | 50          |
| 52          | 15-80-0527 | A-70567-0228 | 70567-0262 | A-70567-0262 | 15-80-0529 | A-70567-0296 | 70567-0330 | A-70567-0330 | 15-80-1521 | A-70567-0364 | 70567-0398 | A-70567-0398 |            |            |            |            |            |            | 52          |
| 54          | 15-80-0547 | A-70567-0229 | 70567-0263 | A-70567-0263 | 15-80-0549 | A-70567-0297 | 70567-0331 | A-70567-0331 | 15-80-1541 | A-70567-0365 | 70567-0399 | A-70567-0399 |            |            |            |            |            |            | 54          |
| 56          | 15-80-0567 | A-70567-0230 | 70567-0264 | A-70567-0264 | 15-80-0569 | A-70567-0298 | 70567-0332 | A-70567-0332 | 15-80-1561 | A-70567-0366 | 70567-0400 | A-70567-0400 |            |            |            |            |            |            | 56          |
| 58          | 15-80-0587 | A-70567-0231 | 70567-0265 | A-70567-0265 | 15-80-0589 | A-70567-0299 | 70567-0333 | A-70567-0333 | 15-80-1581 | A-70567-0367 | 70567-0401 | A-70567-0401 |            |            |            |            |            |            | 58          |
| 60          | 15-80-0607 | A-70567-0232 | 70567-0266 | A-70567-0266 | 15-80-0609 | A-70567-0300 | 70567-0334 | A-70567-0334 | 15-80-1601 | A-70567-0368 | 70567-0402 | A-70567-0402 |            |            |            |            |            |            | 60          |
| 62          | 15-80-0627 | A-70567-0233 | 70567-0267 | A-70567-0267 | 15-80-0629 | A-70567-0301 | 70567-0335 | A-70567-0335 | 15-80-1621 | A-70567-0369 | 70567-0403 | A-70567-0403 |            |            |            |            |            |            | 62          |
| 64          | 15-80-0647 | A-70567-0234 | 70567-0268 | A-70567-0268 | 15-80-0649 | A-70567-0302 | 70567-0336 | A-70567-0336 | 15-80-1641 | A-70567-0370 | 70567-0404 | A-70567-0404 |            |            |            |            |            |            | 64          |
| 66          | 15-80-0667 | A-70567-0235 | 70567-0269 | A-70567-0269 | 15-80-0669 | A-70567-0303 | 70567-0337 | A-70567-0337 | 15-80-1661 | A-70567-0371 | 70567-0405 | A-70567-0405 |            |            |            |            |            |            | 66          |
| 68          | 15-80-0687 | A-70567-0236 | 70567-0270 | A-70567-0270 | 15-80-0689 | A-70567-0304 | 70567-0338 | A-70567-0338 | 15-80-1681 | A-70567-0372 | 70567-0406 | A-70567-0406 |            |            |            |            |            |            | 68          |
| 70          | 15-80-0707 | A-70567-0237 | 70567-0271 | A-70567-0271 | 15-80-0709 | A-70567-0305 | 70567-0339 | A-70567-0339 | 15-80-1701 | A-70567-0373 | 70567-0407 | A-70567-0407 |            |            |            |            |            |            | 70          |
| 72          | 15-80-0727 | A-70567-0238 | 70567-0272 | A-70567-0272 | 15-80-0729 | A-70567-0306 | 70567-0340 | A-70567-0340 | 15-80-1721 | A-70567-0374 | 70567-0408 | A-70567-0408 |            |            |            |            |            |            | 72          |

|                                                                                                                                                 |                                                      |                                       |                 |       |                |                          |
|-------------------------------------------------------------------------------------------------------------------------------------------------|------------------------------------------------------|---------------------------------------|-----------------|-------|----------------|--------------------------|
| <b>SEE SHEETS 1 &amp; 2</b><br>EC NO. UCT 2010-1587<br>DRAWN BY CHKOBBARKER 2010/01/12<br>CHECKED BY APPR:SMILLER 2010/03/31<br>REV DESCRIPTION | QUALITY SYMBOLS                                      | GENERAL TOLERANCES (UNLESS SPECIFIED) | DIMENSION STYLE | SCALE | DESIGN UNITS   | THIRD ANGLE PROJECTION   |
|                                                                                                                                                 | ▽=0                                                  | 4 PLACES ±.005                        | MM/IN           | 1:1   | INCH           | 4 SIDES SHROUDED HEADER  |
|                                                                                                                                                 | ▽=0                                                  | 3 PLACES ±.010                        |                 |       |                | HIGH TEMP. (2.54)/100    |
|                                                                                                                                                 | ▽=0                                                  | 2 PLACES ±.013                        |                 |       |                | GRID W/ (0.64)/0.25 PINS |
|                                                                                                                                                 |                                                      | 1 PLACE ±.025                         |                 |       |                | MOLEX INCORPORATED       |
|                                                                                                                                                 |                                                      | ANGULAR ±1/2°                         |                 |       |                |                          |
|                                                                                                                                                 | DRAFT WHERE APPLICABLE MUST REMAIN WITHIN DIMENSIONS |                                       | SEE TABLE       |       | SDA-70567-**** |                          |
|                                                                                                                                                 |                                                      |                                       |                 |       |                |                          |

