

**PLEASE CHECK WWW.MOLEX.COM FOR LATEST PART INFORMATION**

**Part Number:** [0050375133](#)  
**Status:** **Active**  
**Overview:** [spox](#)  
**Description:** 2.50mm (.098") Pitch SPOX™ Wire-to-Board Crimp Housing, Friction Lock, 13 Circuits

**Documents:**

[3D Model](#) [Product Specification PS-5264-001 \(PDF\)](#)  
[Drawing \(PDF\)](#) [RoHS Certificate of Compliance \(PDF\)](#)

**Agency Certification**

CSA LR37272  
 UL E29179

**General**

Product Family Crimp Housings  
 Series [5264](#)  
 Overview [spox](#)  
 Product Name SPOX™

**Physical**

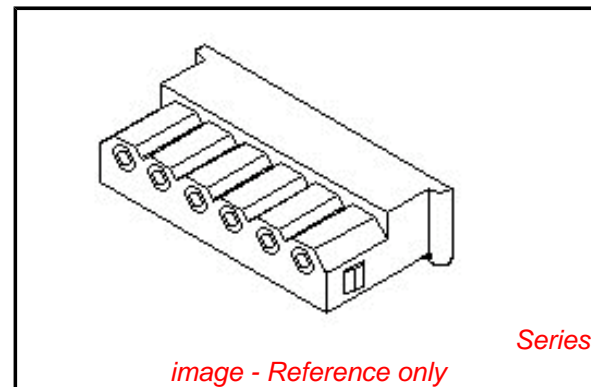
Circuits (maximum) 13  
 Flammability 94V-0  
 Gender Female  
 Glow-Wire Compliant No  
 Number of Rows 1  
 Packaging Type Bag  
 Panel Mount No  
 Pitch - Mating Interface (in) 0.098 In  
 Pitch - Mating Interface (mm) 2.50 mm  
 Polarized to Mating Part Yes  
 Stackable No  
 Temperature Range - Operating -40°C to +105°C

**Material Info**

Old Part Number 5264-13

**Reference - Drawing Numbers**

Packaging Specification SPK-5264-001  
 Product Specification PS-5264-001, RPS-5264-001, RPS-5264-002,  
 RPS-5264-003, RPS-5264-004, RPS-5264-005,  
 RPS-5264-006  
 Sales Drawing SD-5264-N



**EU RoHS**

**ELV and RoHS  
 Compliant**  
**REACH SVHC  
 Contains SVHC: No**  
**Halogen-Free  
 Status**

**China RoHS**



**Not Halogen-Free**

**Need more information on product  
 environmental compliance?**

Email [productcompliance@molex.com](mailto:productcompliance@molex.com)  
 For a multiple part number RoHS Certificate of  
 Compliance, [click here](#)

Please visit the [Contact Us](#) section for any  
 non-product compliance questions.

**Search Parts in this Series**

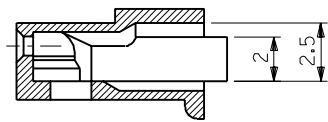
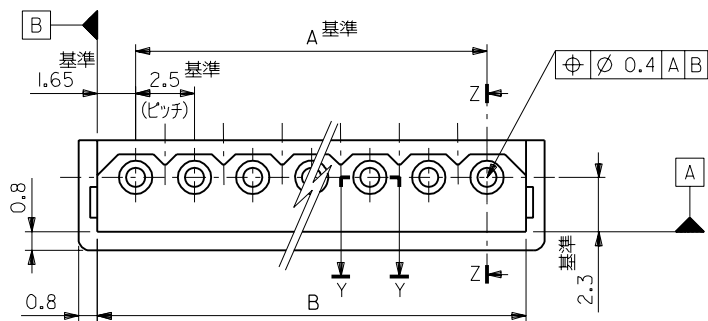
[5264Series](#)

**Mates With**

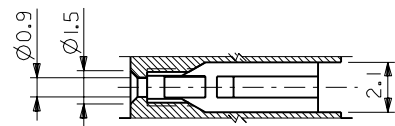
[5267](#) vertical shrouded PCB header, [5268](#)  
 right angle shrouded PCB header

**Use With**

[5263](#)



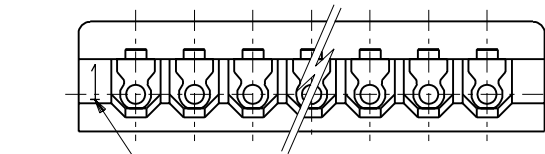
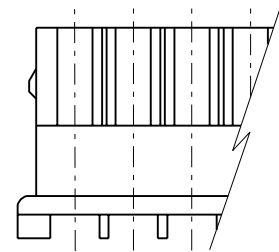
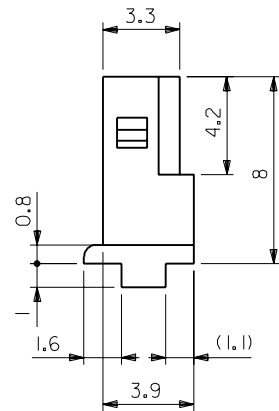
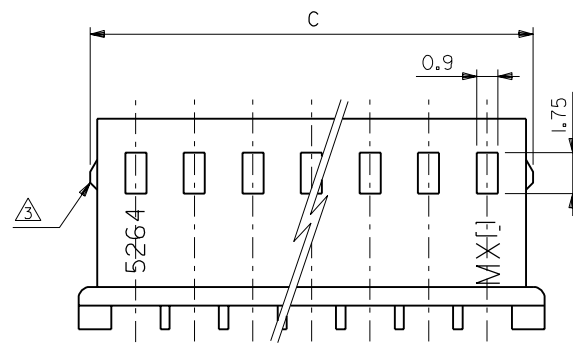
断面 Z-Z



断面 Y-Y

注記:

- 適合端子: 5263PBT
- 嵌合相手: 5267 シリーズ, 5268 シリーズ
- △ 9極以上はロックなし。

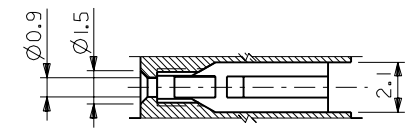
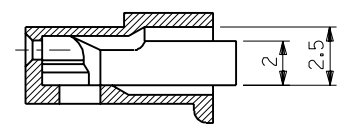
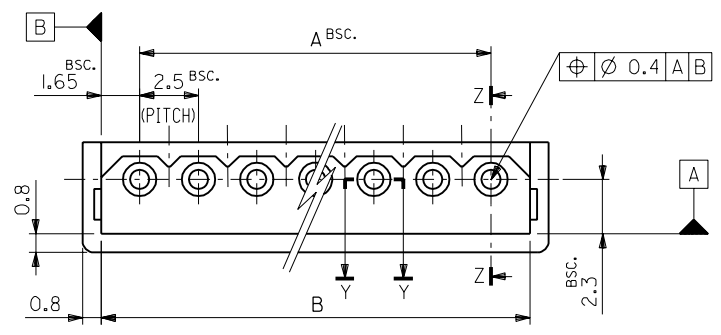


CIRCUIT NO.

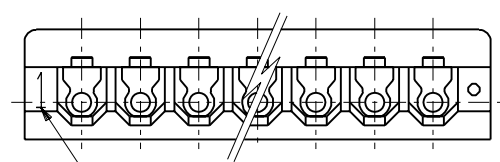
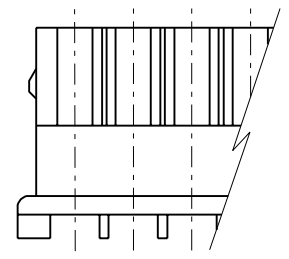
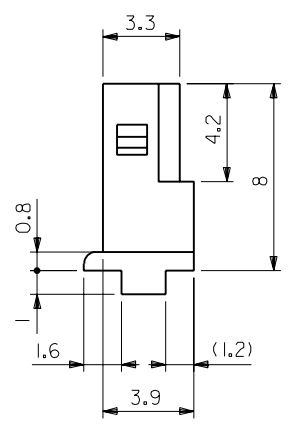
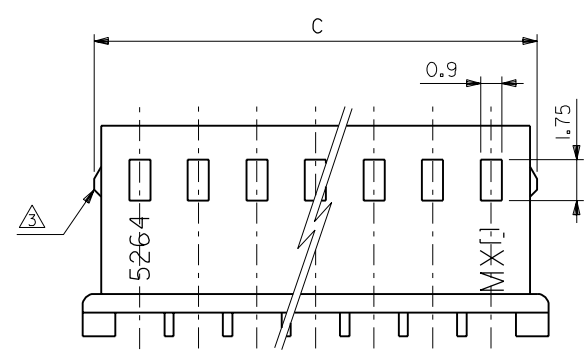
	38.3	35	50-37-5153	5264-15	15
	35.8	32.5	↑ -5143	↑ -14	14
	33.3	30	↑ -5133	↑ -13	13
	30.8	27.5	↑ -5123	↑ -12	12
	28.3	25	↑ -5113	↑ -11	11
	25.8	22.5	↑ -5103	↑ -10	10
	23.3	20	↑ -5093	↑ -09	9
	21.4	20.8	↑ -5083	↑ -08	8
	18.9	18.3	↑ -5073	↑ -07	7
	16.4	15.8	↑ -5063	↑ -06	6
	13.9	13.3	↑ -5053	↑ -05	5
	11.4	10.8	↑ -5043	↑ -04	4
	8.9	8.3	↑ -5033	↑ -03	3
	6.4	5.8	↑ -5023	↑ -02	2
C	B	A	EDP NO.	ENG. NO.	極数

角度 ANGLE		±3°							材料 MATERIAL	66ナイロン UL94V-0	MOLEX JAPAN CO., LTD. 日本モレックス株式会社	
30以上 OVER		+0.3						仕上げ FINISH	—	EDP. NO.		50-37-5**3
10以上 30未滿 UNDER		+0.25	H	再作図及び変更	U10590	K-1	9/17/26	適用電線範囲 WIRE RANGE	—	ENG. NO.	SD-5264-N	
10未滿 UNDER		+0.2	記号 LTR	変更内容	DR. CHK. DATE			被覆外径 INS. RANGE	—	REV	H	
一般公差 GENERAL TOLERANCES			REVISION RECORD						DRAWN BY	CHK'D BY	TITLE 名称	
			REVISION RECORD						K.TOJO '91/7/26	M.FUKUSHIMA	2.5 LOW PROFILE RECEPTACLE HOUSING	
			REVISION RECORD						APP'D BY '91/07/30	M.ENOMOTO	尺 度 SCALE 5-1	

THIS DRAWING CONTAINS INFORMATION THAT IS PROPRIETARY TO MOLEX(JAPAN) AND SHOULD NOT BE USED WITHOUT WRITTEN PERMISSION  
 本図面は日本モレックス(株)の所有する情報を含むもので 当社の許可なく複製を禁止する。



NOTES:  
 1. SUITABLE TERMINAL : 5263SERIES  
 2. MATES WITH : 5267SERIES,5268SERIES  
 3. 9 CIRCUITS OR MORE WITHOUT LOOK.



	50.8	47.5	50-37-5203	5264-20	20	
	48.3	45	-5193	-19	19	
	45.8	42.5	-5183	-18	18	
	43.3	40	-5173	-17	17	
	40.8	37.5	-5163	-16	16	
	38.3	35	-5153	-15	15	
	35.8	32.5	-5143	-14	14	
	33.3	30	-5133	-13	13	
	30.8	27.5	-5123	-12	12	
	28.3	25	-5113	-11	11	
	25.8	22.5	-5103	-10	10	
	23.3	20	-5093	-09	9	
	21.4	20.8	17.5	-5083	-08	8
	18.9	18.3	15	-5073	-07	7
	16.4	15.8	12.5	-5063	-06	6
	13.9	13.3	10	-5053	-05	5
	11.4	10.8	7.5	-5043	-04	4
	8.9	8.3	5	-5033	-03	3
	6.4	5.8	2.5	50-37-5023	5264-02	2
	C	B	A	EDP NO.	ENG.NO.	CKT.

角度 ANGLE ±3° 30以上 OVER ±0.3 10以上 30未滿 UNDER ±0.25 10未滿 UNDER ±0.2 一般公差 GENERAL TOLERANCES		H REVISED & REDRAWN (J105910) 記号 LTR 変更内容 REVISION RECORD DR. CHK. DATE		K.T. H.A. 9/11/15 日付 DATE 材料 MATERIAL 66NYLON,UL94V-0 仕上げ FINISH // 適用電線範囲 WIRE RANGE // 被覆外径 INS. RANGE // DRAWN BY K.TOJO '91/11/5 APP'D BY M.ENOMOTO '92/01/15 CHK'D BY M.FUKUSHIMA '92/01/15 尺度 SCALE 5-1		MOLEX-JAPAN CO.,LTD. 日本モレックス株式会社 EDP. NO. 50-37-5**3 ENG. NO. SD-5264-N TITLE 名称 2.5 LOW PROFILE RECEPTACLE HOUSING REV H	
---	--	---	--	--	--	--	--