

**PLEASE CHECK WWW.MOLEX.COM FOR LATEST PART INFORMATION**

**Part Number:** [1120260013](#)  
**Status:** **Active**  
**Description:** Connect Profibus to Modbus Serial devices

**Documents:**

[Drawing \(PDF\)](#) [RoHS Certificate of Compliance \(PDF\)](#)

**General**

Product Family	Network Interface
Series	<a href="#">112034</a>
Approvals	CE
Comments	Profibus. - DP Slave. . Serial.: - Modbus Master/Slave (ASCII/RTU). - Free Send/Rec (ASCII/RTU)
Communication Speed	Profibus: 9.6 kbps to 12 Mbps, Serial: 600 to 57,600 bps
Mounting Style	DIN Rail
Product Name	Direct-Link®
Protocol	Profibus*, Serial
Type	N/A

**Physical**

Channels	1
Interface	Profibus* - Serial
Network Connection Type	Profibus* D-Sub Female (9 pin), Serial: Screw Terminal
Packaging Type	Carton
Processor	N/A
Temperature Range - Operating	0°C to +55°C

**Electrical**

EMC	N/A
Supply Voltage	24V

**Material Info**

Old Part Number	DRL-DPS-SRM
-----------------	-------------

**Reference - Drawing Numbers**

Sales Drawing	SD-112026-0013
---------------	----------------

**EU RoHS**

**ELV and RoHS  
Compliant**  
**REACH SVHC  
Not Reviewed**  
**Halogen-Free  
Status  
Not Reviewed**

**China RoHS**



**Need more information on product environmental compliance?**

Email [productcompliance@molex.com](mailto:productcompliance@molex.com)  
 For a multiple part number RoHS Certificate of Compliance, [click here](#)

Please visit the [Contact Us](#) section for any non-product compliance questions.

**Search Parts in this Series**

[112034Series](#)

**PLEASE CHECK WWW.MOLEX.COM FOR LATEST PART INFORMATION**



The BradCommunications™ Direct-Link™ gateway for PROFIBUS provides a quick and cost effective connection between controller and field devices used on different industrial networks.

## PROFIBUS Gateway

Connect PROFIBUS to Modbus Serial devices

### Features

- PROFIBUS-DP V0 Slave to Modbus Serial protocol conversion
- Modbus Master or Slave RTU/ASCII
- Manages up to 20 Modbus Slaves
- Easy-to-use configuration by GSD file (no configuration tool needed)
- Rotary switches for PROFIBUS Address
- Automatic reconfiguration after replacement by the PROFIBUS Master (Set\_Param command)
- Serial RS232 or RS485 switch selectable
- Full diagnostic through LEDs, dedicated RS232 port and Slave\_Diag information
- Up to 244 Input bytes and 244 Output bytes on PROFIBUS
- Up to 20 Modbus Read and Write commands with Cyclic, Change of State or once triggers
- DIN rail mounting, IP20

### Typical Applications

- Connecting Serial devices to PROFIBUS networks
- Integration of legacy devices such as in the machine tool industry
- Well suited for simple network extensions



### Product Description

The BradCommunications™ Direct-Link™ gateway for PROFIBUS is built to enable the quick and cost effective connection of any Modbus device to a PROFIBUS-DP fieldbus. It is well suited for simple network extensions or the integration of legacy devices such as in the machine tool industry.

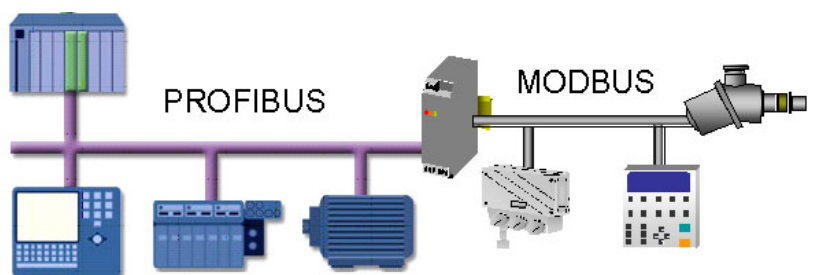
The BradCommunications Direct-Link gateway can act as a PROFIBUS-DP Slave on one side, and a MODBUS Master or Slave on the other side.

The gateway is built into the system without any lines of code. All parameters are set in a very user friendly way, via the usual PROFIBUS configuration tool. All the parameters are sent to the gateway automatically by the PROFIBUS Master at each network initialisation, permitting the replacement of the gateway without any configuration action.

Moreover, the Direct-Link gateway for PROFIBUS can drive up to 20 Modbus Slaves. It can exchange up to 244 bytes of inputs, and 244 bytes of outputs on PROFIBUS .

To complete the pre-defined Modbus commands, a "Pass Frame" mode is implemented to allow the composition of the Modbus commands directly from the PROFIBUS-DP buffer.

A standard Sub-DB9 Female connector provides the PROFIBUS interface and Plug Screw Terminal for Serial interface and Power Supply.



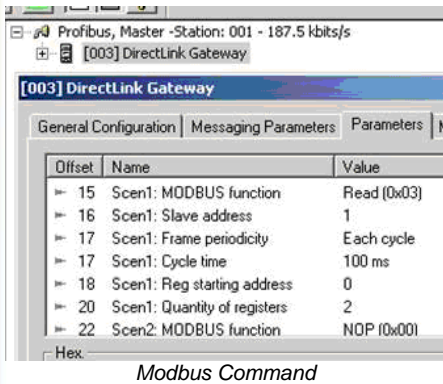
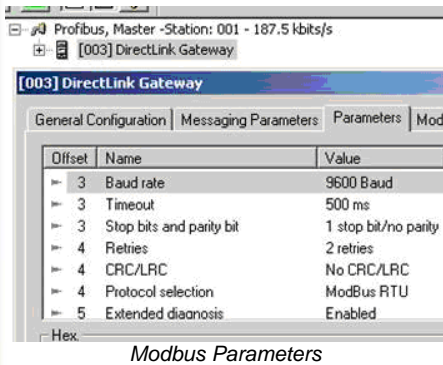
**BradCommunications™**

# PROFIBUS Gateway



## Software Tools

Example of configuration through the configuration tool of the PROFIBUS Master:



## Dimensions



## Hardware and Network Specifications

Physical Characteristics	
Case	Plastic case for rail DIN
Size	120 x 100 x 23 mm
Weight	~ 100g
Temperature	<b>Operating:</b> 0°C to +55°C <b>Non-operating:</b> -25°C to +70°C
Humidity	Max. 80%
Ingress Protection	IP20
Power Supply	24V DC (1.5W)
Indicator (6 LEDs)	1 - Power ON    4 - RUN 2 - Bus failed    5 - TxD Modbus 3 - Diagnostic    6 - RxD Modbus
Protection Polarity inversion	Yes
Protection Short-circuits	Yes
CE Compliance	Yes

Communication Ports		
PROFIBUS-DP	Baud rate	9.6 kbps to 12 Mbps (auto-detection)
	Connector	Sub-D9 female
	Address setting	2 hexadecimal rotary switches
	Diagnostic	27 bytes of extended diagnostic (Slave_Diag)
	Input/Output Bytes	0-244, maximum of 300
	Isolation	1 kV
	Technology	ASIC
	Others	Sync, Freeze
Modbus Serial	Commissioning	Done from the PROFIBUS configuration tool (via scroll down menus) by using GSD parameters
	Baud rate	0.6 to 57.6 Kbps
	Protocol	RTU and ASCII
	Nb of addressable Slaves	20
	Nb of frames	1 to 20 different
	Frame trigger	Cyclic, on change, once
	Nb of accessible registers (Maximum of 150)	1-122 read registers 1-122 write registers
	Connector	Open connector 3 contacts, male
	Switching RS232/485	Configurable by switch
	Terminator Resistor	120 Ω by switch
Implemented functions	3 - Multi register Read 4 - Multi register Read 5 - Single Boolean writing 6 - Single register Write 7 - Read Status 16 - Multi register Write 23 - Multi register Read/Write (Slave mode only) Other - Open command through Pass Frame mechanism	

## Ordering Information

Part Number	Description
DRL-DPS-SRM	BradCommunications™ Direct-Link™ PROFIBUS to Modbus Serial Gateway

CR Rom with detailed user documentation in French and English languages and the GSD file are included in delivery.

Contact us: [www.woodhead.com](http://www.woodhead.com)

Reference Number: DW2005118

Date published: June 2006

**BradCommunications™**  
from Woodhead Industries

North America: US + 1-800-2257724 - Canada, +1 519 725 5136

Europe: France, +33 2 32 96 04 20 - Germany, +49 711 78 23 74-0 - Italy, +39 010 59 30 77 - United Kingdom, +44 1495 356300

Asia: China, +86 21 5835-9885 - Singapore, +65 6261-6533 - Japan, +81 3 5791 4621

BradCommunications™, and Direct-Link™ are trademarks of Woodhead Industries, Inc.  
© 2006 Woodhead Industries, a division of Molex Incorporated