

**PLEASE CHECK WWW.MOLEX.COM FOR LATEST PART INFORMATION**

**Part Number:** [0879114011](#)  
**Status:** **Active**  
**Overview:** [cgrid\\_sl\\_products](#)  
**Description:** 2.54mm (.100") Pitch C-Grid® Header, Right Angle, Through Hole, 40 Circuits, 0.38µm (15µ") Gold (Au) Selective Plating, Tube Packaging, Lead-free

**Documents:**

[3D Model](#) [RoHS Certificate of Compliance \(PDF\)](#)  
[Drawing \(PDF\)](#)

**Agency Certification**

UL E29179

**General**

Product Family PCB Headers  
 Series [87911](#)  
 Application Board-to-Board, Wire-to-Board  
 Overview [cgrid\\_sl\\_products](#)  
 Product Name C-Grid®

**Physical**

Breakaway Yes  
 Circuits (Loaded) 40  
 Circuits (maximum) 40  
 Color - Resin Black  
 First Mate / Last Break No  
 Flammability 94V-0  
 Glow-Wire Compliant No  
 Guide to Mating Part No  
 Keying to Mating Part None  
 Lock to Mating Part None  
 Material - Metal Copper Alloy  
 Material - Plating Mating Gold  
 Material - Plating Termination Tin  
 Material - Resin High Temperature Thermoplastic  
 Number of Rows 2  
 Orientation Right Angle  
 PC Tail Length (in) 0.125 In  
 PC Tail Length (mm) 3.18 mm  
 PCB Locator No  
 PCB Retention None  
 PCB Thickness Recommended (in) 0.062 In  
 PCB Thickness Recommended (mm) 1.60 mm  
 Packaging Type Tube  
 Pitch - Mating Interface (in) 0.100 In  
 Pitch - Mating Interface (mm) 2.54 mm  
 Pitch - Term. Interface (in) 0.100 In  
 Pitch - Term. Interface (mm) 2.54 mm  
 Plating min: Mating (µin) 15  
 Plating min: Mating (µm) 0.38  
 Polarized to Mating Part No  
 Polarized to PCB No  
 Shrouded No  
 Stackable No  
 Surface Mount Compatible (SMC) Yes  
 Temperature Range - Operating -55°C to +105°C

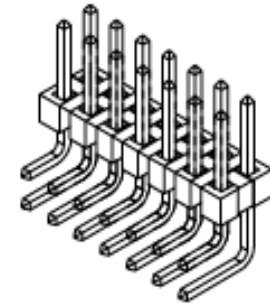


image - Reference only

Series

**EU RoHS**

**ELV and RoHS Compliant**  
**REACH SVHC**  
 Not Reviewed  
**Halogen-Free Status**

**China RoHS**



**Not Reviewed**

**Need more information on product environmental compliance?**

Email [productcompliance@molex.com](mailto:productcompliance@molex.com)  
 For a multiple part number RoHS Certificate of Compliance, [click here](#)

Please visit the [Contact Us](#) section for any non-product compliance questions.

**Search Parts in this Series**

[87911Series](#)

**Mates With**

7859 Shunts. C-Grid® PCB Receptacles like 71850. [SL™](#) IDT Housing like 70450

Termination Interface: Style

Through Hole

**Electrical**

Current - Maximum per Contact

3A

Voltage - Maximum

250V

**Material Info**

**Reference - Drawing Numbers**

Sales Drawing

SD-87911-027

This document was generated on 05/25/2010

**PLEASE CHECK [WWW.MOLEX.COM](http://WWW.MOLEX.COM) FOR LATEST PART INFORMATION**

10 9 8 7 6 5 4 3 2 1

F

E

D

C

B

A

F

E

D

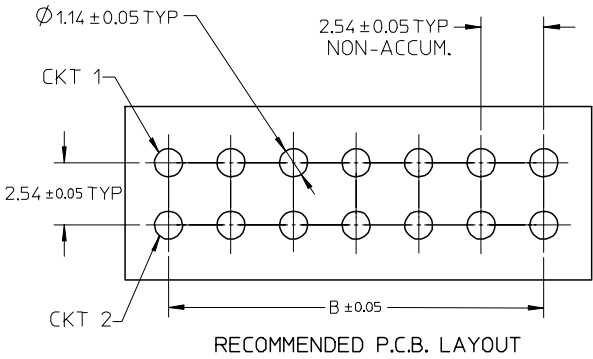
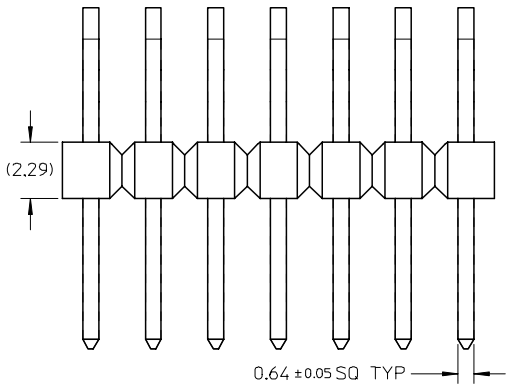
C

B

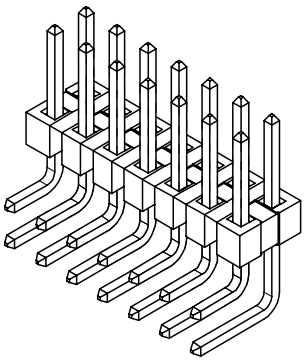
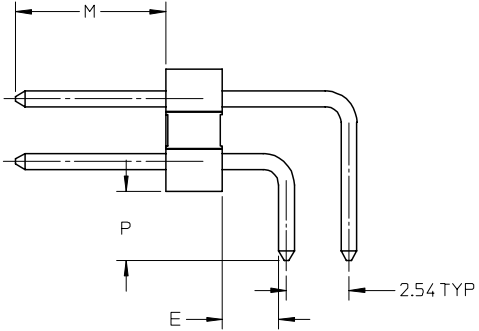
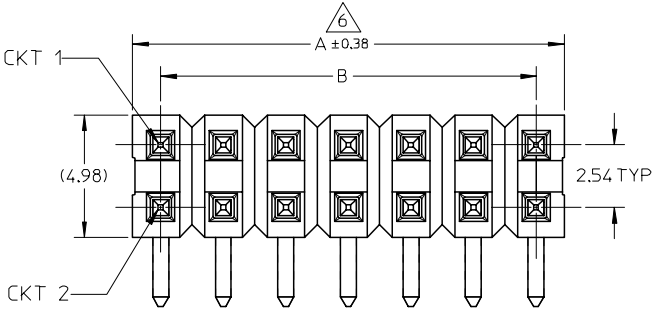
A

NOTE:

1. MATERIAL:
  - HOUSING: - LCP, GLASS FILLED, UL94V-0
  - COLOR: BLACK
  - TERMINAL: - COPPER ALLOY, 0.64MM SQ
2. PLATING TYPE:
  - 1) 15µin MIN. GOLD PLATE ON CONTACT AND 75µin MIN. TIN ON SOLDER TAIL OVER 50µin MIN. NICKEL OVERALL.
  - 2) 30µin MIN. GOLD PLATE ON CONTACT AND 75µin MIN. TIN ON SOLDER TAIL OVER 50µin MIN. NICKEL OVERALL.
  - 3) 100µin MIN. TIN OVERALL. 50µin MIN. NICKEL OVERALL.
3. THE ABOVE 14 CKT SHOWN IS FOR ILLUSTRATION ONLY..
4. PIN PUSHOUT FORCE: 1KG MIN. IN EITHER DIRECTION
5. PART TO BE PACKED IN TUBE.
6. IRREGULAR CIRCUIT CUTOFF WITHIN BREAKAWAY SECTION IS PERMISSIBLE. CUTTING OR CHIPPING OF THE MAIN BODY IS NOT ACCEPTABLE
7. RECOMMENDED PCB THICKNESS = 1.60±0.10mm
8. PRODUCT SPECIFICATION: PS-87920-019
9. PACKAGING SPECIFICATION: PK-89990-519



RECOMMENDED P.C.B. LAYOUT



|   |                               |   |  |                            |  |   |                        |  |  |                     |
|---|-------------------------------|---|--|----------------------------|--|---|------------------------|--|--|---------------------|
| REVISED<br>EC NO: S2007-0544<br>DRWNS:SKLIM01 2006/12/13<br>CHKD:CWLM 2006/12/19<br>APPR:KWLEE 2006/12/27 | QUALITY SYMBOLS<br>▽=0<br>▽=0 | GENERAL TOLERANCES (UNLESS SPECIFIED)                   |  | DIMENSION STYLE<br>MM ONLY |  | SCALE<br>NTS  | DESIGN UNITS<br>METRIC | THIRD ANGLE PROJECTION   |  |                     |
|   |                               |   |  | DRAWN BY<br>YLQ1A0         |  | DATE<br>2005/01/17  |                        | TITLE<br>CUSTOM HEADER<br>C-GRID DUAL ROW HEADER<br>RIGHT ANGLE THROUGH HOLE |  |                     |
|   |                               |   |  | CHECKED BY<br>PTLIM        |  | DATE<br>2005/01/25  |                        | MOLEX INCORPORATED   |  | SHEET NO.<br>1 OF 4 |
|   |                               |   |  | APPROVED BY<br>SCLOW       |  | DATE<br>2005/01/25  |                        | DOCUMENT NO.<br>SD-87911-027   |  |                     |
|   |                               | DRAFT WHERE APPLICABLE<br>MUST REMAIN WITHIN DIMENSIONS |  | SEE TABLE                  |  | THIS DRAWING CONTAINS INFORMATION THAT IS PROPRIETARY TO MOLEX INCORPORATED AND SHOULD NOT BE USED WITHOUT WRITTEN PERMISSION |                        |  |  |                     |

9 8 7 6 5 4 3 2 1

| PART NO.   | CKT SIZE | VOID POSITION | PLATING TYPE | DIMENSION |       |      |      |      |
|------------|----------|---------------|--------------|-----------|-------|------|------|------|
|            |          |               |              | A         | B     | M    | P    | E    |
| 87911-0411 | 4        | -----         | 1            | 5.08      | 2.54  | 6.10 | 3.18 | 2.27 |
| 87911-0412 | 4        | -----         | 2            | 5.08      | 2.54  | 6.10 | 3.18 | 2.27 |
| 87911-0413 | 4        | -----         | 3            | 5.08      | 2.54  | 6.10 | 3.18 | 2.27 |
| 87911-0611 | 6        | -----         | 1            | 7.62      | 5.08  | 6.10 | 3.18 | 2.27 |
| 87911-0612 | 6        | -----         | 2            | 7.62      | 5.08  | 6.10 | 3.18 | 2.27 |
| 87911-0613 | 6        | -----         | 3            | 7.62      | 5.08  | 6.10 | 3.18 | 2.27 |
| 87911-0811 | 8        | -----         | 1            | 10.16     | 7.62  | 6.10 | 3.18 | 2.27 |
| 87911-0812 | 8        | -----         | 2            | 10.16     | 7.62  | 6.10 | 3.18 | 2.27 |
| 87911-0813 | 8        | -----         | 3            | 10.16     | 7.62  | 6.10 | 3.18 | 2.27 |
| 87911-0800 | 8        | -----         | 1            | 10.16     | 7.62  | 6.10 | 2.79 | 2.29 |
| 87911-1011 | 10       | -----         | 1            | 12.70     | 10.16 | 6.10 | 3.18 | 2.27 |
| 87911-1012 | 10       | -----         | 2            | 12.70     | 10.16 | 6.10 | 3.18 | 2.27 |
| 87911-1013 | 10       | -----         | 3            | 12.70     | 10.16 | 6.10 | 3.18 | 2.27 |
| 87911-1211 | 12       | -----         | 1            | 15.24     | 12.70 | 6.10 | 3.18 | 2.27 |
| 87911-1212 | 12       | -----         | 2            | 15.24     | 12.70 | 6.10 | 3.18 | 2.27 |
| 87911-1213 | 12       | -----         | 3            | 15.24     | 12.70 | 6.10 | 3.18 | 2.27 |
| 87911-1411 | 14       | -----         | 1            | 17.78     | 15.24 | 6.10 | 3.18 | 2.27 |
| 87911-1412 | 14       | -----         | 2            | 17.78     | 15.24 | 6.10 | 3.18 | 2.27 |
| 87911-1413 | 14       | -----         | 3            | 17.78     | 15.24 | 6.10 | 3.18 | 2.27 |
| 87911-1611 | 16       | -----         | 1            | 20.32     | 17.78 | 6.10 | 3.18 | 2.27 |
| 87911-1612 | 16       | -----         | 2            | 20.32     | 17.78 | 6.10 | 3.18 | 2.27 |
| 87911-1613 | 16       | -----         | 3            | 20.32     | 17.78 | 6.10 | 3.18 | 2.27 |

| PART NO.   | CKT SIZE | VOID POSITION | PLATING TYPE | DIMENSION |       |      |      |      |
|------------|----------|---------------|--------------|-----------|-------|------|------|------|
|            |          |               |              | A         | B     | M    | P    | E    |
| 87911-1811 | 18       | -----         | 1            | 22.86     | 20.32 | 6.10 | 3.18 | 2.27 |
| 87911-1812 | 18       | -----         | 2            | 22.86     | 20.32 | 6.10 | 3.18 | 2.27 |
| 87911-1813 | 18       | -----         | 3            | 22.86     | 20.32 | 6.10 | 3.18 | 2.27 |
| 87911-2011 | 20       | -----         | 1            | 25.40     | 22.86 | 6.10 | 3.18 | 2.27 |
| 87911-2012 | 20       | -----         | 2            | 25.40     | 22.86 | 6.10 | 3.18 | 2.27 |
| 87911-2013 | 20       | -----         | 3            | 25.40     | 22.86 | 6.10 | 3.18 | 2.27 |
| 87911-2211 | 22       | -----         | 1            | 27.94     | 25.40 | 6.10 | 3.18 | 2.27 |
| 87911-2212 | 22       | -----         | 2            | 27.94     | 25.40 | 6.10 | 3.18 | 2.27 |
| 87911-2213 | 22       | -----         | 3            | 27.94     | 25.40 | 6.10 | 3.18 | 2.27 |
| 87911-2411 | 24       | -----         | 1            | 30.48     | 27.94 | 6.10 | 3.18 | 2.27 |
| 87911-2412 | 24       | -----         | 2            | 30.48     | 27.94 | 6.10 | 3.18 | 2.27 |
| 87911-2413 | 24       | -----         | 3            | 30.48     | 27.94 | 6.10 | 3.18 | 2.27 |
| 87911-2611 | 26       | -----         | 1            | 33.02     | 30.48 | 6.10 | 3.18 | 2.27 |
| 87911-2612 | 26       | -----         | 2            | 33.02     | 30.48 | 6.10 | 3.18 | 2.27 |
| 87911-2613 | 26       | -----         | 3            | 33.02     | 30.48 | 6.10 | 3.18 | 2.27 |
| 87911-2811 | 28       | -----         | 1            | 35.56     | 33.02 | 6.10 | 3.18 | 2.27 |
| 87911-2812 | 28       | -----         | 2            | 35.56     | 33.02 | 6.10 | 3.18 | 2.27 |
| 87911-2813 | 28       | -----         | 3            | 35.56     | 33.02 | 6.10 | 3.18 | 2.27 |
| 87911-3011 | 30       | -----         | 1            | 38.10     | 35.56 | 6.10 | 3.18 | 2.27 |
| 87911-3012 | 30       | -----         | 2            | 38.10     | 35.56 | 6.10 | 3.18 | 2.27 |
| 87911-3013 | 30       | -----         | 3            | 38.10     | 35.56 | 6.10 | 3.18 | 2.27 |

REVISED  
 EC NO: S2007-0544  
 DRWNS:KLI M01 2006/12/19  
 CHKD:CWJAM 2006/12/19  
 APPR:KWLEE 2006/12/27

QUALITY SYMBOLS  
 =0  
 =0

GENERAL TOLERANCES (UNLESS SPECIFIED)

|          | mm     | INCH    |
|----------|--------|---------|
| 4 PLACES | ± .005 | ± .0002 |
| 3 PLACES | ± .005 | ± .0002 |
| 2 PLACES | ± 0.2  | ± .008  |
| 1 PLACE  | ± .005 | ± .0002 |

ANGULAR ± 3 °

DRAFT WHERE APPLICABLE  
 MUST REMAIN WITHIN DIMENSIONS

DIMENSION STYLE  
 MM ONLY

DRAWN BY YLQIAO DATE 2005/01/17  
 CHECKED BY PTL IM DATE 2005/01/25  
 APPROVED BY SLOW DATE 2005/01/25

MATERIAL NO. SEE TABLE

SCALE NTS  
 DESIGN UNITS METRIC  
 THIRD ANGLE PROJECTION

TITLE  
 CUSTOM HEADER  
 C-GRID DUAL ROW HEADER  
 RIGHT ANGLE THROUGH HOLE

MOLEX INCORPORATED

DOCUMENT NO. SD-87911-027  
 SHEET NO. 2 OF 4

THIS DRAWING CONTAINS INFORMATION THAT IS PROPRIETARY TO MOLEX INCORPORATED AND SHOULD NOT BE USED WITHOUT WRITTEN PERMISSION

| PART NO.   | CKT SIZE | VOID POSITION | PLATING TYPE | DIMENSION |       |      |      |      |
|------------|----------|---------------|--------------|-----------|-------|------|------|------|
|            |          |               |              | A         | B     | M    | P    | E    |
| 87911-3211 | 32       | -----         | 1            | 40.64     | 38.10 | 6.10 | 3.18 | 2.27 |
| 87911-3212 | 32       | -----         | 2            | 40.64     | 38.10 | 6.10 | 3.18 | 2.27 |
| 87911-3213 | 32       | -----         | 3            | 40.64     | 38.10 | 6.10 | 3.18 | 2.27 |
| 87911-3411 | 34       | -----         | 1            | 43.18     | 40.64 | 6.10 | 3.18 | 2.27 |
| 87911-3412 | 34       | -----         | 2            | 43.18     | 40.64 | 6.10 | 3.18 | 2.27 |
| 87911-3413 | 34       | -----         | 3            | 43.18     | 40.64 | 6.10 | 3.18 | 2.27 |
| 87911-3611 | 36       | -----         | 1            | 45.72     | 43.18 | 6.10 | 3.18 | 2.27 |
| 87911-3612 | 36       | -----         | 2            | 45.72     | 43.18 | 6.10 | 3.18 | 2.27 |
| 87911-3613 | 36       | -----         | 3            | 45.72     | 43.18 | 6.10 | 3.18 | 2.27 |
| 87911-3811 | 38       | -----         | 1            | 48.26     | 45.72 | 6.10 | 3.18 | 2.27 |
| 87911-3812 | 38       | -----         | 2            | 48.26     | 45.72 | 6.10 | 3.18 | 2.27 |
| 87911-3813 | 38       | -----         | 3            | 48.26     | 45.72 | 6.10 | 3.18 | 2.27 |
| 87911-4011 | 40       | -----         | 1            | 50.80     | 48.26 | 6.10 | 3.18 | 2.27 |
| 87911-4012 | 40       | -----         | 2            | 50.80     | 48.26 | 6.10 | 3.18 | 2.27 |
| 87911-4013 | 40       | -----         | 3            | 50.80     | 48.26 | 6.10 | 3.18 | 2.27 |
| 87911-4211 | 42       | -----         | 1            | 53.34     | 50.80 | 6.10 | 3.18 | 2.27 |
| 87911-4212 | 42       | -----         | 2            | 53.34     | 50.80 | 6.10 | 3.18 | 2.27 |
| 87911-4213 | 42       | -----         | 3            | 53.34     | 50.80 | 6.10 | 3.18 | 2.27 |
| 87911-4411 | 44       | -----         | 1            | 55.88     | 53.34 | 6.10 | 3.18 | 2.27 |
| 87911-4412 | 44       | -----         | 2            | 55.88     | 53.34 | 6.10 | 3.18 | 2.27 |
| 87911-4413 | 44       | -----         | 3            | 55.88     | 53.34 | 6.10 | 3.18 | 2.27 |

| PART NO.   | CKT SIZE | VOID POSITION | PLATING TYPE | DIMENSION |       |      |      |      |
|------------|----------|---------------|--------------|-----------|-------|------|------|------|
|            |          |               |              | A         | B     | M    | P    | E    |
| 87911-4611 | 46       | -----         | 1            | 58.42     | 55.88 | 6.10 | 3.18 | 2.27 |
| 87911-4612 | 46       | -----         | 2            | 58.42     | 55.88 | 6.10 | 3.18 | 2.27 |
| 87911-4613 | 46       | -----         | 3            | 58.42     | 55.88 | 6.10 | 3.18 | 2.27 |
| 87911-4811 | 48       | -----         | 1            | 60.96     | 58.42 | 6.10 | 3.18 | 2.27 |
| 87911-4812 | 48       | -----         | 2            | 60.96     | 58.42 | 6.10 | 3.18 | 2.27 |
| 87911-4813 | 48       | -----         | 3            | 60.96     | 58.42 | 6.10 | 3.18 | 2.27 |
| 87911-5011 | 50       | -----         | 1            | 63.50     | 60.96 | 6.10 | 3.18 | 2.27 |
| 87911-5012 | 50       | -----         | 2            | 63.50     | 60.96 | 6.10 | 3.18 | 2.27 |
| 87911-5013 | 50       | -----         | 3            | 63.50     | 60.96 | 6.10 | 3.18 | 2.27 |
| 87911-5211 | 52       | -----         | 1            | 66.04     | 63.50 | 6.10 | 3.18 | 2.27 |
| 87911-5212 | 52       | -----         | 2            | 66.04     | 63.50 | 6.10 | 3.18 | 2.27 |
| 87911-5213 | 52       | -----         | 3            | 66.04     | 63.50 | 6.10 | 3.18 | 2.27 |
| 87911-5411 | 54       | -----         | 1            | 68.58     | 66.04 | 6.10 | 3.18 | 2.27 |
| 87911-5412 | 54       | -----         | 2            | 68.58     | 66.04 | 6.10 | 3.18 | 2.27 |
| 87911-5413 | 54       | -----         | 3            | 68.58     | 66.04 | 6.10 | 3.18 | 2.27 |
| 87911-5611 | 56       | -----         | 1            | 71.12     | 68.58 | 6.10 | 3.18 | 2.27 |
| 87911-5612 | 56       | -----         | 2            | 71.12     | 68.58 | 6.10 | 3.18 | 2.27 |
| 87911-5613 | 56       | -----         | 3            | 71.12     | 68.58 | 6.10 | 3.18 | 2.27 |
| 87911-5811 | 58       | -----         | 1            | 73.66     | 71.12 | 6.10 | 3.18 | 2.27 |
| 87911-5812 | 58       | -----         | 2            | 73.66     | 71.12 | 6.10 | 3.18 | 2.27 |
| 87911-5813 | 58       | -----         | 3            | 73.66     | 71.12 | 6.10 | 3.18 | 2.27 |

|         |                          |                               |
|---------|--------------------------|-------------------------------|
| REVISED | EC NO: S2007-0544        | QUALITY SYMBOLS<br>▽=0<br>◻=0 |
|         | DRWNS:KLI M01 2006/12/19 |                               |
|         | CHKD:CWLM 2006/12/19     |                               |
|         | APPR:KWLEE 2006/12/27    |                               |
| REV     | DESCRIPTION              |                               |

|  |             |
|--|-------------|
| GENERAL TOLERANCES (UNLESS SPECIFIED)                |             |
| 4 PLACES   | ± --- ± --- |
| 3 PLACES   | ± --- ± --- |
| 2 PLACES   | ± 0.2 ± --- |
| 1 PLACE  | ± --- ± --- |
| ANGULAR ± 3 °  |             |
| DRAFT WHERE APPLICABLE MUST REMAIN WITHIN DIMENSIONS |             |

|                            |            |
|----------------------------|------------|
| DIMENSION STYLE<br>MM ONLY |            |
| DRAWN BY                   | DATE       |
| YHQIAO                     | 2005/01/17 |
| CHECKED BY                 | DATE       |
| PTL IM                     | 2005/01/25 |
| APPROVED BY                | DATE       |
| SCLOW                      | 2005/01/25 |
| MATERIAL NO.               |            |
| SEE TABLE                  |            |

|   |                        |                        |
|---|------------------------|------------------------|
| SCALE<br>NTS  | DESIGN UNITS<br>METRIC | THIRD ANGLE PROJECTION |
| TITLE<br>CUSTOM HEADER<br>C-GRID DUAL ROW HEADER<br>RIGHT ANGLE THROUGH HOLE  |                        |                        |
| MOLEX INCORPORATED  |                        |                        |
| DOCUMENT NO.<br>SD-87911-027  | SHEET NO.<br>3 OF 4    |                        |
| THIS DRAWING CONTAINS INFORMATION THAT IS PROPRIETARY TO MOLEX INCORPORATED AND SHOULD NOT BE USED WITHOUT WRITTEN PERMISSION |                        |                        |

| PART NO.   | CKT SIZE | VOID POSITION | PLATING TYPE | DIMENSION |       |      |      |      |
|------------|----------|---------------|--------------|-----------|-------|------|------|------|
|            |          |               |              | A         | B     | M    | P    | E    |
| 87911-6011 | 60       | -----         | 1            | 76.20     | 73.66 | 6.10 | 3.18 | 2.27 |
| 87911-6012 | 60       | -----         | 2            | 76.20     | 73.66 | 6.10 | 3.18 | 2.27 |
| 87911-6013 | 60       | -----         | 3            | 76.20     | 73.66 | 6.10 | 3.18 | 2.27 |
| 87911-6211 | 62       | -----         | 1            | 78.74     | 76.20 | 6.10 | 3.18 | 2.27 |
| 87911-6212 | 62       | -----         | 2            | 78.74     | 76.20 | 6.10 | 3.18 | 2.27 |
| 87911-6213 | 62       | -----         | 3            | 78.74     | 76.20 | 6.10 | 3.18 | 2.27 |
| 87911-6411 | 64       | -----         | 1            | 81.28     | 78.74 | 6.10 | 3.18 | 2.27 |
| 87911-6412 | 64       | -----         | 2            | 81.28     | 78.74 | 6.10 | 3.18 | 2.27 |
| 87911-6413 | 64       | -----         | 3            | 81.28     | 78.74 | 6.10 | 3.18 | 2.27 |
| 87911-6611 | 66       | -----         | 1            | 83.82     | 81.28 | 6.10 | 3.18 | 2.27 |
| 87911-6612 | 66       | -----         | 2            | 83.82     | 81.28 | 6.10 | 3.18 | 2.27 |
| 87911-6613 | 66       | -----         | 3            | 83.82     | 81.28 | 6.10 | 3.18 | 2.27 |
| 87911-6811 | 68       | -----         | 1            | 86.36     | 83.82 | 6.10 | 3.18 | 2.27 |
| 87911-6812 | 68       | -----         | 2            | 86.36     | 83.82 | 6.10 | 3.18 | 2.27 |
| 87911-6813 | 68       | -----         | 3            | 86.36     | 83.82 | 6.10 | 3.18 | 2.27 |
| 87911-7011 | 70       | -----         | 1            | 88.90     | 86.36 | 6.10 | 3.18 | 2.27 |
| 87911-7012 | 70       | -----         | 2            | 88.90     | 86.36 | 6.10 | 3.18 | 2.27 |
| 87911-7013 | 70       | -----         | 3            | 88.90     | 86.36 | 6.10 | 3.18 | 2.27 |
| 87911-7211 | 72       | -----         | 1            | 91.44     | 88.90 | 6.10 | 3.18 | 2.27 |
| 87911-7212 | 72       | -----         | 2            | 91.44     | 88.90 | 6.10 | 3.18 | 2.27 |
| 87911-7213 | 72       | -----         | 3            | 91.44     | 88.90 | 6.10 | 3.18 | 2.27 |

| PART NO.   | CKT SIZE | VOID POSITION | PLATING TYPE | DIMENSION |       |      |      |      |
|------------|----------|---------------|--------------|-----------|-------|------|------|------|
|            |          |               |              | A         | B     | M    | P    | E    |
| 87911-7411 | 74       | -----         | 1            | 93.98     | 91.44 | 6.10 | 3.18 | 2.27 |
| 87911-7412 | 74       | -----         | 2            | 93.98     | 91.44 | 6.10 | 3.18 | 2.27 |
| 87911-7413 | 74       | -----         | 3            | 93.98     | 91.44 | 6.10 | 3.18 | 2.27 |
| 87911-7611 | 76       | -----         | 1            | 96.52     | 93.98 | 6.10 | 3.18 | 2.27 |
| 87911-7612 | 76       | -----         | 2            | 96.52     | 93.98 | 6.10 | 3.18 | 2.27 |
| 87911-7613 | 76       | -----         | 3            | 96.52     | 93.98 | 6.10 | 3.18 | 2.27 |
| 87911-7811 | 78       | -----         | 1            | 99.06     | 96.52 | 6.10 | 3.18 | 2.27 |
| 87911-7812 | 78       | -----         | 2            | 99.06     | 96.52 | 6.10 | 3.18 | 2.27 |
| 87911-7813 | 78       | -----         | 3            | 99.06     | 96.52 | 6.10 | 3.18 | 2.27 |
| 87911-8011 | 80       | -----         | 1            | 101.60    | 99.06 | 6.10 | 3.18 | 2.27 |
| 87911-8012 | 80       | -----         | 2            | 101.60    | 99.06 | 6.10 | 3.18 | 2.27 |
| 87911-8013 | 80       | -----         | 3            | 101.60    | 99.06 | 6.10 | 3.18 | 2.27 |

|   |                               |   |  |                            |  |                              |                        |   |  |  |
|---|-------------------------------|---|--|----------------------------|--|------------------------------|------------------------|---|--|--|
| REVISED<br>EC NO: S2007-0544<br>DRWNS:KLI M01 2006/12/19<br>CHKD:CWAM 2006/12/19<br>APPR:KWLEE 2006/12/27 | QUALITY SYMBOLS<br>▽=0<br>▽=0 | GENERAL TOLERANCES (UNLESS SPECIFIED)                   |  | DIMENSION STYLE<br>MM ONLY |  | SCALE<br>NTS                 | DESIGN UNITS<br>METRIC | THIRD ANGLE PROJECTION  |  |  |
|   |                               |   |  | DRAWN BY<br>YLQIAO         |  | DATE<br>2005/01/17           |                        | CUSTOM HEADER<br>C-GRID DUAL ROW HEADER<br>RIGHT ANGLE THROUGH HOLE |  |  |
|   |                               |   |  | CHECKED BY<br>PTL IM       |  | DATE<br>2005/01/25           |                        |   |  |  |
|   |                               |   |  | APPROVED BY<br>SCLOW       |  | DATE<br>2005/01/25           |                        | MOLEX INCORPORATED  |  |  |
|   |                               | DRAFT WHERE APPLICABLE<br>MUST REMAIN WITHIN DIMENSIONS |  | SEE TABLE                  |  | DOCUMENT NO.<br>SD-87911-027 |                        | SHEET NO.<br>4 OF 4   |  |  |