

PLEASE CHECK WWW.MOLEX.COM FOR LATEST PART INFORMATION

Part Number: [0355470300](#)
Status: **Active**
Description: 6.35mm (.250") Tab Multiple Wire-to-Wire Male Housing, 3 Circuits

Documents:

[Drawing \(PDF\)](#) [RoHS Certificate of Compliance \(PDF\)](#)

General

Product Family Crimp Housings
Series [35547](#)
Product Name N/A

Physical

Circuits (maximum) 3
Gender Male
Glow-Wire Compliant No
Number of Rows 1
Packaging Type Bag
Panel Mount Yes
Pitch - Mating Interface (in) 0.270 In, 0.297 In
Pitch - Mating Interface (mm) 6.85 mm, 7.55 mm
Temperature Range - Operating -40°C to +120°C

Material Info

Reference - Drawing Numbers

Sales Drawing SD-35547-001

EU RoHS

**ELV and RoHS
Compliant**

REACH SVHC

Not Reviewed

Halogen-Free

Status

Not Reviewed

China RoHS



**Need more information on product
environmental compliance?**

Email productcompliance@molex.com
For a multiple part number RoHS Certificate of
Compliance, [click here](#)

Please visit the [Contact Us](#) section for any
non-product compliance questions.

Search Parts in this Series

[35547Series](#)

Mates With

[35546](#)

Use With

[35725](#) , [35766](#)

DO NOT SCALE DRAWING
DIMENSION IN METRIC

B

C

PROJECT NO.

SIMILAR ITEM

DWG. NO.
SD-35547-001

8

7

6

5

4

3

2

1

F

E

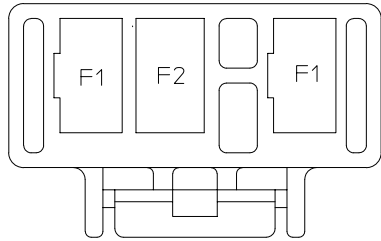
D

C

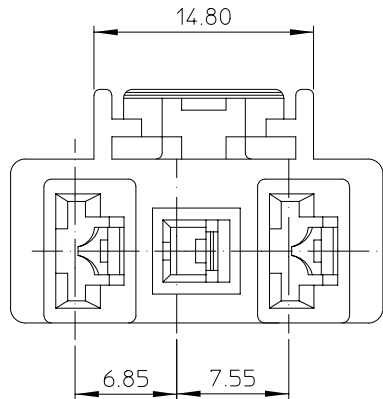
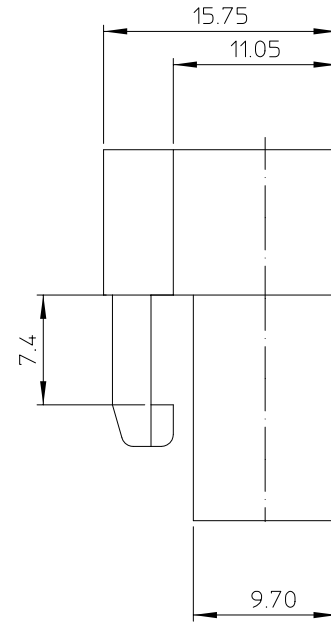
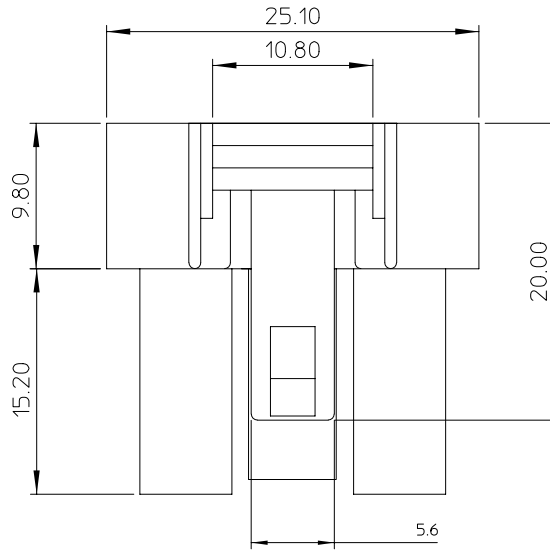
B

A

TERMINAL PATTERN



F1 TERMINAL : 35725-5*10
F2 TERMINAL : 35766-0*10



NOTES

1. MATERIAL : POLYESTER, UL94V-0, UNFILLED
2. COLOR : WHITE(NATURAL) COLOR
3. MATED HOUSING : 35546-0700
4. APPLICABLE TERMINAL : 35725-5*10
35766-0*10

REVISED ECN NO. KOR2002-0099 DRWN: CB.CHIN 02/04/09 CHK: W.Y.YANG APPR: C.W.LEE	QUALITY SYMBOLS MAJOR $\nabla = 0$ CRITICAL $\nabla C = 0$	GENERAL TOLERANCES: (UNLESS SPECIFIED)		SCALE 3:1	DESIGN UNITS <input checked="" type="checkbox"/> mm <input type="checkbox"/> INCH	THIRD ANGLE PROJECTION	DIMENSIONS: <input type="checkbox"/> mm <input type="checkbox"/> INCH <input checked="" type="checkbox"/> mm ONLY		SHT	REV											
		4 PLACES	$\pm 0.$	$\pm .$	DRAWN BY & DATE W.Y.YANG 97/11/12		MATERIAL NO. 355470300	DRAWING NO. SD-35547-001	SHEET NO. 1 OF 1	REVISE ON CAD ONLY											
		3 PLACES	$\pm 0.$	$\pm .$	CHECKED BY & DATE B.K.CHOI 97/11/12						TITLE: .250 MULTI W/W CONNECTOR PLUG HOUSING-3P										
		2 PLACES	± 0.30	$\pm .$	APPROVED BY & DATE C.W.LEE 97/11/12		MOLEX INCORPORATED														
A	REV	ANGULAR: $\pm 3.0^\circ$		CAD FILENAME S35547AA.MI						SIZE B											
DRAFT WHERE APPLICABLE MUST REMAIN WITHIN DIMENSIONS											THIS DRAWING CONTAINS INFORMATION THAT IS PROPRIETARY TO MOLEX INCORPORATED AND SHOULD NOT BE USED WITHOUT WRITTEN PERMISSION.										

8

7

6

5

4

3

2

KOREA

MX-A3