

**PLEASE CHECK WWW.MOLEX.COM FOR LATEST PART INFORMATION**

**Part Number:** **0191640305**  
**Status:** **Active**  
**Description:** Perma-Seal™ Female Quick Disconnect Receptacle for 10-12 AWG Wire, Tab Size 6.35mm (.250") x .081mm (.032"), Mylar Tape Carrier

**Documents:**

[Drawing \(PDF\)](#) [RoHS Certificate of Compliance \(PDF\)](#)

**Agency Certification**

CSA LR18689  
 UL E79133

**General**

Product Family Quick Disconnects  
 Series 19164  
 Crimp Quality Equipment Yes  
 Product Name Perma-Seal™  
 Type Quick Disconnect

**Physical**

Barrel Type Closed  
 Flammability 94V-0  
 Gender Female  
 Glow-Wire Compliant No  
 Insulation NiAc™  
 Lock to Mating Part None  
 Material - Metal Brass  
 Orientation Straight  
 Packaging Type Adhesive Tape on Reel  
 Tab Thickness 0.81mm (.032")  
 Tab Width 6.35mm (.250")  
 Temperature Range - Operating -55°C to +125°C  
 Wire Insulation Diameter 5.84mm (.230") max.  
 Wire Size AWG 10, 12  
 Wire Size mm² 4.00 - 6.00

**Electrical**

Voltage - Maximum 600V

**Material Info**

Old Part Number SC-9281T

**Reference - Drawing Numbers**

Sales Drawing SD-19164-020



Series

image - Reference only

**EU RoHS**

**ELV and RoHS Compliant**

**REACH SVHC**

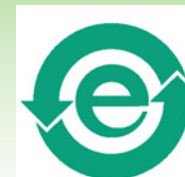
Not Reviewed

**Halogen-Free**

**Status**

**Not Reviewed**

**China RoHS**



**Need more information on product environmental compliance?**

Email [productcompliance@molex.com](mailto:productcompliance@molex.com)  
 For a multiple part number RoHS Certificate of Compliance, [click here](#)

Please visit the [Contact Us](#) section for any non-product compliance questions.

**Search Parts in this Series**

19164Series

**Application Tooling | FAQ**

*Tooling specifications and manuals are found by selecting the products below. Crimp Height Specifications are then contained in the Application Tooling Specification document.*

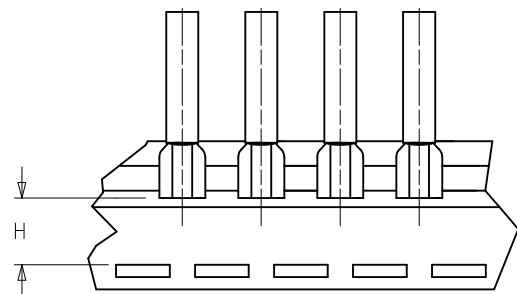
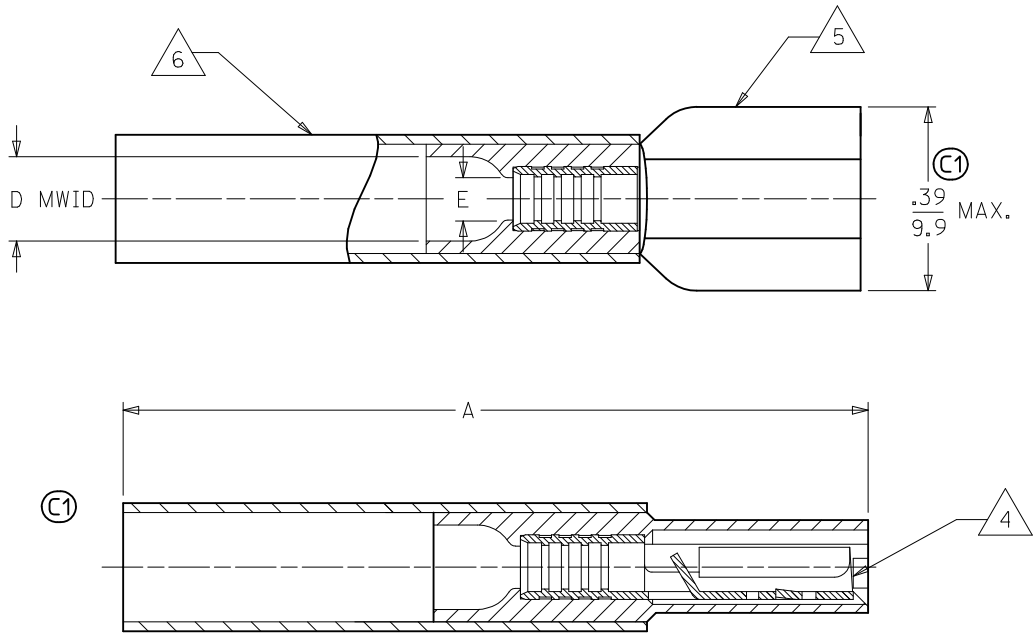
**Global**

**Description**

**Product #**

ATP Tooling Kits used with Molex Air Tape Press	<u>0192880292</u>
---	-------------------

MATERIAL NUMBER	ENGINEERING NUMBER	TAPE MATERIAL NUMBER	TAPE ENGINEERING NUMBER	WIRE SIZE AWG	WIRE SIZE MM SQ.	FITS MALE TAB	PERMA-SEAL COLOR	Ⓢ A MAX.	Ⓢ D MWID	E Ⓢ MIN	H NOMINAL
191640017	SAA-9261	191640018	SAA-9261T	22-18	.25-1.5	.250 X .032	RED	1.50/38.1	.17/4.3	.081/2.05	.55/14.0
191640050	SBB-9263	191640051	SBB-9263T	16-14	1.0-2.5	.250 X .032	BLUE	1.50/38.1	.18/4.5	.081/2.05	.55/14.0
191640076	SC-9281	191640305	SC-9281T	12-10	4.0-6.0	.250 X .032	YELLOW	1.52/38.6	.23/5.8	.140/3.56	.56/14.2



TAPE MOUNTING DETAIL

- NOTES:
- Ⓢ 1. FEMALE RECEPTACLE CONFORMS TO UL310.
  - 2. ALL DIMENSIONS SHOWN ARE BEFORE SHRINK TUBING IS HEATED.
  - 3. "MWID" DENOTES MAX. WIRE INSULATION DIA.
  - 4. TAB MATERIAL: .018 THK, BRASS, PLATING, TIN.
  - 5. INSULATION MAT'L: MOLDED NYLON
  - Ⓢ 6. NYLON TUBING WITH HOTMELT INNER LINER. SEE CHART FOR COLOR.
  - Ⓢ 7. ALL PARTS ARE ROHS COMPLIANT.

CORRECT SPECS EC NO: WNA2010-0115 DRW: WETHRODAHL 2010/02/16 CHKD: JMACNEIL 2010/02/18 APPR: JMACNEIL 2010/02/22	QUALITY SYMBOLS ▽=0 ▽=0	GENERAL TOLERANCES (UNLESS SPECIFIED)		DIMENSION STYLE		SCALE	DESIGN UNITS	THIRD ANGLE PROJECTION			
				IN/MM		---	INCH				
				mm	INCH	DRAWN BY	DATE	TITLE			
				4 PLACES ±---	±---	BRE	2002/10/29	PERMA-SEAL COUPLER FEMALE RECEPTACLE			
		3 PLACES ±---	±---	CHECKED BY	DATE	MOLEX INCORPORATED					
		2 PLACES ±---	±---	HEB	2002/10/29						
		1 PLACE ±---	±---	APPROVED BY	DATE	DOCUMENT NO.		SHEET NO.			
		ANGULAR ±---	°	RWD	2002/10/29	SD-19164-020		1 OF 1			
		DRAFT WHERE APPLICABLE MUST REMAIN WITHIN DIMENSIONS		MATERIAL NO. SEE CHART		THIS DRAWING CONTAINS INFORMATION THAT IS PROPRIETARY TO MOLEX INCORPORATED AND SHOULD NOT BE USED WITHOUT WRITTEN PERMISSION					