

**PLEASE CHECK WWW.MOLEX.COM FOR LATEST PART INFORMATION**

**Part Number:** [1120780001](#)  
**Status:** **Active**  
**Description:** BradCommunications™ SST™ 4 Serial ports PLC communications module for Allen-Bradley ControlLogix, includes Remote Link Library feature

**Documents:**

[Drawing \(PDF\)](#) [RoHS Certificate of Compliance \(PDF\)](#)

**General**

Product Family	Network Interface
Series	<a href="#">112078</a>
Approvals	N/A
Communication Speed	110 to 115,200 bps
Mounting Style	N/A
Product Name	SST™
Protocol	DeviceNet* Master/Slave
Type	Serial Card

**Physical**

Channels	4
Interface	RS232/RS422/RS485
Network Connection Type	D-Sub Female (9 pin)
Packaging Type	Carton
Processor	PowerPC 8323
Temperature Range - Operating	0°C to +60°C

**Electrical**

EMC	N/A
Supply Voltage	5W

**Material Info**

Old Part Number	SST-SR4-CLX-RLL
-----------------	-----------------

**Reference - Drawing Numbers**

Sales Drawing	E-112078-0001
---------------	---------------



**EU RoHS**

**ELV and RoHS  
Compliant**  
**REACH SVHC**  
 Not Reviewed  
**Halogen-Free  
Status**

**China RoHS**



**Not Reviewed**

**Need more information on product  
environmental compliance?**

Email [productcompliance@molex.com](mailto:productcompliance@molex.com)  
 For a multiple part number RoHS Certificate of  
 Compliance, [click here](#)

Please visit the [Contact Us](#) section for any  
 non-product compliance questions.

**Search Parts in this Series**  
[112078Series](#)



09 Apr. 08  
DW2007212

The BradCommunications™ SST communications module connects your Rockwell Automation ControlLogix® controller with up to distinct Serial Modbus Master/Slave networks.

## 4 Serial Modbus Channels

For the Allen-Bradley® ControlLogix® Controller

### Features

- **Save money!**  
4 RS232/RS485 Serial Modbus channels on a single slot - 1756 backplane compatible
- **Save time!**  
No ladder logic to write for configuration and data transfer between module and ControlLogix processor
- Boot user configuration and update firmware module through integrated USB port
- Data format: Bit, Byte, Word, Dword, Float
- RLL feature : configure and diagnose Modbus network remotely via A-B RSLinx®
- Advanced Windows configuration and diagnostics tools
- Up to 8 SST™ modules can be used in one ControlLogix rack
- Support local and remote chassis

### Protocols

- Modbus Master (RTU / ASCII)
- Modbus Slave (RTU / ASCII)

### Typical Applications

- SCADA / supervisory communication
- Integration of legacy Modbus devices
- Modbus data concentrator
- Bridge Rockwell networks to Modbus compatible devices



### Overview

The BradCommunications™ SST™ Serial module connects Rockwell Automation® ControlLogix® controllers to Modbus networks. Each module has 4 Serial communication channels that act as independent Modbus Master or Slave protocols to exchange data with other Modbus compatible devices.

The SST module acts as a 1756 input/output module between the Modbus network and the ControlLogix backplane. The data transfer from the SST™ module to the ControlLogix processor supports 2 modes; a direct mode allowing mapping of Modbus data in I/O processor image (496 inputs bytes / 496 output bytes) and a messaging mode (based on CIP transaction) allowing access to Modbus data images stored in 32K registers of the SST™ module's memory.

The SST module has a USB port on the front panel which can be used for the startup of the module when the user configuration is stored to a USB key. This can also be beneficial if a breakdown occurs, allowing a very quick startup to occur with a new SST module.

### Configuration and Diagnostics

Save your time, the SST module doesn't require any ladder logic programming to be used. The configuration is created using a PC-based Windows console software connected via RLL (Remote Link Library) functionality allowing a remote access to the SST module for the configuration and the diagnostics through Rockwell network architectures (Ethernet/ControlNet/DeviceNet™).

The SST console allows the user to define the network parameters, Modbus devices and the cyclic data exchanges. The console includes a user configuration manager offering services for download, upload, copy, and rename of user configurations. With this, a user can very easily and quickly create a new configuration to initialize and start a SST module.

The SST console includes diagnostic tools to help with the commissioning and monitoring of the Modbus connection. These tools allow access in read and write modes to the Modbus slaves or to monitor and modify the module's internal data shared bound for a Modbus Master. Thus, the user-friendly tools are available for controlling the communication in commissioning phase (PROG mode). This same information is also available in production (RUN mode) through status words making it possible for the user to manage the execution of the control application in its ladder logic.

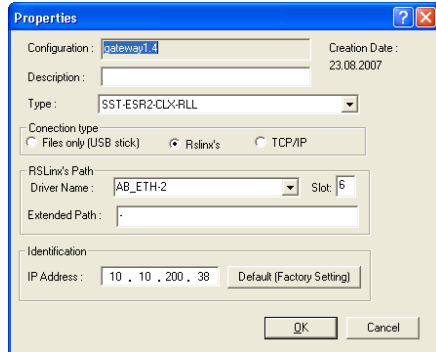
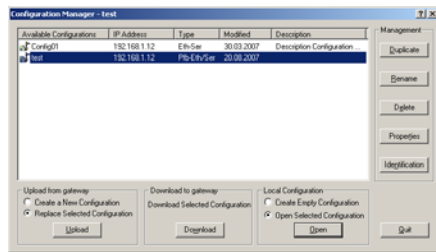


**BradCommunications™**

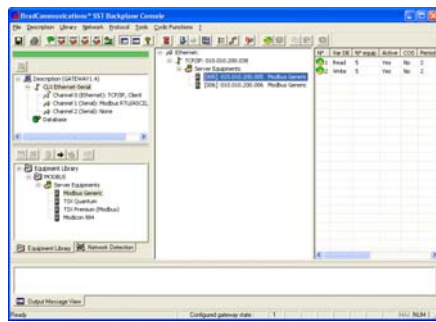
# 4 Serial Modbus Channels



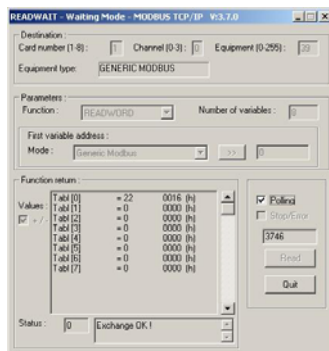
## Diagnostic & Software Tools



- User Configuration Manager -



- Configuration Console -



- Modbus Read/Write Data Diagnostic Tool -

## Hardware Specifications

<b>Bus Interface</b>	<ul style="list-style-type: none"> <li>Allen-Bradley® 1756 ControlLogix®</li> <li>Support multiple modules in a chassis</li> <li>Local and remote rack</li> </ul>
<b>Memory</b>	<ul style="list-style-type: none"> <li>128 MB of onboard shared memory</li> <li>8 MB of flash memory (user configuration data and firmware)</li> </ul>
<b>Diagnostics</b>	<ul style="list-style-type: none"> <li>4 characters display</li> <li>3 LEDs indicator:                     <ul style="list-style-type: none"> <li>1 - health of the network (COMM)</li> <li>2 - communication status (SYS)</li> <li>3 - initialization complete and module is ok (OK)</li> </ul> </li> </ul>
<b>USB Port (pending)</b>	<ul style="list-style-type: none"> <li>Type A, USB 2 and 1.1 compatible</li> <li>User configuration boot</li> <li>Module firmware upgrade</li> </ul>
<b>Current Consumption</b>	1005 mA @ 5V or 1.75 mA @ 24V
<b>Operating Temperature</b>	0°C (32°F) up to +60°C (140°F)
<b>Storage Temperature</b>	-40°C (-40°F) up to +85°C (185°F)
<b>Regulatory Approvals</b>	CE, Class 1 Div 2 (pending)
<b>I/O Mapping (for ControlLogix)</b>	<ul style="list-style-type: none"> <li>Maximum 496 bytes input data</li> <li>Maximum 496 bytes output data</li> <li>Maximum 250 words status data</li> <li>Maximum 41 bytes configuration data</li> </ul>
<b>Shared Memory (for ControlLogix)</b>	<ul style="list-style-type: none"> <li>32K words and 32K bits</li> <li>Read/Write access</li> <li>Ladder logic based on CIP messaging</li> </ul>
<b>Configuration/Diagnostics</b>	Windows-based software tools through A-B RSLinx™

## Network Specifications

Serial Communication Port	
<b>Port:</b> 4 distinct Serial ports <b>Speed:</b> 110 to 115200 bps <b>Parity:</b> none, even, and odd <b>Data bits:</b> 5, 6, 7, or 8 <b>Stop bits:</b> 1 or 2 <b>Connector:</b> RJ45 (DB9 male supplied cable) <b>Electrical interface:</b> RS232, RS422, and RS485, 500V galvanic insulation	<b>Protocol:</b> <b>Master</b> RTU or ASCII Mode Maximum slave: 127 slaves devices Function code: 0, 1, 2, 3, 4, 5, 6, 15, 16 Data format: Intel® / Motorola® <b>Slave</b> RTU or ASCII Mode 32K words / 32K bits shared memory Function Code: 0, 1, 3, 5, 6, 15, 16

## Ordering Information

Part Number	Description
<b>SST-SR4-CLX-RLL</b>	BradCommunications™ SST™ 4 Serial ports PLC communications module for Allen-Bradley ControlLogix, includes Remote Link Library feature
<b>Also available: SST-ESR2-CLX-RLL</b>	BradCommunications™ SST™ 1 Ethernet and 2 Serial ports PLC communications module for Allen-Bradley ControlLogix, includes Remote Link Library feature

More Serial and Ethernet protocols available for Altus (AL2000 series), Alstom (Alspa C80-35 & C80-75), GE Fanuc (GE90-30 & 90-70), Mitsubishi (AnA, AnU, AnS, OnA, OnAS), Omron (Sysmac C, CV and CS1), Schneider (Premium, Micro, TSX/PMX), Siemens (S7-200/300/400, S5, TI-505). Please contact us for more information.

To contact us: [www.woodhead.com](http://www.woodhead.com)

Reference Number: DW2007212 Date Published: January 2008

North America: US: +1 800 225 7724 – Canada: +1 519 725 5136

Europe: France: +33 2 32 96 04 20 – Germany: +49 7252 94 96 0 – Italy: +39 010 59 30 77 – United: Kingdom +44 1495 356300

Asia: Shanghai, China: +86 21-5835-9885 – Tianjin, China: +86 22-23321717

Singapore: +65 6268-6868 – Yamato, Japan: +81 46-265-2428 – Nagoya, Japan: +81 52-221-5950