

**PLEASE CHECK WWW.MOLEX.COM FOR LATEST PART INFORMATION**

**Part Number:** [0022433050](#)  
**Status:** **Active**  
**Description:** 2.5 SPOX IDT RECEPTACLE WHITE 5CKT

**Documents:**

[3D Model](#) [Product Specification PS-42219-0001 \(PDF\)](#)  
[Drawing \(PDF\)](#) [RoHS Certificate of Compliance \(PDF\)](#)

**Agency Certification**

CSA LR19980  
 UL E29179

**General**

Product Family IDT and Solder Connectors  
 Series [42219](#)  
 Comments Spring Box|Use with 24 AWG solid  
 Crimp Quality Equipment Yes  
 Product Name SPOX™

**Physical**

Circuits (Loaded) 5  
 Color - Resin Natural  
 Durability (mating cycles max) 25  
 Flammability 94V-0  
 Gender Female  
 Glow-Wire Compliant No  
 Lock to Mating Part None  
 Material - Metal Phosphor Bronze  
 Material - Plating Mating Tin  
 Material - Plating Termination Tin  
 Material - Resin Polyester  
 Number of Rows 1  
 Packaging Type Bag  
 Panel Mount No  
 Pitch - Mating Interface (in) 0.098 In  
 Pitch - Mating Interface (mm) 2.50 mm  
 Plating min: Mating (µin) 100  
 Plating min: Mating (µm) 2.50  
 Plating min: Termination (µin) 100  
 Plating min: Termination (µm) 2.50  
 Stackable No  
 Temperature Range - Operating 0°C to +75°C  
 Termination Interface: Style IDT or Pierce  
 Wire Size AWG 24, 26

**Electrical**

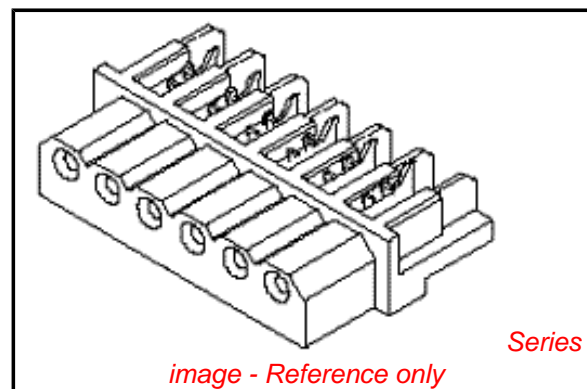
Current - Maximum per Contact 3A  
 Voltage - Maximum 250V

**Material Info**

Old Part Number A-42219-5A

**Reference - Drawing Numbers**

Product Specification PS-42219-0001  
 Sales Drawing SDA-42219-\*



**EU RoHS**

**ELV and RoHS Compliant**  
**REACH SVHC**  
**Contains SVHC: No**  
**Halogen-Free Status**

**China RoHS**



**Not Halogen-Free**

**Need more information on product environmental compliance?**

Email [productcompliance@molex.com](mailto:productcompliance@molex.com)  
 For a multiple part number RoHS Certificate of Compliance, [click here](#)

Please visit the [Contact Us](#) section for any non-product compliance questions.

**Search Parts in this Series**

[42219Series](#)

**Mates With**

Headers, [5267](#) , [42249](#) , [42267](#) , [5268](#)

**Application Tooling | FAQ**

*Tooling specifications and manuals are found by selecting the products below. Crimp Height Specifications are then contained in the Application Tooling Specification document.*

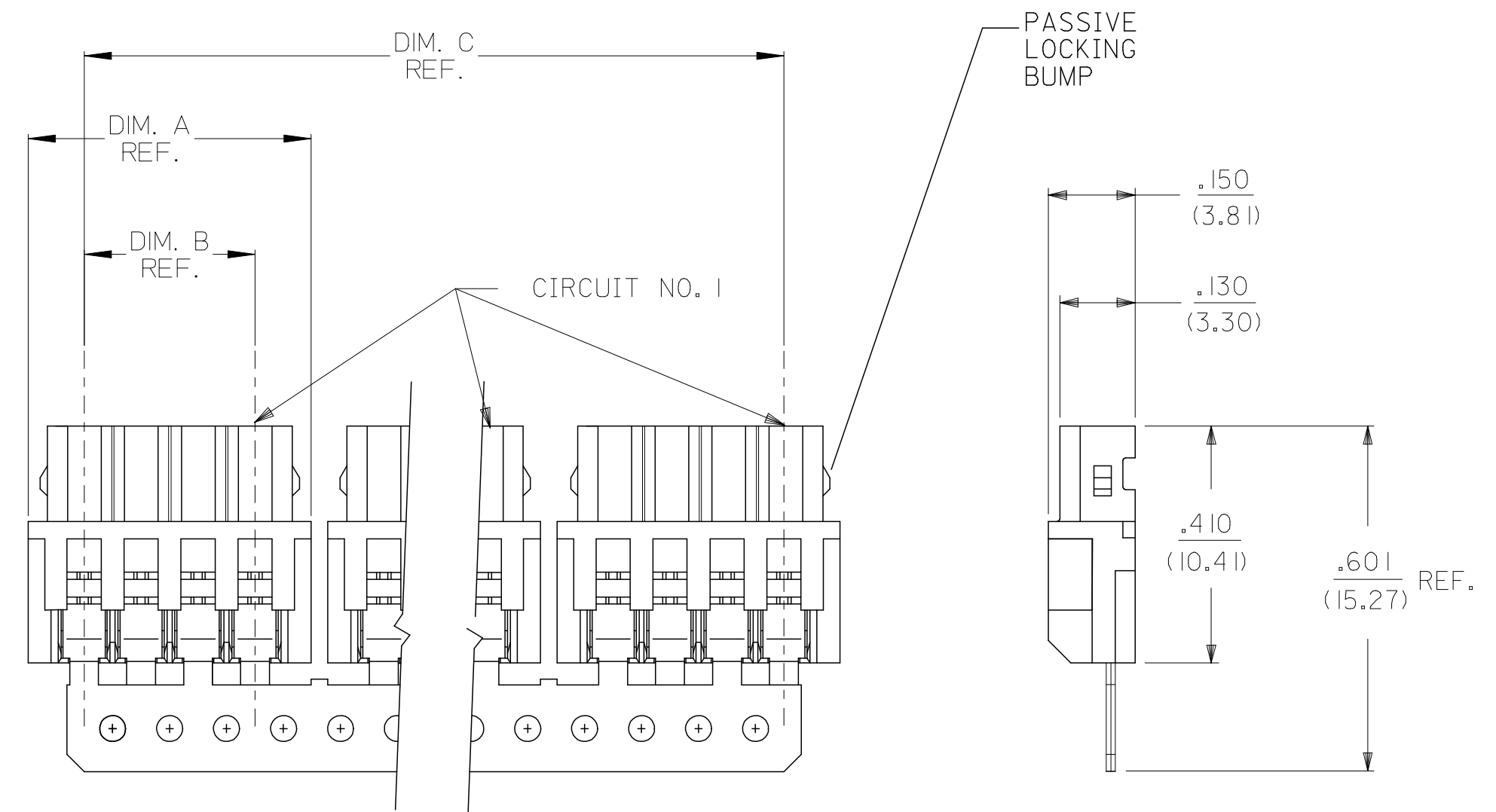
**Global**

| Description                                  | Product #                  |
|--|----------------------------|
| IDT - Manual Press                           | <a href="#">0011219757</a> |
| Hawk™ Discrete Wire Terminator Machine 2.5mm | <a href="#">0623000500</a> |
| Hawk™ Discrete Wire Terminator Machine 2.5mm | <a href="#">0623000700</a> |
| Changehead for Parallel Action Handtool      | <a href="#">0690080290</a> |

This document was generated on 06/08/2010

**PLEASE CHECK [WWW.MOLEX.COM](http://WWW.MOLEX.COM) FOR LATEST PART INFORMATION**

|   | 13                            | 12                         | 11               | 10               | 9                | 8                           | 7 | 6 | 5 | 4 | 3 | 2 | 1 |
|---|-------------------------------|----------------------------|------------------|------------------|------------------|-----------------------------|---|---|---|---|---|---|---|
| J | DISCRETE<br>CONN.<br>CKT SIZE | NO OF<br>CONN.<br>IN CHAIN | DIM. A           | DIM. B           | DIM. C           | PASSIVE<br>LOCKING<br>BUMPS |   |   |   |   |   |   |   |
|   | 2                             | 10                         | .292<br>(7.42)   | .098<br>(2.50)   | 2.756<br>(70.00) | YES                         |   |   |   |   |   |   |   |
|   | 3                             | 8                          | .390<br>(9.92)   | .197<br>(5.00)   | 2.953<br>(75.00) | YES                         |   |   |   |   |   |   |   |
| I | 4                             | 6                          | .489<br>(12.42)  | .295<br>(7.50)   | 2.756<br>(70.00) | YES                         |   |   |   |   |   |   |   |
|   | 5                             | 5                          | .587<br>(14.92)  | .394<br>(10.00)  | 2.756<br>(70.00) | YES                         |   |   |   |   |   |   |   |
|   | 6                             | 4                          | .685<br>(17.40)  | .492<br>(12.50)  | 2.556<br>(65.00) | YES                         |   |   |   |   |   |   |   |
| H | 7                             | 4                          | .783<br>(19.90)  | .591<br>(15.00)  | 2.952<br>(75.00) | YES                         |   |   |   |   |   |   |   |
|   | 8                             | 3                          | .882<br>(22.40)  | .689<br>(17.50)  | 2.461<br>(62.50) | YES                         |   |   |   |   |   |   |   |
|   | 9                             | 3                          | .980<br>(24.90)  | .787<br>(20.00)  | 2.756<br>(70.00) | NO                          |   |   |   |   |   |   |   |
| G | 10                            | 2                          | 1.079<br>(27.40) | .886<br>(22.50)  | 1.969<br>(50.00) | NO                          |   |   |   |   |   |   |   |
|   | 11                            | 2                          | 1.177<br>(29.90) | .984<br>(25.00)  | 2.165<br>(55.00) | NO                          |   |   |   |   |   |   |   |
|   | 12                            | 2                          | 1.276<br>(32.40) | 1.082<br>(27.50) | 2.362<br>(60.00) | NO                          |   |   |   |   |   |   |   |
| F | 13                            | 2                          | 1.374<br>(34.90) | 1.181<br>(30.00) | 2.559<br>(65.00) | NO                          |   |   |   |   |   |   |   |
|   | 14                            | 2                          | 1.472<br>(37.40) | 1.279<br>(32.50) | 2.756<br>(70.00) | NO                          |   |   |   |   |   |   |   |
|   | 15                            | 2                          | 1.571<br>(39.90) | 1.378<br>(35.00) | 2.952<br>(75.00) | NO                          |   |   |   |   |   |   |   |



NOTES:

- MATERIAL:  
HOUSING: POLYESTER, 7.5% GLASS FILLED, 94V-0  
TERMINAL: PHOS. BRONZE
- FINISH:  
(P909) \*OVERALL HOT TIN DIP: .000100/0.00254 MIN.  
\*THE PRIMARY SHIPPING CARTON WILL BE LABELED "COMPLIANT TO RoHS DIRECTIVE 2002/95/EC AND ELV ANNEX II OF DIRECTIVE 2000/53/EC". CARTONS WITHOUT THIS LABEL MAY CONTAIN PRODUCT WITH TIN/LEAD PLATINGS.
- FOR PRODUCT SPEC'S SEE PS-42219-0001
- PACKAGING SPECIFICATION: SEE LENGEND
- THE WIRE TERMINATION SPEC IS SMES-42219-0002.
- THIS PART CONFORMS TO CLASS B REQUIREMENTS OF COSMETIC SPECIFICATION PS-45499-002.

42219-N\*\*\*-\*

NO OF CKTS ———

HOUSING COLOR ———

PACKAGING SPEC.  
BLANK= PK-70873-0140 (LARGE BOX)  
I= PK-40873-0061 (SMALL BOX)

TERMINAL  
BLANK=42218

A= (NATURAL)  
B= (BLUE)  
C= (BROWN)  
D= (RED)  
E= (ORANGE)  
F= (YELLOW)  
G= (GREEN)  
H= (GRAY)

|      |      |
|------|------|
| 3    | J1   |
| 2    | J1   |
| 1    | J1   |
| SHT. | REV. |

|  |                                    |  |        |    |      |          |       |       |          |       |        |          |        |        |         |        |       |  |  |  |
|--|------------------------------------|--|--------|----|------|----------|-------|-------|----------|-------|--------|----------|--------|--------|---------|--------|-------|--|--|--|
| <b>UPDATE NOTES</b><br>EC NO: UCP2007-1815<br>DRWN: PRIDDER 2007/01/26<br>CHK'D: ADERR 2007/01/30<br>APPR: FSMITH 2007/02/01 | QUALITY SYMBOLS<br>▽=0<br>▽=0      | GENERAL TOLERANCES (UNLESS SPECIFIED)<br><table border="1"> <tr> <td></td> <td>mm</td> <td>INCH</td> </tr> <tr> <td>4 PLACES</td> <td>± ---</td> <td>± ---</td> </tr> <tr> <td>3 PLACES</td> <td>± ---</td> <td>± .010</td> </tr> <tr> <td>2 PLACES</td> <td>± 0.25</td> <td>± .014</td> </tr> <tr> <td>1 PLACE</td> <td>± 0.36</td> <td>± ---</td> </tr> </table> |        | mm | INCH | 4 PLACES | ± --- | ± --- | 3 PLACES | ± --- | ± .010 | 2 PLACES | ± 0.25 | ± .014 | 1 PLACE | ± 0.36 | ± --- | DIMENSION STYLE<br>IN/MM<br>DRAWN BY: AG<br>DATE: 1989/02/06<br>CHECKED BY: RE<br>DATE: 1989/02/06<br>APPROVED BY: WRL<br>DATE: 1989/02/06 | SCALE: 4:1<br>DESIGN UNITS: METRIC<br>THIRD ANGLE PROJECTION | TITLE: 2.5MM I.D.T. CONNECTOR ASSEMBLY<br>MOLEX INCORPORATED<br>DOCUMENT NO.: SDA-42219-*<br>SHEET NO.: 1 OF 3 |
|  |                                    | mm   | INCH   |    |      |          |       |       |          |       |        |          |        |        |         |        |       |  |  |  |
|  | 4 PLACES                           | ± ---  | ± ---  |    |      |          |       |       |          |       |        |          |        |        |         |        |       |  |  |  |
|  | 3 PLACES                           | ± ---  | ± .010 |    |      |          |       |       |          |       |        |          |        |        |         |        |       |  |  |  |
| 2 PLACES   | ± 0.25                             | ± .014   |        |    |      |          |       |       |          |       |        |          |        |        |         |        |       |  |  |  |
| 1 PLACE  | ± 0.36                             | ± ---  |        |    |      |          |       |       |          |       |        |          |        |        |         |        |       |  |  |  |
| DRAFT WHERE APPLICABLE MUST REMAIN WITHIN DIMENSIONS   | MATERIAL NO.: SEE CHART<br>SIZE: C | THIS DRAWING CONTAINS INFORMATION THAT IS PROPRIETARY TO MOLEX INCORPORATED AND SHOULD NOT BE USED WITHOUT WRITTEN PERMISSION  |        |    |      |          |       |       |          |       |        |          |        |        |         |        |       |  |  |  |

| 13          |              | 12       |                | 11            |              | 10       |              | 9           |              | 8          |              | 7           |  | 6        |  | 5           |  | 4        |  | 3           |  | 2        |  | 1 |  |
|-------------|--------------|----------|----------------|---------------|--------------|----------|--------------|-------------|--------------|------------|--------------|-------------|--|----------|--|-------------|--|----------|--|-------------|--|----------|--|---|--|
| A-422 19-NA |              |          |                | A-422 19-NA-R |              |          |              | A-422 19-NB |              |            |              | A-422 19-NC |  |          |  | A-422 19-ND |  |          |  | A-422 19-NE |  |          |  |   |  |
| PART NO.    |              | ENG. NO. |                | PART NO.      |              | ENG. NO. |              | PART NO.    |              | ENG. NO.   |              | PART NO.    |  | ENG. NO. |  | PART NO.    |  | ENG. NO. |  | PART NO.    |  | ENG. NO. |  |   |  |
| 22-43-3020  | A-422 19-2A  |          | A-422 19-2A-R  | 22-44-6026    | A-422 19-2B  |          | A-422 19-2C  | 22-44-6022  | A-422 19-2D  | 22-44-6024 | A-422 19-2E  |             |  |          |  |             |  |          |  |             |  |          |  |   |  |
| 22-43-3030  | A-422 19-3A  |          | A-422 19-3A-R  | 22-44-6036    | A-422 19-3B  |          | A-422 19-3C  | 22-44-6032  | A-422 19-3D  | 22-44-6034 | A-422 19-3E  |             |  |          |  |             |  |          |  |             |  |          |  |   |  |
| 22-43-3040  | A-422 19-4A  |          | A-422 19-4A-R  | 22-44-6046    | A-422 19-4B  |          | A-422 19-4C  | 22-44-6042  | A-422 19-4D  | 22-44-6044 | A-422 19-4E  |             |  |          |  |             |  |          |  |             |  |          |  |   |  |
| 22-43-3050  | A-422 19-5A  |          | A-422 19-5A-R  | 22-44-6056    | A-422 19-5B  |          | A-422 19-5C  | 22-44-6052  | A-422 19-5D  | 22-44-6054 | A-422 19-5E  |             |  |          |  |             |  |          |  |             |  |          |  |   |  |
| 22-43-3060  | A-422 19-6A  |          | A-422 19-6A-R  |               | A-422 19-6B  |          | A-422 19-6C  | 22-44-6062  | A-422 19-6D  | 22-44-6064 | A-422 19-6E  |             |  |          |  |             |  |          |  |             |  |          |  |   |  |
| 22-43-3070  | A-422 19-7A  |          | A-422 19-7A-R  |               | A-422 19-7B  |          | A-422 19-7C  | 22-44-6072  | A-422 19-7D  | 22-44-6074 | A-422 19-7E  |             |  |          |  |             |  |          |  |             |  |          |  |   |  |
| 22-43-3080  | A-422 19-8A  |          | A-422 19-8A-R  |               | A-422 19-8B  |          | A-422 19-8C  | 22-44-6082  | A-422 19-8D  | 22-44-6084 | A-422 19-8E  |             |  |          |  |             |  |          |  |             |  |          |  |   |  |
| 22-43-3090  | A-422 19-9A  |          | A-422 19-9A-R  |               | A-422 19-9B  |          | A-422 19-9C  | 22-44-6092  | A-422 19-9D  | 22-44-6094 | A-422 19-9E  |             |  |          |  |             |  |          |  |             |  |          |  |   |  |
| 22-43-3100  | A-422 19-10A |          | A-422 19-10A-R |               | A-422 19-10B |          | A-422 19-10C | 22-44-6102  | A-422 19-10D | 22-44-6104 | A-422 19-10E |             |  |          |  |             |  |          |  |             |  |          |  |   |  |
| 22-43-3110  | A-422 19-11A |          | A-422 19-11A-R |               | A-422 19-11B |          | A-422 19-11C |             | A-422 19-11D |            | A-422 19-11E |             |  |          |  |             |  |          |  |             |  |          |  |   |  |
| 22-43-3120  | A-422 19-12A |          | A-422 19-12A-R |               | A-422 19-12B |          | A-422 19-12C | 22-44-6122  | A-422 19-12D |            | A-422 19-12E |             |  |          |  |             |  |          |  |             |  |          |  |   |  |
| 22-43-3130  | A-422 19-13A |          | A-422 19-13A-R |               | A-422 19-13B |          | A-422 19-13C |             | A-422 19-13D |            | A-422 19-13E |             |  |          |  |             |  |          |  |             |  |          |  |   |  |
| 22-43-3140  | A-422 19-14A |          | A-422 19-14A-R |               | A-422 19-14B |          | A-422 19-14C | 22-44-6142  | A-422 19-14D |            | A-422 19-14E |             |  |          |  |             |  |          |  |             |  |          |  |   |  |
| 22-43-3150  | A-422 19-15A |          | A-422 19-15A-R |               | A-422 19-15B |          | A-422 19-15C |             | A-422 19-15D |            | A-422 19-15E |             |  |          |  |             |  |          |  |             |  |          |  |   |  |

| A-422 19-NF |              | A-422 19-NG |              |          |  | A-422 19-NA-I |                | A-422 19-NH |              |          |  |
|-------------|--------------|-------------|--------------|----------|--|---------------|----------------|-------------|--------------|----------|--|
| PART NO.    |              | ENG. NO.    |              | PART NO. |  | ENG. NO.      |                | PART NO.    |              | ENG. NO. |  |
| 22-44-6021  | A-422 19-2F  | 22-44-6023  | A-422 19-2G  |          |  | 22-43-3022    | A-422 19-2A-I  |             | A-422 19-2H  |          |  |
| 22-44-6031  | A-422 19-3F  | 22-44-6033  | A-422 19-3G  |          |  | 22-43-3032    | A-422 19-3A-I  |             | A-422 19-3H  |          |  |
| 22-44-6041  | A-422 19-4F  | 22-44-6043  | A-422 19-4G  |          |  | 22-43-3042    | A-422 19-4A-I  |             | A-422 19-4H  |          |  |
| 22-44-6051  | A-422 19-5F  | 22-44-6053  | A-422 19-5G  |          |  | 22-43-3052    | A-422 19-5A-I  |             | A-422 19-5H  |          |  |
| 22-44-6061  | A-422 19-6F  | 22-44-6063  | A-422 19-6G  |          |  | 22-43-3062    | A-422 19-6A-I  |             | A-422 19-6H  |          |  |
| 22-44-6071  | A-422 19-7F  | 22-44-6073  | A-422 19-7G  |          |  | 22-43-3072    | A-422 19-7A-I  |             | A-422 19-7H  |          |  |
|             | A-422 19-8F  | 22-44-6083  | A-422 19-8G  |          |  | 22-43-3082    | A-422 19-8A-I  |             | A-422 19-8H  |          |  |
| 22-44-6091  | A-422 19-9F  | 22-44-6093  | A-422 19-9G  |          |  | 22-43-3092    | A-422 19-9A-I  |             | A-422 19-9H  |          |  |
| 22-44-6101  | A-422 19-10F | 22-44-6103  | A-422 19-10G |          |  | 22-43-3102    | A-422 19-10A-I |             | A-422 19-10H |          |  |
|             | A-422 19-11F | 22-44-6113  | A-422 19-11G |          |  | 22-43-3112    | A-422 19-11A-I |             | A-422 19-11H |          |  |
|             | A-422 19-12F | 22-44-6123  | A-422 19-12G |          |  | 22-43-3122    | A-422 19-12A-I |             | A-422 19-12H |          |  |
|             | A-422 19-13F | 22-44-6133  | A-422 19-13G |          |  | 22-43-3132    | A-422 19-13A-I |             | A-422 19-13H |          |  |
|             | A-422 19-14F | 22-44-6143  | A-422 19-14G |          |  | 22-43-3142    | A-422 19-14A-I |             | A-422 19-14H |          |  |
|             | A-422 19-15F | 22-44-6153  | A-422 19-15G |          |  | 22-43-3152    | A-422 19-15A-I |             | A-422 19-15H |          |  |

| ADD 22-44-6122/6142<br>EC NO: UCP2007-1815<br>DRWN: PRIDDER 2007/01/26<br>CHKD: ADERR 2007/01/30<br>APPR: F SMITH 2007/02/01 | QUALITY SYMBOLS  | GENERAL TOLERANCES (UNLESS SPECIFIED)  | DIMENSION STYLE | SCALE                             | DESIGN UNITS     | THIRD ANGLE PROJECTION |          |       |       |       |          |       |       |       |          |       |       |       |         |       |       |       |       |     |        |  |
|--|--|--|-----------------|-----------------------------------|------------------|------------------------|----------|-------|-------|-------|----------|-------|-------|-------|----------|-------|-------|-------|---------|-------|-------|-------|-------|-----|--------|--|
|  |  | <table border="1"> <tr><th colspan="2">mm</th><th colspan="2">INCH</th></tr> <tr><td>4 PLACES</td><td>± ---</td><td>± ---</td><td>± ---</td></tr> <tr><td>3 PLACES</td><td>± ---</td><td>± ---</td><td>± ---</td></tr> <tr><td>2 PLACES</td><td>± ---</td><td>± ---</td><td>± ---</td></tr> <tr><td>1 PLACE</td><td>± ---</td><td>± ---</td><td>± ---</td></tr> </table> | mm              |                                   | INCH             |                        | 4 PLACES | ± --- | ± --- | ± --- | 3 PLACES | ± --- | ± --- | ± --- | 2 PLACES | ± --- | ± --- | ± --- | 1 PLACE | ± --- | ± --- | ± --- | IN/MM | --- | METRIC |  |
|  | mm   |  | INCH            |                                   |                  |                        |          |       |       |       |          |       |       |       |          |       |       |       |         |       |       |       |       |     |        |  |
|  | 4 PLACES   | ± ---  | ± ---           | ± ---                             |                  |                        |          |       |       |       |          |       |       |       |          |       |       |       |         |       |       |       |       |     |        |  |
| 3 PLACES   | ± ---  | ± ---  | ± ---           |                                   |                  |                        |          |       |       |       |          |       |       |       |          |       |       |       |         |       |       |       |       |     |        |  |
| 2 PLACES   | ± ---  | ± ---  | ± ---           |                                   |                  |                        |          |       |       |       |          |       |       |       |          |       |       |       |         |       |       |       |       |     |        |  |
| 1 PLACE  | ± ---  | ± ---  | ± ---           |                                   |                  |                        |          |       |       |       |          |       |       |       |          |       |       |       |         |       |       |       |       |     |        |  |
| DRAWN BY: SCHMIDGALL<br>CHECKED BY: EDGLEY<br>APPROVED BY: LENZ  | DATE: 1991/05/17<br>DATE: 1991/05/17<br>DATE: 1991/05/17 | TITLE  |                 | 2.5 MM I.D. CONNECTOR ADDEMBLY    |                  |                        |          |       |       |       |          |       |       |       |          |       |       |       |         |       |       |       |       |     |        |  |
| MATERIAL NO. SEE CHART<br>DRAFT WHERE APPLICABLE MUST REMAIN WITHIN DIMENSIONS   | SIZE C   | THIS DRAWING CONTAINS INFORMATION THAT IS PROPRIETARY TO MOLEX INCORPORATED AND SHOULD NOT BE USED WITHOUT WRITTEN PERMISSION  |                 | MOLEX INCORPORATED<br>SDA-42219-* | SHEET NO. 2 OF 3 |                        |          |       |       |       |          |       |       |       |          |       |       |       |         |       |       |       |       |     |        |  |