

PLEASE CHECK WWW.MOLEX.COM FOR LATEST PART INFORMATION

Part Number: [0930711001](#)
Status: **Active**
Overview: [RAST 2.5 Connector System](#)
Description: 5.00mm (.197") Pitch Appli-Mate RAST 2.5 Header, Vertical, 3 Circuits, Reference K00, Glow Wire Compatible

Documents:

[3D Model](#) [RoHS Certificate of Compliance \(PDF\)](#)
[Drawing \(PDF\)](#)

Agency Certification

CSA LR19980
 UL E29179

General

Product Family PCB Headers
 Series [93071](#)
 Application Wire-to-Board
 Overview [RAST 2.5 Connector System](#)
 Product Name RAST 2.5

Physical

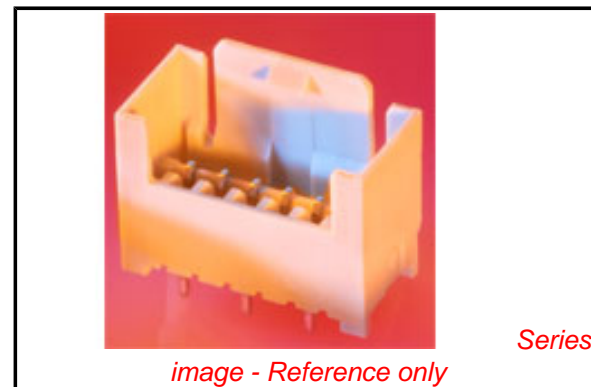
Breakaway No
 Circuits (Loaded) 3
 Circuits (maximum) 3
 Color - Resin Natural
 Durability (mating cycles max) 10
 First Mate / Last Break No
 Flammability 94V-0
 Glow-Wire Compliant Yes
 Guide to Mating Part No
 Keying to Mating Part None
 Lock to Mating Part Yes
 Material - Metal Brass
 Material - Plating Mating Tin
 Material - Plating Termination Tin
 Material - Resin Nylon
 Number of Rows 1
 Orientation Vertical
 PCB Thickness Recommended (in) 0.059 In
 PCB Thickness Recommended (mm) 1.50 mm
 Packaging Type Carton
 Pitch - Mating Interface (in) 0.196 In
 Pitch - Mating Interface (mm) 5.00 mm
 Polarized to PCB Yes
 Stackable No
 Surface Mount Compatible (SMC) No
 Temperature Range - Operating -20C TO +120C
 Termination Interface: Style Through Hole

Electrical

Current - Maximum per Contact 6A
 Voltage - Maximum 250V

Material Info

Reference - Drawing Numbers



EU RoHS

ELV and RoHS Compliant
REACH SVHC
 Not Reviewed
Halogen-Free Status
Not Reviewed

China RoHS



Need more information on product environmental compliance?

Email productcompliance@molex.com
 For a multiple part number RoHS Certificate of Compliance, [click here](#)

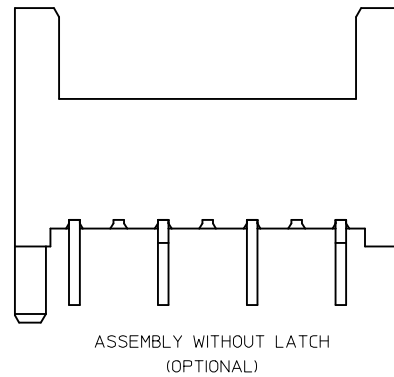
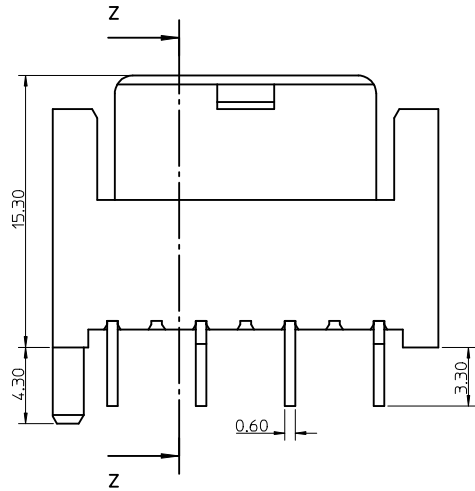
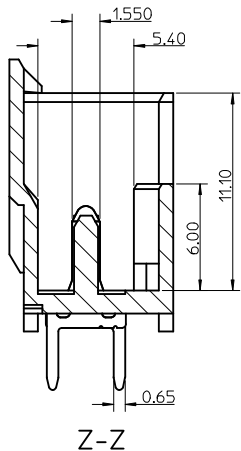
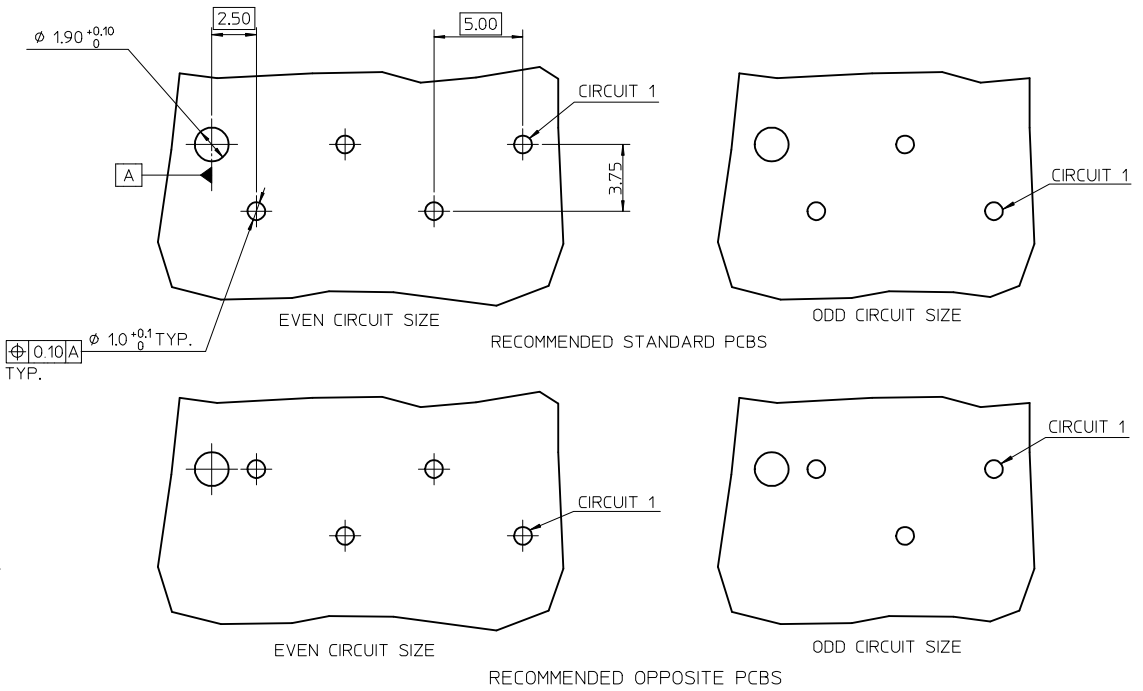
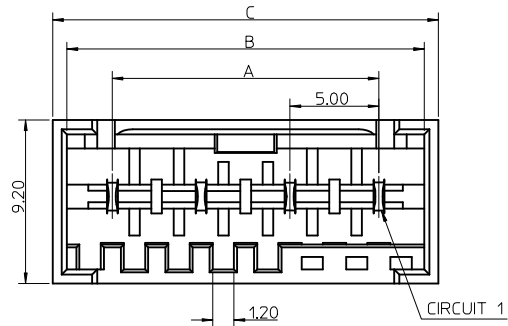
Please visit the [Contact Us](#) section for any non-product compliance questions.

Search Parts in this Series
[93071Series](#)

This document was generated on 05/28/2010

PLEASE CHECK WWW.MOLEX.COM FOR LATEST PART INFORMATION

| CCT | A | B | C |
|-----|------|------|------|
| 2 | 5.0 | 10.1 | 11.7 |
| 3 | 10.0 | 15.1 | 16.7 |
| 4 | 15.0 | 20.1 | 21.7 |
| 5 | 20.0 | 25.1 | 26.7 |
| 6 | 25.0 | 30.1 | 31.7 |
| 7 | 30.0 | 35.1 | 36.7 |
| 8 | 35.0 | 40.1 | 41.7 |



NOTES:

- MATERIAL: HOUSING - PA66 25% G/F, UL94 V-0
COLOUR: NATURAL
TERMINAL - BRASS
PLATING - 3-7um Sn over 1.27um Min Ni
- PARTS PACKED AS PER PK-93070-001
- PRODUCT SPECIFICATION: PS-99039-0040
- RECOMMENDED PCB THICKNESS: 1.5+/-0.14mm

| ADD PART NUMBERS | | QUALITY SYMBOLS | GENERAL TOLERANCES (UNLESS SPECIFIED) | | DIMENSION STYLE | | SCALE | DESIGN UNITS | THIRD ANGLE PROJECTION | |
|------------------|------------|-----------------|------------------------------------------------------|------|-------------------------------------------------------------------------------------------------------------------------------|------------|---------------------------|-------------------------------------------------------------------|------------------------|--|
| EC NO: | DATE | | mm | INCH | MM ONLY | 5:1 | METRIC | | | |
| E2010-0124 | 2009/10/07 | ▽=0 ▽=0 | 4 PLACES ±--- | ±--- | DRAWN BY | DATE | TITLE | RAST 2.5 APPLI-MATE VERTICAL MALE HEADER 5MM PITCH | | |
| DRWN:TTOURISH | 2009/10/08 | | 3 PLACES ±0.05 | ±--- | TTOURISH | 2008/03/18 | | | | |
| CHKD:BRUTLE | 2009/10/08 | | 2 PLACES ±0.10 | ±--- | CHECKED BY | DATE | | | | |
| APPR:BMAGUIRE | 2009/10/08 | | 1 PLACE ±0.20 | ±--- | BRUTLE | 2008/03/18 | | | | |
| | | | ANGULAR ± 2 ° | | APPROVED BY | DATE | | | | |
| | | | DRAFT WHERE APPLICABLE MUST REMAIN WITHIN DIMENSIONS | | BMAGUIRE | 2008/03/18 | MOLEX INCORPORATED | | | |
| | | | | | MATERIAL NO. | | DOCUMENT NO. | | SHEET NO. | |
| | | | | | SEE SHEET 2 | | SD-93071-001 | | 1 OF 2 | |
| | | | | | THIS DRAWING CONTAINS INFORMATION THAT IS PROPRIETARY TO MOLEX INCORPORATED AND SHOULD NOT BE USED WITHOUT WRITTEN PERMISSION | | | | | |

| 2 CIRCUIT | | | | | |
|----------------|-----------------------|------------------------|---------------|-------|----------------|
| MOLEX PART NO. | BLOCKED POSITION KEYS | TERMINAL VOID POSITION | CONFIGURATION | LATCH | CCT 1 POSITION |
| 93071-0001 | NONE | 2 | | YES | STANDARD |
| 93071-0002 | d | 2 | | YES | STANDARD |
| 93071-0003 | b | 2 | | YES | STANDARD |
| 93071-0004 | b d | 2 | | YES | STANDARD |
| 93071-0005 | a c | 2 | | YES | STANDARD |
| 93071-0006 | a d | 2 | | YES | STANDARD |
| 93071-0007 | a | 2 | | YES | STANDARD |
| 93071-0008 | a b | 2 | | YES | STANDARD |
| 93071-0009 | b c | 2 | | YES | STANDARD |
| 93071-0010 | c d | 2 | | YES | STANDARD |
| 93071-0011 | a b c | 2 | | YES | STANDARD |
| 93071-0012 | a c d | 2 | | YES | STANDARD |
| 93071-0013 | b c d | 2 | | YES | STANDARD |
| 93071-0014 | ALL | 2 | | YES | STANDARD |

| 3 CIRCUIT | | | | | |
|----------------|-----------------------|------------------------|---------------|-------|----------------|
| MOLEX PART NO. | BLOCKED POSITION KEYS | TERMINAL VOID POSITION | CONFIGURATION | LATCH | CCT 1 POSITION |
| 93071-1001 | NONE | 2, 4 | | YES | STANDARD |
| 93071-1002 | a c d e | 2, 4 | | YES | STANDARD |
| 93071-1003 | b c d e | 2, 4 | | YES | STANDARD |
| 93071-1004 | c | 2, 4 | | YES | STANDARD |
| 93071-1005 | d e f | 2, 4 | | YES | STANDARD |

| 4 CIRCUIT | | | | | |
|----------------|-----------------------|------------------------|---------------|-------|----------------|
| MOLEX PART NO. | BLOCKED POSITION KEYS | TERMINAL VOID POSITION | CONFIGURATION | LATCH | CCT 1 POSITION |
| 93071-2001 | NONE | 2, 4, 6 | | YES | STANDARD |
| 93071-2002 | b c d e f h | 2, 4, 6 | | YES | STANDARD |
| 93071-2003 | b c d e f g | 2, 4, 6 | | YES | STANDARD |
| 93071-2004 | b c d f | 2, 4, 6 | | YES | STANDARD |

| 5 CIRCUIT | | | | | |
|----------------|-----------------------|------------------------|---------------|-------|----------------|
| MOLEX PART NO. | BLOCKED POSITION KEYS | TERMINAL VOID POSITION | CONFIGURATION | LATCH | CCT 1 POSITION |
| 93071-3001 | NONE | 2, 4, 6, 8 | | YES | STANDARD |

| 6 CIRCUIT | | | | | |
|----------------|-----------------------|------------------------|---------------|-------|----------------|
| MOLEX PART NO. | BLOCKED POSITION KEYS | TERMINAL VOID POSITION | CONFIGURATION | LATCH | CCT 1 POSITION |
| 93071-4001 | NONE | 2, 4, 6, 8, 10 | | YES | STANDARD |

| 7 CIRCUIT | | | | | |
|----------------|-----------------------|------------------------|---------------|-------|----------------|
| MOLEX PART NO. | BLOCKED POSITION KEYS | TERMINAL VOID POSITION | CONFIGURATION | LATCH | CCT 1 POSITION |
| 93071-5001 | NONE | 2, 4, 6, 8, 10, 12 | | YES | STANDARD |

| 8 CIRCUIT | | | | | |
|----------------|-----------------------|------------------------|---------------|-------|----------------|
| MOLEX PART NO. | BLOCKED POSITION KEYS | TERMINAL VOID POSITION | CONFIGURATION | LATCH | CCT 1 POSITION |
| 93071-6001 | NONE | 2, 4, 6, 8, 10, 12, 14 | | YES | STANDARD |

| | | | | | | |
|----------------------------------------------------------------------------------------------|------------------------------------------------------|-------------------------------|-------------------------------------------------------------------------------------------------------------------------------------------------------------|------------------------------------------------------------------------------------------------------------------------------------------------------------------------------|-------------------------------------------------------------------------------------------------------------------------------|------------------------------------------------------------------------------------------------------------------------------------------------------------|
| SEE SHEET 1 EC NO: E2010-0124 DRAWN: TOURISH CHKD: BRITTLE APPR: BMAGUIRE | 2009/10/07 2009/10/08 2009/10/08 | QUALITY SYMBOLS ▽=0 ▽=0 | GENERAL TOLERANCES (UNLESS SPECIFIED) mm INCH 4 PLACES ±.05 ±.002 3 PLACES ±.05 ±.002 2 PLACES ±.10 ±.004 1 PLACE ±.20 ±.008 ANGULAR ± 2° | DIMENSION STYLE MM ONLY DRAWN BY DATE TOURISH 2008/03/18 CHECKED BY DATE BRITTLE 2008/03/18 APPROVED BY DATE BMAGUIRE 2008/03/18 MATERIAL NO. | SCALE 5:1 DESIGN UNITS METRIC THIRD ANGLE PROJECTION | RAST 2.5 APPLI-MATE VERTICAL MALE HEADER 5MM PITCH MOLEX INCORPORATED DOCUMENT NO. SD-93071-001 SHEET NO. 2 OF 2 |
| | DRAFT WHERE APPLICABLE MUST REMAIN WITHIN DIMENSIONS | | | SEE CHARTS | THIS DRAWING CONTAINS INFORMATION THAT IS PROPRIETARY TO MOLEX INCORPORATED AND SHOULD NOT BE USED WITHOUT WRITTEN PERMISSION | |
| | | | | SIZE 1 | | |
| | | | | | | |