

PLEASE CHECK WWW.MOLEX.COM FOR LATEST PART INFORMATION

Part Number: [0875520507](#)
Status: **Active**
Description: 1.27mm (.050") Pitch EBBI™ 50D Receptacle, Through Hole, Right Angle, with Beveled Metal Pins, 0.76µm (30µ") Gold (Au) Selective Plating, 50 Circuits, Leadfree

Documents:

[3D Model](#) [Product Specification PS-87552-006 \(PDF\)](#)
[Drawing \(PDF\)](#) [RoHS Certificate of Compliance \(PDF\)](#)

General

Product Family PCB Receptacles
 Series [87552](#)
 Application Board-to-Board
 Product Name EBBI™

Physical

Circuits (Loaded) 50
 Color - Resin Black
 Durability (mating cycles max) 500
 Glow-Wire Compliant No
 Lock to Mating Part None
 Material - Metal Phosphor Bronze
 Material - Plating Mating Gold
 Material - Plating Termination Tin
 Material - Resin High Temperature Thermoplastic
 Number of Rows 4
 Orientation Right Angle
 PC Tail Length (in) 0.110 In
 PC Tail Length (mm) 2.80 mm
 PCB Locator Yes
 PCB Retention Yes
 PCB Thickness Recommended (in) 0.062 In
 PCB Thickness Recommended (mm) 1.60 mm
 Packaging Type Tray
 Pitch - Mating Interface (in) 0.050 In
 Pitch - Mating Interface (mm) 1.27 mm
 Plating min: Mating (µin) 30.4
 Plating min: Mating (µm) 0.76
 Plating min: Termination (µin) 101.6
 Plating min: Termination (µm) 2.54
 Polarized to PCB Yes
 Surface Mount Compatible (SMC) Yes
 Temperature Range - Operating -55°C to +105°C
 Termination Interface: Style Through Hole

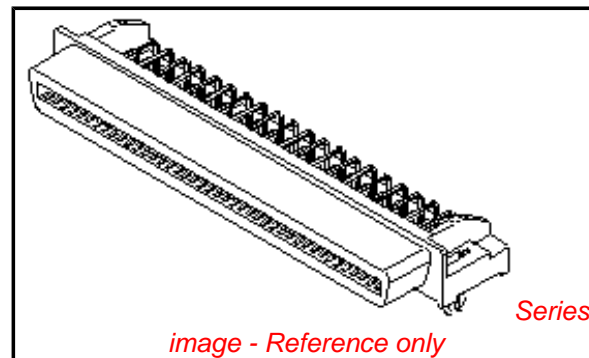
Electrical

Current - Maximum per Contact 1A
 Voltage - Maximum 30V

Solder Process Data

Duration at Max. Process Temperature (seconds) 5
 Lead-free Process Capability SMC & Wave Capable (TH only)
 Max. Cycles at Max. Process Temperature 1
 Process Temperature max. C 270

Material Info



EU RoHS

**ELV and RoHS
 Compliant**
**REACH SVHC
 Contains SVHC: No**
**Halogen-Free
 Status**
Halogen-Free

China RoHS



**Need more information on product
 environmental compliance?**

Email productcompliance@molex.com
 For a multiple part number RoHS Certificate of Compliance, [click here](#)

Please visit the [Contact Us](#) section for any non-product compliance questions.

Search Parts in this Series

[87552Series](#)

Mates With

[71661](#)

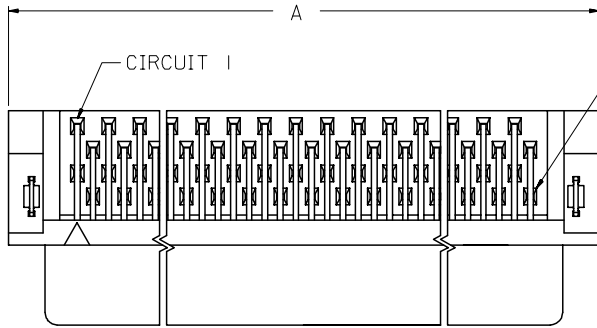
Reference - Drawing Numbers

Product Specification
Sales Drawing

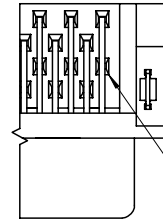
PS-87552-006
SD-87552-007

This document was generated on 03/18/2010

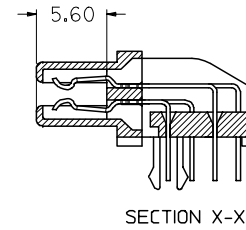
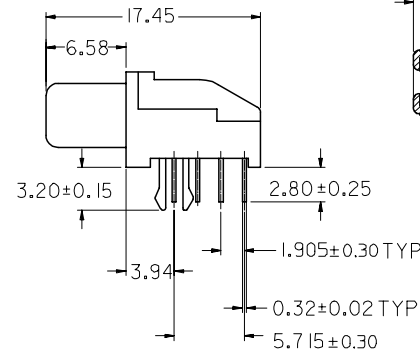
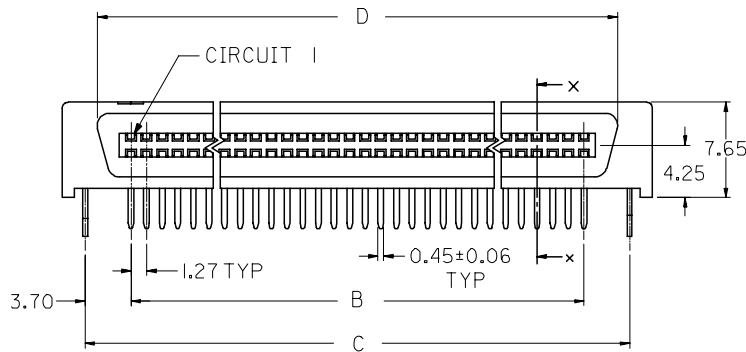
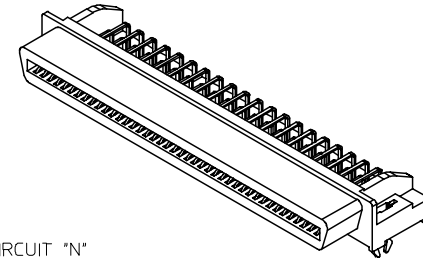
PLEASE CHECK WWW.MOLEX.COM FOR LATEST PART INFORMATION



FOR CIRCUIT SIZES 68 AND 80 ONLY



FOR CIRCUIT SIZE 50 ONLY



NOTES:

1. MATERIAL: HOUSING -- HIGH TEMP. THERMOPLASTIC, UL94-V0
TERMINALS -- COPPER ALLOY
2. PLATING:
 2A 0.75µM MIN. GOLD IN SELECTIVE CONTACT AREA AND
 2.5µM MIN. TIN IN SOLDER TAIL AREA, BOTH
 OVER 1.27µM MIN. NICKEL.
3. ASSEMBLY MATES WITH MOLEX P/N 71661-****.
4. RECOMMENDED P.C. BOARD THICKNESS IS 1.60MM.
5. PRODUCT SPEC. NO.: PS-87552-006
6. SEE TABLE ON SHEET 2 FOR ASSEMBLY PART NUMBERS.

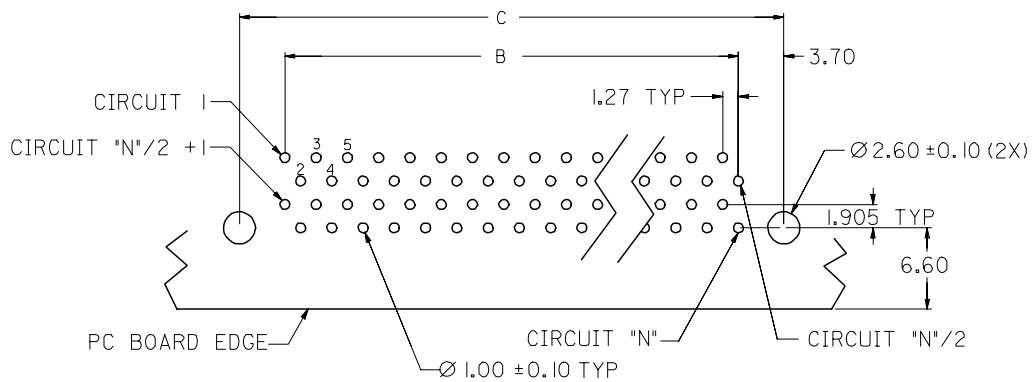
REVISED EC NO: S2008-0347 DRWN:SKANG CHKD:ATSEE APPR:MLONG	2007/11/12 2007/11/12 2007/11/14	DESCRIPTION H3	QUALITY SYMBOLS ▽=0 ▽=0
	REV		

GENERAL TOLERANCES (UNLESS SPECIFIED)	
mm	INCH
4 PLACES ± ---	± ---
3 PLACES ± ---	± ---
2 PLACES ± 0.3	± ---
1 PLACE ± ---	± ---
ANGULAR ± 3 °	
DRAFT WHERE APPLICABLE MUST REMAIN WITHIN DIMENSIONS	

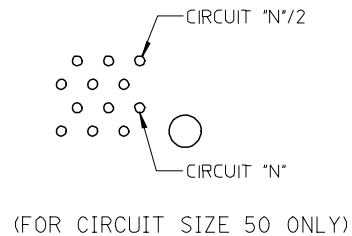
DIMENSION STYLE MM ONLY	
DRAWN BY	DATE
DS0H	1997/04/01
CHECKED BY	DATE
KCLING	1997/05/06
APPROVED BY	DATE
SKT0H	1997/05/08
MATERIAL NO.	
SEE TABLE	
SIZE	A3

SCALE NTS	DESIGN UNITS METRIC	THIRD ANGLE PROJECTION
EBBI, 1.27MM PITCH RECEPTACLE, R/A		
MOLEX INCORPORATED		SHEET NO. 1 OF 2
DOCUMENT NO. SD-87552-007		

	10	9	8	7	6	5	4	3	2	1
	D	C	B	A	CKT SIZE	ASSEMBLY PART NUMBER				
F	36.02	37.88	30.48	41.70	50	87552-0507				
	47.45	49.31	41.91	53.13	68	87552-0687				
	55.07	56.93	49.53	60.75	80	87552-0807				



RECOMMENDED PC BOARD LAYOUT
COMPONENT SIDE
(FOR CIRCUIT SIZES 68 AND 80 ONLY)



REVISED EC NO: S2008-0347 DRWN:SKANG CHKD:ATSEE APPR:MLONG	DESCRIPTION 2007/11/12 2007/11/12 2007/11/14	QUALITY SYMBOLS	GENERAL TOLERANCES (UNLESS SPECIFIED)		DIMENSION STYLE MM ONLY		SCALE NTS	DESIGN UNITS METRIC	THIRD ANGLE PROJECTION		
		$\nabla=0$	4 PLACES	mm	INCH	DRAWN BY DSOH	DATE 1997/04/01	TITLE EBBI, 1.27MM PITCH RECEPTACLE, R/A			
		$\nabla C=0$	3 PLACES			CHECKED BY KCLING	DATE 1997/05/06				
			2 PLACES	± 0.3	\pm		APPROVED BY SKTOH	DATE 1997/05/08	MOLEX INCORPORATED		SHEET NO. 2 OF 2
H3	REV		DRAFT WHERE APPLICABLE MUST REMAIN WITHIN DIMENSIONS		SEE TABLE		DOCUMENT NO. SD-87552-007				