

**PLEASE CHECK WWW.MOLEX.COM FOR LATEST PART INFORMATION**

**Part Number:** [0351530300](#)  
**Status:** **Active**  
**Description:** 6.90/11.70mm (.272/.461") Pitch, 6.35mm (250") Tab Wire-to-Board Housing for Capacitor, Female, 3 Circuits

**Documents:**

[Drawing \(PDF\)](#) [RoHS Certificate of Compliance \(PDF\)](#)  
[Product Specification PS-35153-001 \(PDF\)](#)

**General**

Product Family Crimp Housings  
 Series [35153](#)  
 Product Name N/A

**Physical**

Circuits (maximum) 3  
 Color - Resin Natural  
 Gender Female  
 Glow-Wire Compliant No  
 Material - Resin Polyester  
 Number of Rows 1  
 Packaging Type Bag  
 Panel Mount No  
 Pitch - Mating Interface (in) 0.272 In, 0.461 In  
 Pitch - Mating Interface (mm) 11.70 mm, 6.90 mm  
 Temperature Range - Operating -40°C to +120°C

**Material Info**

**Reference - Drawing Numbers**

Product Specification PS-35153-001  
 Sales Drawing SD-35153-0300

**EU RoHS**

**ELV and RoHS Compliant**  
**REACH SVHC**  
 Not Reviewed  
**Halogen-Free Status**

**Not Reviewed**

**China RoHS**



**Need more information on product environmental compliance?**

Email [productcompliance@molex.com](mailto:productcompliance@molex.com)  
 For a multiple part number RoHS Certificate of Compliance, [click here](#)

Please visit the [Contact Us](#) section for any non-product compliance questions.

**Search Parts in this Series**

[35153Series](#)

**Mates With**

Appliance Capacitor

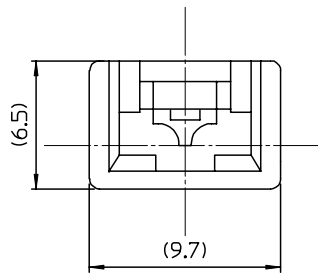
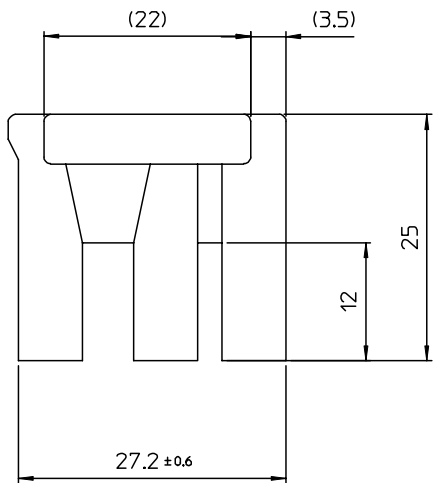
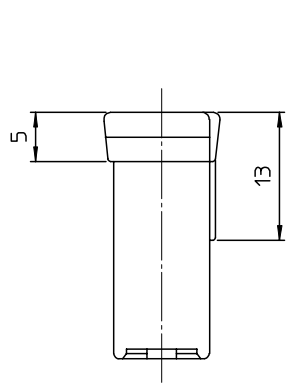
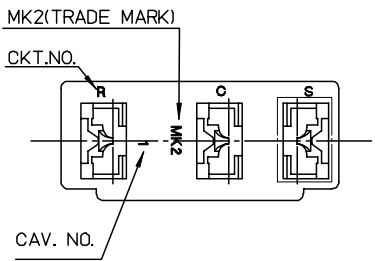
**Use With**

[35725-40\\*0](#)|[35725-41\\*0](#)|[35725-42\\*0](#)

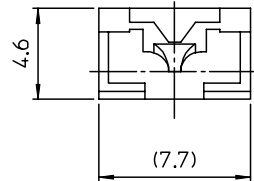
10 9 8 7 6 5 4 3 2 1

F  
E  
D  
C  
B  
A

F  
E  
D  
C  
B  
A



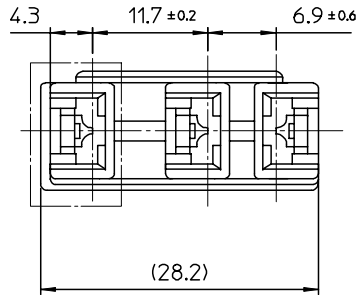
DEATIL "A"



DEATIL "B"

NOTES

1. MATERIAL : PBT UL94V-0.G/F 15% NATURAL COLOR
2. APPLICABLE TERMINALS : 35725-40\*0/41\*0/42\*0



REVISED EC NO: KOR2008-0009 DRWN: JH.PARK 2007/07/18 CHKD: WY. YANG 2007/08/20 APPR: YUNSIKKIM 2007/08/20	QUALITY SYMBOLS	GENERAL TOLERANCES (UNLESS SPECIFIED)	DIMENSION STYLE	SCALE	DESIGN UNITS	THIRD ANGLE PROJECTION																		
	$\nabla = 0$ $\nabla C = 0$	<table border="1"> <thead> <tr> <th></th> <th>mm</th> <th>INCH</th> </tr> </thead> <tbody> <tr> <td>4 PLACES</td> <td>± ---</td> <td>± ---</td> </tr> <tr> <td>3 PLACES</td> <td>± 0.005</td> <td>± ---</td> </tr> <tr> <td>2 PLACES</td> <td>± 0.05</td> <td>± ---</td> </tr> <tr> <td>1 PLACE</td> <td>± 0.1</td> <td>± ---</td> </tr> <tr> <td colspan="3">ANGULAR ± °</td> </tr> </tbody> </table>		mm	INCH	4 PLACES	± ---	± ---	3 PLACES	± 0.005	± ---	2 PLACES	± 0.05	± ---	1 PLACE	± 0.1	± ---	ANGULAR ± °			MM ONLY	1:1	METRIC	
		mm	INCH																					
	4 PLACES	± ---	± ---																					
3 PLACES	± 0.005	± ---																						
2 PLACES	± 0.05	± ---																						
1 PLACE	± 0.1	± ---																						
ANGULAR ± °																								
DESCRIPTION	TITLE	DRAWN BY	DATE	CAPACITOR HOUSING-3P																				
		JH.PARK	2007/07/16																					
		CHECKED BY	DATE																					
		WY.YANG	2007/07/16																					
		APPROVED BY	DATE																					
		EH.JUNG		MOLEX INCORPORATED																				
		MATERIAL NO.	DOCUMENT NO.	SHEET NO.																				
		S351530300AA	SD-35153-0300	1 OF 01																				
		SIZE	THIS DRAWING CONTAINS INFORMATION THAT IS PROPRIETARY TO MOLEX INCORPORATED AND SHOULD NOT BE USED WITHOUT WRITTEN PERMISSION																					
		A3																						

9 8 7 6 5 4 3 2 1