

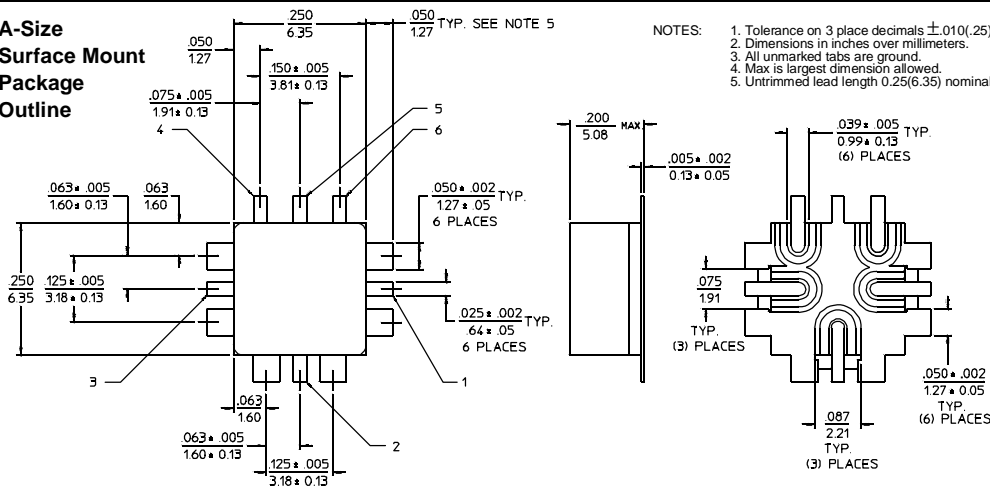


PRINCIPAL SPECIFICATIONS

Model Number	RF/LO Frequency, MHz	IF Frequency, MHz	LO Drive, dBm, Nom.	Conversion Loss, dB,		Port Isolation, Typ.			-1 dB Compr. Point	Input Intercept Point
				Max.	Typ.	L-R dB	L-X dB	R-X dB		
DMG-2A-750	10 - 1500	DC - 1000	+7	10	7	35	20	15	0 dBm (typ.)	+12 dBm (typ.)
DMG-4A-750	10 - 1500	DC - 1000	+13	10	8	35	20	15	+8 dBm (typ.)	+19 dBm (typ.)

All specifications are as measured in a 50Ω system, at nominal LO power, in a down converter application.

A-Size Surface Mount Package Outline



- NOTES:
1. Tolerance on 3 place decimals $\pm .010(.25)$ except as noted.
 2. Dimensions in inches over millimeters.
 3. All unmarked tabs are ground.
 4. Max is largest dimension allowed.
 5. Untrimmed lead length 0.25(6.35) nominal.

PIN NO.	FUNCTION
1	RF (R)
2	IF (X)
3	LO (L)
4	GROUND
5	GROUND
6	GROUND

General Notes:

1. The DMG-A series of surface mount Double Balanced Mixers covers the frequency range of 10 to 1500 MHz using miniature 4-diode rings suitable for both general purpose and high performance applications.
2. The DMG-A SMD package is designed for 50 Ω coplanar systems to insure satisfactory RF performance. The Kovar leads are supplied untrimmed (unless otherwise specified) to allow mounting the package in a variety of configurations.
3. Merrimac offers a broad selection of Double Balanced Mixers ideal for a variety of signal processing functions from 20 kHz to 20 GHz.
4. Merrimac mixers comply with MIL-M-28837 and may be supplied screened for compliance with additional specifications for military and space applications requiring the highest reliability.

03May96

GENERAL SPECIFICATIONS

Impedance:	50 Ω nom.
Noise Figure:	Within ± 1 dB of Conversion Loss
Maximum Input Power:	300 mW @ 25°C (derate linearly to 0 mW @ 125°C)
Usable LO Drive:	
DMG-2A-750:	+7 to +10 dBm
DMG-4A-750:	+10 to +17 dBm
Polarity Sense:	Positive
DC Offset Voltage:	3 mV typ.
Weight, nominal:	0.02 oz (0.5 g)
Operating Temperature:	-55° to +85°C