

**PLEASE CHECK WWW.MOLEX.COM FOR LATEST PART INFORMATION**

**Part Number:** [0512393003](#)  
**Status:** **Active**  
**Description:** CRC™ Shielded Rectangular I/O Plug Housing, For Plug Assembly, Female Terminal, Signal, 30 Circuits, Polarization Type B, Polarization Position C-4

**Documents:**

[Drawing \(PDF\)](#) [Product Specification PS-51238-018 \(PDF\)](#)  
[Product Specification PS-51238-010 \(PDF\)](#) [RoHS Certificate of Compliance \(PDF\)](#)

**Agency Certification**

CSA	LR19980
TUV	R72081037
UL	E29179

**General**

Product Family	I/O Connectors
Series	<a href="#">51239</a>
Application	N/A
Component Type	Housing
Product Name	CRC™
Type	N/A

**Physical**

Boot Color	N/A
Breakaway	No
Circuits (Loaded)	N/A
Circuits (maximum)	30
Color - Resin	Black
Flammability	94V-0
Gender	Plug
Keying to Mating Part	Yes
Lock to Mating Part	Yes
Material - Plating Mating	n/a
Material - Resin	Polyester
Number of Rows	6
Orientation	Vertical
PCB Locator	No
Packaging Type	Tray
Panel Mount	N/A
Pitch - Mating Interface (in)	0.118 In
Pitch - Mating Interface (mm)	3.00 mm
Pitch - Term. Interface (in)	0.118 In
Pitch - Term. Interface (mm)	3.00 mm
Polarized to Mating Part	Yes
Polarized to PCB	N/A
Ports	1
Surface Mount Compatible (SMC)	No
Temperature Range - Operating	-40°C to +105°C
Termination Interface: Style	N/A
Waterproof / Dustproof	No

**Electrical**

Current - Maximum per Contact	N/A
Shielded	No
Voltage - Maximum	250V AC (RMS)/DC

**Material Info**



**EU RoHS**

**ELV and RoHS Compliant**  
**REACH SVHC Contains SVHC: No**  
**Halogen-Free Status**  
**Not Reviewed**

**China RoHS**



**Need more information on product environmental compliance?**

Email [productcompliance@molex.com](mailto:productcompliance@molex.com)  
 For a multiple part number RoHS Certificate of Compliance, [click here](#)

Please visit the [Contact Us](#) section for any non-product compliance questions.

**Search Parts in this Series**

[51239Series](#)

**Mates With**

[51233](#)

**Use With**

[56380](#) plug shell body, [56120](#) and [56121](#) female terminal, [56381](#) plug shell cover

**Reference - Drawing Numbers**

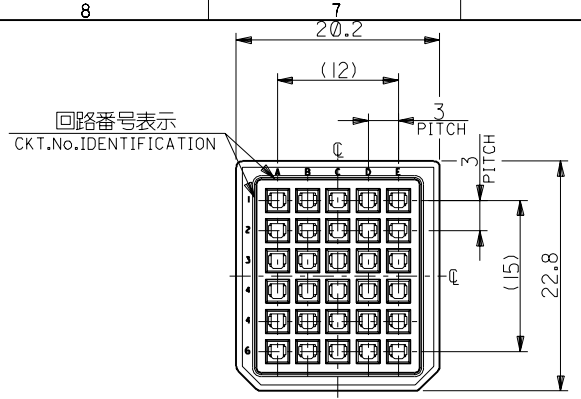
Product Specification  
Sales Drawing

PS-51238-010, PS-51238-018, RPS-51238-001  
SD-51239-006

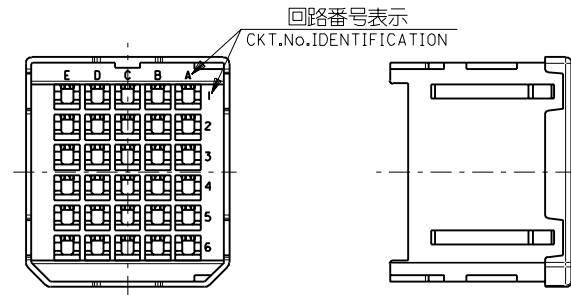
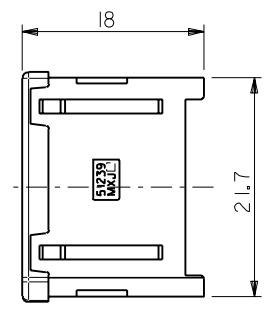
This document was generated on 04/06/2010

**PLEASE CHECK [WWW.MOLEX.COM](http://WWW.MOLEX.COM) FOR LATEST PART INFORMATION**

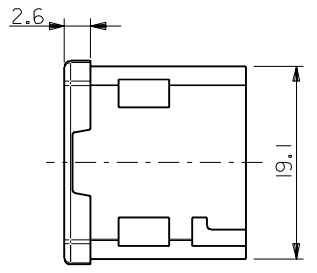
DWG. NO. SD-51239-006



嵌合側  
MATING SIDE



電線挿入側  
WIRE SIDE



注記  
NOTES

1. 材質 MATERIAL  
ガラス入りPBT樹脂 UL94V-0 色:黒  
HOUSING : PBT G.F. UL94V-0 COLOR : BLACK
2. 適用端子 : 56120-8\*90 , 56121-8\*90  
APPLICABLE CRIMP PIN : 56120-8\*90 , 56121-8\*90
3. 適用シエルボディ : 56380-3000  
APPLICABLE SHELL BODY : 56380-3000
4. 適用シエルカバー : 56381-3000  
APPLICABLE SHELL COVER : 56381-3000
5. 嵌合相手 : 51233-301\*  
MEET WITH : 51233-301\*

<誤嵌合防止キー(極性)タイプ> <POLARITY KEY TYPE>

51239-3001	51239-3002	51239-3003	51239-3004	51239-3005
STANDARD TYPE	A TYPE	B TYPE	C TYPE	D TYPE

B-3	D	51239-3005	51239-**0*	30
D-4	C	51239-3004		
C-4	B	51239-3003		
C-3	A	51239-3002		
—	STANDARD	51239-3001		
POLARITY POSITION (CIRCUIT No.)	POLARITY TYPE	MATERIAL No.	MODEL No.	CIRCUIT

DO NOT SCALE DRAWING

EC NO. DRAWN: CHK'g APPR:	EC NO. DRAWN: CHK'g APPR:	EC NO. DRAWN: CHK'g APPR:	REVISED 01/10/04 EC NO. J2002-0786 DRWN: S.AKIYAMA CHK'g: J.MIYAZAWA APPR: Y.O.ITO	RELEASED 01/02/09 EC NO. JD2001-1040 DRWN: S.AKIYAMA CHK'g: J.MIYAZAWA APPR: H.IKESUGI	MATERIAL 材料 注記参照 SEE NOTES	GENERAL TOLERANCES: (UNLESS SPECIFIED) 一般公差	SCALE 2-1 DESIGN UNITS <input checked="" type="checkbox"/> mm <input type="checkbox"/> INCH	THIRD ANGLE PROJECTION <input type="checkbox"/> mm <input type="checkbox"/> INCH <input checked="" type="checkbox"/> mm ONLY	SHT REVISE ON CAD ONLY	REV
			A	0	—	10 UNDER 未滿 ±0.2	DRAWN BY & DATE S. Akiyama 1/01/25	TITLE: COMPACT ROBOT CONN. (CRC) PLUG SOCKET HS'G		
					FINISH 仕上げ	10 OVER 30 UNDER 未滿 ±0.25	CHECKED BY & DATE J. Miyazawa / Y. Ito	Molex MOLEX INCORPORATED		
					WIRE RANGE 適用電線範囲	30 OVER 以上 ±0.3	APPROVED BY & DATE S. Akiyama		MATERIAL NO. SEE CHART	DRAWING NO. SD-51239-006
					INS. RANGE 被覆外径	ANGLE 角度 ±3°	CAD FILE NAME 51239006.S01	MATERIAL NO. SEE CHART	DRAWING NO. SD-51239-006	SHEET NO. 1 OF 1
THIS DRAWING CONTAINS INFORMATION THAT IS PROPRIETARY TO MOLEX INCORPORATED AND SHOULD NOT BE USED WITHOUT WRITTEN PERMISSION.										SIZE B