

PLEASE CHECK WWW.MOLEX.COM FOR LATEST PART INFORMATION

Part Number: [0741395031](#)
Status: **Active**
Description: 1.27mm (.050") Pitch EBJ™ 50D Plug, Surface Mount, Vertical, 30 Circuits, 4.37mm (.172") Retention Clip

Documents:

[3D Model](#) [Product Specification PS-71660 \(PDF\)](#)
[Drawing \(PDF\)](#) [RoHS Certificate of Compliance \(PDF\)](#)

General

Product Family PCB Headers
 Series [74139](#)
 Application Board-to-Board, Wire-to-Board
 Product Name EBJ™

Physical

Breakaway No
 Circuits (Loaded) 30
 Circuits (maximum) 30
 Color - Resin Black
 Durability (mating cycles max) 500
 Glow-Wire Compliant No
 Lock to Mating Part Yes
 Material - Metal Brass, Phosphor Bronze
 Material - Plating Mating Gold
 Material - Plating Termination Tin
 Material - Resin High Temperature Thermoplastic
 Number of Rows 2
 Orientation Vertical
 PCB Locator Yes
 PCB Retention Yes
 PCB Thickness Recommended (in) 0.120 In
 PCB Thickness Recommended (mm) 3.00 mm
 Packaging Type Tray
 Pitch - Mating Interface (in) 0.050 In
 Pitch - Mating Interface (mm) 1.27 mm
 Plating min: Mating (µin) 30
 Plating min: Mating (µm) 0.75
 Plating min: Termination (µin) 50
 Plating min: Termination (µm) 1.25
 Polarized to Mating Part Yes
 Shrouded Fully
 Stackable No
 Temperature Range - Operating -40°C to +105°C
 Termination Interface: Style Through Hole

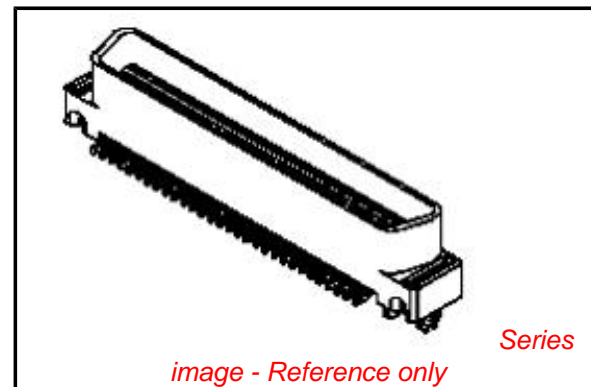
Electrical

Current - Maximum per Contact 1A
 Voltage - Maximum 30V

Solder Process Data

Duration at Max. Process Temperature (seconds) 40
 Lead-free Process Capability Reflow Capable (SMT only)
 Max. Cycles at Max. Process Temperature 3
 Process Temperature max. C 260

Material Info



EU RoHS

**ELV and RoHS
 Compliant**
**REACH SVHC
 Contains SVHC: No**
**Halogen-Free
 Status
 Not Reviewed**

China RoHS



**Need more information on product
 environmental compliance?**

Email productcompliance@molex.com
 For a multiple part number RoHS Certificate of Compliance, [click here](#)

Please visit the [Contact Us](#) section for any non-product compliance questions.

Search Parts in this Series

[74139Series](#)

Mates With

[71660](#) , [87552](#)

Reference - Drawing Numbers

Product Specification
Sales Drawing

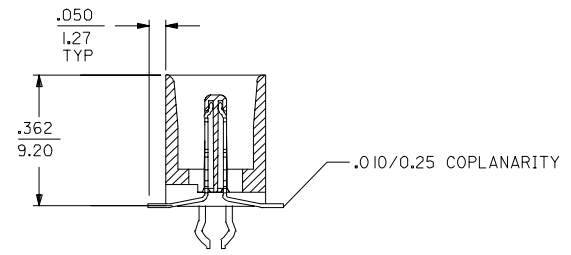
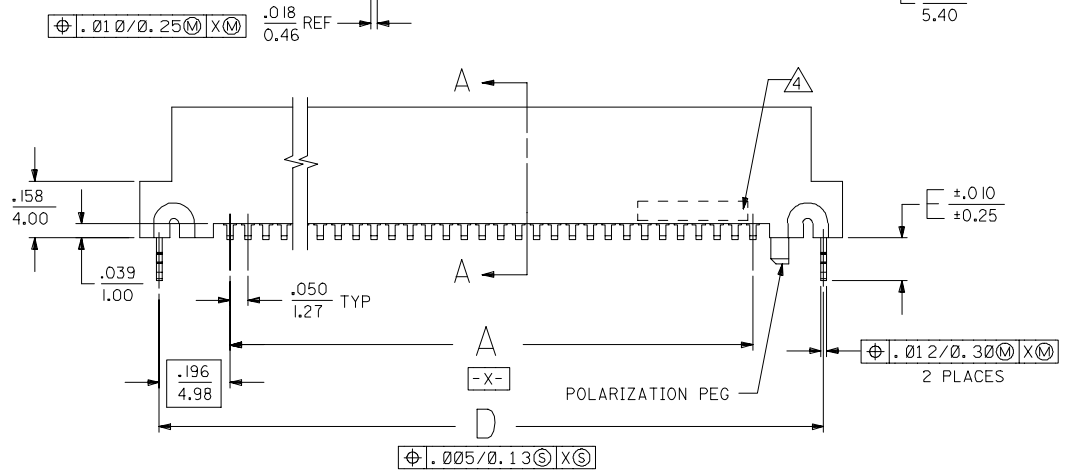
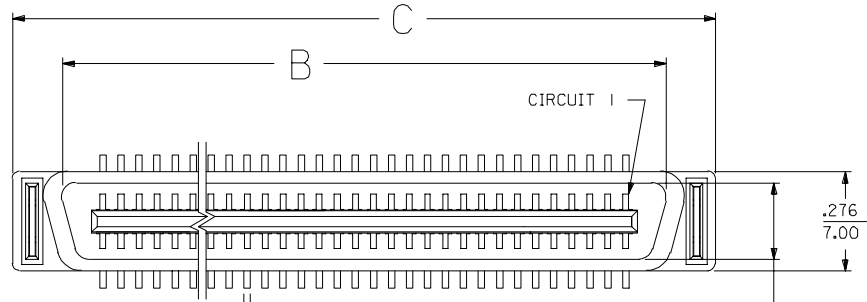
PS-71660
SD-74139-001

This document was generated on 04/08/2010

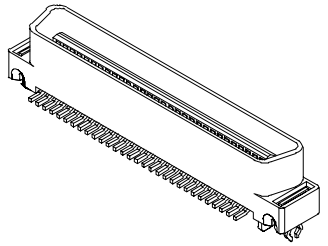
PLEASE CHECK WWW.MOLEX.COM FOR LATEST PART INFORMATION

NOTES:

- 1) MATERIALS:
HOUSING: GLASS-FILLED LCP (LIQUID CRYSTAL POLYMER)
UL 94 V 0, BLACK
TERMINALS: BRASS
BOARDLOCK: PHOSPHOR BRONZE
- 2) PLATING:
.000030/(0.00076) MINIMUM GOLD IN CONTACT AREA AND
.000050/(0.00127) MINIMUM TIN IN TAIL AREA OVER
.000075/(0.00191) MINIMUM NICKEL UNDERPLATING OVERALL.
- 3) ASSEMBLY MATES WITH MOLEX P/N SDA-71660-****.
CONFORMS TO PRODUCT SPECIFICATION PS-71660.
- 4) FOUR DIGIT DATE CODE (WK, YR), EXAMPLE => 26 96
LOCATED IN AREA INDICATED.
- 5) PACKAGED PER SPECIFICATION PK-70873-055.



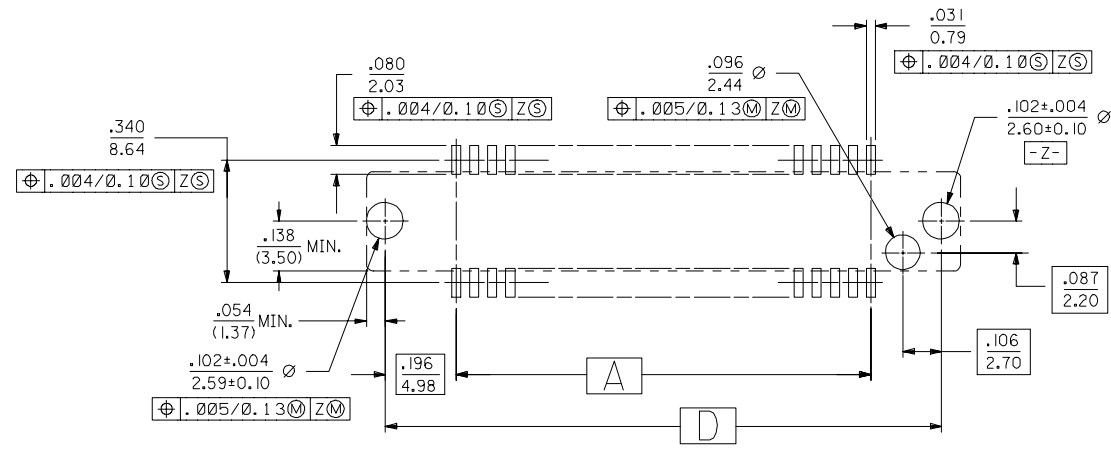
SECTION A-A
SCALE 4:1



60 CIRCUIT ASSEMBLY SHOWN
SCALE = 2:1

FIX PCB LAYOUT GEOM EC NO: UCP2007-2252 DRAWN: BBARKER 2007/05/06 CHKD: MBARRA 2007/05/17 APPR: SMILLER 2007/05/21	QUALITY SYMBOLS ▽=0 ▽=0	GENERAL TOLERANCES (UNLESS SPECIFIED)		DIMENSION STYLE IN/MM		SCALE 4:1	DESIGN UNITS INCH	THIRD ANGLE PROJECTION		
		4 PLACES ± --- ± ---	mm	INCH	DRAWN BY	DATE	TITLE			
		3 PLACES ± --- ± .005			BSMART	01/20/2005	SALES ASSY EBBI 50D VERT SMT PLUG-NO LATCHES, NO VAC CAP			
		2 PLACES ± 0.13 ± .01			CHECKED BY	DATE	MOLEX INCORPORATED			
1 PLACE ± 0.25 ± ---			BBARKER	01/20/2005	APPROVED BY		DATE	DOCUMENT NO.		
ANGULAR ±1/2°				SMILLER	01/20/2005	MATERIAL NO.		SD-74139-001		
DRAFT WHERE APPLICABLE MUST REMAIN WITHIN DIMENSIONS				SEE TABLE		SHEET NO.		1 OF 2		
THIS DRAWING CONTAINS INFORMATION THAT IS PROPRIETARY TO MOLEX INCORPORATED AND SHOULD NOT BE USED WITHOUT WRITTEN PERMISSION										

ITEM NUMBER	CIRCUIT SIZE	RECOMMENDED CIRCUIT BOARD THICKNESS	A	B	C	D	E
74139-5100	100	.062±.006 (1.57±0.15)	2.450 (62.23)	2.676 (67.97)	2.949 (74.90)	2.842 (72.19)	.118 (3.00)
74139-5080	80	.062±.006 (1.57±0.15)	1.950 (49.53)	2.176 (55.27)	2.449 (62.20)	2.342 (59.50)	.118 (3.00)
74139-5069	68	.116±.006 (2.95±0.15)	1.650 (41.91)	1.875 (47.65)	2.149 (54.58)	2.042 (51.88)	.172 (4.37)
74139-5068	68	.062±.006 (1.57±0.15)	1.650 (41.91)	1.875 (47.65)	2.149 (54.58)	2.042 (51.88)	.118 (3.00)
74139-5060	60	.062±.006 (1.57±0.15)	1.450 (36.83)	1.676 (42.57)	1.949 (49.50)	1.842 (46.80)	.118 (3.00)
74139-5050	50	.062±.006 (1.57±0.15)	1.200 (30.48)	1.426 (36.22)	1.699 (43.15)	1.592 (40.45)	.118 (3.00)
74139-5040	40	.062±.006 (1.57±0.15)	.950 (24.13)	1.176 (29.87)	1.449 (36.80)	1.342 (34.10)	.118 (3.00)
74139-5031	30	.116±.006 (2.95±0.15)	.700 (17.78)	.925 (23.52)	1.199 (30.45)	1.092 (27.75)	.172 (4.37)
74139-5030	30	.062±.006 (1.57±0.15)	.700 (17.78)	.925 (23.52)	1.199 (30.45)	1.092 (27.75)	.118 (3.00)



CORRECT GEOMETRY FCC NO: UICP2007-2252 DRAWN: BBARKER 2007/05/06 CHKD: MBARRA 2007/05/17 APPR: SMILLER 2007/05/21 REV:	QUALITY SYMBOLS 	GENERAL TOLERANCES (UNLESS SPECIFIED)		DIMENSION STYLE IN/MM		SCALE 4:1	DESIGN UNITS INCH	THIRD ANGLE PROJECTION	
		4 PLACES ± .005 ± .005	3 PLACES ± .005 ± .005	2 PLACES ± 0.13 ± .01	1 PLACE ± 0.25 ± .01	ANGULAR ± 1/2°	DRAWN BY BSMART	DATE 01/20/2005	TITLE SALES ASSY EBBI 50D VERT SMT PLUG-NO LATCHES, NO VAC CAP
		CHECKED BY BBARKER		DATE 01/20/2005		APPROVED BY SMILLER		DATE 01/20/2005	
		MATERIAL NO. SEE TABLE		DOCUMENT NO. SD-74139-001		SHEET NO. 2 OF 2			