

**PLEASE CHECK WWW.MOLEX.COM FOR LATEST PART INFORMATION**

**Part Number:** [0010101044](#)  
**Status:** **Active**  
**Overview:** [kk](#)  
**Description:** 5.08mm (.200") Pitch KK® PC Board Connector, Right Angle Mount Style A, 0.5µm (20µ") Gold (Au), 4 Circuits

**Documents:**

[3D Model](#) [Product Specification PS-99020-0087 \(PDF\)](#)  
[Drawing \(PDF\)](#) [RoHS Certificate of Compliance \(PDF\)](#)

**Agency Certification**

CSA LR19980  
 UL E29179

**General**

Product Family PCB Receptacles  
 Series [3002](#)  
 Application Board-to-Board  
 Overview [kk](#)  
 Product Name KK®

**Physical**

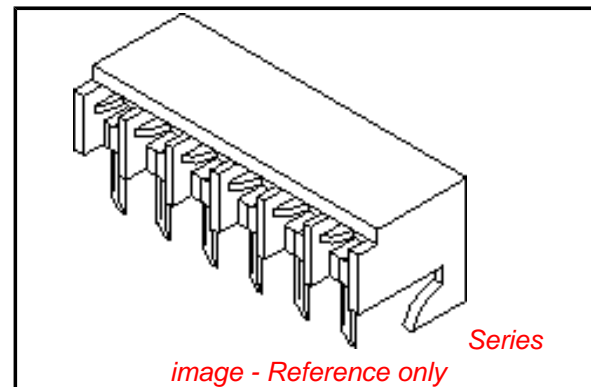
Circuits (Loaded) 4  
 Color - Resin Natural  
 Durability (mating cycles max) 25  
 Flammability 94V-2  
 Glow-Wire Compliant No  
 Material - Metal Phosphor Bronze  
 Material - Plating Mating Gold  
 Material - Plating Termination Gold  
 Material - Resin Nylon  
 Number of Rows 1  
 Orientation Right Angle  
 PC Tail Length (in) 0.169 In  
 PC Tail Length (mm) 4.30 mm  
 PCB Locator No  
 PCB Retention Yes  
 PCB Thickness Recommended (in) 0.062 In  
 PCB Thickness Recommended (mm) 1.60 mm  
 Packaging Type Tray  
 Pitch - Mating Interface (in) 0.200 In  
 Pitch - Mating Interface (mm) 5.08 mm  
 Plating min: Mating (µin) 15  
 Plating min: Mating (µm) 0.375  
 Plating min: Termination (µin) 2  
 Plating min: Termination (µm) 0.05  
 Polarized to PCB Yes  
 Temperature Range - Operating 0°C to +75°C  
 Termination Interface: Style Through Hole

**Electrical**

Current - Maximum per Contact 7A  
 Voltage - Maximum 250V

**Material Info**

Old Part Number 300204AG



**EU RoHS**

**ELV and RoHS Compliant**  
**REACH SVHC**  
 Not Reviewed  
**Halogen-Free Status**  
**Not Reviewed**

**China RoHS**



**Need more information on product environmental compliance?**

Email [productcompliance@molex.com](mailto:productcompliance@molex.com)  
 For a multiple part number RoHS Certificate of Compliance, [click here](#)

Please visit the [Contact Us](#) section for any non-product compliance questions.

**Search Parts in this Series**

[3002Series](#)

**Mates With**

[3003](#) , [2599](#) , [3008](#)

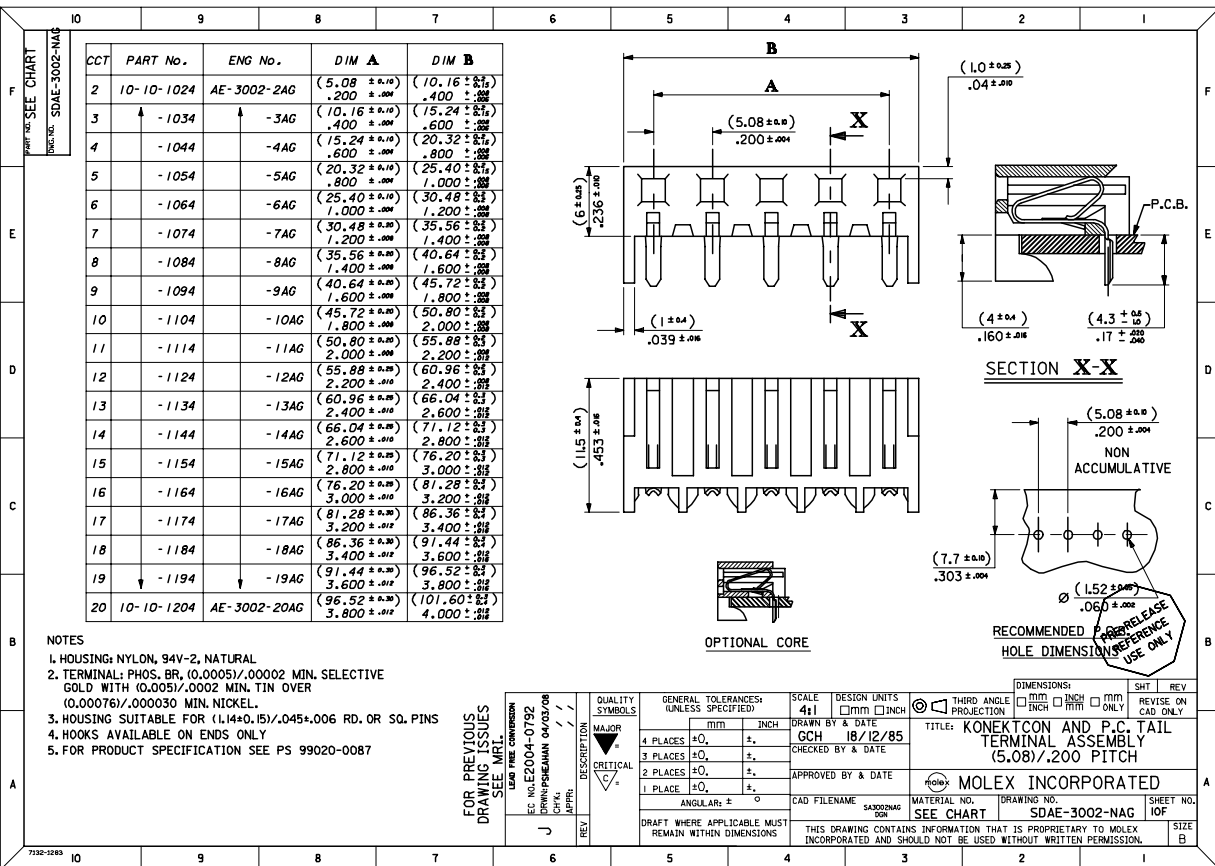
**Reference - Drawing Numbers**

Product Specification  
Sales Drawing

PS-99020-0087  
SDAE-3002-NAG

This document was generated on 05/21/2010

**PLEASE CHECK [WWW.MOLEX.COM](http://WWW.MOLEX.COM) FOR LATEST PART INFORMATION**



CCT	PART No.	ENG No.	DIM A	DIM B
2	10-10-1024	AE-3002-2AG	(5.08 ± 0.10) .200 ± .004	(101.60 ± 0.15) .400 ± .004
3	-1034	-3AG	(10.16 ± 0.10) .400 ± .004	(15.24 ± 0.10) .600 ± .004
4	-1044	-4AG	(15.24 ± 0.10) .600 ± .004	(20.32 ± 0.10) .800 ± .004
5	-1054	-5AG	(20.32 ± 0.10) .800 ± .004	(25.40 ± 0.10) 1.000 ± .004
6	-1064	-6AG	(25.40 ± 0.10) 1.000 ± .004	(30.48 ± 0.10) 1.200 ± .004
7	-1074	-7AG	(30.48 ± 0.10) 1.200 ± .004	(35.56 ± 0.10) 1.400 ± .004
8	-1084	-8AG	(35.56 ± 0.10) 1.400 ± .004	(40.64 ± 0.10) 1.600 ± .004
9	-1094	-9AG	(40.64 ± 0.10) 1.600 ± .004	(45.72 ± 0.10) 1.800 ± .004
10	-1104	-10AG	(45.72 ± 0.10) 1.800 ± .004	(50.80 ± 0.10) 2.000 ± .004
11	-1114	-11AG	(50.80 ± 0.10) 2.000 ± .004	(55.88 ± 0.10) 2.200 ± .004
12	-1124	-12AG	(55.88 ± 0.10) 2.200 ± .010	(60.96 ± 0.10) 2.400 ± .004
13	-1134	-13AG	(60.96 ± 0.10) 2.400 ± .010	(66.04 ± 0.10) 2.600 ± .004
14	-1144	-14AG	(66.04 ± 0.10) 2.600 ± .010	(71.12 ± 0.10) 2.800 ± .004
15	-1154	-15AG	(71.12 ± 0.10) 2.800 ± .010	(76.20 ± 0.10) 3.000 ± .004
16	-1164	-16AG	(76.20 ± 0.10) 3.000 ± .010	(81.28 ± 0.10) 3.200 ± .004
17	-1174	-17AG	(81.28 ± 0.10) 3.200 ± .012	(86.36 ± 0.10) 3.400 ± .004
18	-1184	-18AG	(86.36 ± 0.10) 3.400 ± .012	(91.44 ± 0.10) 3.600 ± .004
19	-1194	-19AG	(91.44 ± 0.10) 3.600 ± .012	(96.52 ± 0.10) 3.800 ± .004
20	10-10-1204	AE-3002-20AG	(96.52 ± 0.10) 3.800 ± .012	(101.60 ± 0.10) 4.000 ± .004

NOTES  
 1. HOUSING: NYLON, 94V-2, NATURAL  
 2. TERMINAL: PHOS. BR. (0.0005)/.0002 MIN. SELECTIVE GOLD WITH (0.005)/.0002 MIN. TIN OVER (0.00076)/.00030 MIN. NICKEL.  
 3. HOUSING SUITABLE FOR (L14±0.15)/.045±.006 RD. OR SO. PINS  
 4. HOOKS AVAILABLE ON ENDS ONLY  
 5. FOR PRODUCT SPECIFICATION SEE PS 99020-0087

FOR PREVIOUS DRAWING ISSUES SEE MRL

LEAD FREE CONVERSION  
 EC NO. LE2004-0792  
 DRAWN BY: PSHEWAN 04/03/08  
 DATE: 04/03/08

QUALITY SYMBOLS	GENERAL TOLERANCES (UNLESS SPECIFIED)	SCALE	DESIGN UNITS	DIMENSIONS:	SHT	REV
MAJOR	FRACTIONAL	4:1	INCH	THIRD ANGLE PROJECTION		
CRITICAL	DECIMAL	GCH	18/12/85	INCH FRACTION		
	ANGULAR ± °			MILLIMETER		

TITLE: KONEKTCON AND P.C. TAIL TERMINAL ASSEMBLY (5.08)/.200 PITCH

APPROVED BY & DATE: [Signature] 04/03/08

CAD FILENAME: SA3002NAG.DGN

MATERIAL NO. SA3002NAG

DRAWING NO. SA3002NAG

SHEET NO. 1 OF 1

DRAFT WHERE APPLICABLE MUST REMAIN WITHIN DIMENSIONS

THIS DRAWING CONTAINS INFORMATION THAT IS PROPRIETARY TO MOLEX INCORPORATED AND SHOULD NOT BE USED WITHOUT WRITTEN PERMISSION.

SHT. 1 OF 1						MRI - SDAE-3002-NAG	
MODIFICATION RECORD INDEX							
ERO	ECO	ISS.	DATE	INIT.	SHTS-AFFECTED	DESCRIPTION OF MOD.	
7435	---	---	18.1.70	RE	1	---	
7660	---	A	1.3.78	RE	1	FINAL RELEASE -6AG & -8AG	
363	---	B	24.8.82	GH	1	EDP No.FOR -2AG ADDED	
1139	---	C	18.9.85	GH	1	EDP No.FOR -4AG ADDED	
---	609	D	19.12.85	GH	1	EDPs.FOR -4AG & -6AG MODIFIED DRG. REDRAWN ON CAD.	
---	745	E	1.8.86	GH	1	EDPs.FOR -3,-5,-7 AND -9 THRO' -20 ADDED HOUSING INTO LINE WITH TOOL.	
---	958	F	20.10.87	MC	1	PLTG. CHANGED	
ECR/ECN	ISS.	DATE	INIT.	SHTS-AFFECTED	DESCRIPTION OF MOD.		
E10121	G	91.5.29	PMMN	1	DIM 'B' TOL CHANGES		
E2003-0992	H	03.03.27	PS	1	NEW PROD.SPEC.99020-0087 ADDED		
MOLEX EUROPE				REVISE ONLY ON CAD SYSTEM			
THIS DRAWING CONTAINS INFORMATION THAT IS PROPRIETARY TO MOLEX INC. & SHOULD NOT BE USED WITHOUT WRITTEN PERMISSION.				CADDWG FILENAME		ISSUE	
				SA3002NAG.DGN		H	

LEVEL CHART

1	TERMINAL-DETAILS	17	33	49
2		18	34	50
3		19	35	51
4		20	36	52
5		21	37	53
6		22	38	54
7		23	39	55
8		24	40	56
9		25	41	57
10		26	42	58
11	HOUSING-DETAILS	27	43	59
12	CROSS HATCHING	28	44	60
13		29	45	61
14		30	46	62
15		31	47	63
16		32	48	